



ELLINGTON
PROPERTIES
LIVE IN *DESIGN*



BERKELEY
PLACE



DESIGN-LED BOUTIQUE PROPERTY DEVELOPER



INVEST IN A BRILLIANT FUTURE

A vibrant community that reflects a positive view of the world and thrives on a beautiful balance of work and play, Dubai is a progressive city that shines a bright light on sustainability, harmonious living and tolerance across the region.

Its recently-announced 2040 Urban Masterplan aims to shift the focus towards a healthier, more enhanced quality of life that centres on the community's wellbeing, through the development of more green spaces, more sustainable mobility and housing, greener modes of transportation, and most importantly, a comprehensive legislation and governance model to support sustainable development and growth.

DREAM HOMES COME TO LIFE

Ellington Properties is a design-led, boutique property developer that creates homes for vibrant communities and multitudes of residents. Maintaining a focus on the aesthetic, the functionality and the convenience of the space, our aim is to offer a beautiful backdrop for our residents' stories, developing spaces where they can grow, prosper and live life on their own terms.



SETTING NEW STANDARDS ACROSS DUBAI

DOWNTOWN DUBAI



DT1 is a trendsetter for the new market standard, incorporating art and amenities in the heart of Dubai. The project reflects the unique and luxurious expression of residences, wrapped in an understated yet elegant façade, and offering a truly distinct setting inside out. It includes 131 units including penthouses, ranging from 534 sq. ft to 5,642 sq. ft. With amenities including a lap and leisure pool, club lounge, gym, children's play area, landscaped areas and a retail strip, DT1 offers the most impressive lifestyle opportunities.

MOHAMMED BIN RASHID CITY

W I L T O N — TERRACES —

Wilton Terraces delivers a unique living experience where life finds the perfect balance, creating an atmosphere for young families to connect, share and grow. Influenced by the rich textures and patterns prominent from the Silk Road period, Wilton Terraces is a brilliant reimagination that blends classical elements with contemporary design, creating the perfect setting for modern living. Its two 12-storey towers comprise of 283 bespoke 1-, and 2-bedroom residences. The project includes a fitness centre and yoga room, a children's pool and a family pool with a full lap, indoor and outdoor children's play areas, and BBQ area.

W WILTON PARK RESIDENCES

The project is designed to allow its residents to experience a balanced indoor and outdoor lifestyle, where living spaces flow uninterrupted into outdoor spaces and parks, seamlessly extending the interiors. Featuring 320 studio, 1-, and 2-bedroom apartments, the development is complete with a lobby designed for lounging and working. The community is also outfitted with a well-equipped fitness centre, indoor and outdoor yoga retreats, garden areas for sitting and lounging, indoor and outdoor children's play areas, a clubhouse, a London-inspired interior aesthetic with panelling, elegant door and joinery detailing, art lights and herringbone flooring, and an infinity edge swimming pool overlooking the park.

KW KENSINGTON WATERS

Kensington Waters serves as the perfect backdrop to lead a contented, modern, and fulfilling life. The development's design and architecture offer residents a unique space where they can experience life in full, grow, expand and thrive. Heightened ceilings, generous outdoor areas, generous storage spaces and wide windows provide room to energise, refresh and reboot, increasing productivity and encouraging self-initiative and an active lifestyle.

JUMEIRAH VILLAGE CIRCLE

BELGRAVIA

Belgravia is a building enveloped by a new 'Residential Rhythm', using precisely balanced proportions and bespoke details in its design. The project includes 181 units, ranging from 1 - to 3-bedroom apartments. Home to a resort-style swimming pool, gym, elegant lobbies, and kids' indoor and outdoor playing areas, along with an expansive courtyard and elegant landscaping, Belgravia provides well-equipped amenities for all its residents.

BELGRAVIA II

Belgravia II offers its residents a quality of life with a colour scheme that is intentionally neutral, with a calm but strong monochromatic and contemporary palette, accentuated by Armani Grey marble inside and out. The project includes two elegant lobbies decked with signature art pieces made by local artists and commissioned by the Ellington Art Foundation. Alongside the 188 units, ranging from studio, 1-, 2-, and 3-bedroom apartments to townhouses, the project offers amenities designed to enhance residents' living experience, such as a pool, a gym, indoor playing area and a landscaped central court.

BELGRAVIA III

Belgravia III comes with fresh, cool palette with penny-round tiles, white joinery and light wood accents, creating an enjoyable and relaxing retreat. The project is home to our largest courtyard yet, alongside two spacious, double-heighted lobbies. As a uniquely designed community, it offers 260 modern studio, 1-, and 2-bedroom apartments, and townhouses, with a host of excellent amenities such as a swimming pool, a gym, indoor and outdoor children's playing areas, and landscaped greenery.

BELGRAVIA HEIGHTS I

With a Scandinavian design approach, timeless grey palette and beautiful accents of white and warm beige tones, the look and feel invites minimalism, simplicity and functionality, creating a more holistic living experience for our residents. It features 156 bespoke studio, 1-, and 2-bedroom apartments, a resort-style pool, a pool terrace, a roof deck, a BBQ deck, a cosy lobby, outdoor kitchen and picnic tables, a yoga retreat, an outdoor children's play area, and a fully-equipped fitness centre.

BELGRAVIA *Square*

An icon of contemporary architecture designed for optimum community living, Belgravia Square encompasses 225 beautifully crafted studio, 1-, and 2-bedroom apartments. With amenities such as two double-heighted lobbies, dramatic staircases and bespoke art installations, adult and kids pool areas, a well-equipped fitness centre, changing rooms, a children's play area with a treehouse and a slide, and a clubhouse with a theatre and lounging and dining areas, it's the perfect home to lead a happy life.

EATON PLACE

Designed to cater to the needs of families looking for a practical living option without compromising on the space or the aesthetics, Eaton Place offers a collection of 110 units, including studio, and 1-, 2-, and 3-bedroom residences, in a warm taupe colour palette with white accents and timber porcelain. The project offers on-site opportunities for fitness and recreation, through amenities such as a well-equipped fitness centre, an outdoor pool surrounded by lush greenery and pool loungers, and play areas, among others.

SOMERSET MEWS

Somerset Mews features refined and contemporary townhouses with a striking facade of earth tones, boasting ample private balconies and allowing for plenty of natural light. The clean lines, expansive windows and open-concept layout of the townhouses reimagine the residents' lifestyles, accented by floor-to-ceiling picturesque windows and innovative designs. Explore 17 spacious, 4-bedroom townhouses, designed in true contemporary fashion.

THE SLOANE

by BELGRAVIA HEIGHTS

Home to a mix of studio, 1-, and 2-bedroom apartments, as well as resort-like amenities, The Sloane by Belgravia Heights is a Miami-inspired residential tower that echoes coastal vibes and a beachside lifestyle. The project encompasses an active and dramatic indoor and outdoor fitness centre, an outdoor cinema, an outdoor BBQ, kitchen and picnic areas, a lounge and lap pool, a dramatic and bright lobby, and a rooftop pet park.

Harrington HOUSE

Inspired by the breathtaking Arabian Desert and its natural wealth, Harrington House embodies a holistic and balanced approach to urban living. Home to 92 stunning residential units, Harrington House's unique design and excellent location add another layer of perfection to an already outstanding residential project. Every element in Harrington House's design serves the same purpose: to amplify the development's aim of offering residents an urban and lively space with the tranquillity and harmony of a suburban retreat.



LIVE IN DESIGN

With a portfolio that includes beautiful communities and developments such as Belgravia, Kensington Waters and DT1, Ellington Properties creates living spaces that look, feel and reflect the meaning of home in every detail, supporting residents in their journeys towards growth and fulfilment.

Our “Live in Design” ethos is both our backbone and our driving force, leading us to innovate, reach new limits, push the envelope and develop new concepts and ground-breaking living spaces.

With a carefully curated selection of locations, our homes combine magnificent views of the Dubai skyline, green spaces, recreational facilities, children’s play areas, courtyards, astounding landscaping, inspired architecture, and tailored interiors.

OUR AWARDS

2016 - 2017

ARABIAN PROPERTY AWARDS

- Best Residential High-rise Architecture – DT1
- Best Architecture Single Residence – The Ellington Collection at The Palm Island

2018 - 2019

ARABIAN BUSINESS AWARDS

- Innovative Company of the Year
- Best Luxury Project – DT1

INTERNATIONAL PROPERTY AWARDS

- Best Interior Design Show Home – Belgravia Heights I
- Best Bathroom Design – DT1
- Best Regional Residential Property – Emirates Hills
- Best Global Residential Property – Emirates Hills
- Best Office Interior – Ellington Properties Office

2019 - 2020

CUSTOMER HAPPINESS SUMMIT & AWARDS

- Customer Happiness Award – Real Estate Developer of the Year

BUILD MAGAZINE

- Best Boutique Property Development Company Middle East
- Award for Excellence in Design-led Solutions

2020 - 2021

INTERNATIONAL PROPERTY AWARDS

- Best Residential Development – Wilton Park Residences
- Best Bathroom Design – Wilton Park Residences
- Award-winner in Development Marketing – Live In Design Campaign
- Award-winner for Residential Interior – Apartment – Eaton Place
- Award-winner for Residential Interior – Show Home – Belgravia Square

LUXURY LIFESTYLE AWARD 2021

- Best Luxury Real Estate Developer in Dubai

2021 - 2022

INTERNATIONAL PROPERTY AWARDS

- Best Residential Interior - Show Home - Wilton Park Residences
- Award-winner in Residential Development – DT1
- Award-winner in Bathroom Design – Wilton Terraces
- Award-winner in Kitchen Design – Wilton Park Residences

CUSTOMER HAPPINESS SUMMIT & AWARDS

- Best Customer Happiness Centre

LUX LIFE MAGAZINE

- Most Innovative Design-led Property Developer





PROJECTS HANDED OVER



Delivered in 2020 | Downtown Dubai

ELEVATING THE ART OF LIVING WELL

Located in one of Dubai's most attractive neighbourhoods, Downtown Dubai, DT1 was awarded by Arabian Business for Best Luxury Project, Best Residential High-rise Architecture and Highly Commended Architecture for Multiple Residences.

Ellington Properties created an outstanding, unique project within an exceptional environment, where convenience is matched by outstanding design.



PROJECTS HANDED OVER

BELGRAVIA III



Delivered in 2021 | Jumeirah Village Circle

CRAFTED FOR LIVING

A beautiful, thriving community of 260 modern studio, 1-, and 2-bedroom apartments and townhouses, Belgravia III is a modern escape in the beating heart of a fast-moving city. With a cool colour palette and light wood accents, the development echoes a relaxed atmosphere through a large courtyard, double-heighted lobbies, and a host of facilities and amenities that revolve around the residents' wellness, wellbeing and health.





PROJECTS HANDED OVER



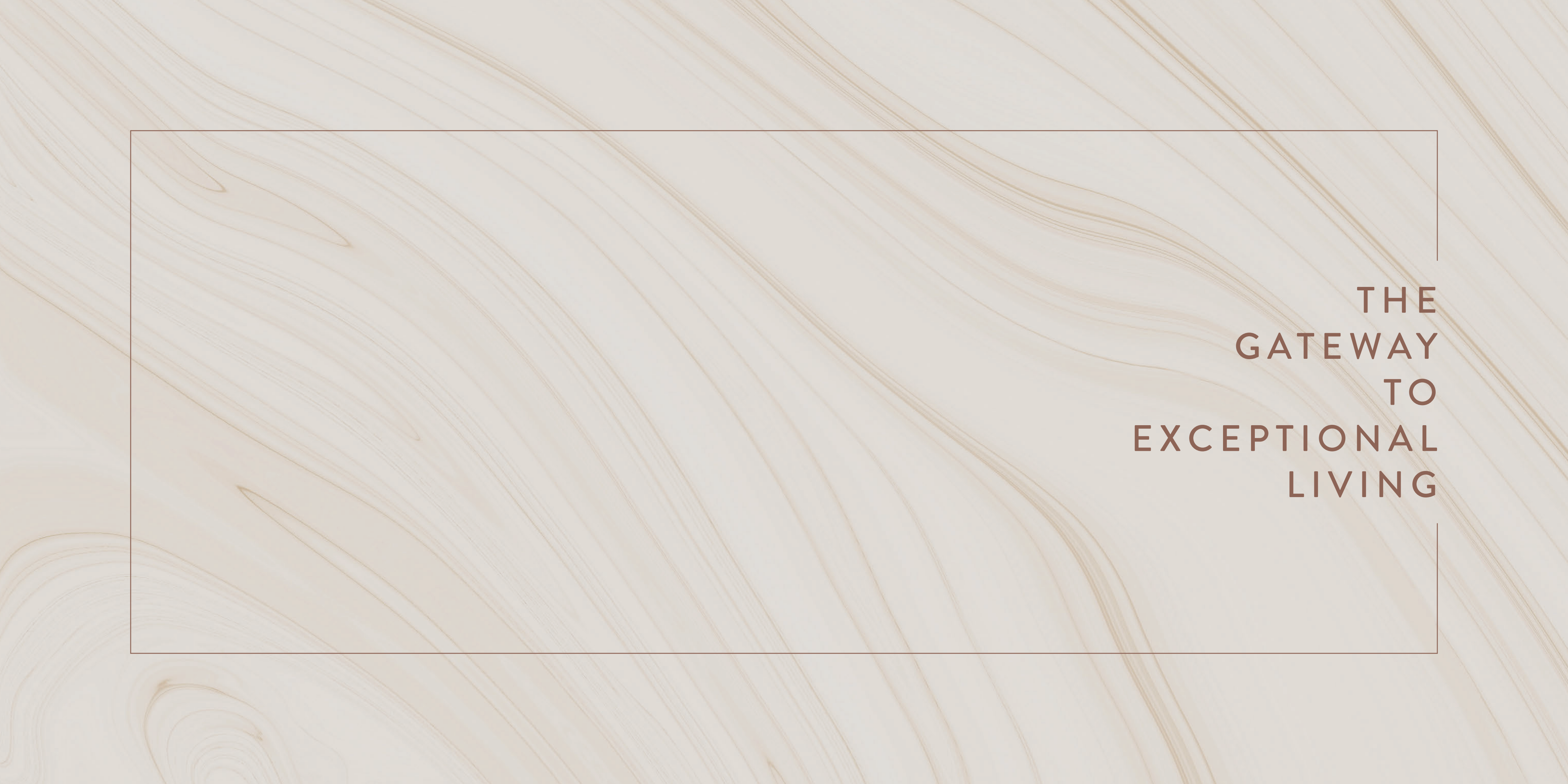
WILTON TERRACES

Delivered in 2021 | Mohammed Bin Rashid City



INDULGE IN THE FUTURE OF LIVING

Standing high in one of Dubai's most iconic communities, Wilton Terraces is a thriving development where young entrepreneurs and new families can lead an affluent and exciting lifestyle. Overlooking some of the city's most spectacular landscapes, the development comprises of 283 residences and is home to a state-of-the-art fitness centre, kids' play area, a relaxing pool with water deck and barbecue area.



THE
GATEWAY
TO
EXCEPTIONAL
LIVING

STEP INTO YOUR NEW LIFE

A duality that inspires endless creativity and adventure, the meeting of the inside and the outside is a delicate combination of two realms, with elements that create the perfect environment for residents to grow, create and thrive.

Lush greenery and beautiful landscapes lead to a doorway between two realities, blurring the lines between the adventure and natural beauty of the outside, and the comforting serenity of the inside.

A glistening haven in the heart of a beautiful desert landscape, it is a mirage that takes residents on a new journey every day, creating a perfect backdrop for real life success stories.





ADVENTURE AT YOUR DOOR

A thriving neighbourhood that inspires life, comfort and convenience in every corner, Mohammed Bin Rashid City is a beautiful waterfront community spread across 8 million sq. ft. of beautiful, lush and rich landscapes. With expanses of green space, world-class amenities, and a fully integrated community with recreational facilities, schools, and parks, this vibrant community is the perfect home.

Located within the lively community, Berkeley Place is in close proximity to some of the city's most iconic landmarks and breathtaking destinations.



DUBAI INTERNATIONAL AIRPORT

WORLD TRADE CENTRE

DUBAI FESTIVAL CITY

DUBAI INTERNATIONAL FINANCIAL CENTRE

DUBAI CREEK HARBOUR

RAS AL KHOR WILDLIFE SANCTUARY

DUBAI OPERA

THE DUBAI MALL

BURJ KHALIFA

DUBAI DESIGN DISTRICT

RAS AL KHOR ROAD

BUSINESS BAY

MOHAMMED BIN RASHID CITY

DUBAI AL AIN ROAD

MEYDAN



4 MINUTES
North London Collegiate School



4 MINUTES
Hartland International School



10 MINUTES
Meydan One Mall



10 MINUTES
Meydan Racecourse



10 MINUTES
Ras Al Khor Wildlife Sanctuary



12 MINUTES
Dubai Opera



12 MINUTES
Downtown Dubai



12 MINUTES
The Dubai Mall & Burj Khalifa



15 MINUTES
Dubai International Financial Centre



17 MINUTES
Dubai International Airport



18 MINUTES
Museum of the Future



20 MINUTES
Emirates Golf Club



20 MINUTES
Palm Jumeirah



30 MINUTES
Al Maktoum International Airport

A LIFE WORTH REMEMBERING

In a fast-moving world that continues to push, excel and evolve, Berkeley Place stands out as a striking development where residents can refuel, rest and create. The seamless blend of outside elements in an indoor environment is as stimulating as it is inspiring, providing the ideal setting for your story. The marriage of timeless and classic elements and contemporary design is put at the service of the community's wellbeing. Sustainability, comfort and wellness are the cornerstone of this iconic development, creating a real-life haven for our residents.



SHAPING YOUR DREAM WORLD

Located in the heart of one of the busiest cities in the world, Berkeley Place's design and architecture frame moments through form. Every detail captures the unique position of Berkeley Place, communicating a sense of harmony and blurring the lines between the inside and the outside. Through generous space, natural light and plenty of greenery, the building's vertical façade is accented by reflected warm light, while the residences enjoy plenty of natural light and ample space, creating a space where anyone can grow and nurture their interests and lifestyles.

The apartments complement the residents' lifestyles, offering a backdrop where modern entrepreneurs, young couples and city dwellers can capture the light and beauty of everyday life, and enjoy every moment in a contemporary environment.





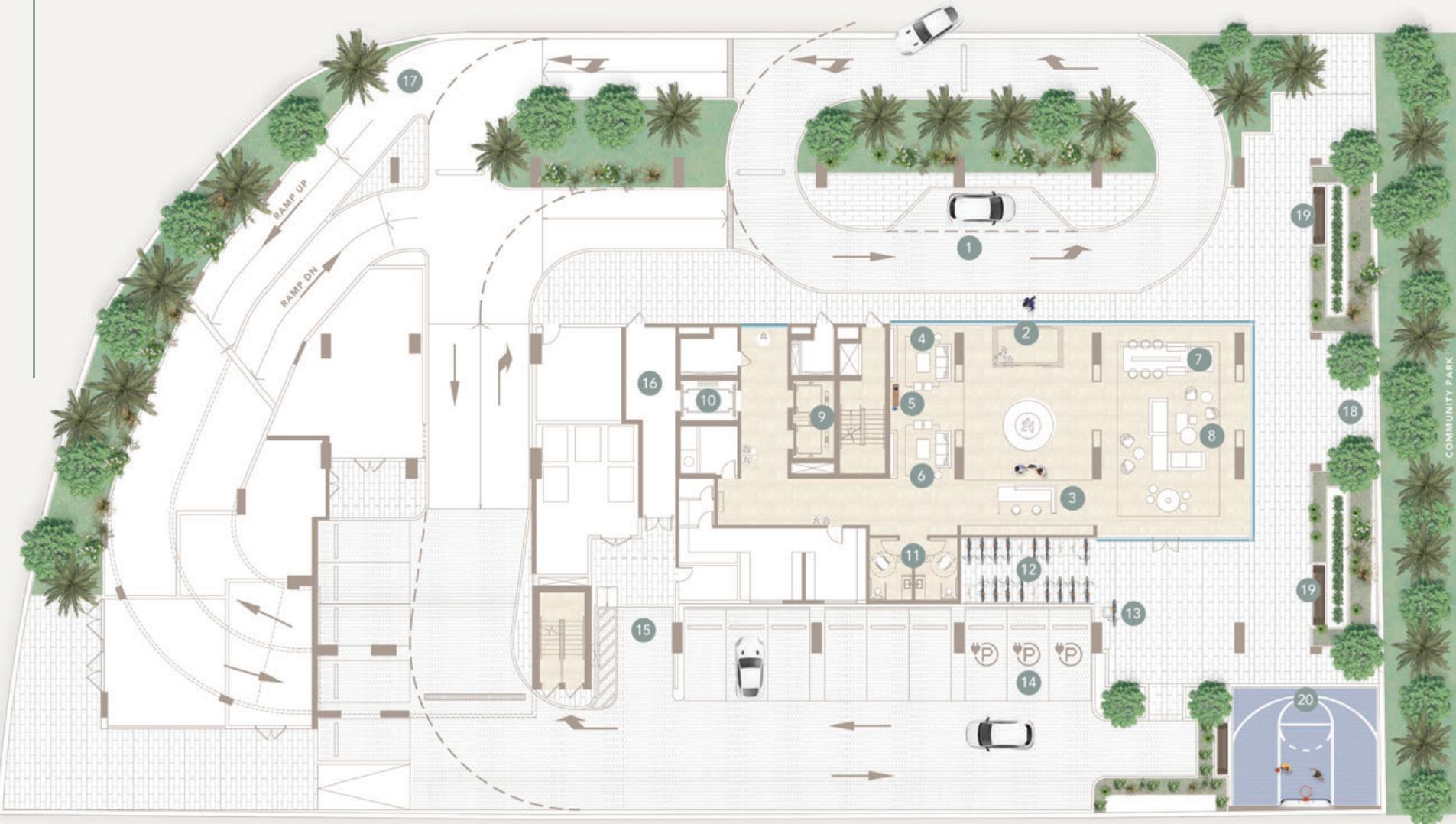
A PERFECT HARMONY

Berkeley Place is a gateway to an exceptional world. The hotel-style lobby is fully connected to the adjacent park, rife with greenery and lush flora. Evolving through the seasons and growing with our residents, the look and feel of the building offer plenty of space, indoor greenery, modern lines and natural lighting.

To accommodate the needs of residents and visitors, the lobby's impressive volumetric atrium, natural daylight and cascading greenery invite residents to an urban sanctuary, complete with social spaces and quieter nooks, refreshment stations, work spaces, and floor-to-ceiling transparent varnish.

AMENITIES PLAN

GROUND FLOOR



- 1 Drop-off Area
- 2 Lobby Entrance
- 3 Lobby Reception
- 4 Family & Kids Seating Area
- 5 Coffee Station
- 6 Reading Area
- 7 Lobby Workstation
- 8 Lobby Lounge Area
- 9 Lifts
- 10 Double-sided Service Lift
- 11 Restrooms
- 12 Bicycle Parking
- 13 Bicycle Maintenance Stand
- 14 EV Charging Stations
- 15 Move-in Truck Parking
- 16 Secured Loading Zone
- 17 Residents Parking Entrance
- 18 Access to Outdoor Leisure Park
- 19 Outdoor Seating Areas
- 20 Outdoor Urban Basketball Area

Scan to view
the interactive
amenities plan



PODIUM LEVEL



- 1 Arcade Room
- 2 Outdoor Lounge Area
- 3 Table Tennis Area
- 4 Indoor Fitness Studio
- 5 Outdoor Fitness Area
- 6 Outdoor Yoga Deck
- 7 Male & Female Changing Rooms
- 8 Steam Shower & Sauna Rooms
- 9 Bathroom for People of Determination
- 10 Outdoor Garden with Seating Areas
- 11 Lift Lobby

Scan to view
the interactive
amenities plan



ROOFTOP



- 1 Pool Spa
- 2 Infinity Lap Pool
- 3 Leisure Lounge Pool
- 4 Baja Shelf
- 5 Pool Sun Loungers Area
- 6 Cabanas
- 7 Changing Rooms
- 8 Outdoor Shower Area
- 9 Lounge Area & Viewing Deck
- 10 Dining Area
- 11 Kitchen & BBQ Area
- 12 Lift Lobby

Scan to view
the interactive
amenities plan



UNFOLD A
WORLD OF
WELLNESS

CONVENIENCE AT YOUR FINGERTIPS

Whether it's a light jog before work, an afternoon yoga session outside, or a busy day spent conquering the new frontiers at work, Berkeley Place residents will find all their needs met, in a development that reflects the modernism of today's world and the peace and timelessness a home should possess.

The journey starts in the spacious lobby and continues across the residences, where a host of amenities await our residents. The rooftop pool and lounge overlook the mesmerizing Dubai skyline, making them the quintessential evening and weekend escape, and a perfect destination to host barbecues and family celebrations, or just enjoy sunny days and bask in the sparkling water.

The facilities also include a dining and entertainment area, an arcade room, an indoor fitness studio and outdoor fitness area, steam and sauna, lush gardens, ample outdoor seating, an outdoor urban basketball area adjacent to the park, EV charging stations and a bike maintenance stand.





ARCADE ROOM

A space where residents can unwind and relax after a long day, the arcade room is perfect for socialising away from the all-encompassing buzz of today. With a selection of board games, video games, game tables, and pinball machines, a community library and a generous outdoor space, it's about to become your favourite space in Berkeley Place.

FITNESS CENTRE

For fitness lovers, Berkeley Place is home to a fully-outfitted indoor fitness studio with ample natural lighting and an outdoor fitness area. With state-of-the-art fitness equipment, the fitness centre is the perfect location to host all types of workout, including full-body workouts, and train all types of muscles.

The space is ideally designed with a storage area for personal items, motivational featured art wall, free Wi-Fi, and ambient music, and complete with changing rooms that include steam and sauna facilities and a family bathroom.





AN IDYLLIC ESCAPE

A canvas of warm tones and soft hues turns Berkeley Place into a development that paints an idyllic picture and reflects an unmatched exuberance of life.

Every corner and detail is designed to transform the residences into a modern-day sanctuary that offers an ethereal escape from the city's frenetic pace. From the peace of the early dawn to the starry skies of late nights, the residential development echoes a lapse between the inner and outer worlds, creating a serenity, comfort and harmony between worlds and lifestyles.

The duality in the theme is supported by facilities and amenities that answer to the physical and spiritual needs of residents and visitors alike.

A HOME IN EVERY SENSE

From the entry point to the homes' interior, Berkeley Place blends together two worlds, crossing the boundaries between the modern and the natural.

The apartments are designed in an open plan that perfectly suits contemporary city lovers and flexible urban lifestyles.

Home to spacious studio, 1-, and 2-bedroom apartments, the homes have been thoughtfully designed for maximum efficiency and stimulation, with plenty of natural light and views that overlook Dubai's spectacular skyline.





KITCHEN

Fully-equipped and conveniently sectioned, the apartments' kitchen areas are at once highly functional and optimally designed. The space is decked with the highest-quality appliances, durable manufactured quartz countertops with high sustainability points and LED lighting. Optimal comfort and convenience is complemented with Ellington Properties' signature tip-out, stainless-steel, under-sink trays, kitchen faucets with a pull-out spray, full-height pull-out pantry cabinets, and wood-look porcelain tile flooring.

BEDROOM

Berkeley Place bedrooms feature large windows that allow for plenty of natural light and fresh air, USB sockets next to the bed, and sleek, wood-look, porcelain floor tiles. Additionally, wardrobes are complemented with durable, laminate cabinet doors, and ample hanging shelves and drawer space.





BATHROOM

To offer living spaces that feel like an everyday holiday and cater to residents' needs, bathrooms are designed with durable manufactured quartz countertops and thresholds, ample storage space, indirect lighting for nightlight, glamour vanities, water-saving sanitary fixtures, and porcelain floor and wall tiles.





CONTACT US

+971 4 248 3400 | +971 55 162 3236

Email Us

info@tanamiproperties.ae

For More Info...

www.tanamiproperties.com/Projects/Berkeley-Place



ADDRESS

Office 3405, Marina Plaza,
Al Marsa Street, Dubai Marina, UAE