



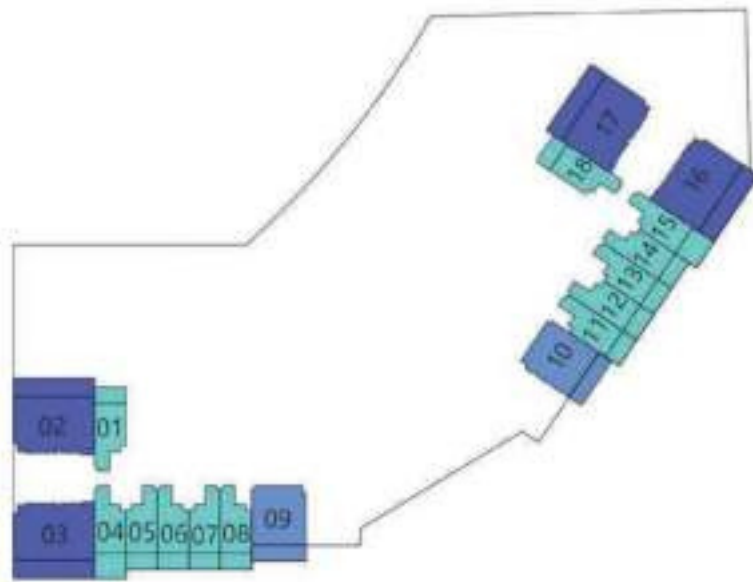
DIAMONDZ

BY **DANUBE**

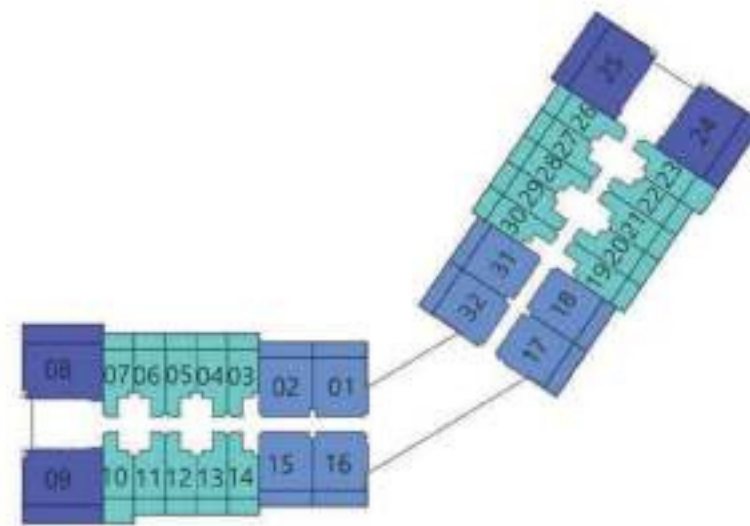
FLOOR PLANS

UPTOWN - JLT
DUBAI

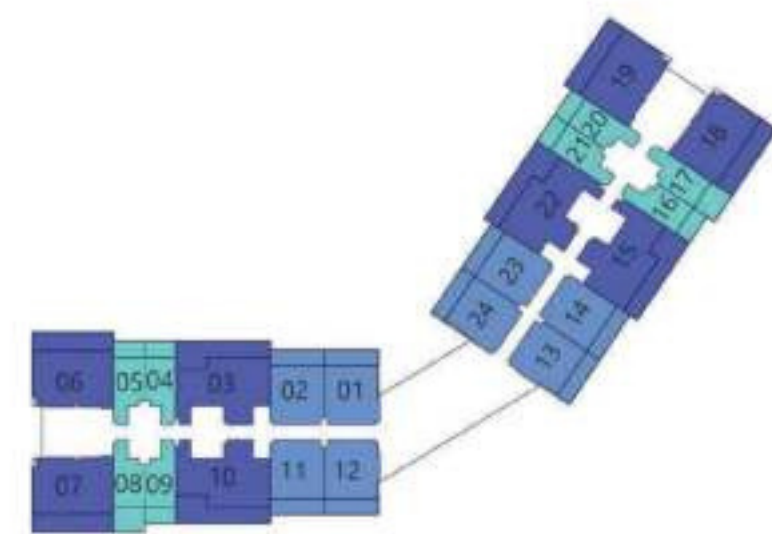
12TH FLOOR



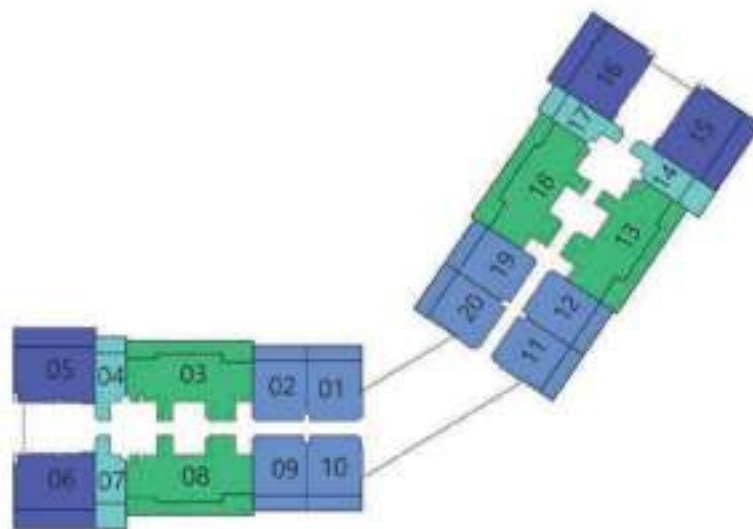
13TH - 31ST FLOOR



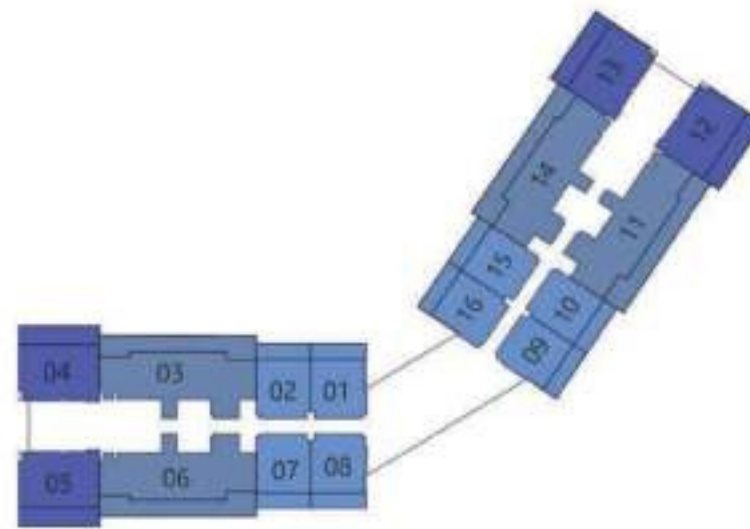
33RD - 42ND FLOOR



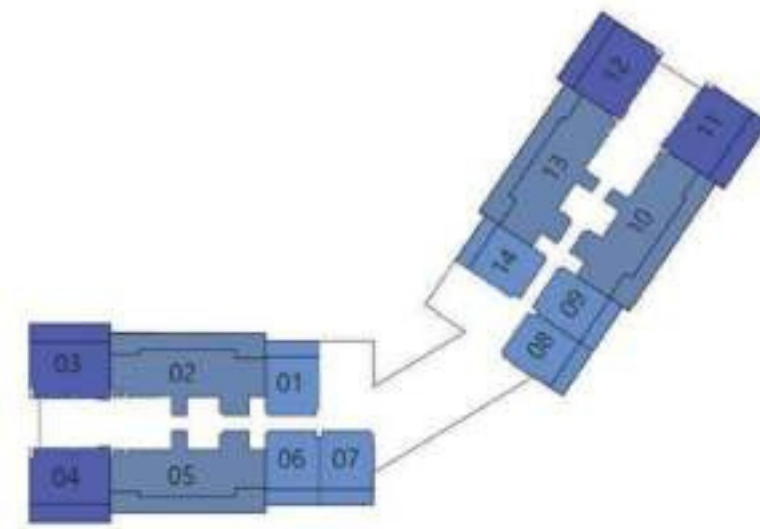
43RD - 55TH FLOOR



56TH - 59TH FLOOR



60TH FLOOR

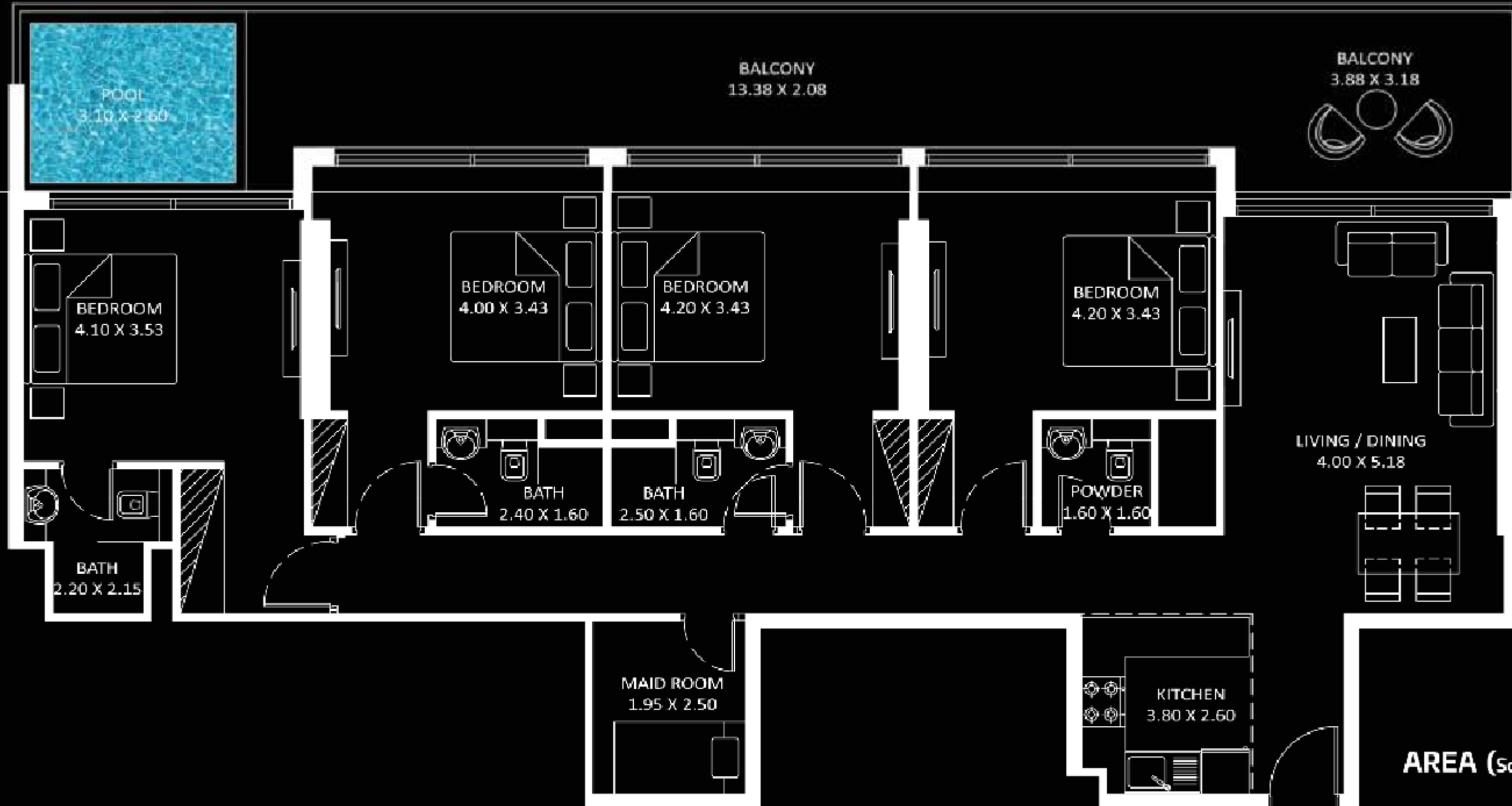


DIAMONDZ

- STUDIO
- 1 BEDROOM
- 2 BEDROOM
- 3 BEDROOM
- 4 BEDROOM



4 BEDROOM



AREA (Sq.Ft)

Apartment
1,425 to 1,433

Balcony
534 to 539

Total
1,959 to 1,973

FEATURES :

- Pool
- Maid Room
- Convertible Kitchen

Diamondz



3 BEDROOM



AREA (Sq.Ft)

Apartment
1,153 to 1,161

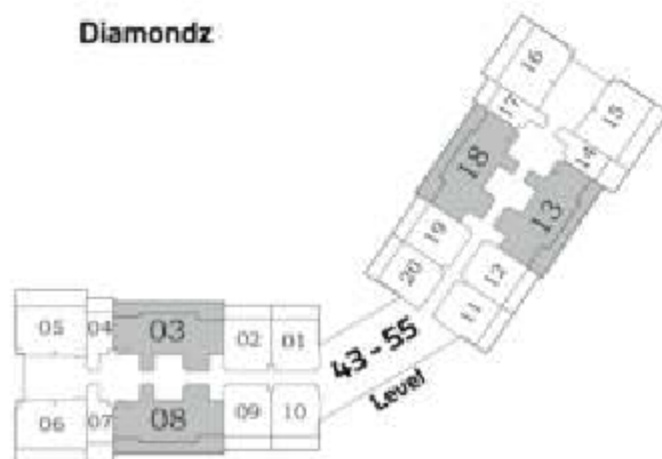
Balcony
354 to 358

Total
1,507 to 1,519

FEATURES :

- Pool
- Maid Room
- Convertible Kitchen

Diamondz



2 BEDROOM TYPE - B



AREA (Sq.Ft)

Apartment
912 to 921

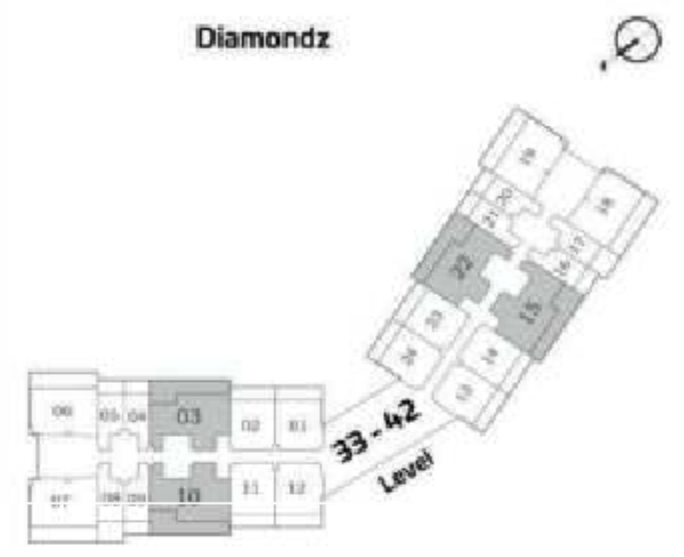
Balcony
345 to 349

Total
1,258 to 1,270

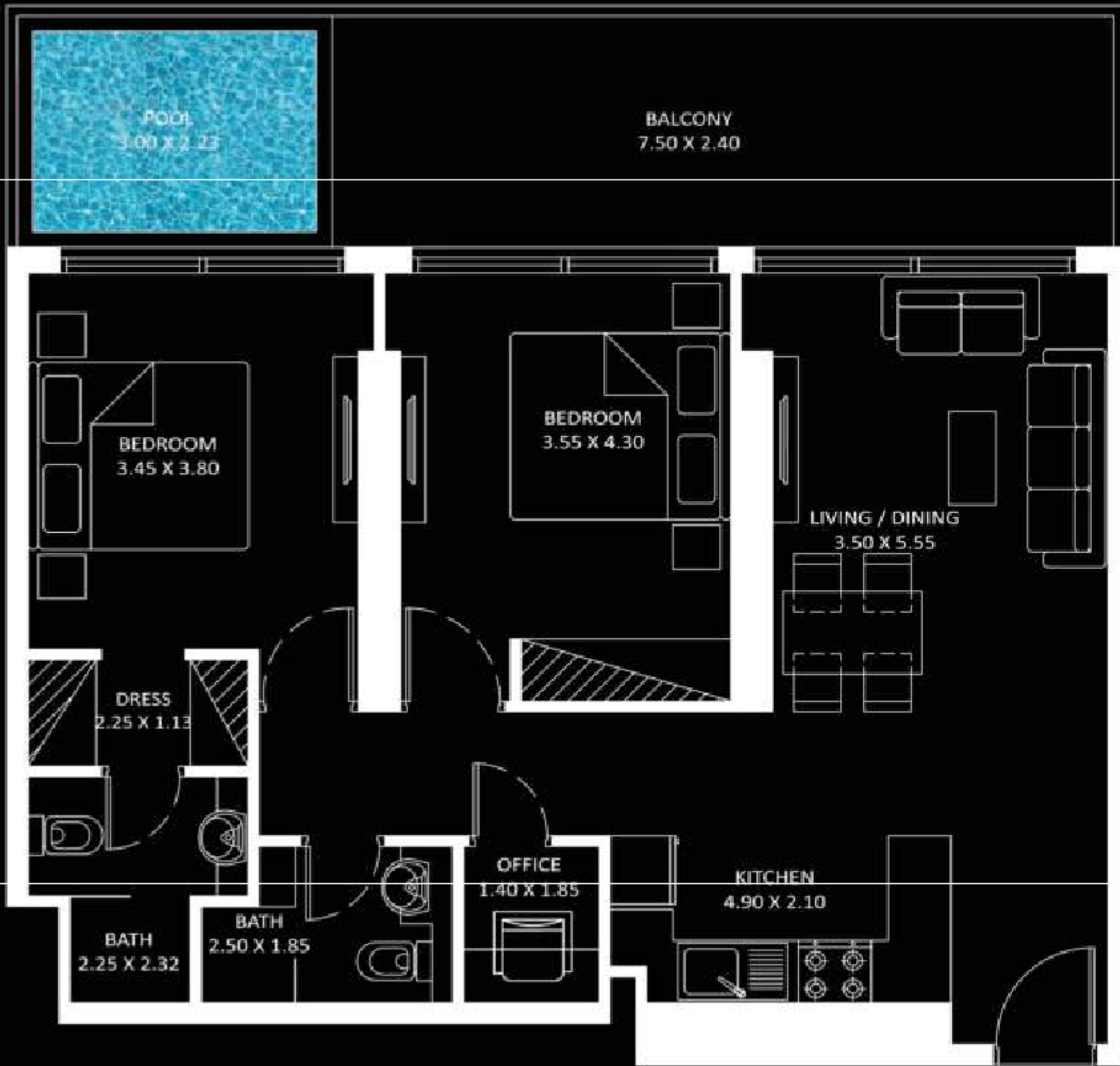
FEATURES :

- Pool
- Convertible Kitchen

Diamondz



2 BEDROOM TYPE - A



AREA (Sq.Ft)

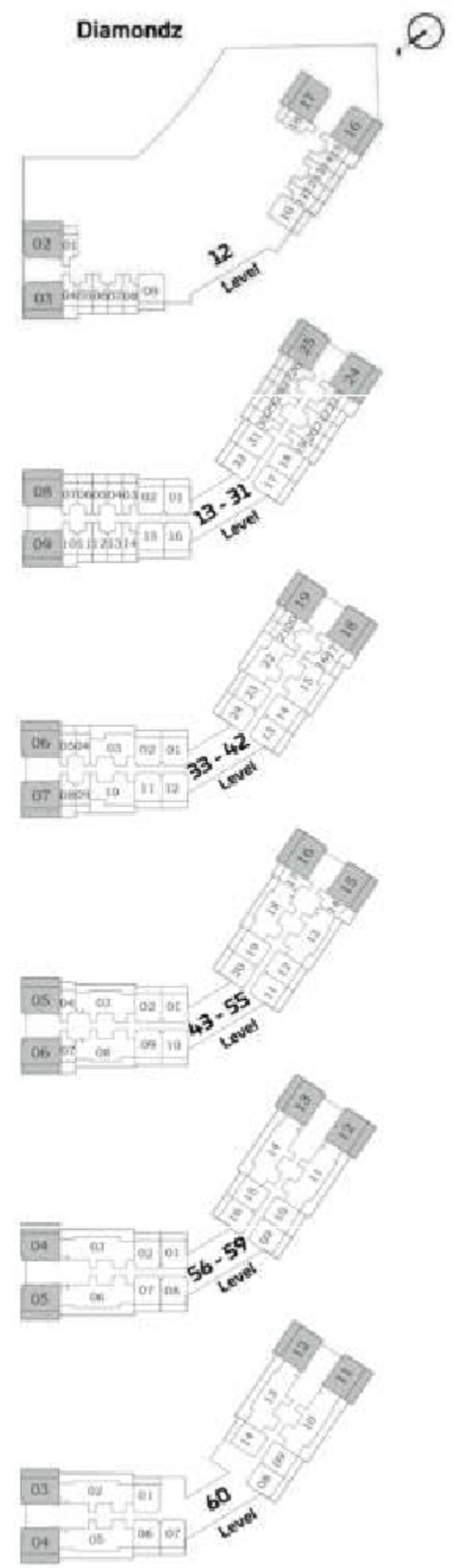
Apartment
822 to 830

Balcony
273 to 277

Total
1,095 to 1,107

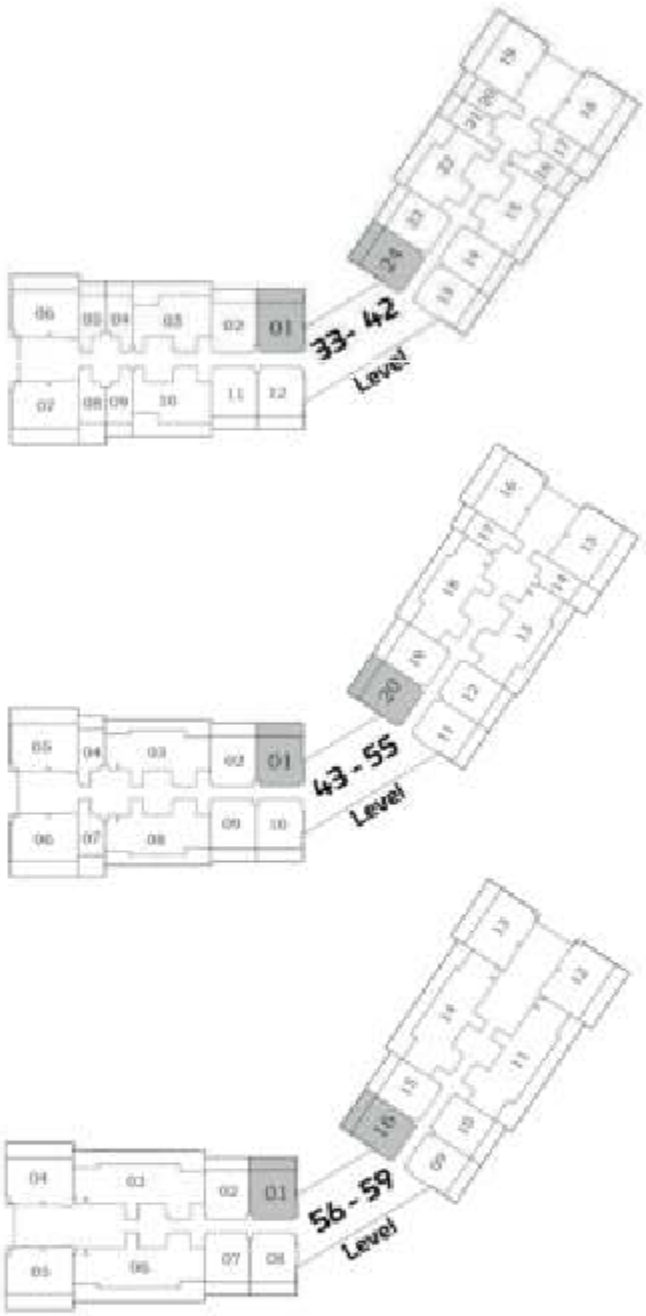
FEATURES :

- Pool
- Office



PRESIDENTIAL SUITE

Diamondz



BALCONY
4.10 X 2.00

POOL
3.00 X 1.90

BEDROOM
3.55 X 4.10

LIVING / DINING
3.55 X 5.35

OFFICE
1.60 X 2.10

DRESS
2.25 X 1.20

KITCHEN
3.55 X 2.50

POWDER
1.60 X 1.65

BATH
1.95 X 2.55

AREA (Sq.Ft)

Apartment
589 to 597

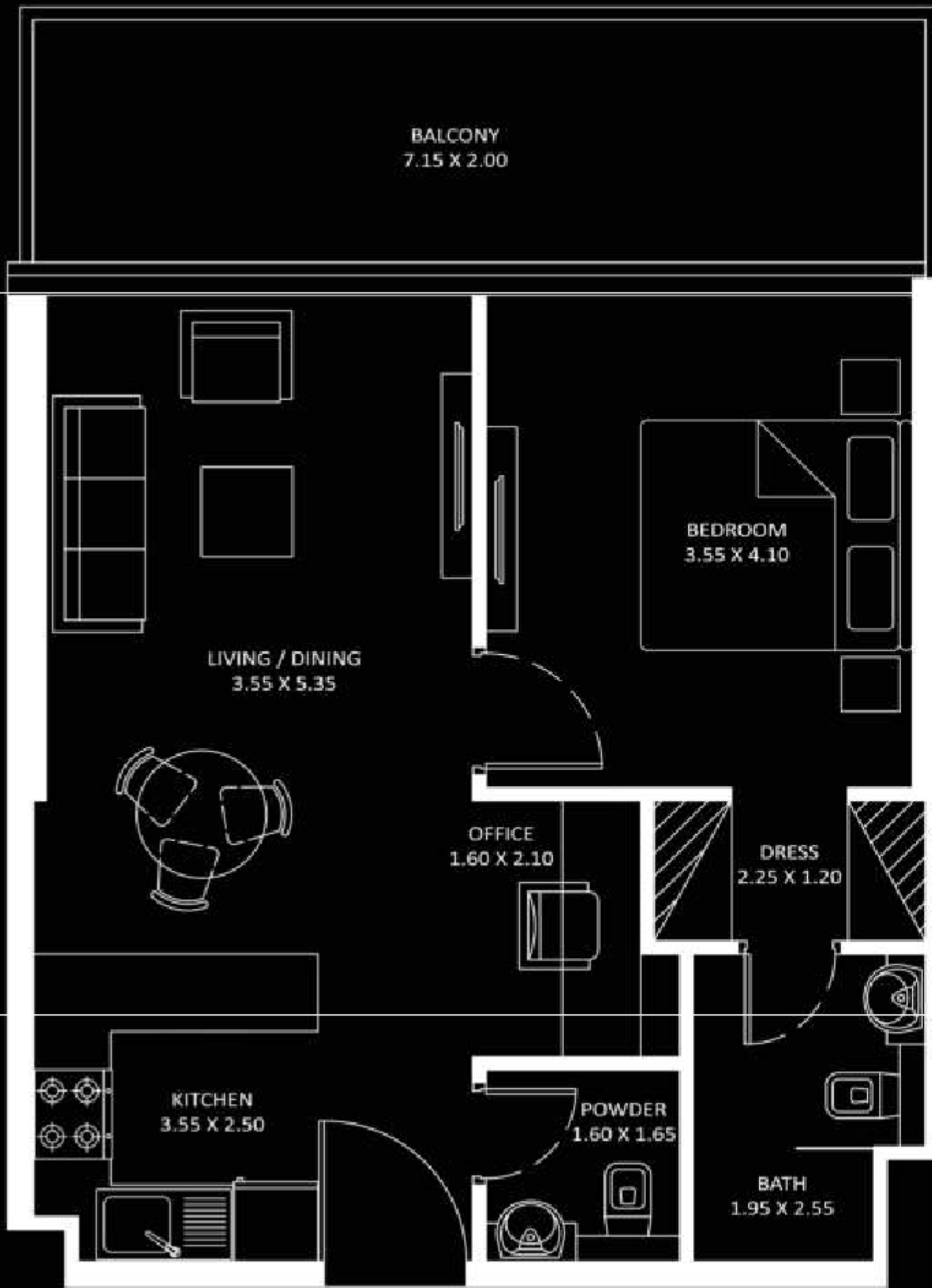
Balcony
150 to 154

Total
739 to 751

FEATURES :

- Pool
- Office

1 BEDROOM



AREA (Sq.Ft)

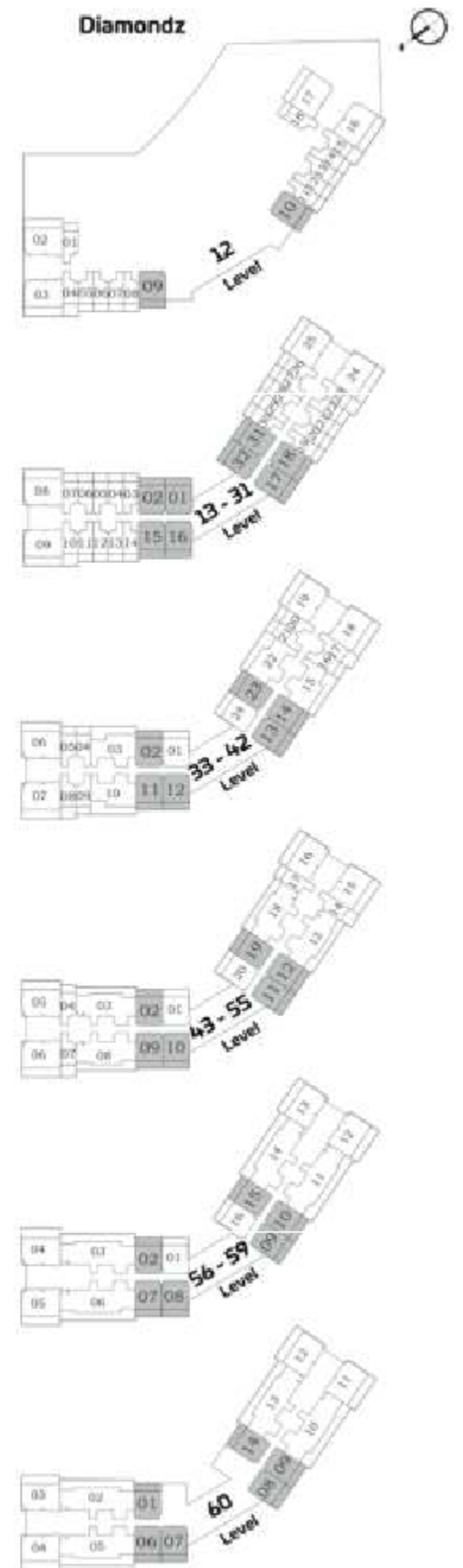
Apartment
585 to 599

Balcony
148 to 154

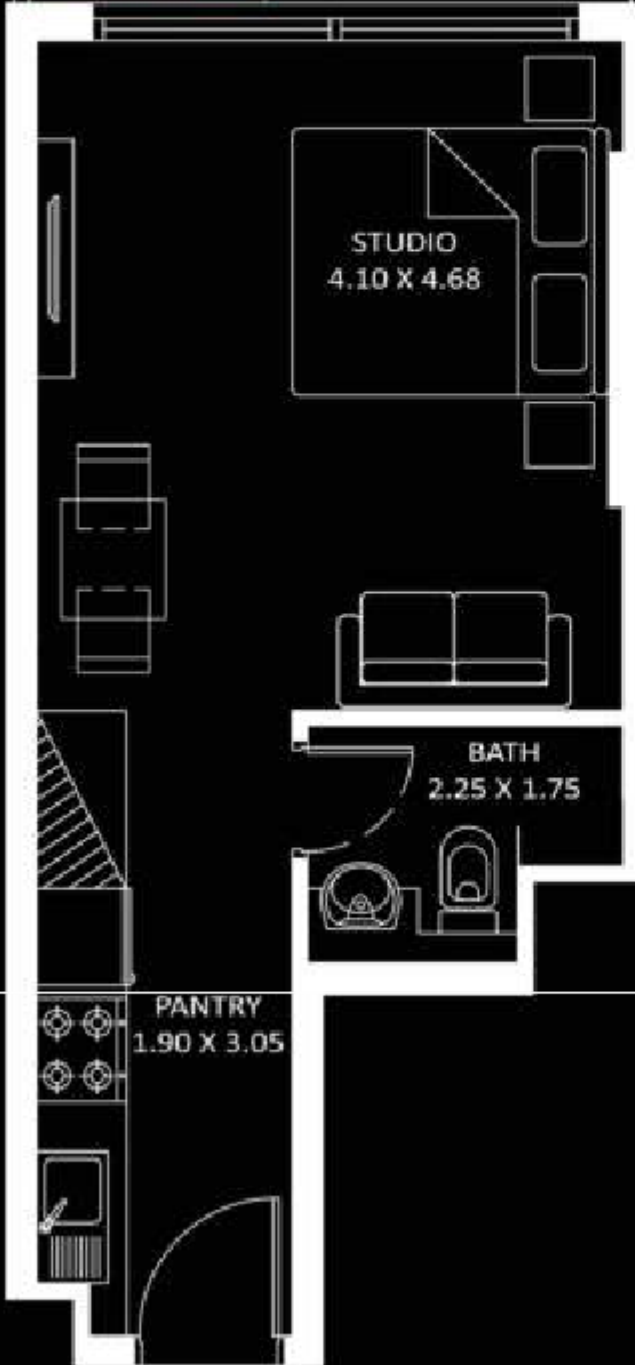
Total
733 to 753

FEATURES :

Office



PRESIDENTIAL STUDIO



AREA (Sq.Ft)

Apartment
318 to 326

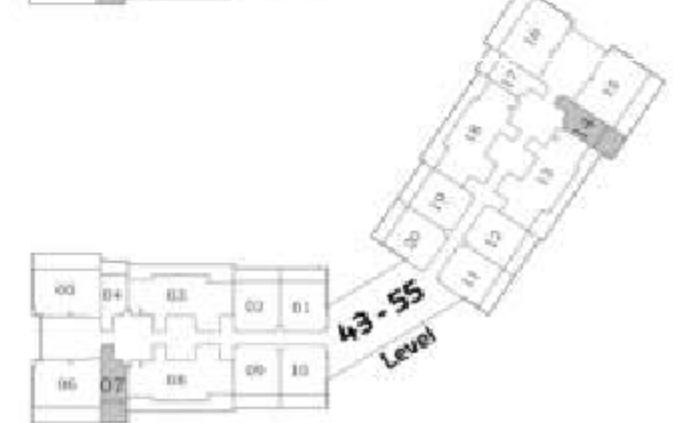
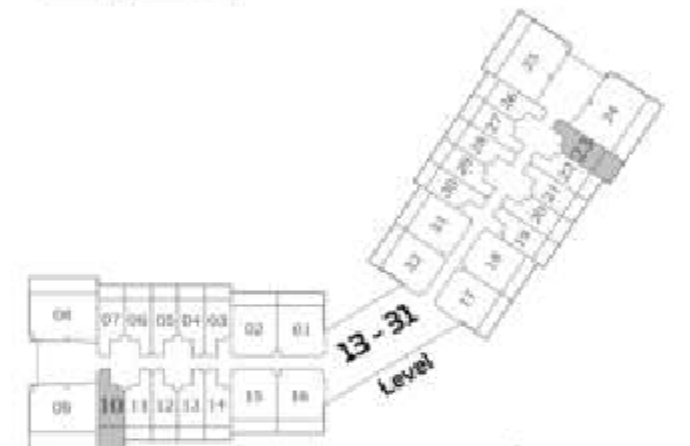
Balcony
142 to 146

Total
460 to 472

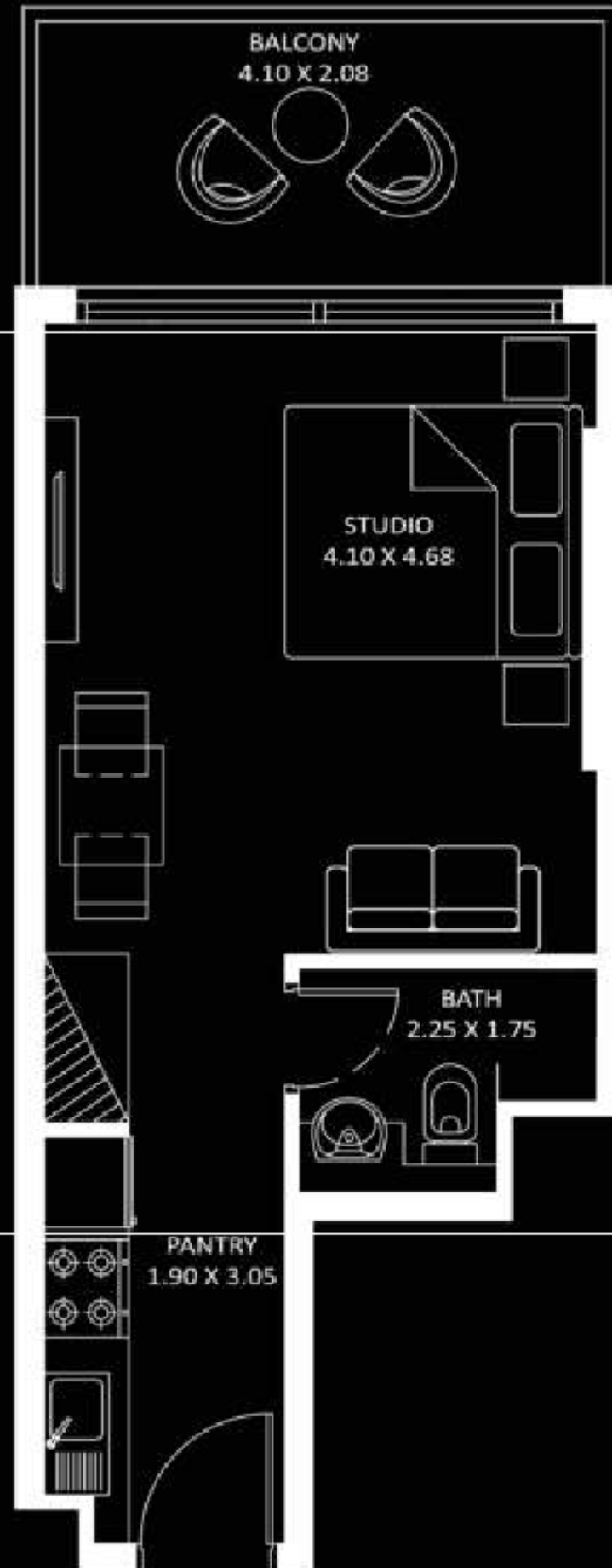
FEATURES :

Pool

Diamondz



STUDIO



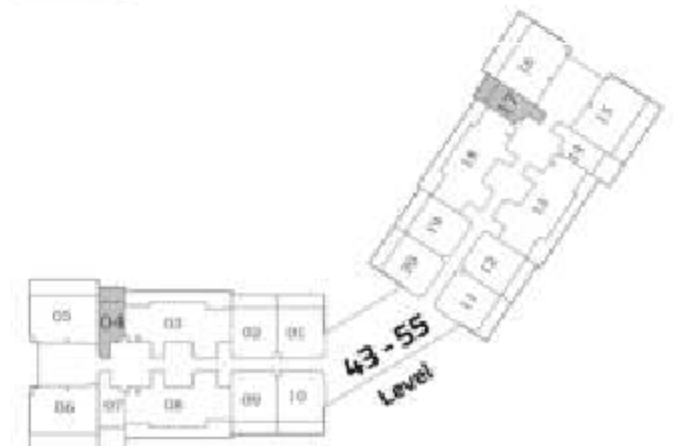
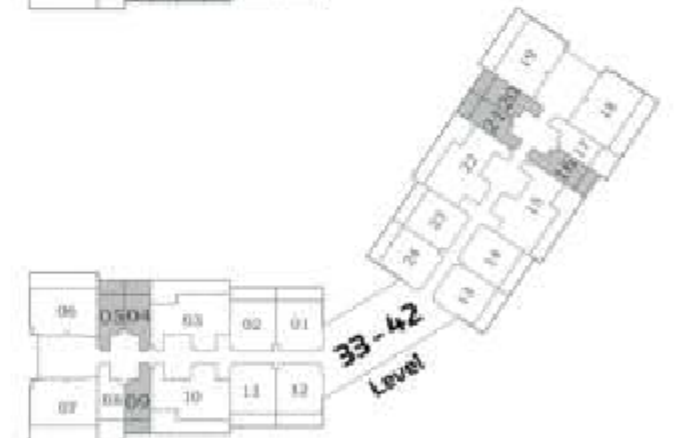
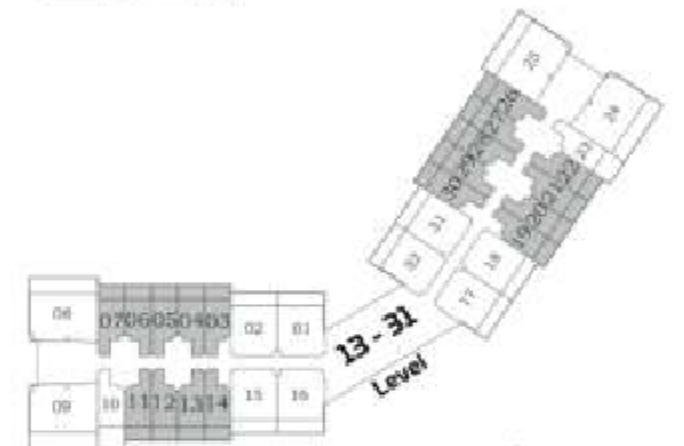
AREA (Sq.Ft)

Apartment
318 to 326

Balcony
89 to 93

Total
407 to 419

Diamondz





1. INFINITY POOL
2. SHALLOW POOL
3. JACUZZI
4. KIDS POOL
5. AQUATIC GYM
6. WATER FALL
7. TODDLERS SPLASH PAD
8. KIDS PLAY AREA
9. TRAMPOLINE
10. CRICKET PITCH
11. WALL CLIMBING
12. PADDLE TENNIS /
BADMINTON COURT
13. BASKET BALL COURT
14. CABANA SEATING
15. BBQ AREA
16. SKATING PARK
17. JOGGING TRACK
18. OUTDOOR GYM
19. OUTDOOR LIBRARY
SEATING
20. SNOOKER ZONE
21. CHESS / TABLE TENNIS
22. FAMILY SEATING
23. DOCTOR'S ON CALL
24. KIDS DAYCARE
25. MALE PRAYER ROOM
26. FEMALE PRAYER ROOM
27. LIBRARY
28. BEAUTY SALON
29. BUSINESS CENTER

AMENITIES AT LEVEL -12





- 30. JACUZZI
- 31. RAIN SHOWER
- 32. OPEN CIGAR LOUNGE
- 33. OUTDOOR PARTY HALL
- 34. INDOOR PARTY HALL
- 35. SPA & THERAPY
- 36. MALE / FEMALE CHANGING ROOM
- 37. GYM
- 38. STUDIO FOR CONTENT CREATOR
- 39. OPEN AIR CINEMA



- 40. ZUMBA DANCING DECK
- 41. SKY OBSERVATORY DECK
- 42. HEALTH BAR



- 43. YOGA DECK
- 44. ROOF TOP HAMMOCK GARDEN
- 45. SKY GOLF
- 46. SKY GARDEN

AMENITIES AT ROOF LEVEL



The JEWEL of JLT

As the architectural gem of Uptown,
situated in Jumeirah Lake Towers,
Dubai, DIAMONDZ is the crafted jewel
of homeowners and investors.





TOTALLY HOME

REAL ESTATE



[totallyhomerealestate](#)



[totallyhomerealestate](#)



[totallyhomerealestate](#)



[totallyhomerealestate.com](#)

+971 54 289 7686

sales@totallyhomerealestate.com

support@totallyhomerealestate.com

admin@totallyhomerealestate.com

Office 103, Building 6 Bay Square Tower, Business Bay PO Box 418317, Dubai