



ART BAY

FL PROJECT BRIEF

**EAST**  
**GROUND FLOOR**  
**AMENITIES PLAN**

- ① ACCESS TO PARKING LEVELS
- ② EV CHARGING STATION
- ③ PARKING FOR PEOPLE OF DETERMINATION
- ④ BICYCLE PARKING
- ⑤ LIFT LOBBY
- ⑥ ACCESS TO PROMENADE



# EAST FIRST FLOOR AMENITIES PLAN

- ① ACCESS TO PARKING LEVELS
- ② ACCESS TO GROUND FLOOR PARKING
- ③ EV CHARGING STATION
- ④ PARKING FOR PEOPLE OF DETERMINATION
- ⑤ BICYCLE PARKING
- ⑥ LIFT LOBBY



**WEST**  
**GROUND FLOOR**  
**AMENITIES PLAN**

- ① ACCESS TO PARKING LEVELS
- ② EV CHARGING STATION
- ③ PARKING FOR PEOPLE OF DETERMINATION  
BICYCLE PARKING
- ④ LIFT LOBBY
- ⑤ ACCESS TO PROMENADE
- ⑥ ACCESS TO PROMENADE



# WEST FIRST FLOOR AMENITIES PLAN

- ① ACCESS TO PARKING LEVELS
- ② ACCESS TO GROUND FLOOR PARKING
- ③ EV CHARGING STATION
- ④ PARKING FOR PEOPLE OF DETERMINATION  
BICYCLE PARKING
- ⑤ LIFT LOBBY
- ⑥ ACCESS TO PROMENADE
- ⑦



HOT YOGA  
STUDIO



CHANG  
E ROOM





ELLINGTON VILLAGE ←  
WORK STATION ↓  
PLAY AREA →

YOUTH HUB





POOL  
L  
DECK



THE  
COURTYARD

# EAST SECOND FLOOR AMENITIES PLAN

- |  |                            |
|--|----------------------------|
| ① LEISURE AND LOUNGE POOL              | ① FEMALE WELLNESS CORNER   |
| ② BAJA SHELF                           | ② MALE WELLNESS CORNER     |
| ③ SUN LOUNGERS AREA                    | ① YOUTH HUB                |
| ④ KIDS POOL                            | ③ LIFT LOBBY               |
| ⑤ BARBEQUE DECK                        | ① LOBBY LOUNGE             |
| ⑥ CULTURE LOUNGE                       | ④ LOBBY RECEPTION          |
| ⑦ PANTRY/DINING                        | ① LOBBY ENTRANCE           |
| ⑧ THE THEATRE                          | ⑤ MAIN ENTRANCE            |
| ⑨ FITNESS STUDIO                       | ① MOVE-IN TRUCK ZONE       |
| ① HOT YOGA STUDIO                      | ⑥ VEHICLE ENTRANCE/EXIT    |
| ① BATHROOM FOR PEOPLE OF DETERMINATION | ① ACCESS TO PARKING LEVELS |
| 1                                      | 7                          |
| 1                                      | 1                          |
|  | 8                          |
|  | 1                          |
|  | 9                          |
|  | 2                          |
|  | 0                          |
|  | 2                          |
|  | 1                          |
|  | 2                          |



# WEST SECOND FLOOR AMENITIES PLAN

- |   |                         |   |                                     |
|---|-------------------------|---|-------------------------------------|
| 1 | LEISURE AND LOUNGE POOL | 2 | LOBBY ENTRANCE                      |
| 2 | BAJA SHELF              | 0 | MAIN ENTRANCE                       |
| 3 | SUN LOUNGERS AREA       | 2 | FITNESS STUDIO                      |
| 4 | CABANAS                 | 1 | HOT YOGA STUDIO                     |
| 5 | OUTDOOR SHOWER          | 2 | OUTDOOR FITNESS AREA                |
| 6 | COURTYARD               | 2 | MALE WELLNESS CORNER                |
| 7 | KIDS POOL               | 2 | FEMALE WELLNESS CORNER              |
| 8 | BARBEQUE DECK           | 3 | PARKING FOR PEOPLE OF DETERMINATION |
| 9 | OUTDOOR KIDS PLAY AREA  | 2 | SERVICE LIFT                        |
| 1 | OUTDOOR TERRACE         | 2 | MOVE-IN TRUCK ZONE                  |
| 0 | ACCESS TO COURTYARD     | 8 | VEHICLE ENTRANCE/EXIT               |
| 1 | LIFT LOBBY              | 2 | ACCESS TO PARKING LEVELS            |
| 1 | CULTURE LOUNGE          | 9 |                                     |
| 1 | THE THEATRE             | 2 |                                     |
| 1 | GAMES CORNER            | 3 |                                     |
| 2 | YOUTH HUB               | 6 |                                     |
| 1 | MULTIPURPOSE TABLE      | 0 |                                     |
| 3 | LOBBY LOUNGE            | 2 |                                     |
| 1 | LOBBY RECEPTION         | 3 |                                     |
| 5 |                         | 7 |                                     |
| 1 |                         | 1 |                                     |



EAST  
ART CLUB  
AMENITIES PLAN

- ① ROOFTOP BAR
- ② WORKSHOP CORNER
- ③ OUTDOOR LOUNGE & VIEWING DECK  
SUNKEN SEATING
- ④ ARTS & PERFORMANCES STAGE
- ⑤ LIFT LOBBY
- ⑥ WASHROOM
- ⑦ WASHROOM



WEST  
ART CLUB  
AMENITIES PLAN

- ① ROOFTOP BAR
- ② WORKSHOP CORNER
- ③ OUTDOOR LOUNGE & VIEWING DECK  
SUNKEN SEATING
- ④ ARTS & PERFORMANCES STAGE
- ⑤ LIFT LOBBY
- ⑥ WASHROOM
- ⑦ WASHROOM





EAST  
FLOOR PLANS







3<sup>RD</sup> - 10<sup>TH</sup>  
FLOOR PLAN

- STUDIO
- 1 BEDROOM
- 2 BEDROOM
- 3 BEDROOM

**STUDIO  
TYPE A**




---

Internal Living Area	:	<b>379.54 Sq. Ft</b>
Outdoor Living Area	:	<b>50.48 Sq. Ft</b>
Total Living Area	:	<b>430.02 Sq. Ft</b>

**2<sup>nd</sup> Floor:**



**3<sup>rd</sup> - 10<sup>th</sup> Floor:**

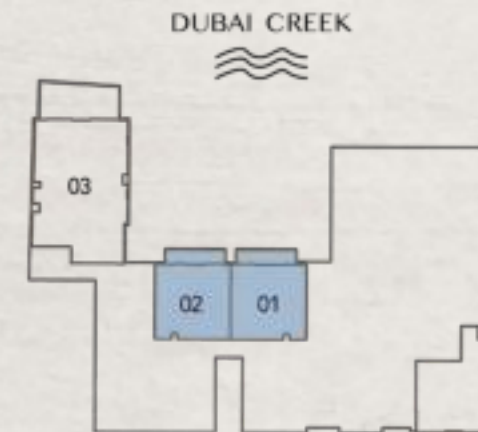


**1 BEDROOM  
TYPE A**



Internal Living Area : 758.64 Sq. Ft  
 Outdoor Living Area : 130.67 Sq. Ft  
 Total Living Area : 889.31 Sq. Ft

**2<sup>nd</sup> Floor:**



**3<sup>rd</sup> - 10<sup>th</sup> Floor:**



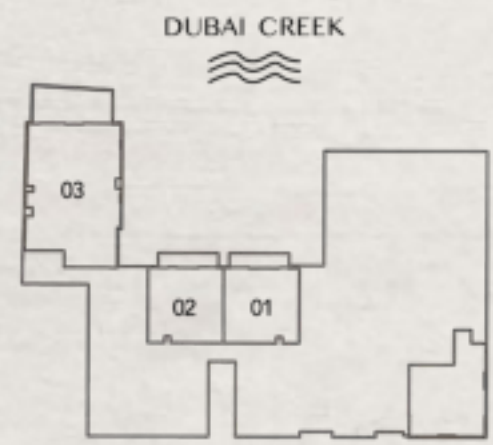
**1 BEDROOM  
TYPE B**




---

Internal Living Area	:	<b>857.24 Sq. Ft</b>
Outdoor Living Area	:	<b>102.58 Sq. Ft</b>
Total Living Area	:	<b>959.82 Sq. Ft</b>

**2<sup>nd</sup> Floor:**



**3<sup>rd</sup> - 10<sup>th</sup> Floor:**



**1 BEDROOM  
TYPE C**

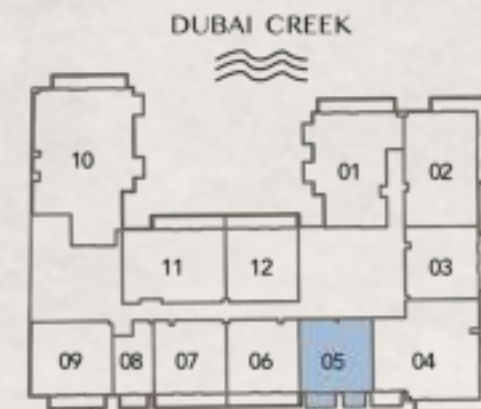


Internal Living Area : 762.73 Sq. Ft  
 Outdoor Living Area : 105.81 Sq. Ft  
 Total Living Area : 868.54 Sq. Ft

**2<sup>nd</sup> Floor:**



**3<sup>rd</sup> - 10<sup>th</sup> Floor:**

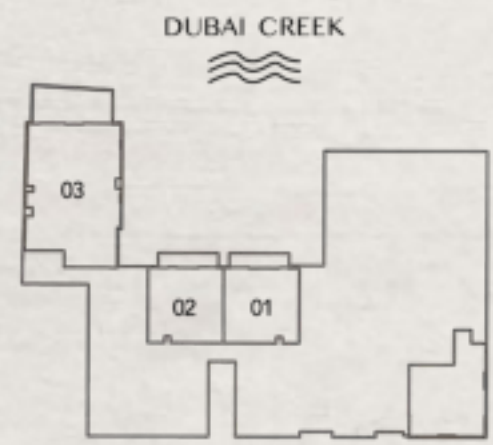


**2 BEDROOM  
TYPE A**



Internal Living Area : 1210.19 Sq. Ft  
 Outdoor Living Area : 240.36 Sq. Ft  
 Total Living Area : 1450.54 Sq. Ft

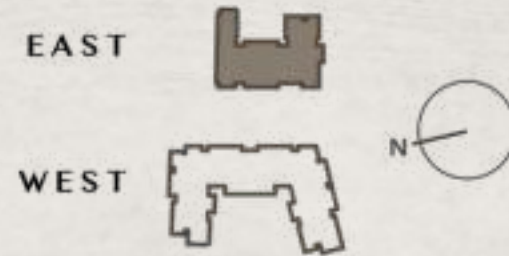
**2<sup>nd</sup> Floor:**



**3<sup>rd</sup> - 10<sup>th</sup> Floor:**

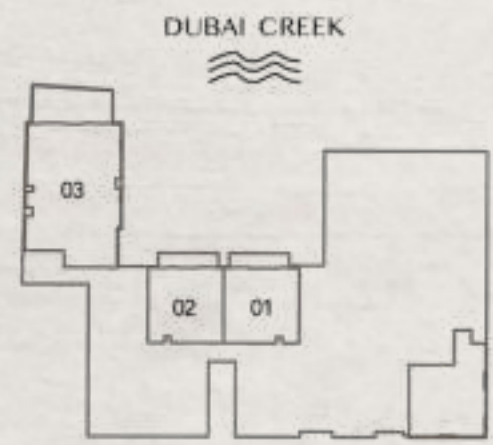


**2 BEDROOM  
TYPE B**



Internal Living Area : 1396.83 Sq. Ft  
 Outdoor Living Area : 295.58 Sq. Ft  
 Total Living Area : 1692.41 Sq. Ft

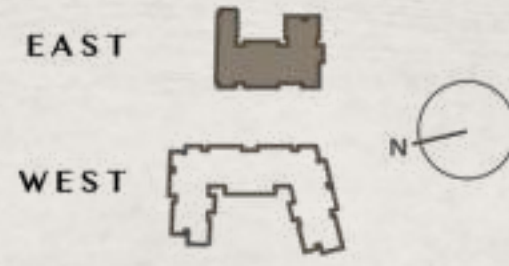
**2<sup>nd</sup> Floor:**



**3<sup>rd</sup> - 10<sup>th</sup> Floor:**

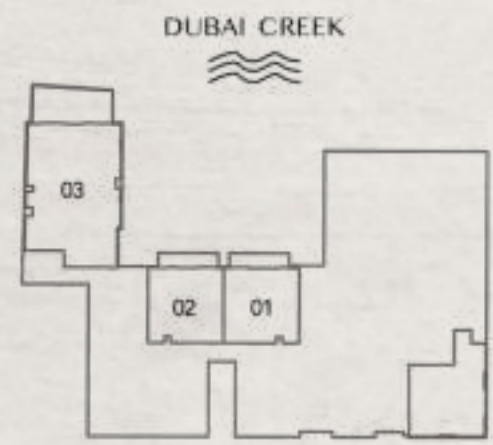


**2 BEDROOM  
TYPE C**



Internal Living Area : 1292.53 Sq. Ft  
 Outdoor Living Area : 141.01 Sq. Ft  
 Total Living Area : 1433.54 Sq. Ft

**2<sup>nd</sup> Floor:**

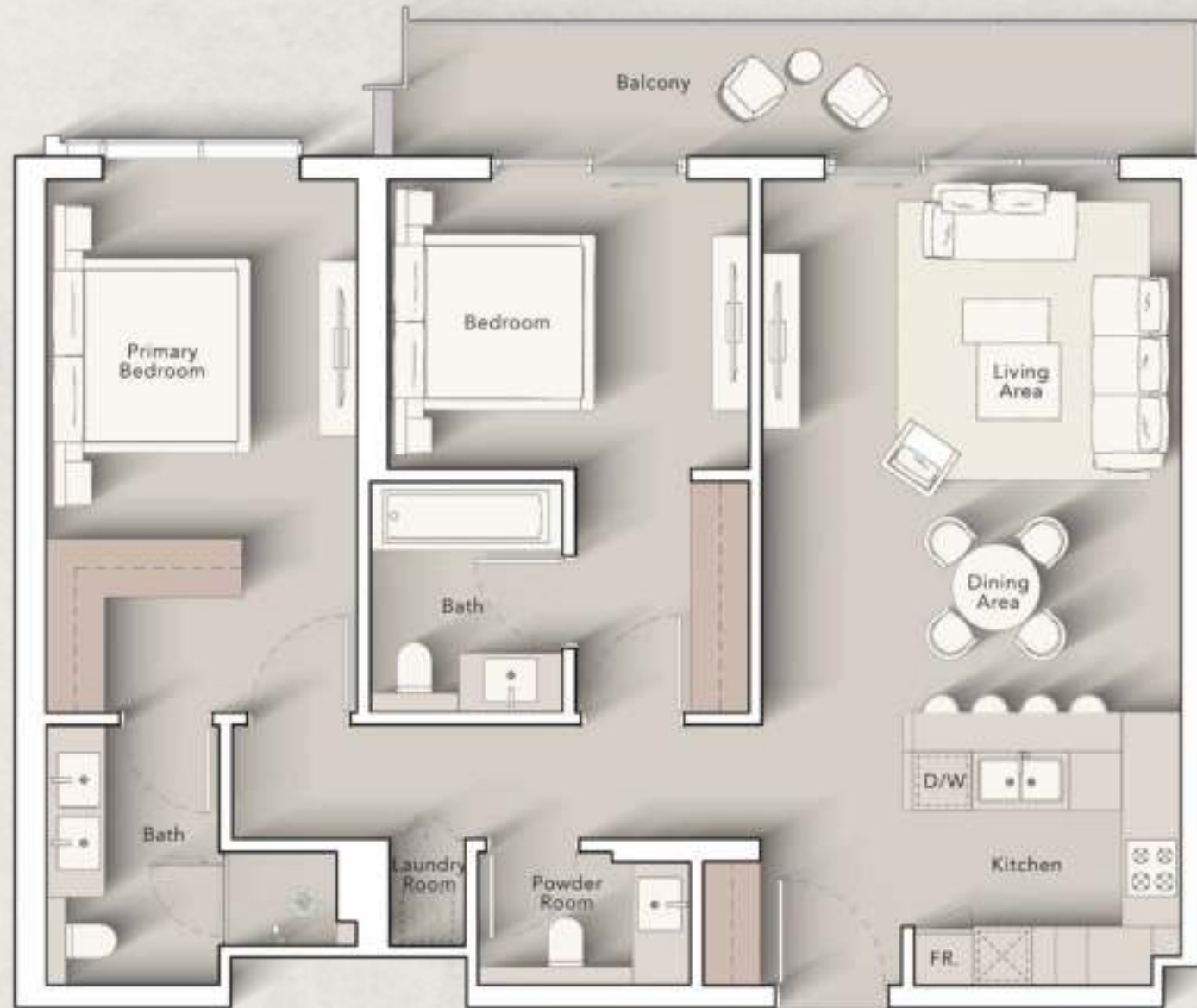


**3<sup>rd</sup> - 10<sup>th</sup> Floor:**





**2 BEDROOM  
TYPE D**

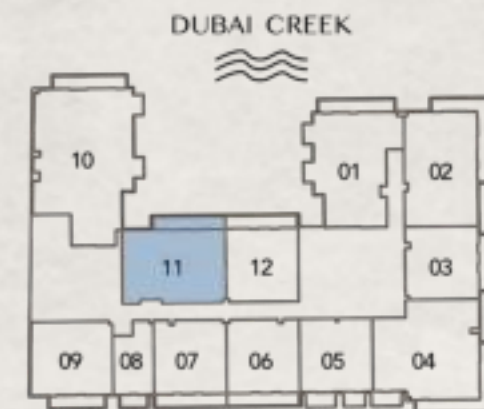


Internal Living Area : 1080.48 Sq. Ft  
 Outdoor Living Area : 130.67 Sq. Ft  
 Total Living Area : 1211.16 Sq. Ft

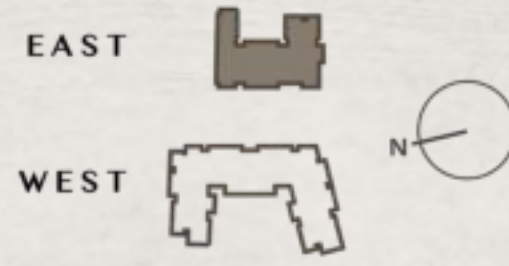
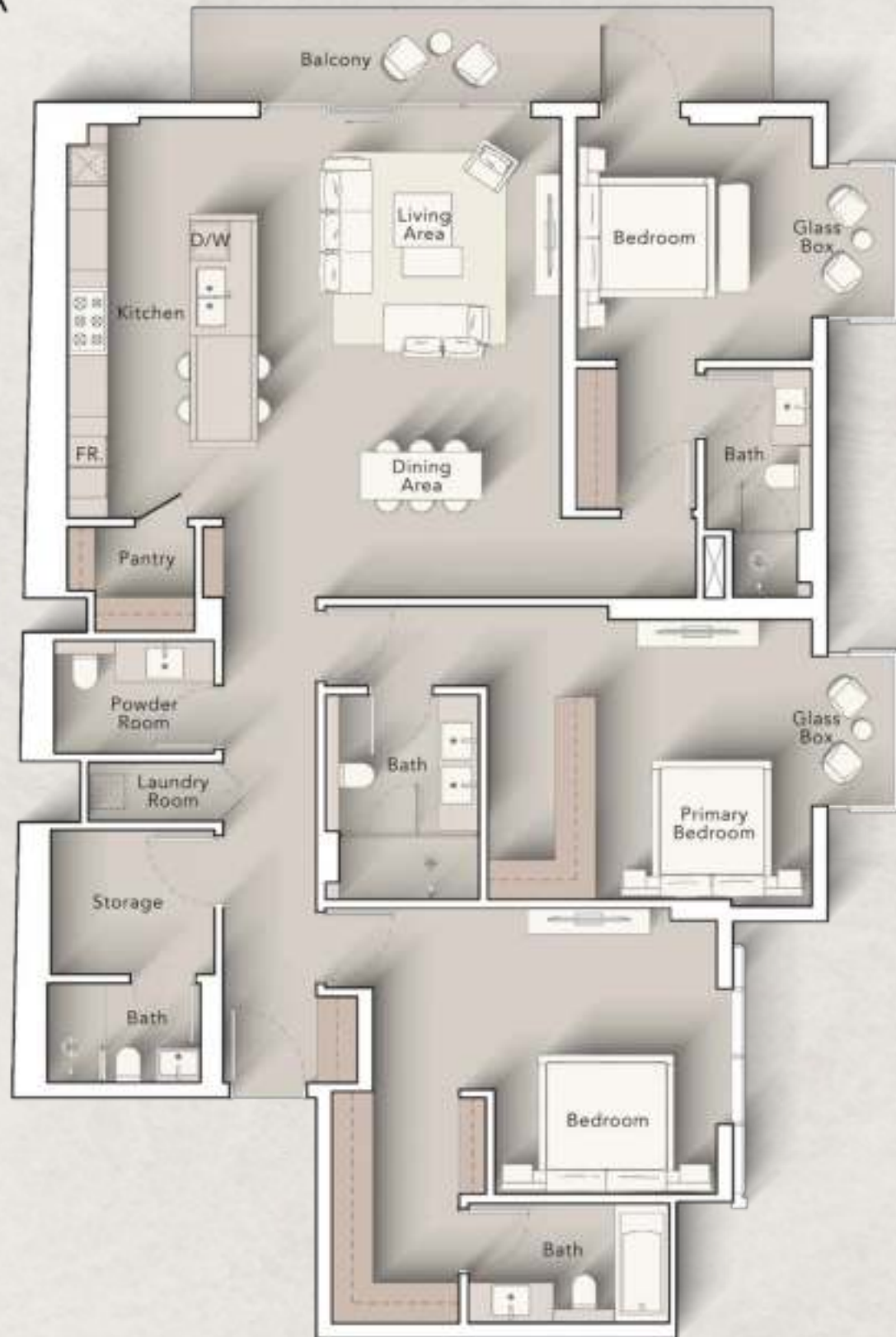
**2<sup>nd</sup> Floor:**



**3<sup>rd</sup> - 10<sup>th</sup> Floor:**

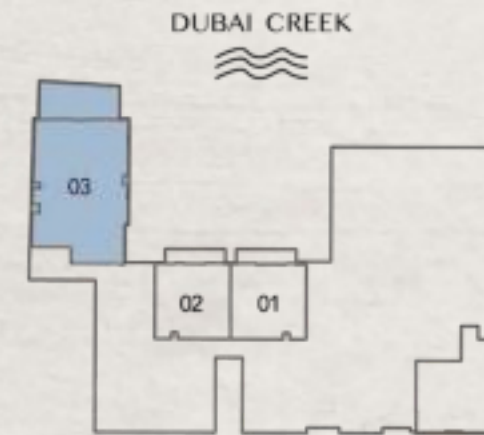


**3 BEDROOM  
TYPE A**

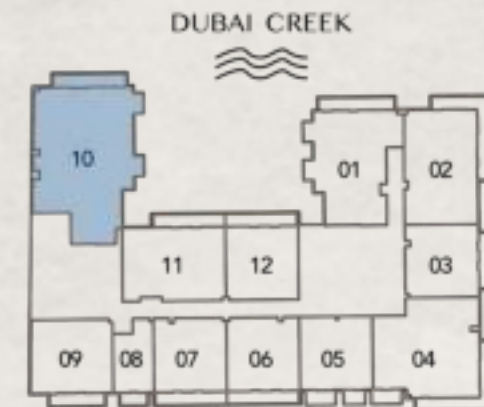


Internal Living Area : 2011.99 Sq. Ft  
 Outdoor Living Area : 135.84 Sq. Ft  
 Total Living Area : 2147.83 Sq. Ft

**2<sup>nd</sup> Floor:**

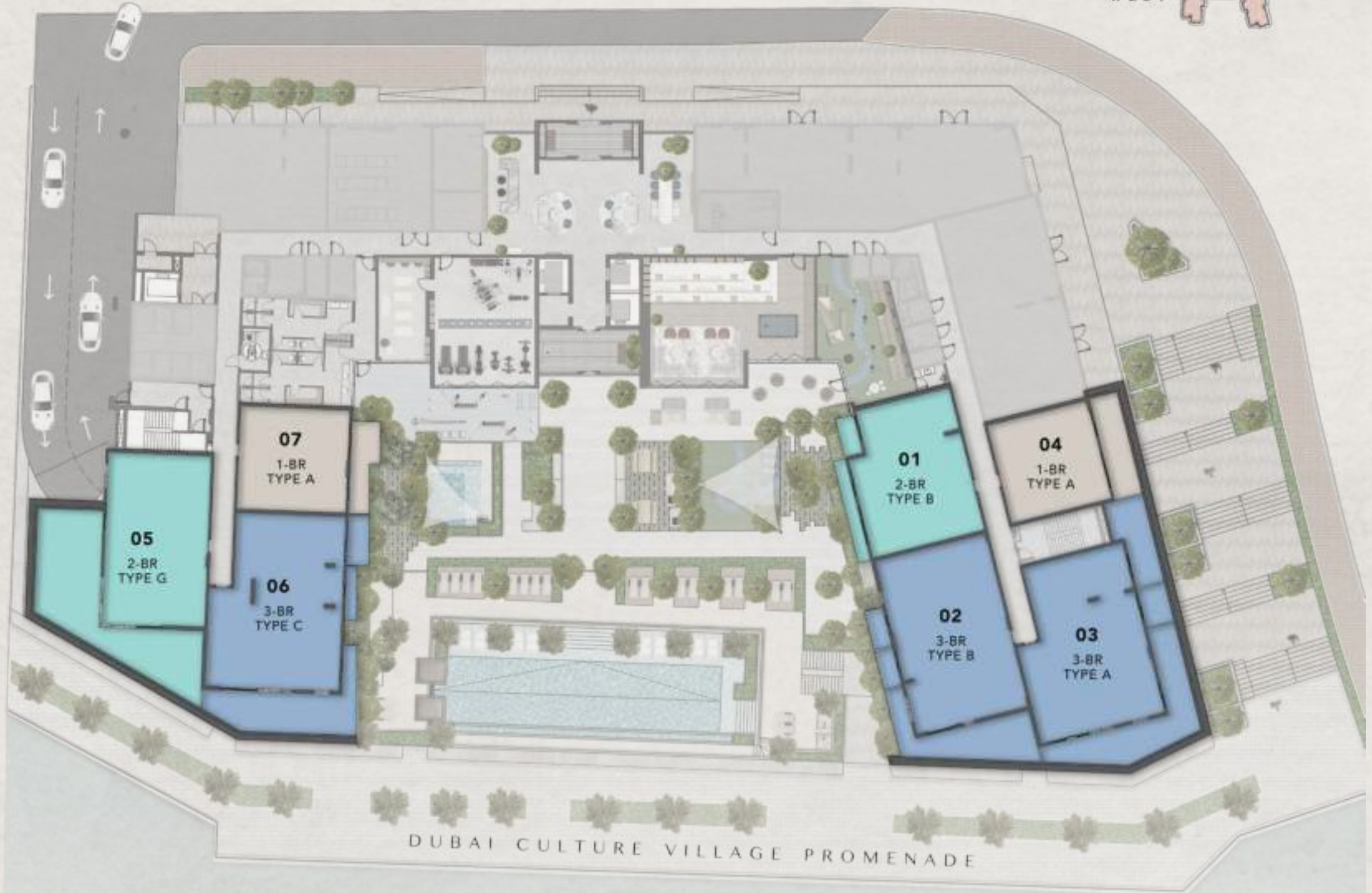
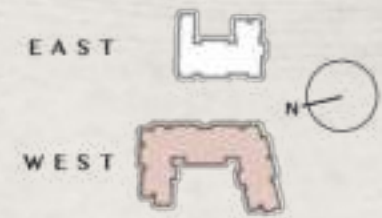


**3<sup>rd</sup> - 10<sup>th</sup> Floor:**





WEST  
FLOOR PLANS

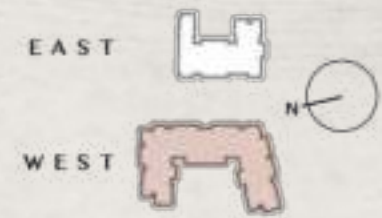


**2<sup>ND</sup> FLOOR PLAN**

-  1 BEDROOM
-  2 BEDROOM
-  3 BEDROOM

DUBAI CULTURE VILLAGE PROMENADE

DUBAI CREEK



3<sup>RD</sup> - 10<sup>TH</sup>  
FLOOR PLAN

-  STUDIO
-  1 BEDROOM
-  2 BEDROOM
-  3 BEDROOM

**STUDIO  
TYPE A**



Internal Living Area	:	<b>440.67 Sq. Ft</b>
Outdoor Living Area	:	<b>44.78 Sq. Ft</b>
Total Living Area	:	<b>485.45 Sq. Ft</b>

**2<sup>nd</sup> Floor:**



**3<sup>rd</sup> - 10<sup>th</sup> Floor:**

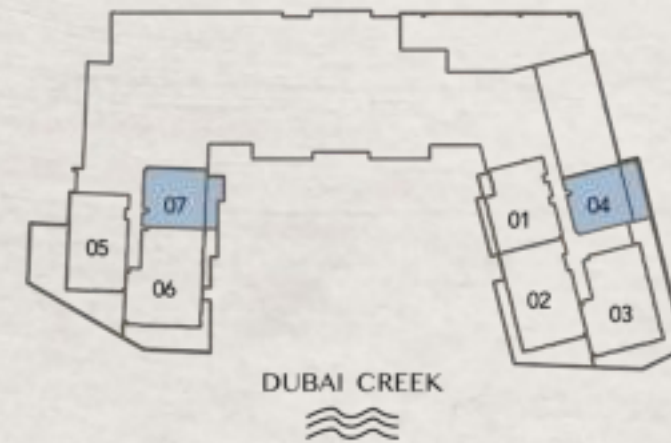


**1 BEDROOM  
TYPE A**



Internal Living Area : 763.27 Sq. Ft  
 Outdoor Living Area : 131.32 Sq. Ft  
 Total Living Area : 894.59 Sq. Ft

**2<sup>nd</sup> Floor:**



**3<sup>rd</sup> - 10<sup>th</sup> Floor:**



**1 BEDROOM  
TYPE B**



Internal Living Area : 753.80 Sq. Ft  
 Outdoor Living Area : 93.54 Sq. Ft  
 Total Living Area : 847.34 Sq. Ft

**2<sup>nd</sup> Floor:**



**3<sup>rd</sup> - 10<sup>th</sup> Floor:**





**2 BEDROOM  
TYPE A**



Internal Living Area : 1202.76 Sq. Ft  
 Outdoor Living Area : 154.79 Sq. Ft  
 Total Living Area : 1357.54 Sq. Ft

**2<sup>nd</sup> Floor:**



**3<sup>rd</sup> - 10<sup>th</sup> Floor:**

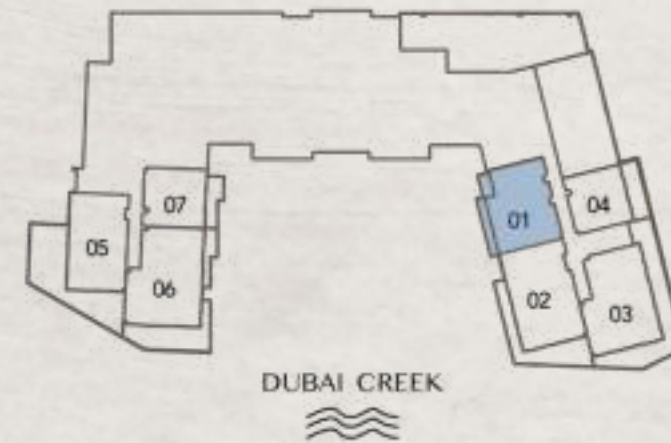


**2 BEDROOM  
TYPE B**



Internal Living Area : 1152.71 Sq. Ft  
 Outdoor Living Area : 180.08 Sq. Ft  
 Total Living Area : 1332.79 Sq. Ft

**2<sup>nd</sup> Floor:**



**3<sup>rd</sup> - 10<sup>th</sup> Floor:**



**2 BEDROOM  
TYPE C**



Internal Living Area : 1324.07 Sq. Ft  
 Outdoor Living Area : 81.91 Sq. Ft  
 Total Living Area : 1405.98 Sq. Ft

**2<sup>nd</sup> Floor:**



**3<sup>rd</sup> - 10<sup>th</sup> Floor:**



**2 BEDROOM  
TYPE D**



Internal Living Area : 1121.06 Sq. Ft  
 Outdoor Living Area : 208.82 Sq. Ft  
 Total Living Area : 1329.88 Sq. Ft

**2<sup>nd</sup> Floor:**



**3<sup>rd</sup> - 10<sup>th</sup> Floor:**



**2 BEDROOM  
TYPE E**



Internal Living Area : 1084.25 Sq. Ft  
 Outdoor Living Area : 131.75 Sq. Ft  
 Total Living Area : 1216.00 Sq. Ft

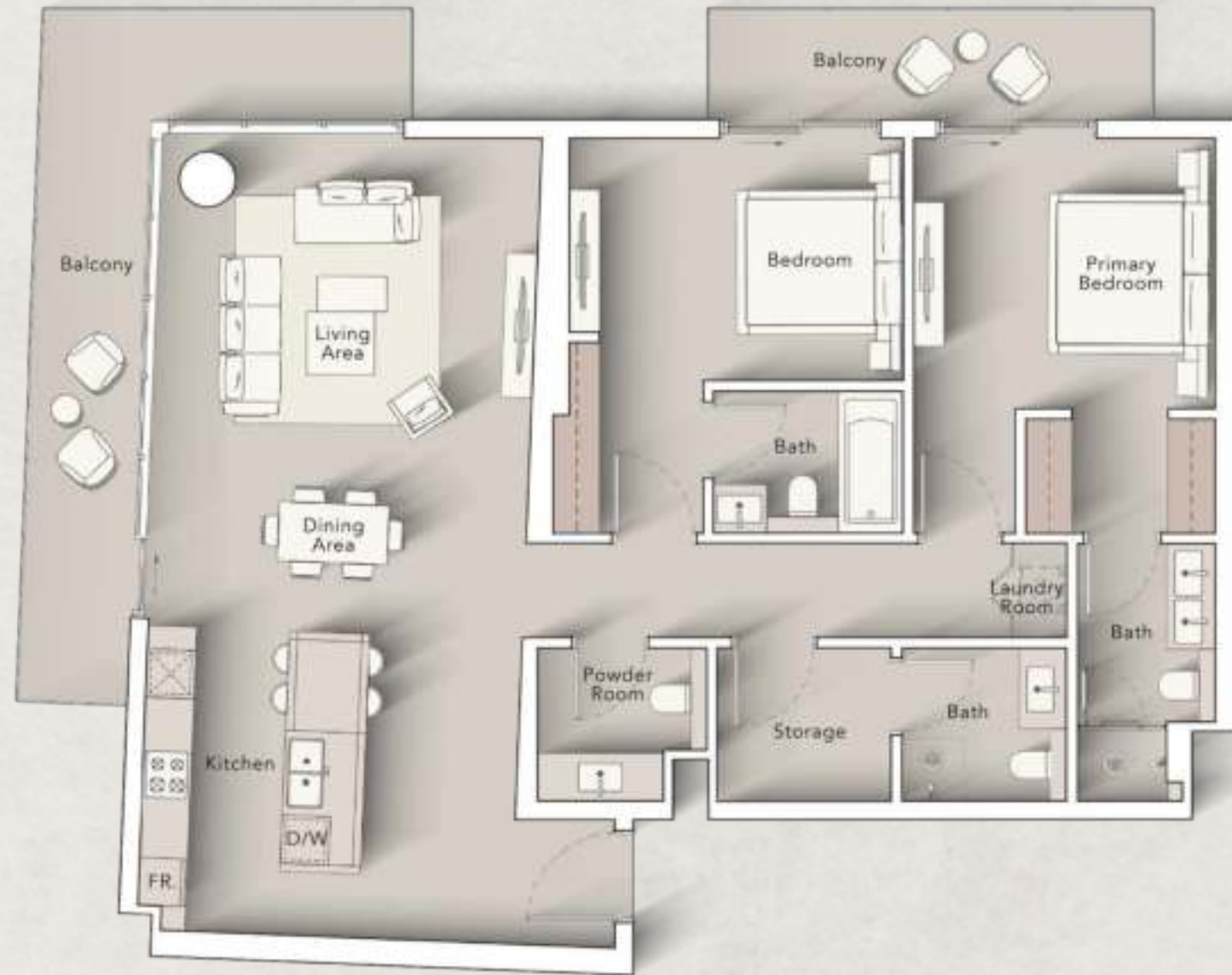
**2<sup>nd</sup> Floor:**



**3<sup>rd</sup> - 10<sup>th</sup> Floor:**



**2 BEDROOM  
TYPE F**



Internal Living Area : 1349.47 Sq. Ft  
 Outdoor Living Area : 273.83 Sq. Ft  
 Total Living Area : 1623.31 Sq. Ft

**2<sup>nd</sup> Floor:**



**3<sup>rd</sup> - 10<sup>th</sup> Floor:**



**2 BEDROOM  
TYPE G**



Internal Living Area : 1279.51 Sq. Ft  
 Outdoor Living Area : 254.78 Sq. Ft  
 Total Living Area : 1534.29 Sq. Ft

**2<sup>nd</sup> Floor:**



**3<sup>rd</sup> - 10<sup>th</sup> Floor:**



**2 BEDROOM  
TYPE H**



Internal Living Area : 1171.33 Sq. Ft  
 Outdoor Living Area : 98.38 Sq. Ft  
 Total Living Area : 1269.71 Sq. Ft

**2<sup>nd</sup> Floor:**



**3<sup>rd</sup> - 10<sup>th</sup> Floor:**





# 3 BEDROOM TYPE A



Internal Living Area : 1525.78 Sq. Ft  
 Outdoor Living Area : 341.22 Sq. Ft  
 Total Living Area : 1867.00 Sq. Ft

## 2<sup>nd</sup> Floor:



## 3<sup>rd</sup> - 10<sup>th</sup> Floor:

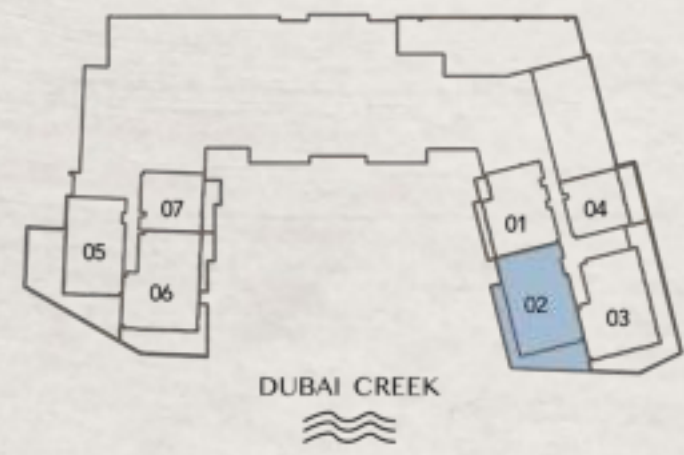


### 3 BEDROOM TYPE B



Internal Living Area : 1563.14 Sq. Ft  
 Outdoor Living Area : 235.41 Sq. Ft  
 Total Living Area : 1798.54 Sq. Ft

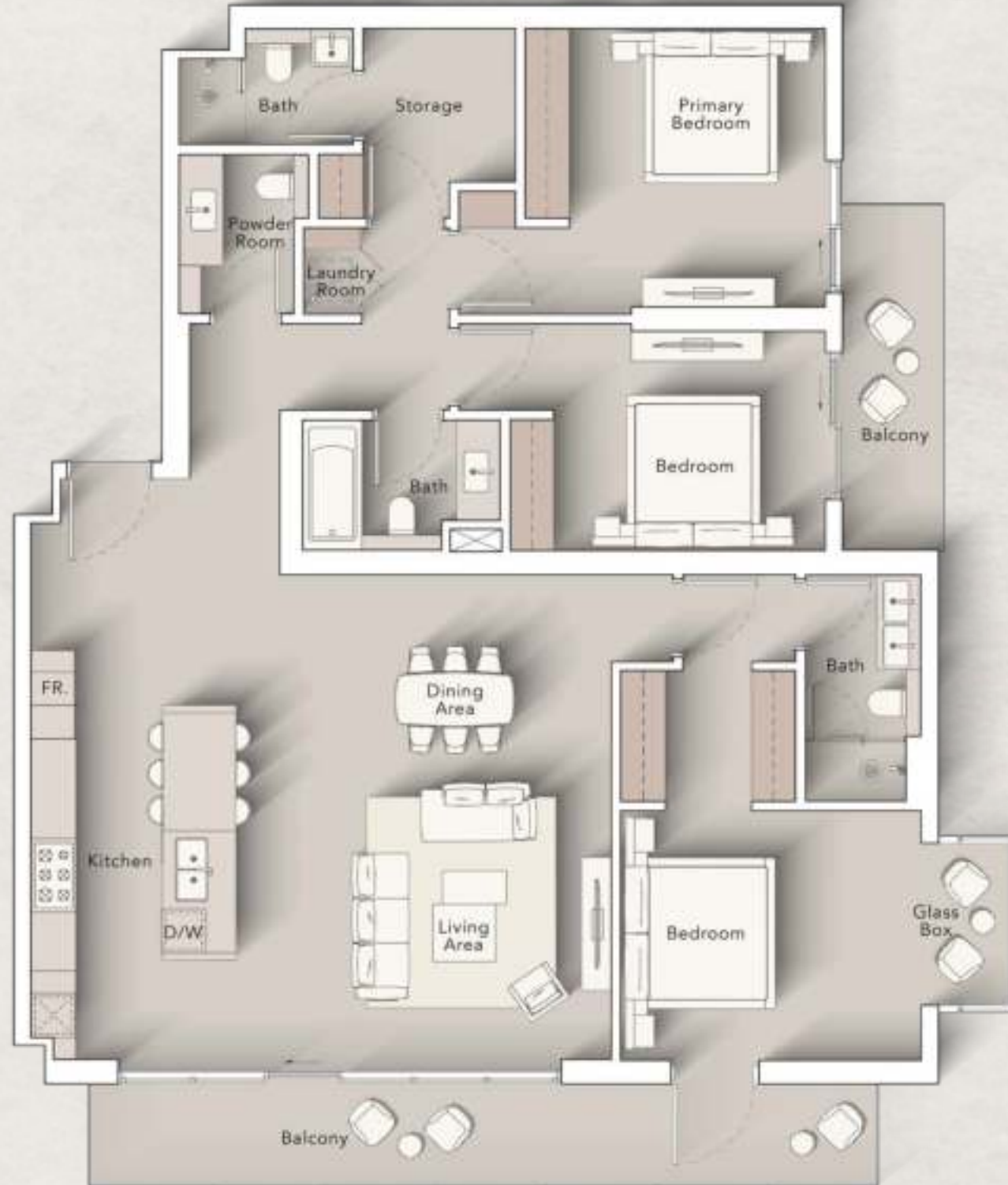
#### 2<sup>nd</sup> Floor:



#### 3<sup>rd</sup> - 10<sup>th</sup> Floor:

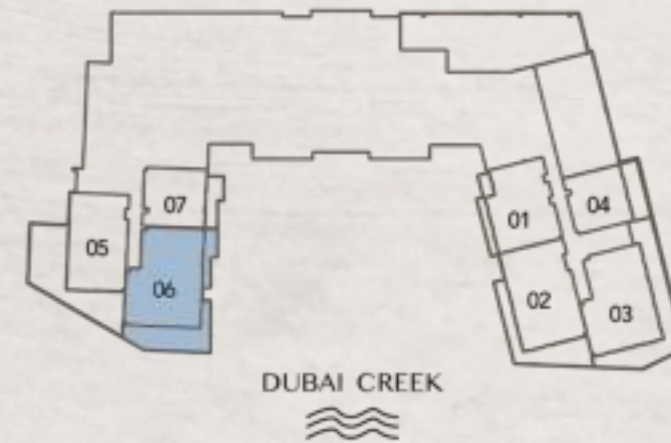


**3 BEDROOM  
TYPE C**



Internal Living Area : 1682.61 Sq. Ft  
 Outdoor Living Area : 248.75 Sq. Ft  
 Total Living Area : 1931.37 Sq. Ft

**2<sup>nd</sup> Floor:**



**3<sup>rd</sup> - 10<sup>th</sup> Floor:**

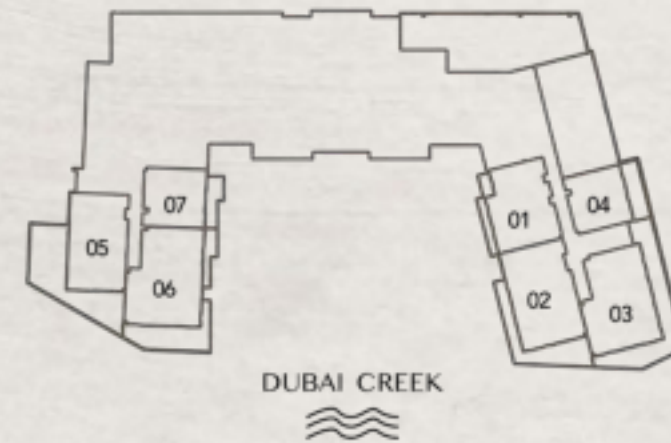


**3 BEDROOM  
TYPE D**



Internal Living Area : 1778.84 Sq. Ft  
 Outdoor Living Area : 99.89 Sq. Ft  
 Total Living Area : 1878.73 Sq. Ft

**2<sup>nd</sup> Floor:**



**3<sup>rd</sup> - 10<sup>th</sup> Floor:**





# TOTALLY HOME

REAL ESTATE



[totallyhomerealestate](#)



[totallyhomerealestate](#)



[totallyhomerealestate](#)



[totallyhomerealestate.com](#)

 +971 54 289 7686  [sales@totallyhomerealestate.com](mailto:sales@totallyhomerealestate.com)

 [support@totallyhomerealestate.com](mailto:support@totallyhomerealestate.com)  [admin@totallyhomerealestate.com](mailto:admin@totallyhomerealestate.com)

 Office 103, Building 6 Bay Square Tower, Business Bay PO Box 418317, Dubai