



HIBISCUS 7 Bedrooms



CORAL LIVING 7 Bedrooms



RED AURORA 7 Bedrooms



PORCELAIN ROSES 7 Bedrooms



CRANBERRY SKY 7 Bedrooms



TERRACOTTA 7 Bedrooms



REDWOOD 7 Bedrooms



RUBY SUNSET 7 Bedrooms

HIBISCUS

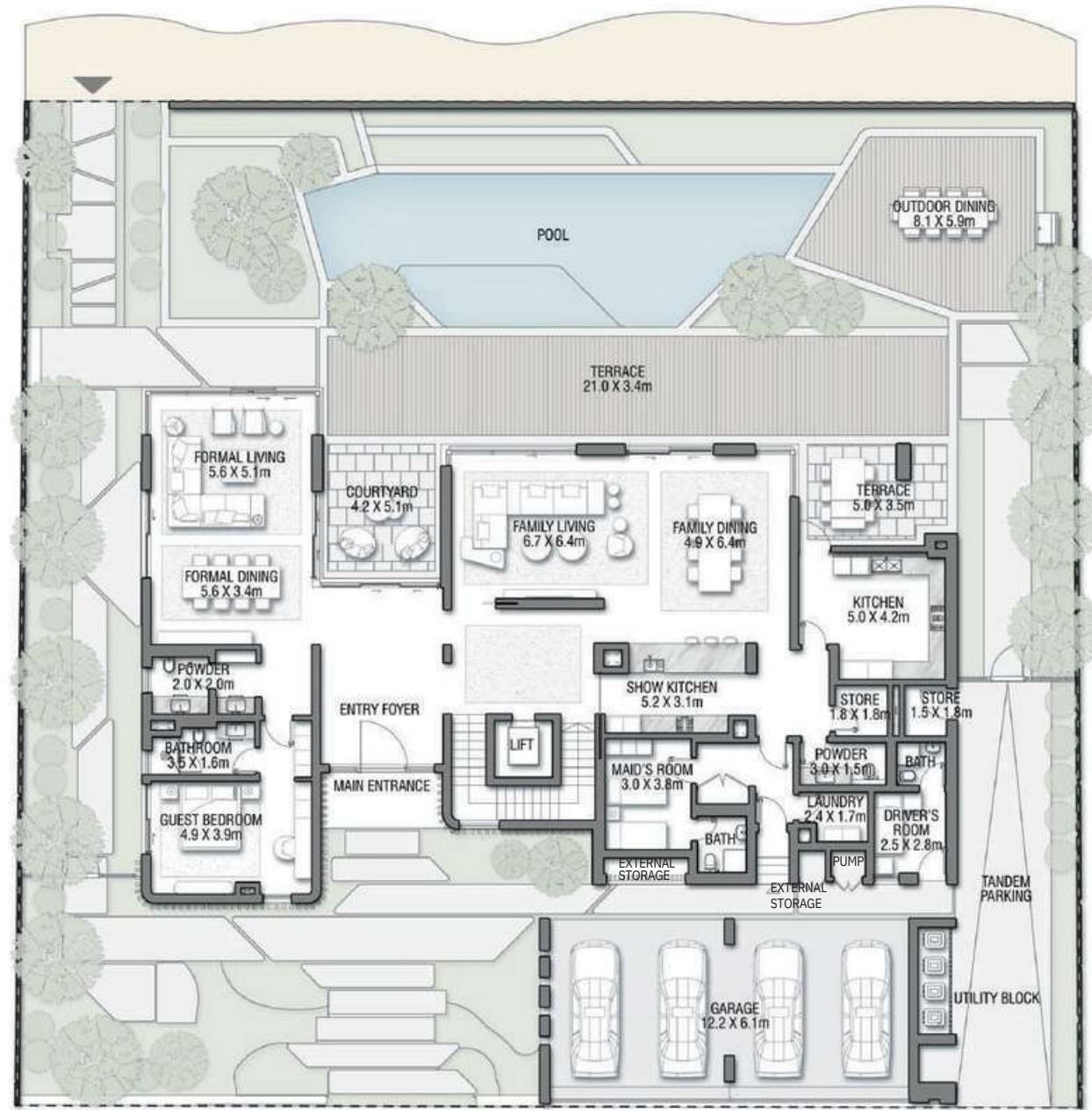


Street Side

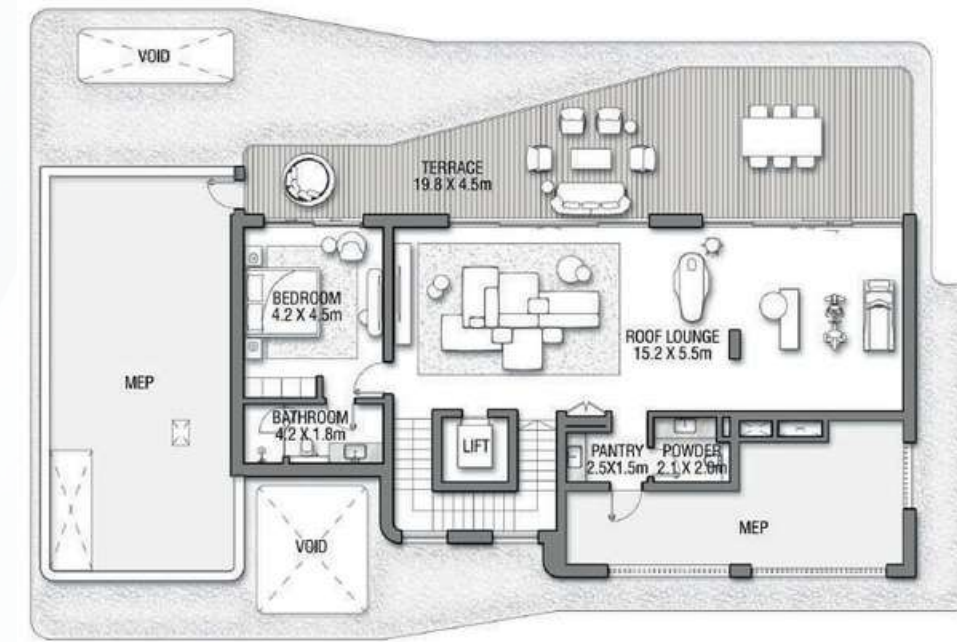


Beach Side

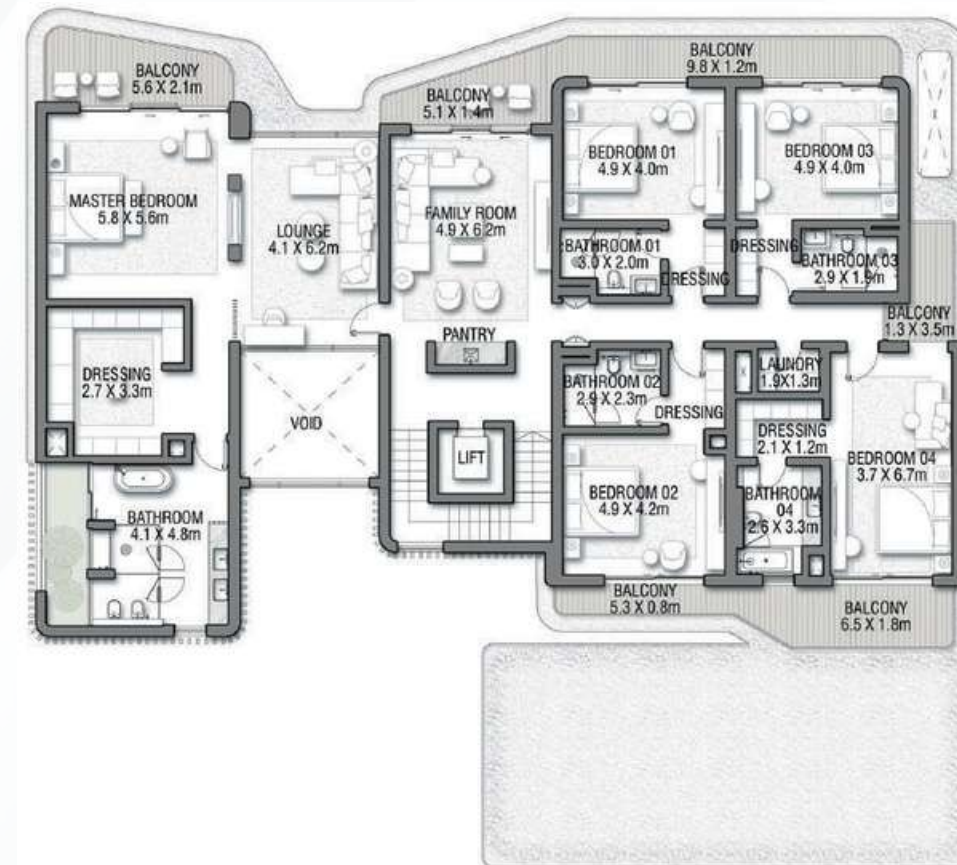
Live in the Masterpiece



GROUND FLOOR



SECOND FLOOR



FIRST FLOOR

VILLA

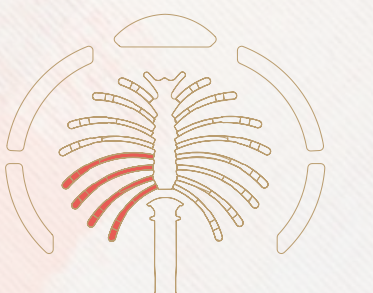
HIBISCUS

Coral Villas Collection

G + 2

7 BEDROOMS + FORMAL AND FAMILY LOUNGES  
+ ROOF LOUNGE AND TERRACE

FLOOR TYPE	SQ. M.	SQ. FT.
Ground Floor	353.21	3,801.92
Balcony / Terrace / Porch-GF	20.94	225.40
First Floor Area	347.64	3,741.97
Balcony / Terrace - First Floor	74.18	798.47
Second Floor Area	157.93	1,699.94
Balcony / Terrace - Second	75.18	809.23
Floor Garage - Covered	86.45	930.54
<b>TOTAL BUILT-UP AREA</b>	<b>1,115.5312</b>	<b>11,007.46</b>
Garage with Pergola	0.0	0.0
<b>TOTAL AREA</b>	<b>1,115.5312</b>	<b>11,007.46</b>



▲ Back to top

Numbers, square footage and floor plans are approximate. Final dimensions, square footage and floor plans may vary and are subject to change without notice. The developer reserves the right to make revisions. Built-Up Area is measured in accordance with Dubai Land Department standards. Plans, artistic renderings, landscaping and images are for illustrative purposes only and are subject to change without notice. Landscape shown is indicative and not provided by the developer. Pool layout and configuration shown on floor plans are for general illustrative purposes only and are not provided by the developer. The Bespoke Edition Option offered to the buyer at additional price will include a standard pool offering.

CORAL LIVING

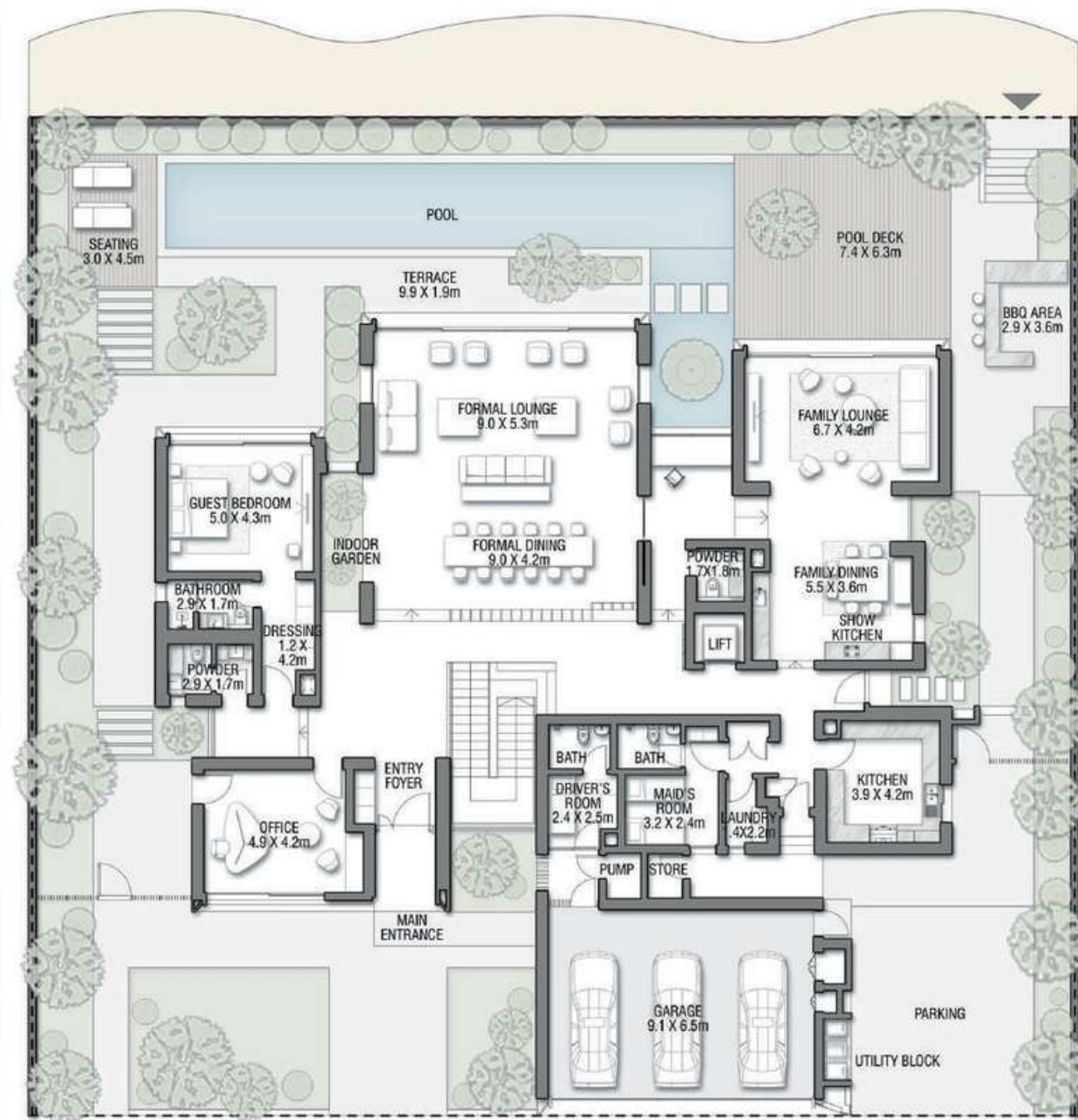


Street Side



Beach Side

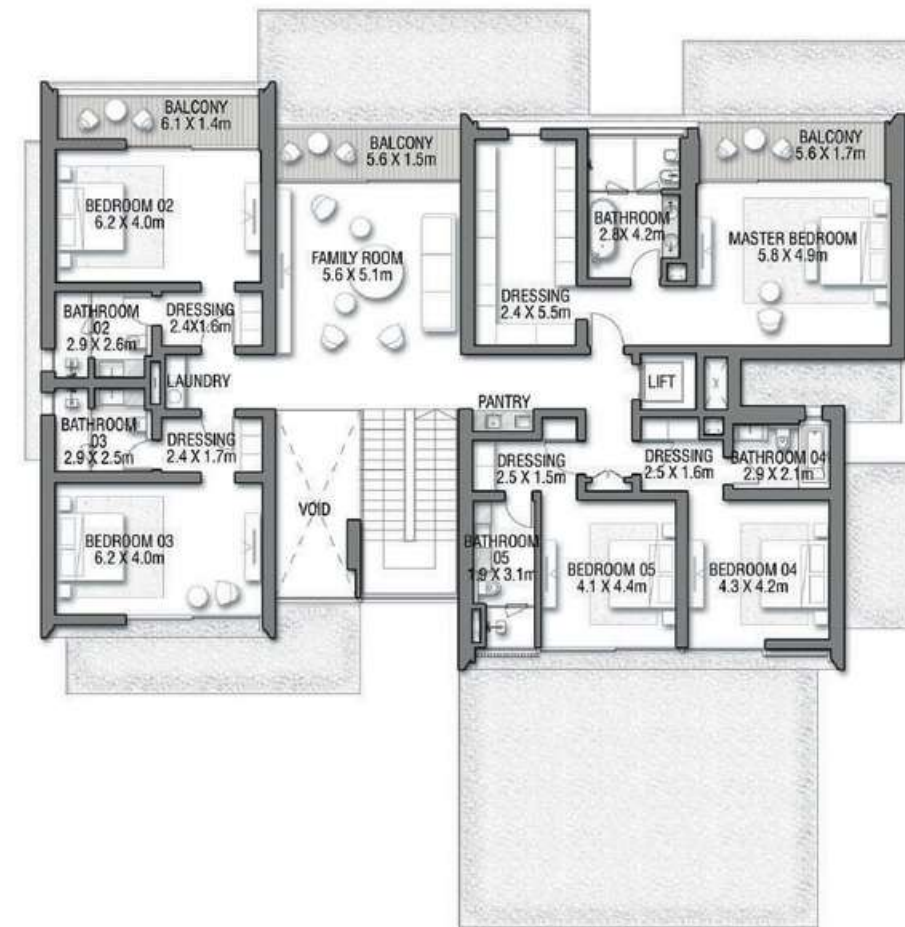
Live in the Masterpiece



GROUND FLOOR



SECOND FLOOR



FIRST FLOOR

VILLA

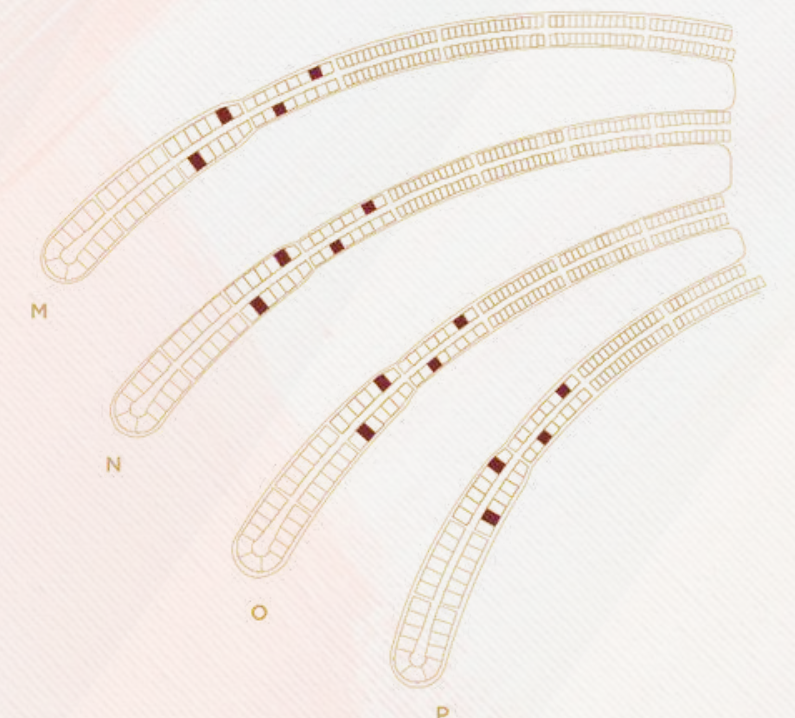
CORAL LIVING

Coral Villas Collection

G + 2

7 BEDROOMS + FORMAL AND FAMILY LOUNGES + OFFICE + ROOF LOUNGE AND TERRACE

FLOOR TYPE	SQ. M.	SQ. FT.
Ground Floor	421.51	4,537.10
Balcony / Terrace / Porch-GF	7.24	77.93
First Floor Area	328.33	3,534.11
Balcony / Terrace - First Floor	26.35	283.63
Second Floor Area	138.29	1,488.54
Balcony / Terrace - Second	35.84	385.78
Floor Garage - Covered	85.00	914.93
<b>TOTAL BUILT-UP AREA</b>	<b>1,042.56</b>	<b>11,222.02</b>
Garage with Pergola	0.0	0.0
<b>TOTAL AREA</b>	<b>1,042.56</b>	<b>11,222.02</b>



▲ Back to top

Numbers, square footage and floor plans are approximate. Final dimensions, square footage and floor plans may vary and are subject to change without notice. The developer reserves the right to make revisions. Built-Up Area is measured in accordance with Dubai Land Department standards. Plans, artistic renderings, landscaping and images are for illustrative purposes only and are subject to change without notice. Landscape shown is indicative and not provided by the developer. Pool layout and configuration shown on floor plans are for general illustrative purposes only and are not provided by the developer. The Bespoke Edition Option offered to the buyer at additional price will include a standard pool offering.

RED AURORA

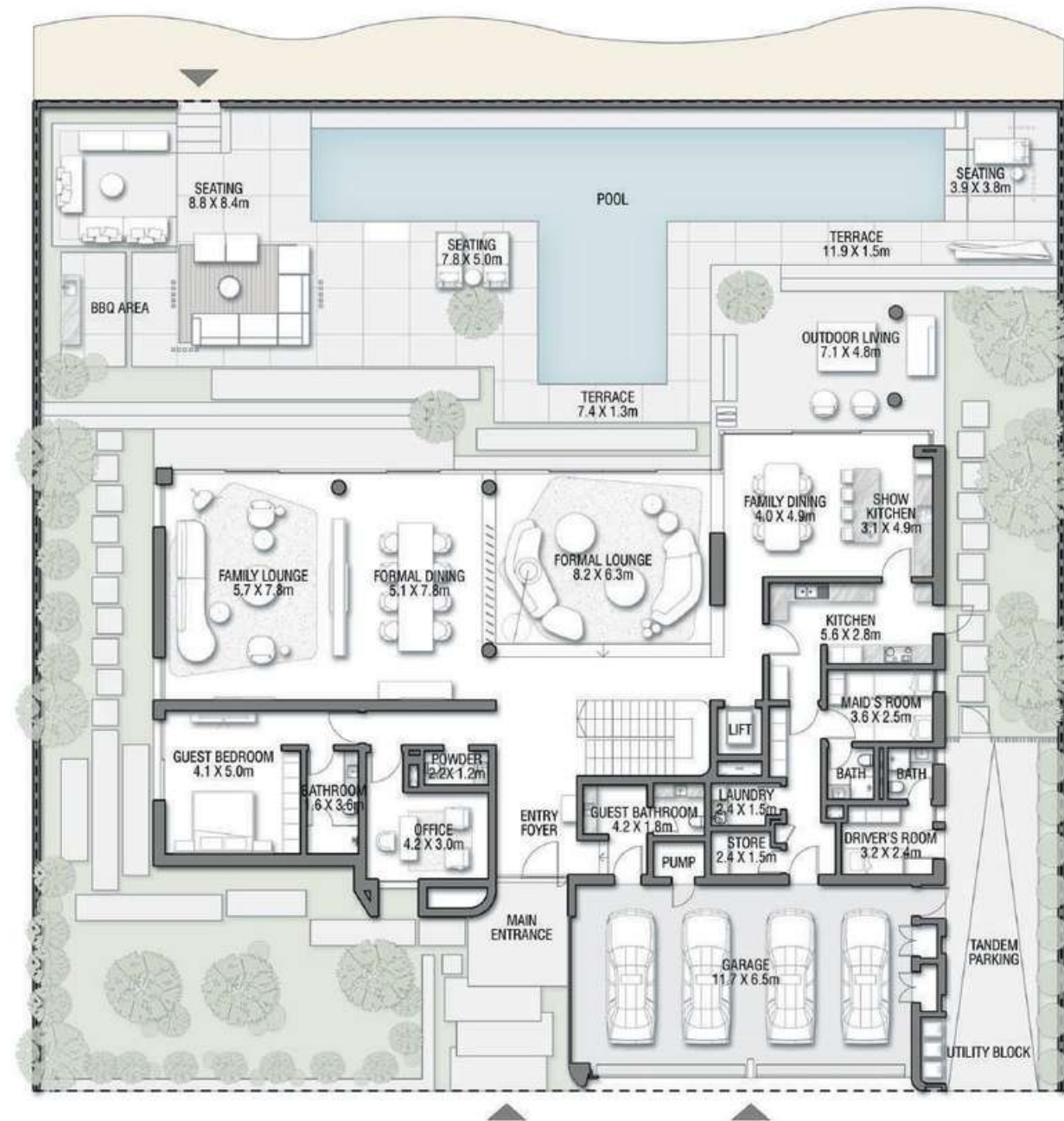


Street Side



Beach Side

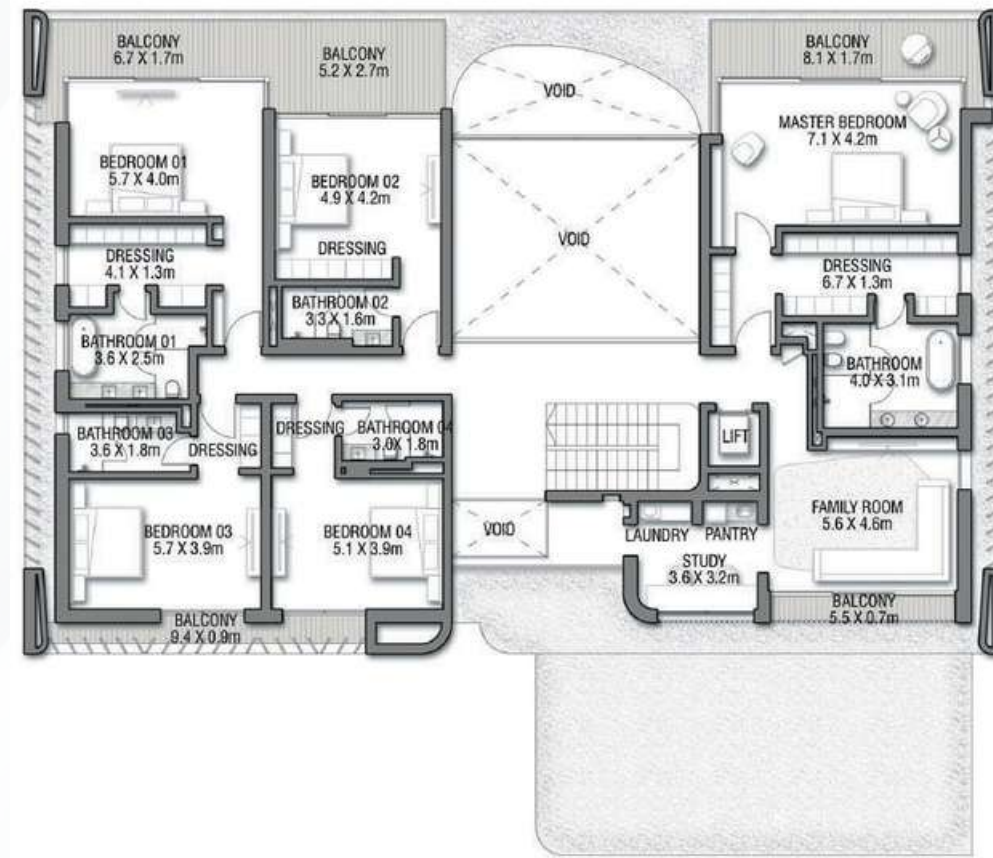
Live in the Masterpiece



GROUND FLOOR



SECOND FLOOR



FIRST FLOOR

VILLA

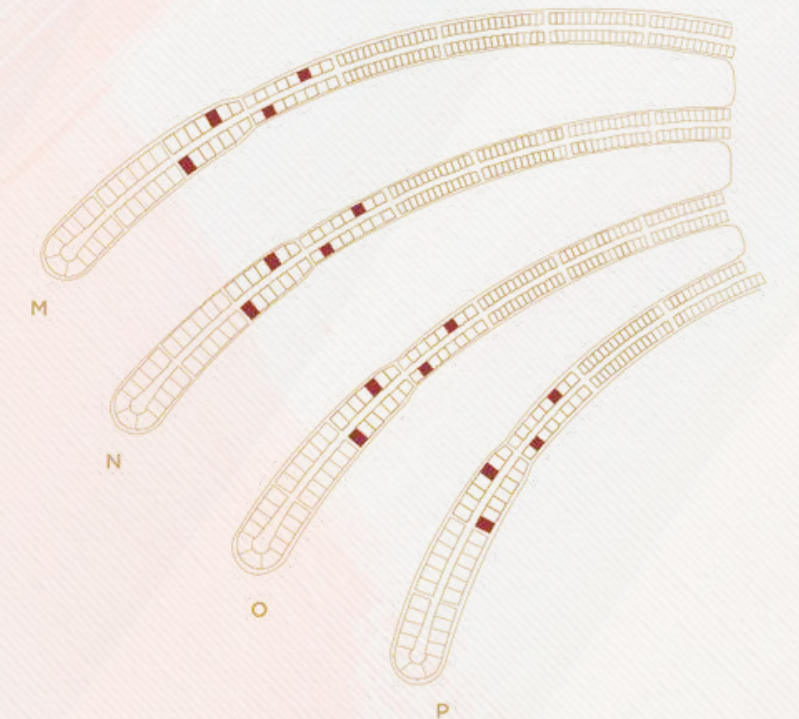
RED AURORA

Coral Villas Collection

G + 2

7 BEDROOMS + FORMAL AND FAMILY LOUNGES + OFFICE + STUDY + ROOF LOUNGE AND TERRACE

FLOOR TYPE	SQ. M.	SQ. FT.
Ground Floor	390.40	4,202.23
Balcony / Terrace / Porch-GF	0.0	0.0
First Floor Area	357.26	3,845.51
Balcony / Terrace - First Floor	46.21	497.40
Second Floor Area	151.29	1,628.47
Balcony / Terrace - Second	50.47	543.25
Floor Garage - Covered	85.01	915.04
<b>TOTAL BUILT-UP AREA</b>	<b>1,080.64</b>	<b>11,631.91</b>
Garage with Pergola	0.0	0.0
<b>TOTAL AREA</b>	<b>1,080.64</b>	<b>11,631.91</b>



Numbers, square footage and floor plans are approximate. Final dimensions, square footage and floor plans may vary and are subject to change without notice. The developer reserves the right to make revisions. Built-Up Area is measured in accordance with Dubai Land Department standards. Plans, artistic renderings, landscaping and images are for illustrative purposes only and are subject to change without notice. Landscape shown is indicative and not provided by the developer. Pool layout and configuration shown on floor plans are for general illustrative purposes only and are not provided by the developer. The Bespoke Edition Option offered to the buyer at additional price will include a standard pool offering.

PORCELAIN ROSES



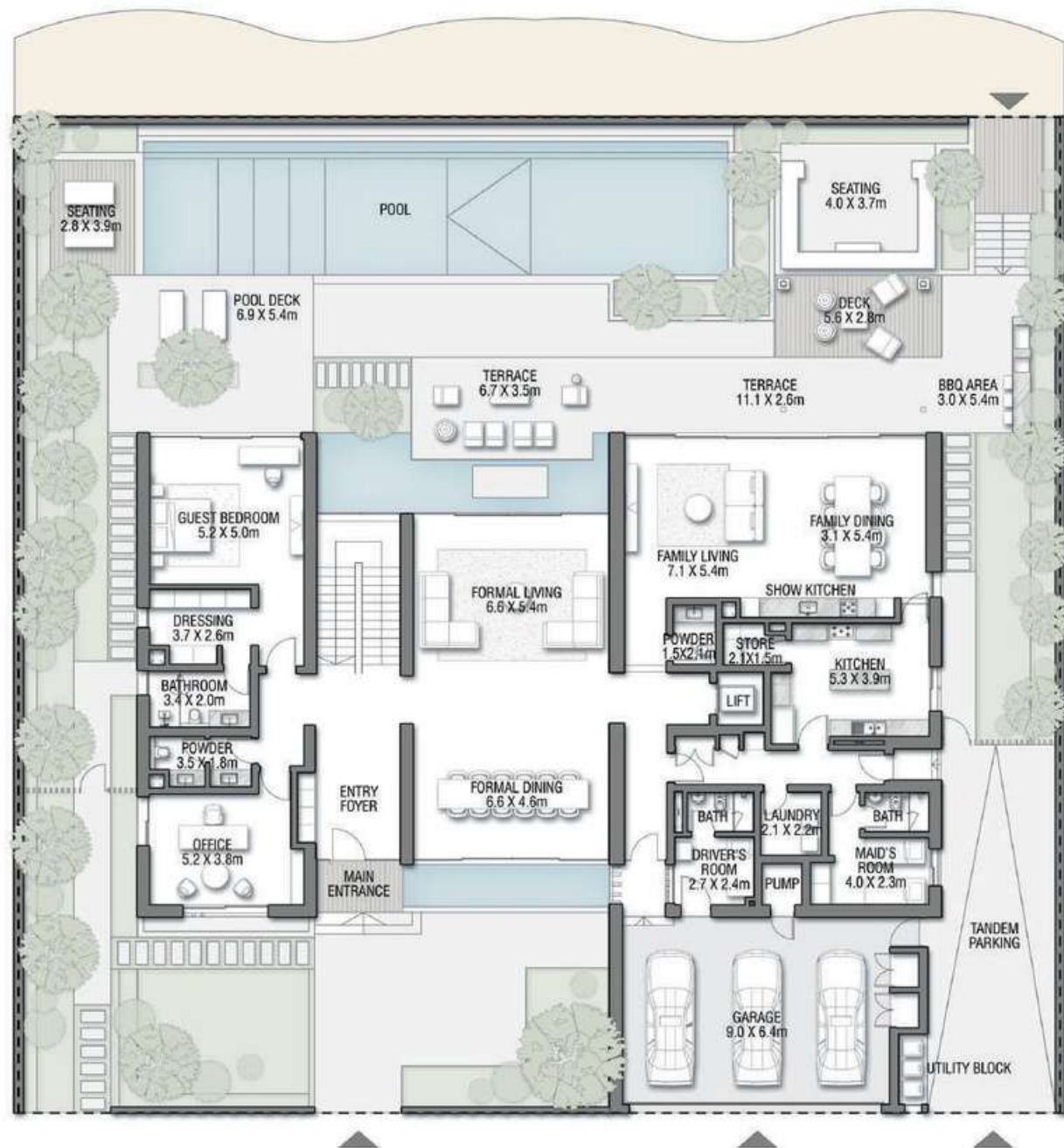
Street Side



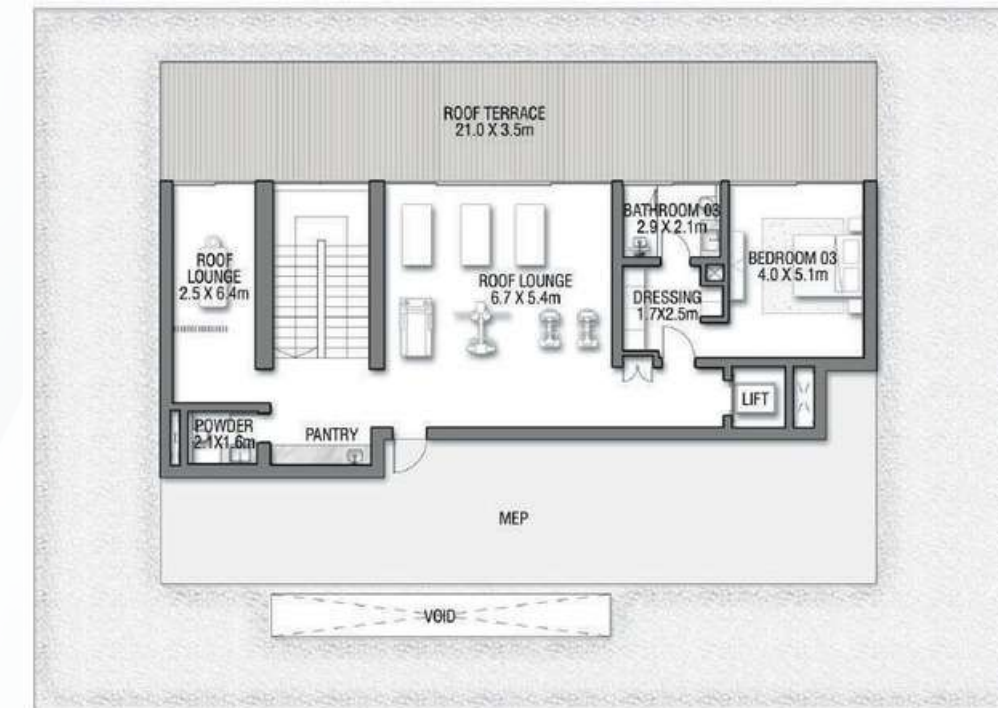
Beach Side



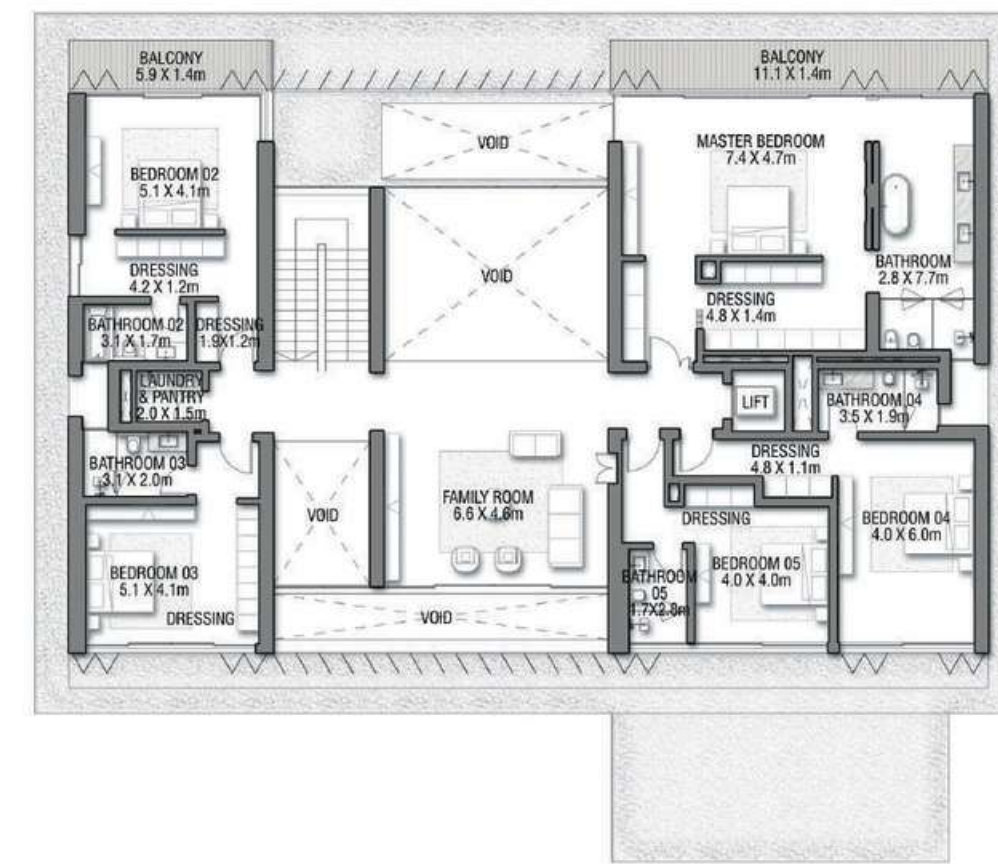
Live in the Masterpiece



GROUND FLOOR



SECOND FLOOR



FIRST FLOOR

VILLA

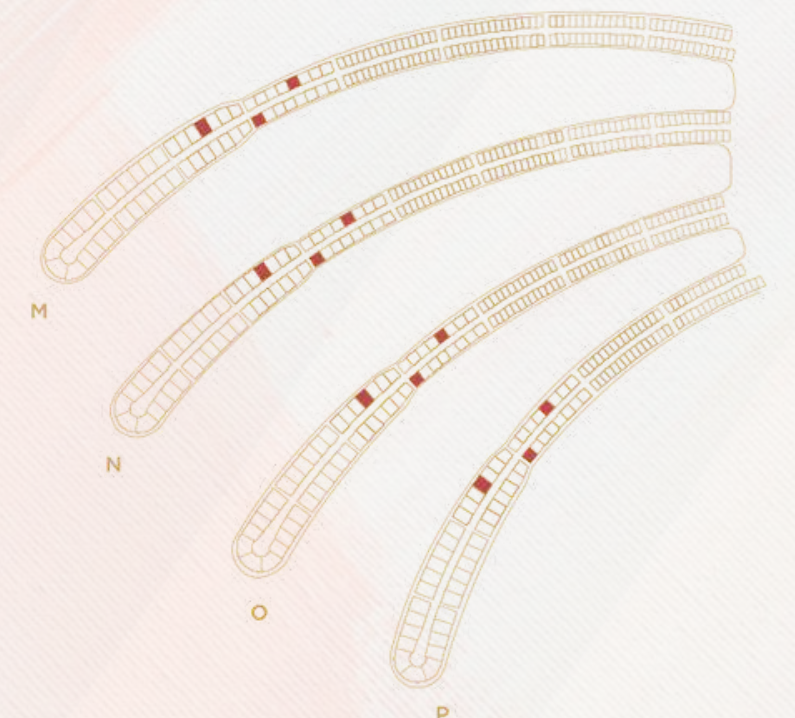
PORCELAIN ROSES

Coral Villas Collection

G + 2

7 BEDROOMS + FORMAL AND FAMILY LOUNGES + OFFICE + ROOF LOUNGE AND TERRACE

FLOOR TYPE	SQ. M.	SQ. FT.
Ground Floor	383.32	4,126.02
Balcony / Terrace / Porch-GF	2.01	21.64
First Floor Area	346.46	3,729.26
Balcony / Terrace - First Floor	25.64	275.99
Second Floor Area	161.19	1,735.03
Balcony / Terrace - Second	75.32	810.74
Floor Garage - Covered	77.30	832.05
<b>TOTAL BUILT-UP AREA</b>	<b>1,071.24</b>	<b>11,530.73</b>
Garage with Pergola	0.0	0.0
<b>TOTAL AREA</b>	<b>1,071.24</b>	<b>11,530.73</b>



▲ Back to top

Numbers, square footage and floor plans are approximate. Final dimensions, square footage and floor plans may vary and are subject to change without notice. The developer reserves the right to make revisions. Built-Up Area is measured in accordance with Dubai Land Department standards. Plans, artistic renderings, landscaping and images are for illustrative purposes only and are subject to change without notice. Landscape shown is indicative and not provided by the developer. Pool layout and configuration shown on floor plans are for general illustrative purposes only and are not provided by the developer. The Bespoke Edition Option offered to the buyer at additional price will include a standard pool offering.

60 Numbers, square footage and floor plans are approximate. Final dimensions, square footage and floor plans may vary and are subject to change without notice. The developer reserves the right to make revisions. Built-Up Area is measured in accordance with Dubai Land Department standards. Plans, artistic renderings, landscaping and images are for illustrative purposes only and are subject to change without notice. Landscape shown is indicative and not provided by the developer. Pool layout and configuration shown on floor plans are for general illustrative purposes only and are not provided by the developer. The Bespoke Edition Option offered to the buyer at additional price will include a standard pool offering.

C R A N B E R R Y S K Y

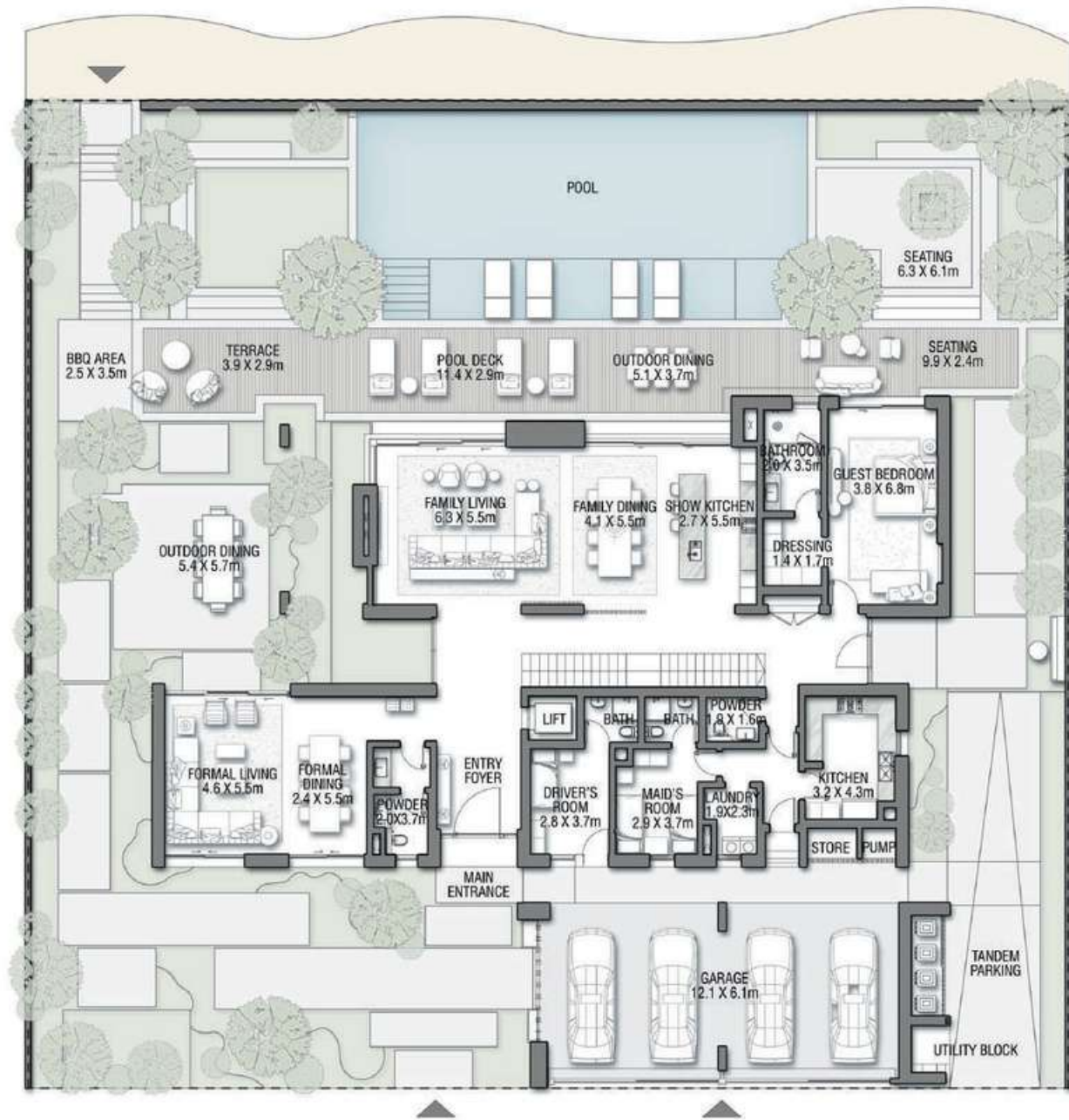


Street Side



Beach Side

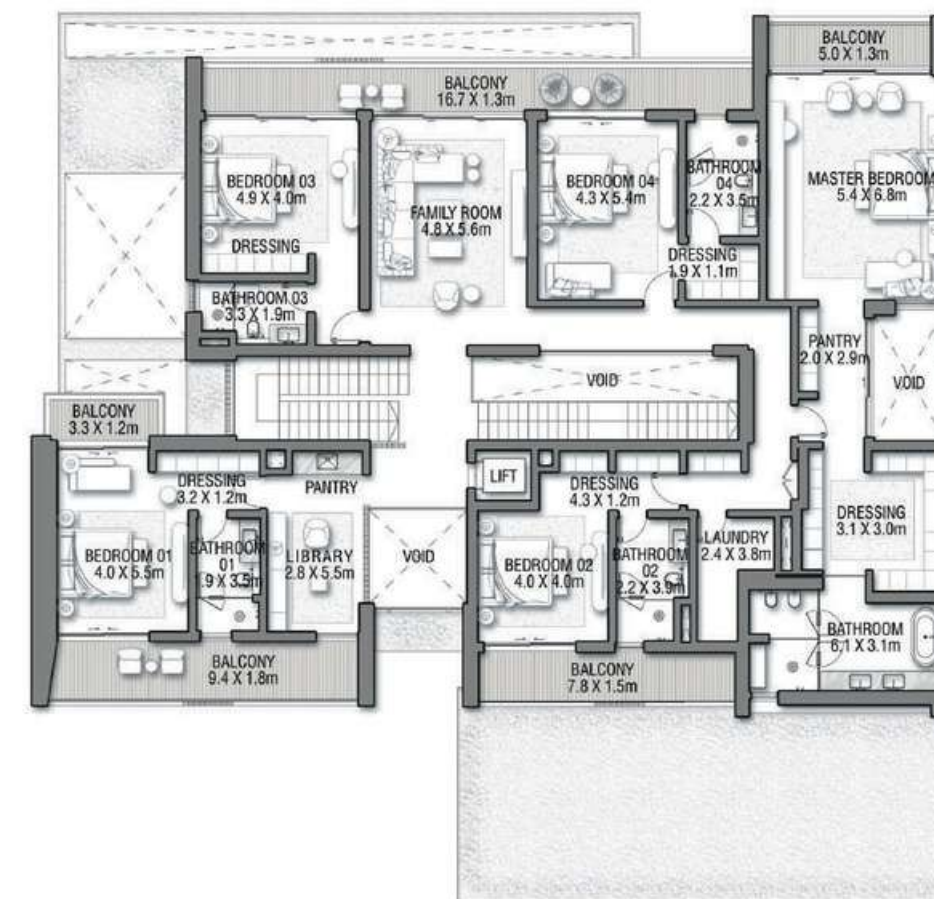
Live in the Masterpiece



GROUND FLOOR



SECOND FLOOR



FIRST FLOOR

VILLA

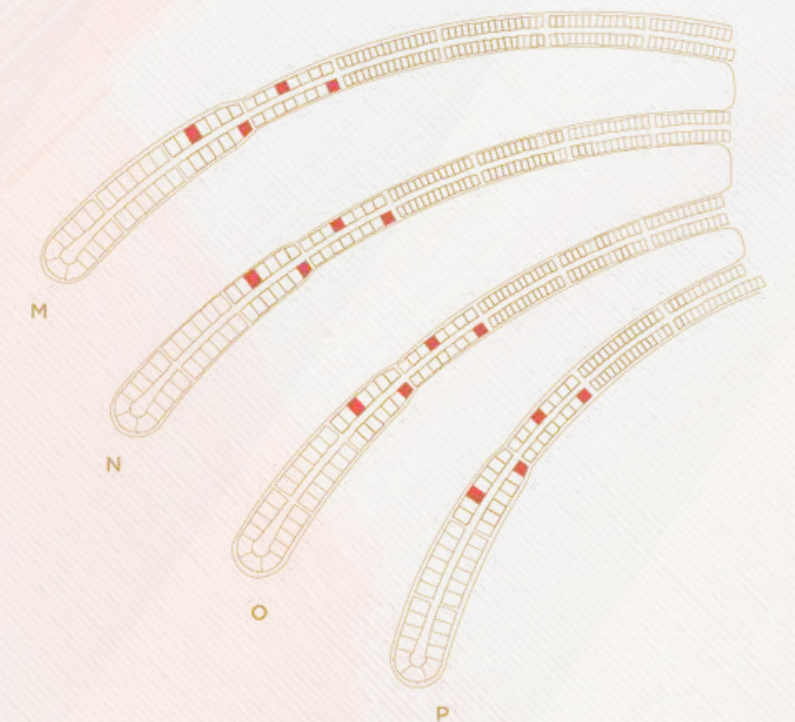
CRANBERRY SKY

Coral Villas Collection

G + 2

7 BEDROOMS + FORMAL AND FAMILY LOUNGES + LIBRARY + ROOF LOUNGE AND TERRACE

FLOOR TYPE	SQ. M.	SQ. FT.
Ground Floor	317.95	3,422.39
Balcony / Terrace / Porch-GF	4.12	44.35
First Floor Area	378.33	4,072.31
Balcony / Terrace - First Floor	72.09	775.97
Second Floor Area	155.42	1,672.93
Balcony / Terrace - Second	50.18	540.13
Floor Garage - Covered	85.45	919.78
<b>TOTAL BUILT-UP AREA</b>	<b>1,063.54</b>	<b>11,447.85</b>
Garage with Pergola	0.0	0.0
<b>TOTAL AREA</b>	<b>1,063.54</b>	<b>11,447.85</b>



▲ Back to top

Numbers, square footage and floor plans are approximate. Final dimensions, square footage and floor plans may vary and are subject to change without notice. The developer reserves the right to make revisions. Built-Up Area is measured in accordance with Dubai Land Department standards. Plans, artistic renderings, landscaping and images are for illustrative purposes only and are subject to change without notice. Landscape shown is indicative and not provided by the developer. Pool layout and configuration shown on floor plans are for general illustrative purposes only and are not provided by the developer. The Bespoke Edition Option offered to the buyer at additional price will include a standard pool offering.

Numbers, square footage and floor plans are approximate. Final dimensions, square footage and floor plans may vary and are subject to change without notice. The developer reserves the right to make revisions. Built-Up Area is measured in accordance with Dubai Land Department standards. Plans, artistic renderings, landscaping and images are for illustrative purposes only and are subject to change without notice. Landscape shown is indicative and not provided by the developer. Pool layout and configuration shown on floor plans are for general illustrative purposes only and are not provided by the developer. The Bespoke Edition Option offered to the buyer at additional price will include a standard pool offering.

TERRACOTTA

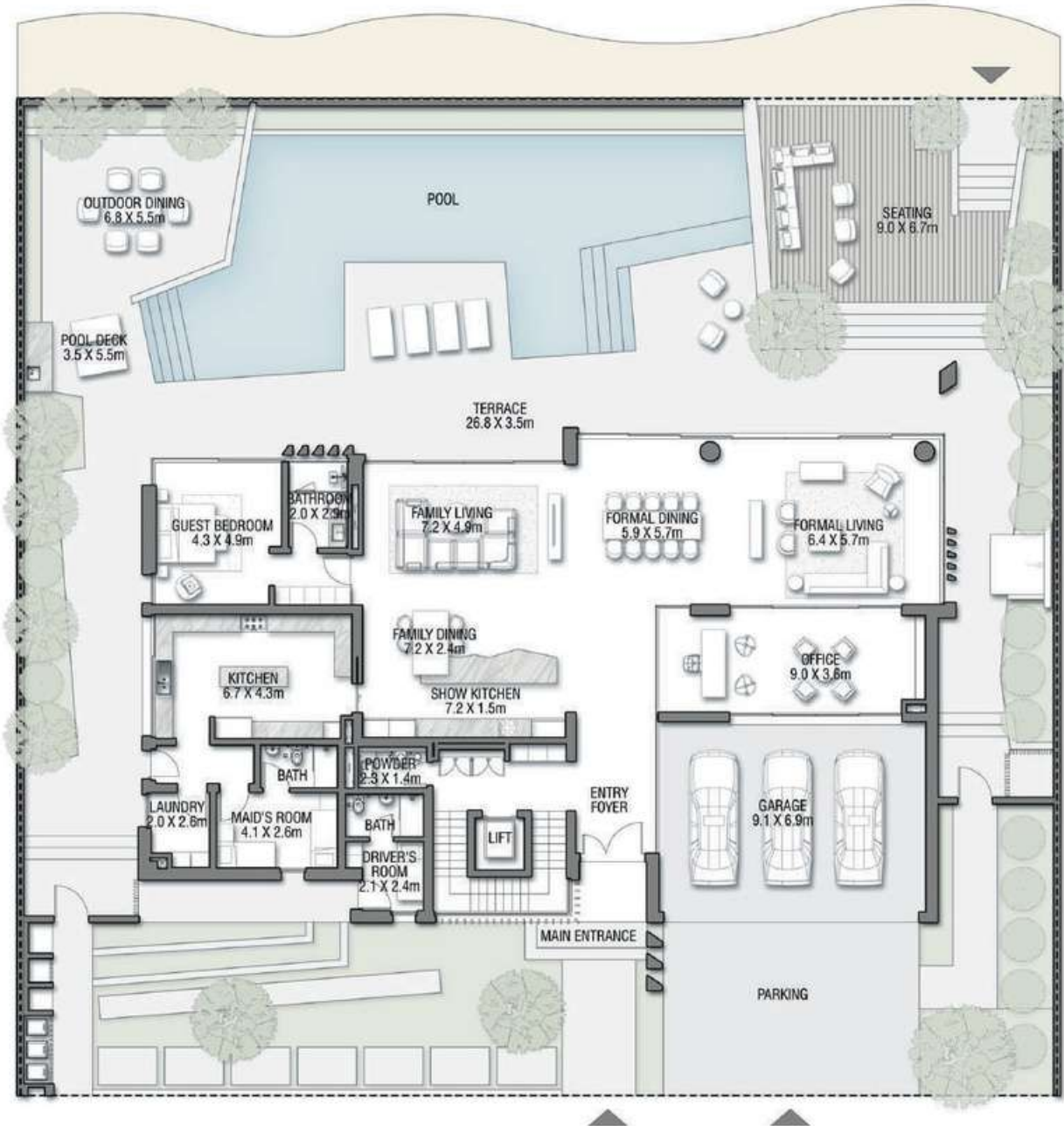


Street Side

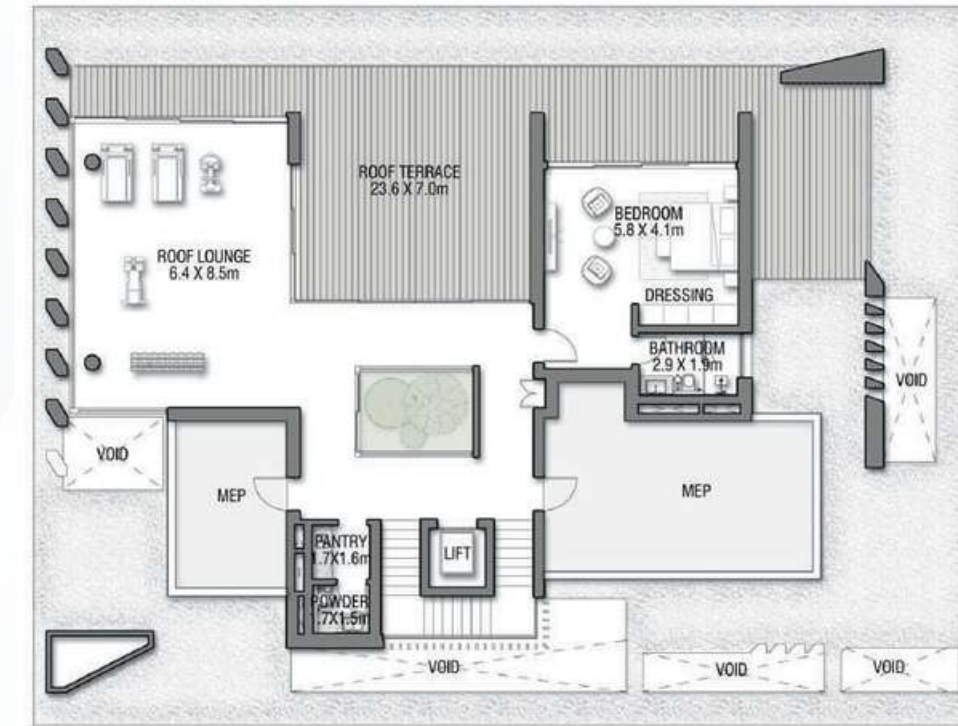


Beach Side

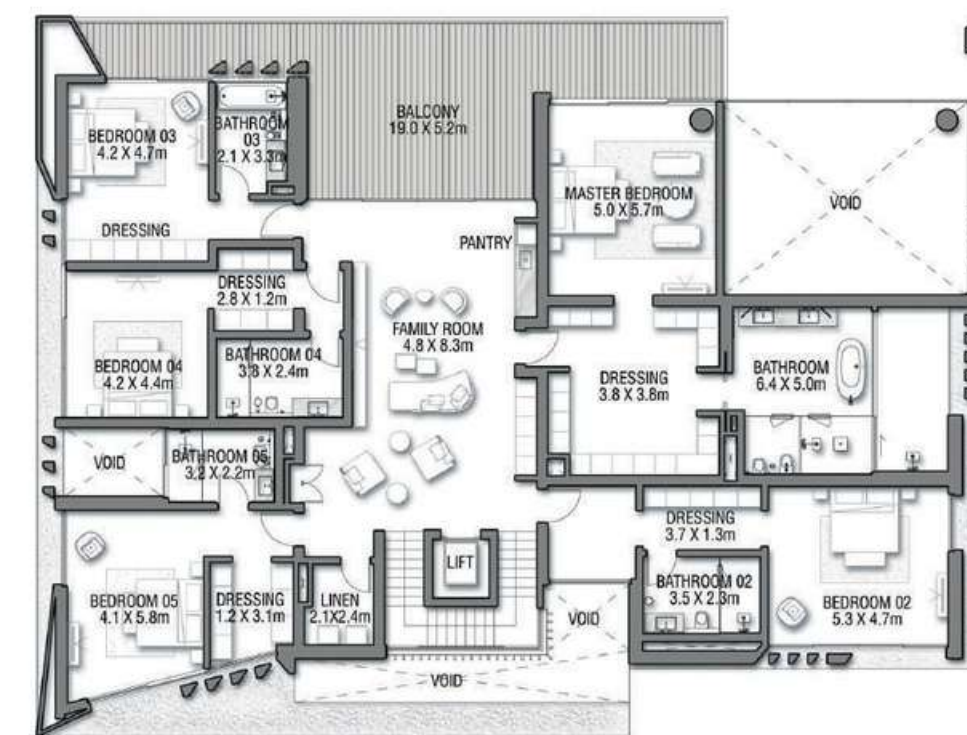
Live in the Masterpiece



GROUND FLOOR



SECOND FLOOR



FIRST FLOOR

VILLA

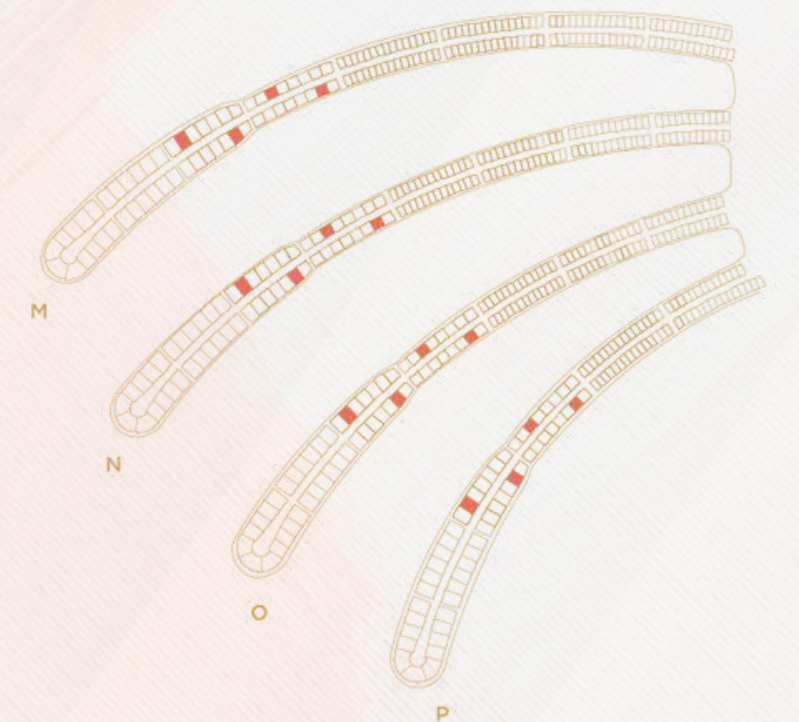
TERRACOTTA

Coral Villas Collection

G + 2

7 BEDROOMS + FORMAL AND FAMILY LOUNGES + SHOW GARAGE + OFFICE + ROOF LOUNGE AND TERRACE

FLOOR TYPE	SQ. M.	SQ. FT.
Ground Floor	351.58	3,784.38
Balcony / Terrace / Porch-GF	0.0	0.0
First Floor Area	365.54	3,934.64
Balcony / Terrace - First Floor	73.21	788.03
Second Floor Area	180.54	1,943.32
Balcony / Terrace - Second	92.52	995.88
Floor Garage - Covered	64.50	694.27
<b>TOTAL BUILT-UP AREA</b>	<b>1,127.89</b>	<b>12,140.51</b>
Garage with Pergola	0.0	0.0
<b>TOTAL AREA</b>	<b>1,127.89</b>	<b>12,140.51</b>



▲ Back to top

Numbers, square footage and floor plans are approximate. Final dimensions, square footage and floor plans may vary and are subject to change without notice. The developer reserves the right to make revisions. Built-Up Area is measured in accordance with Dubai Land Department standards. Plans, artistic renderings, landscaping and images are for illustrative purposes only and are subject to change without notice. Landscape shown is indicative and not provided by the developer. Pool layout and configuration shown on floor plans are for general illustrative purposes only and are not provided by the developer. The Bespoke Edition Option offered to the buyer at additional price will include a standard pool offering.

REDWOOD

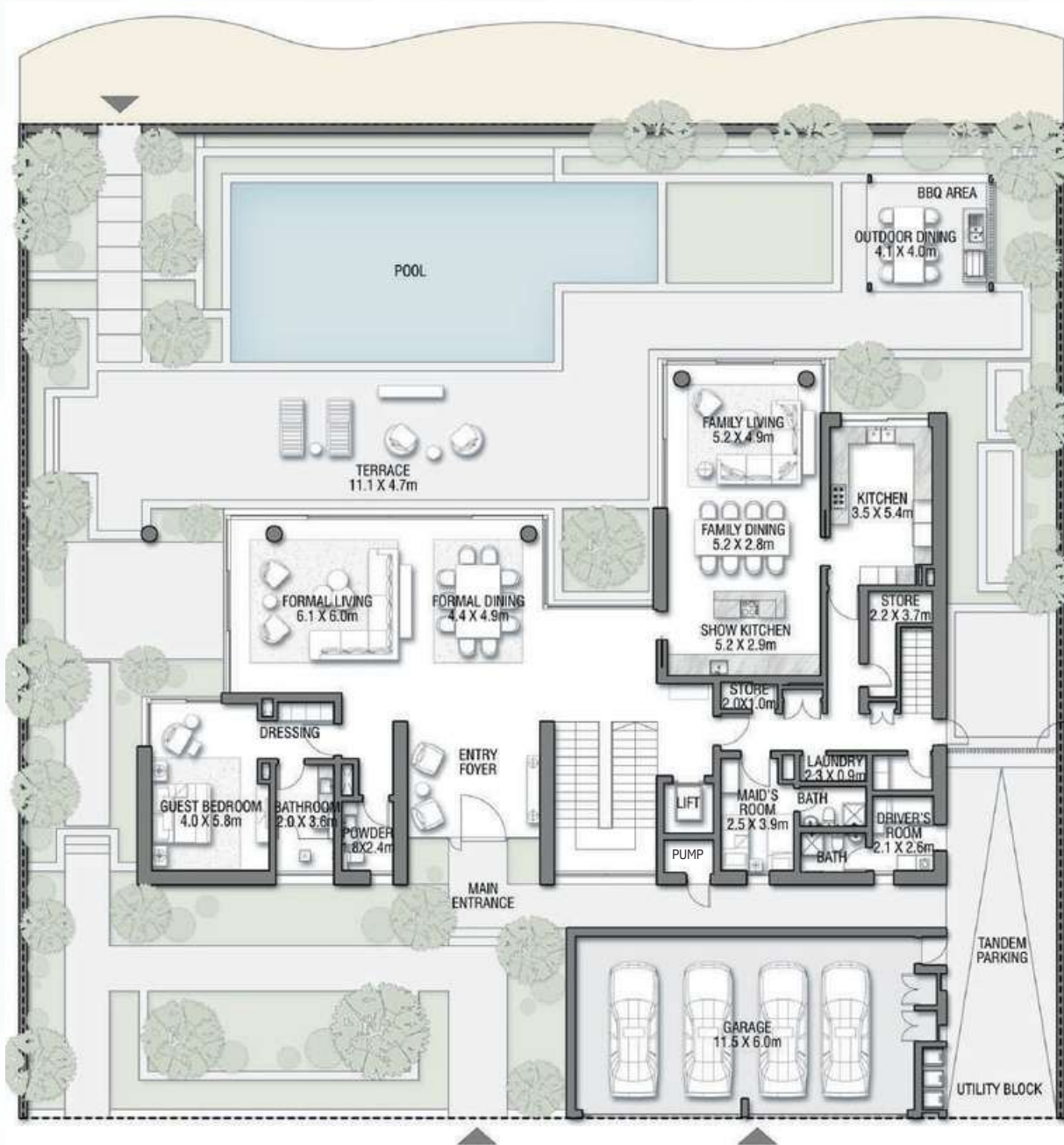


Street Side



Beach Side

Live in the Masterpiece



GROUND FLOOR



SECOND FLOOR



FIRST FLOOR

VILLA

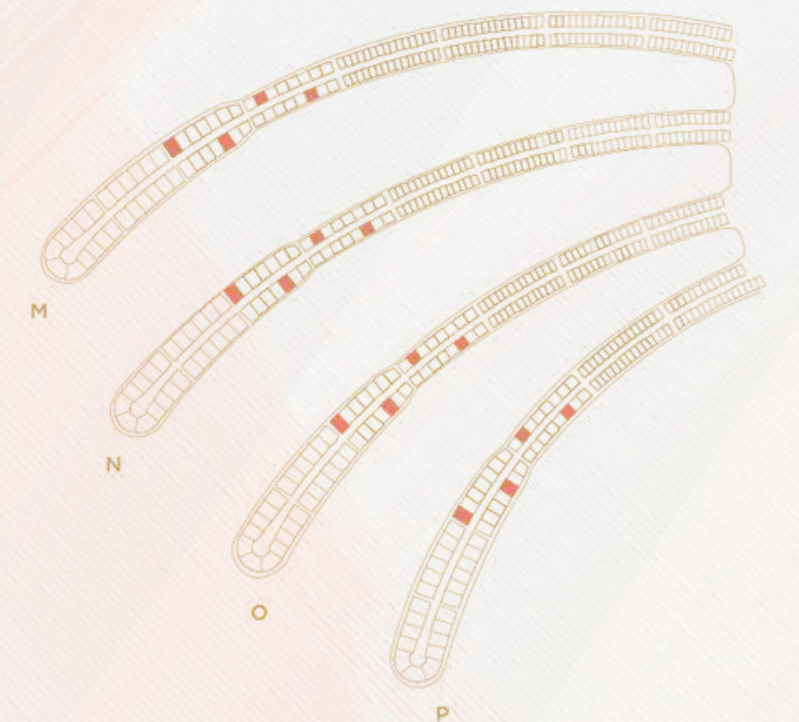
REDWOOD

Coral Villas Collection

G + 2

7 BEDROOMS + FORMAL AND FAMILY LOUNGES + ROOF LOUNGE AND TERRACE

FLOOR TYPE	SQ. M.	SQ. FT.
Ground Floor	343.78	3,700.42
Balcony / Terrace / Porch-GF	6.44	69.32
First Floor Area	373.82	4,023.76
Balcony / Terrace - First Floor	36.75	395.57
Second Floor Area	209.40	2,253.96
Balcony / Terrace - Second	78.29	842.71
Floor Garage - Covered	81.72	879.63
<b>TOTAL BUILT-UP AREA</b>	<b>1,130.20</b>	<b>12,165.37</b>
Garage with Pergola	0.0	0.0
<b>TOTAL AREA</b>	<b>1,130.20</b>	<b>12,165.37</b>



▲ Back to top

Numbers, square footage and floor plans are approximate. Final dimensions, square footage and floor plans may vary and are subject to change without notice. The developer reserves the right to make revisions. Built-Up Area is measured in accordance with Dubai Land Department standards. Plans, artistic renderings, landscaping and images are for illustrative purposes only and are subject to change without notice. Landscape shown is indicative and not provided by the developer. Pool layout and configuration shown on floor plans are for general illustrative purposes only and are not provided by the developer. The Bespoke Edition Option offered to the buyer at additional price will include a standard pool offering.

RUBY SUNSET



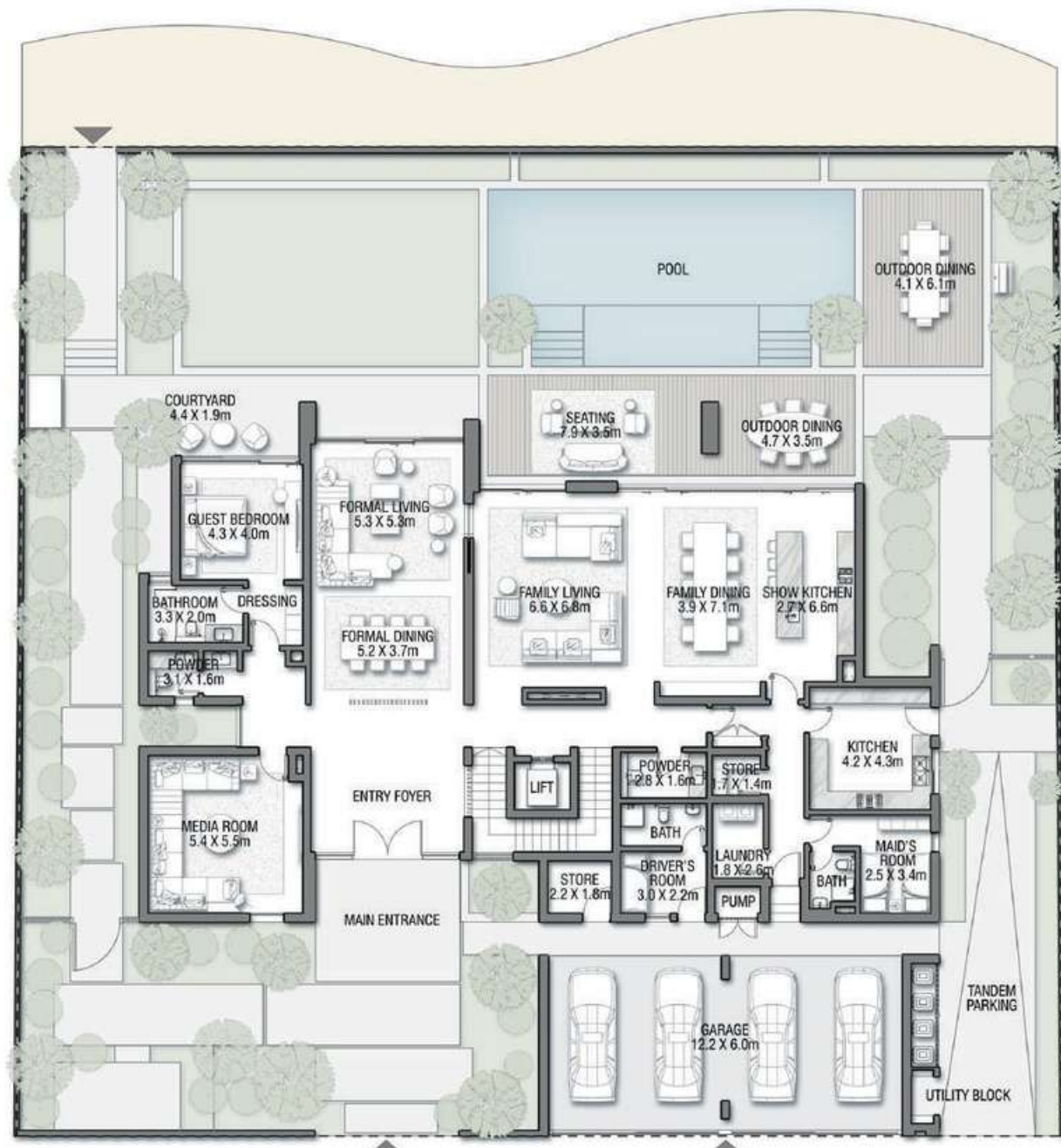
Street Side



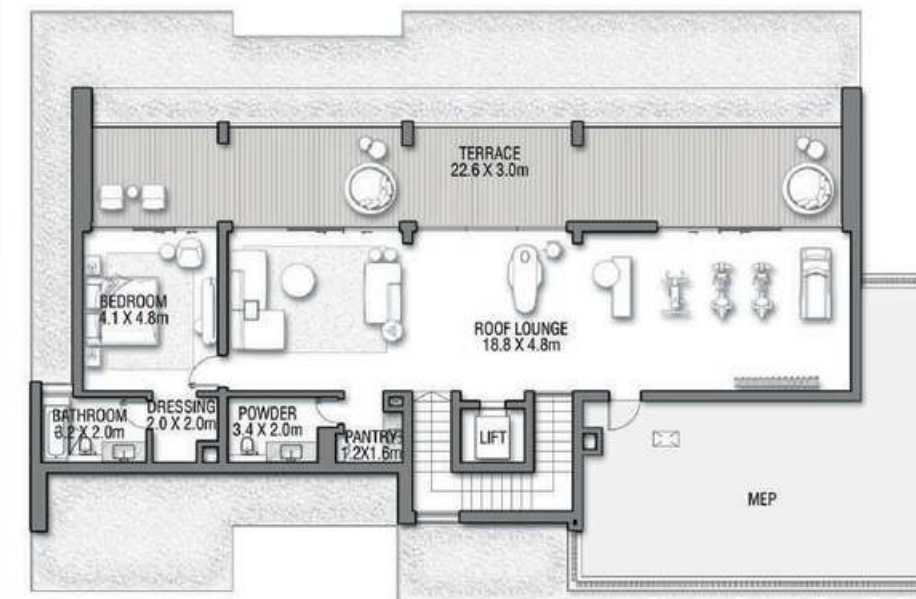
Beach Side



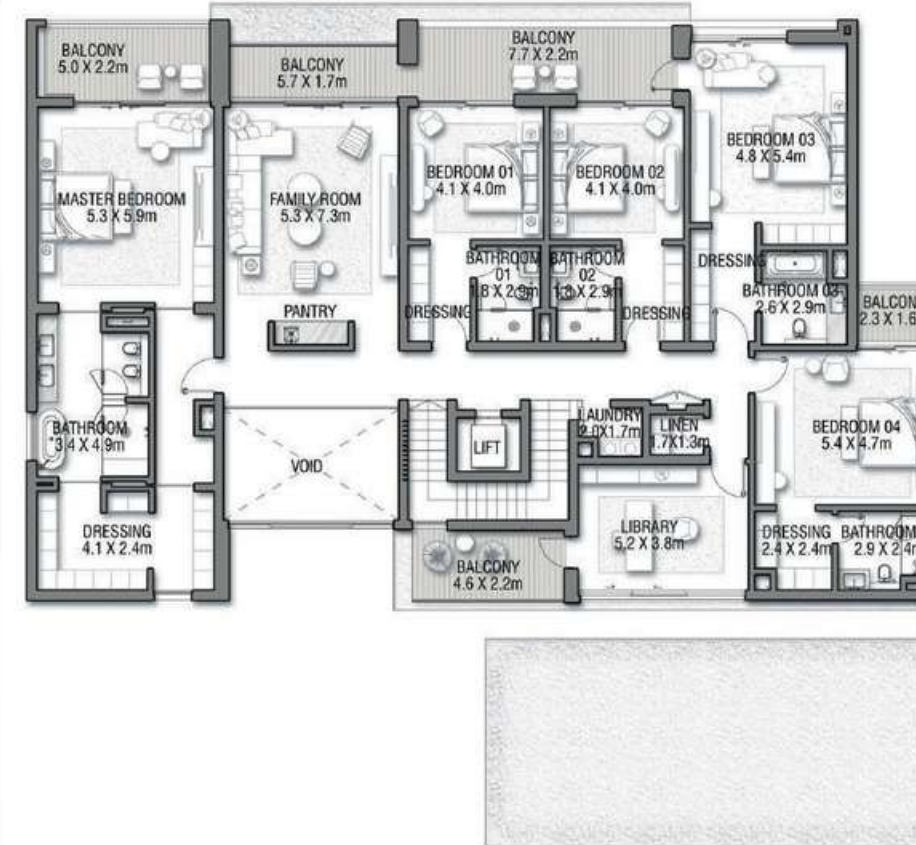
Live in the Masterpiece



GROUND FLOOR



SECOND FLOOR



FIRST FLOOR

VILLA

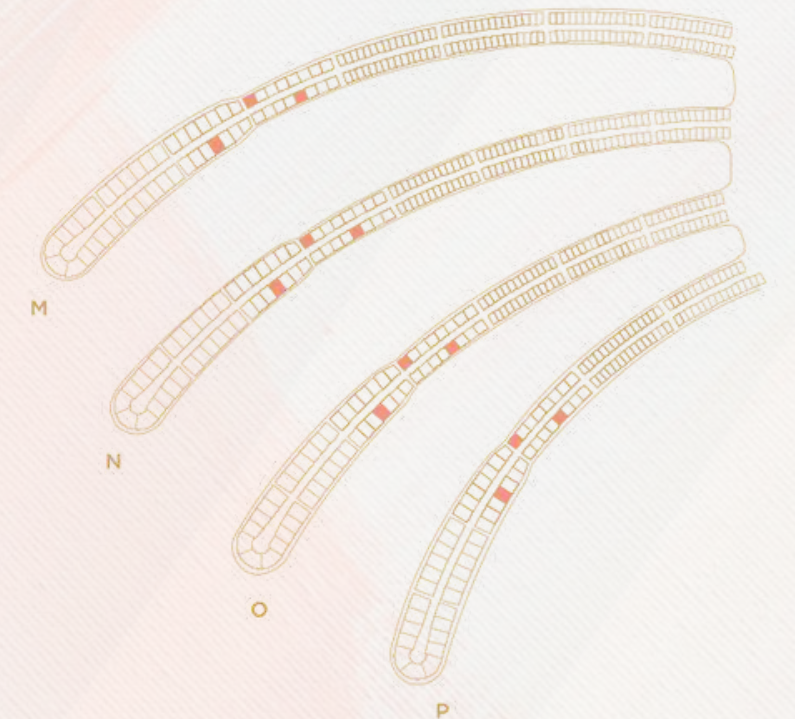
# RUBY SUNSET

Coral Villas Collection

G + 2

7 BEDROOMS + FORMAL AND FAMILY LOUNGES + LIBRARY + MEDIA ROOM + ROOF LOUNGE AND TERRACE

FLOOR TYPE	SQ. M.	SQ. FT.
Ground Floor	381.38	4,105.14
Balcony / Terrace / Porch-GF	1.38	14.85
First Floor Area	362.65	3,903.53
Balcony / Terrace - First Floor	60.00	645.83
Second Floor Area	166.90	1,796.50
Balcony / Terrace - Second	72.71	782.64
Floor Garage - Covered	84.26	906.97
<b>TOTAL BUILT-UP AREA</b>	<b>1,129.28</b>	<b>12,155.47</b>
Garage with Pergola	0.0	0.0
<b>TOTAL AREA</b>	<b>1,129.28</b>	<b>12,155.47</b>



▲ Back to top

Numbers, square footage and floor plans are approximate. Final dimensions, square footage and floor plans may vary and are subject to change without notice. The developer reserves the right to make revisions. Built-Up Area is measured in accordance with Dubai Land Department standards. Plans, artistic renderings, landscaping and images are for illustrative purposes only and are subject to change without notice. Landscape shown is indicative and not provided by the developer. Pool layout and configuration shown on floor plans are for general illustrative purposes only and are not provided by the developer. The Bespoke Edition Option offered to the buyer at additional price will include a standard pool offering.

Numbers, square footage and floor plans are approximate. Final dimensions, square footage and floor plans may vary and are subject to change without notice. The developer reserves the right to make revisions. Built-Up Area is measured in accordance with Dubai Land Department standards. Plans, artistic renderings, landscaping and images are for illustrative purposes only and are subject to change without notice. Landscape shown is indicative and not provided by the developer. Pool layout and configuration shown on floor plans are for general illustrative purposes only and are not provided by the developer. The Bespoke Edition Option offered to the buyer at additional price will include a standard pool offering.



# TOTALLY HOME

REAL ESTATE



[totallyhomerealestate](#)



[totallyhomerealestate](#)



[totallyhomerealestate](#)



[totallyhomerealestate.com](#)

---

+971 54 289 7686 [sales@totallyhomerealestate.com](mailto:sales@totallyhomerealestate.com)

[support@totallyhomerealestate.com](mailto:support@totallyhomerealestate.com) [admin@totallyhomerealestate.com](mailto:admin@totallyhomerealestate.com)

Office 103, Building 6 Bay Square Tower, Business Bay PO Box 418317, Dubai