

# BAYSHORE

AT CREEK BEACH

FLOOR PLANS

EMAAR

DUBAI CREEK  
HARBOUR

BAYSHORE AT  
CREEK BEACH

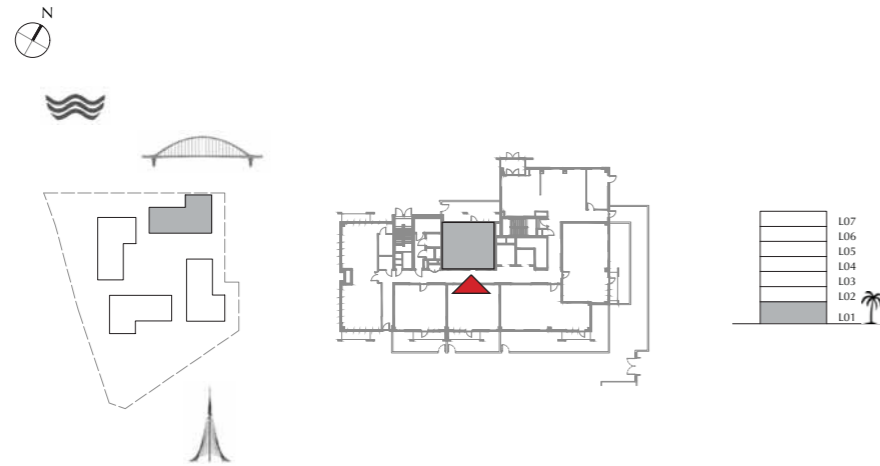
BUILDING 1

LEVEL 1

UNIT 101

1 BEDROOM

APARTMENT AREA	55.35 SQ.M.	595.78 SQ.FT.
BALCONY AREA	28.86 SQ.M.	310.65 SQ.FT.
TOTAL AREA	84.21 SQ.M.	906.43 SQ.FT.



FLOOR PLAN 1. All dimensions are in imperial and metric, and measured from finish to finish excluding construction tolerances. 2. All materials, dimensions, and drawings are approximate only. 3. Information is subject to change without notice, at developer's absolute discretion. 4. Actual area may vary from the stated area. 5. Drawings not to scale. 6. All images used are for illustrative purpose only and do not represent the actual size, features, specifications, fittings, and finishings. 7. The developer reserves the right to make revisions / alterations, at its absolute discretion, without any liability whatsoever.

DUBAI CREEK  
HARBOUR

BAYSHORE AT  
CREEK BEACH

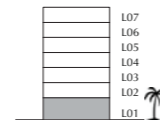
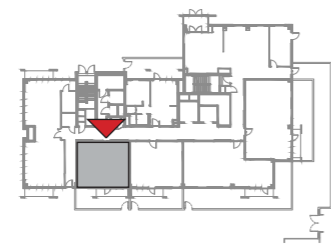
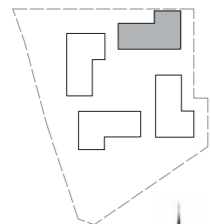
BUILDING 1

LEVEL 1

UNIT 102

1 BEDROOM

APARTMENT AREA	55.08 SQ.M.	592.88 SQ.FT.
BALCONY AREA	26.39 SQ.M.	284.06 SQ.FT.
TOTAL AREA	81.47 SQ.M.	876.94 SQ.FT.



FLOOR PLAN 1. All dimensions are in imperial and metric, and measured from finish to finish excluding construction tolerances. 2. All materials, dimensions, and drawings are approximate only. 3. Information is subject to change without notice, at developer's absolute discretion. 4. Actual area may vary from the stated area. 5. Drawings not to scale. 6. All images used are for illustrative purpose only and do not represent the actual size, features, specifications, fittings, and finishings. 7. The developer reserves the right to make revisions / alterations, at its absolute discretion, without any liability whatsoever.

DUBAI CREEK  
HARBOUR

BAYSHORE AT  
CREEK BEACH

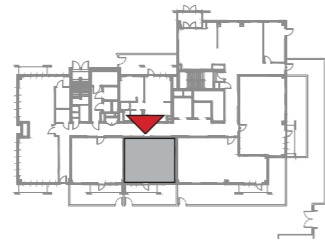
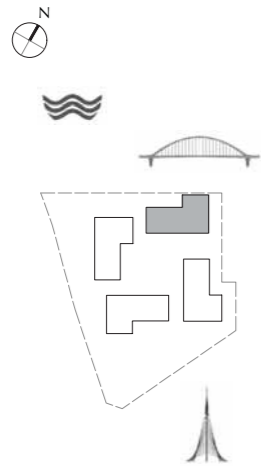
BUILDING 1

LEVEL 1

UNIT 103

1 BEDROOM

APARTMENT AREA	54.92 SQ.M.	591.15 SQ.FT.
BALCONY AREA	25.67 SQ.M.	276.31 SQ.FT.
TOTAL AREA	80.59 SQ.M.	867.46 SQ.FT.



FLOOR PLAN 1. All dimensions are in imperial and metric, and measured from finish to finish excluding construction tolerances. 2. All materials, dimensions, and drawings are approximate only. 3. Information is subject to change without notice, at developer's absolute discretion. 4. Actual area may vary from the stated area. 5. Drawings not to scale. 6. All images used are for illustrative purpose only and do not represent the actual size, features, specifications, fittings, and furnishings. 7. The developer reserves the right to make revisions / alterations, at its absolute discretion, without any liability whatsoever.

DUBAI CREEK  
HARBOUR

BAYSHORE AT  
CREEK BEACH

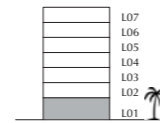
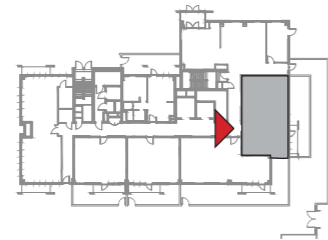
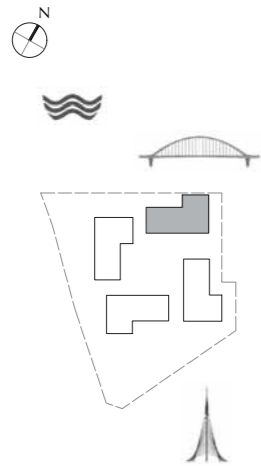
BUILDING 1

LEVEL 1

UNIT 105

2 BEDROOM

APARTMENT AREA	83.51 SQ.M.	898.89 SQ.FT.
BALCONY AREA	39.38 SQ.M.	423.88 SQ.FT.
TOTAL AREA	122.89 SQ.M.	1322.77 SQ.FT.



FLOOR PLAN 1. All dimensions are in imperial and metric, and measured from finish to finish excluding construction tolerances. 2. All materials, dimensions, and drawings are approximate only. 3. Information is subject to change without notice, at developer's absolute discretion. 4. Actual area may vary from the stated area. 5. Drawings not to scale. 6. All images used are for illustrative purpose only and do not represent the actual size, features, specifications, fittings, and finishings. 7. The developer reserves the right to make revisions / alterations, at its absolute discretion, without any liability whatsoever.

DUBAI CREEK  
HARBOUR

BAYSHORE AT  
CREEK BEACH

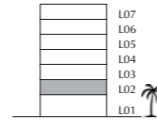
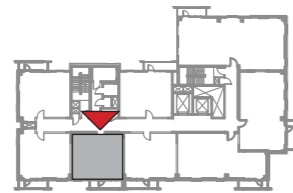
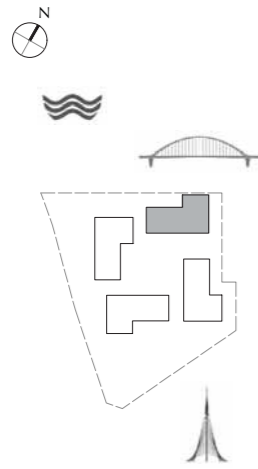
BUILDING 1

LEVEL 2

UNIT 204

1 BEDROOM

APARTMENT AREA	55.10 SQ.M.	593.09 SQ.FT.
BALCONY AREA	6.78 SQ.M.	72.98 SQ.FT.
TOTAL AREA	61.88 SQ.M.	666.07 SQ.FT.



FLOOR PLAN 1. All dimensions are in imperial and metric, and measured from finish to finish excluding construction tolerances. 2. All materials, dimensions, and drawings are approximate only. 3. Information is subject to change without notice, at developer's absolute discretion. 4. Actual area may vary from the stated area. 5. Drawings not to scale. 6. All images used are for illustrative purpose only and do not represent the actual size, features, specifications, fittings, and finishings. 7. The developer reserves the right to make revisions / alterations, at its absolute discretion, without any liability whatsoever.

DUBAI CREEK  
HARBOUR

BAYSHORE AT  
CREEK BEACH

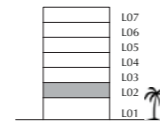
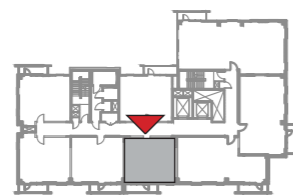
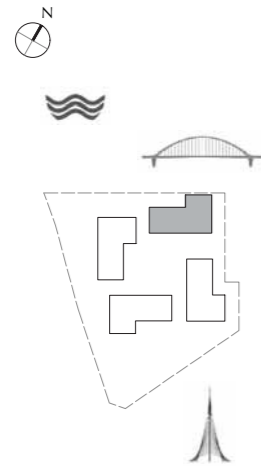
BUILDING 1

LEVEL 2

UNIT 205

1 BEDROOM

APARTMENT AREA	54.95 SQ.M.	591.48 SQ.FT.
BALCONY AREA	6.78 SQ.M.	72.98 SQ.FT.
TOTAL AREA	61.73 SQ.M.	664.46 SQ.FT.



FLOOR PLAN 1. All dimensions are in imperial and metric, and measured from finish to finish excluding construction tolerances. 2.All materials, dimensions, and drawings are approximate only. 3. Information is subject to change without notice, at developer's absolute discretion. 4. Actual area may vary from the stated area. 5. Drawings not to scale. 6. All images used are for illustrative purpose only and do not represent the actual size, features, specifications, fittings, and finishings. 7. The developer reserves the right to make revisions / alterations, at it's a absolute discretion, without any liability whatsoever.

DUBAI CREEK  
HARBOUR

BAYSHORE AT  
CREEK BEACH

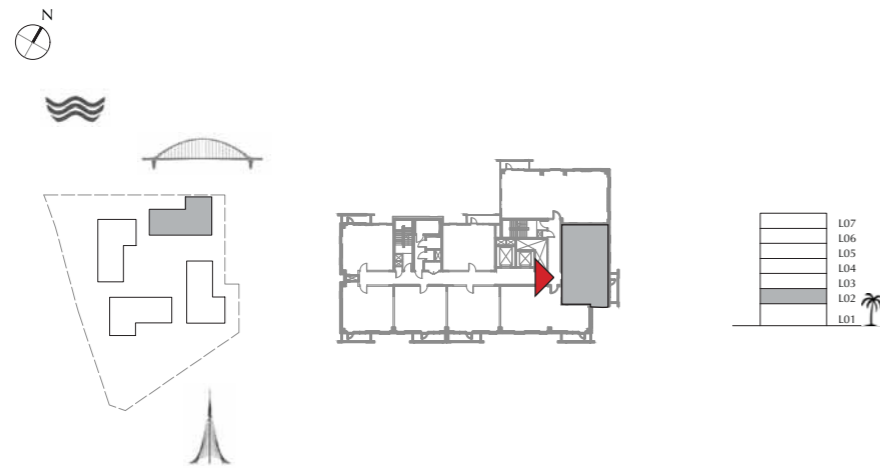
BUILDING 1

LEVEL 2

UNIT 207

2 BEDROOM

APARTMENT AREA	83.57 SQ.M.	899.54 SQ.FT.
BALCONY AREA	6.01 SQ.M.	64.69 SQ.FT.
TOTAL AREA	89.58 SQ.M.	964.23 SQ.FT.



FLOOR PLAN 1. All dimensions are in imperial and metric, and measured from finish to finish excluding construction tolerances. 2. All materials, dimensions, and drawings are approximate only. 3. Information is subject to change without notice, at developer's absolute discretion. 4. Actual area may vary from the stated area. 5. Drawings not to scale. 6. All images used are for illustrative purpose only and do not represent the actual size, features, specifications, fittings, and finishings. 7. The developer reserves the right to make revisions / alterations, at its absolute discretion, without any liability whatsoever.



DUBAI CREEK  
HARBOUR

BAYSHORE AT  
CREEK BEACH

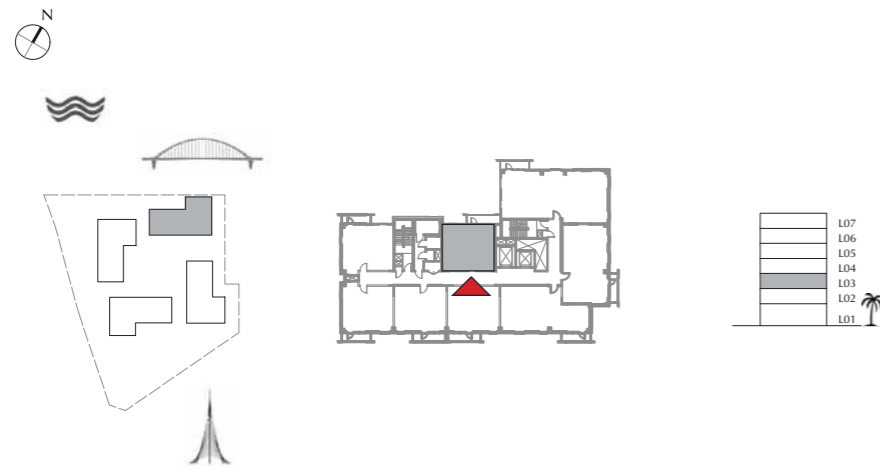
BUILDING 1

LEVEL 3

UNIT 301

1 BEDROOM

APARTMENT AREA	55.35 SQ.M.	595.78 SQ.FT.
BALCONY AREA	7.07 SQ.M.	76.10 SQ.FT.
TOTAL AREA	62.42 SQ.M.	671.88 SQ.FT.



FLOOR PLAN 1. All dimensions are in imperial and metric, and measured from finish to finish excluding construction tolerances. 2. All materials, dimensions, and drawings are approximate only. 3. Information is subject to change without notice, at developer's absolute discretion. 4. Actual area may vary from the stated area. 5. Drawings not to scale. 6. All images used are for illustrative purpose only and do not represent the actual size, features, specifications, fittings, and finishings. 7. The developer reserves the right to make revisions / alterations, at its absolute discretion, without any liability whatsoever.

DUBAI CREEK  
HARBOUR

BAYSHORE AT  
CREEK BEACH

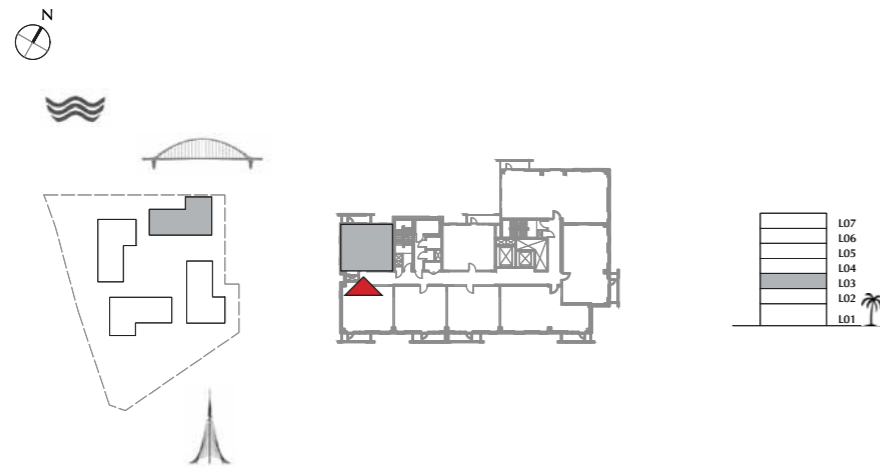
BUILDING 1

LEVEL 3

UNIT 302

1 BEDROOM

APARTMENT AREA	56.77 SQ.M.	611.07 SQ.FT.
BALCONY AREA	6.01 SQ.M.	64.69 SQ.FT.
TOTAL AREA	62.78 SQ.M.	675.76 SQ.FT.



FLOOR PLAN 1. All dimensions are in imperial and metric, and measured from finish to finish excluding construction tolerances. 2. All materials, dimensions, and drawings are approximate only. 3. Information is subject to change without notice, at developer's absolute discretion. 4. Actual area may vary from the stated area. 5. Drawings not to scale. 6. All images used are for illustrative purpose only and do not represent the actual size, features, specifications, fittings, and finishings. 7. The developer reserves the right to make revisions / alterations, at it's a absolute discretion, without any liability whatsoever.

DUBAI CREEK  
HARBOUR

BAYSHORE AT  
CREEK BEACH

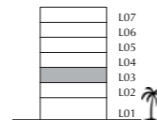
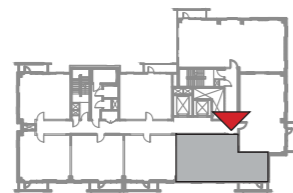
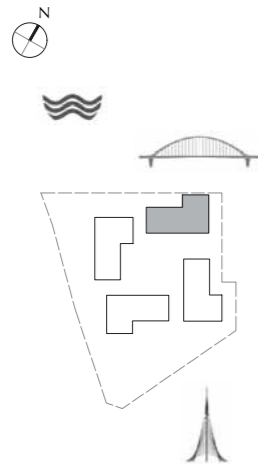
BUILDING 1

LEVEL 3

UNIT 306

2 BEDROOM

APARTMENT AREA	82.60 SQ.M.	889.10 SQ.FT.
BALCONY AREA	6.01 SQ.M.	64.69 SQ.FT.
TOTAL AREA	88.61 SQ.M.	953.79 SQ.FT.



FLOOR PLAN 1. All dimensions are in imperial and metric, and measured from finish to finish excluding construction tolerances. 2.All materials, dimensions, and drawings are approximate only. 3. Information is subject to change without notice, at developer's absolute discretion. 4. Actual area may vary from the stated area. 5. Drawings not to scale. 6. All images used are for illustrative purpose only and do not represent the actual size, features, specifications, fittings, and finishings. 7. The developer reserves the right to make revisions / alterations, at it's a absolute discretion, without any liability whatsoever.

DUBAI CREEK  
HARBOUR

BAYSHORE AT  
CREEK BEACH

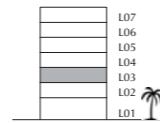
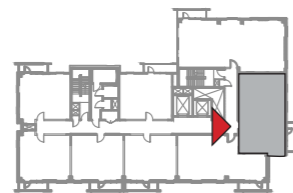
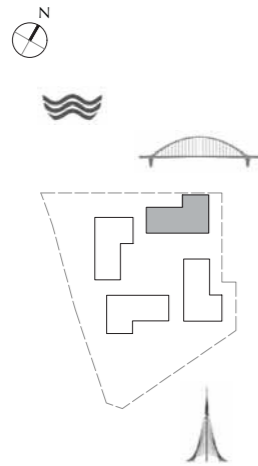
BUILDING 1

LEVEL 3

UNIT 307

2 BEDROOM

APARTMENT AREA	83.57 SQ.M.	899.54 SQ.FT.
BALCONY AREA	6.01 SQ.M.	64.69 SQ.FT.
TOTAL AREA	89.58 SQ.M.	964.23 SQ.FT.



FLOOR PLAN 1. All dimensions are in imperial and metric, and measured from finish to finish excluding construction tolerances. 2.All materials, dimensions, and drawings are approximate only. 3. Information is subject to change without notice, at developer's absolute discretion. 4. Actual area may vary from the stated area. 5. Drawings not to scale. 6. All images used are for illustrative purpose only and do not represent the actual size, features, specifications, fittings, and finishings. 7. The developer reserves the right to make revisions / alterations, at its absolute discretion, without any liability whatsoever.

DUBAI CREEK  
HARBOUR

BAYSHORE AT  
CREEK BEACH

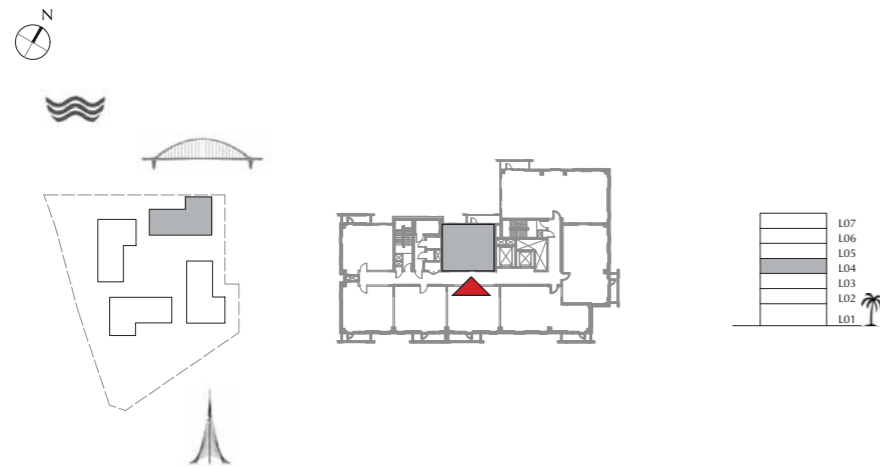
BUILDING 1

LEVEL 4

UNIT 401

1 BEDROOM

APARTMENT AREA	55.35 SQ.M.	595.78 SQ.FT.
BALCONY AREA	7.07 SQ.M.	76.10 SQ.FT.
TOTAL AREA	62.42 SQ.M.	671.88 SQ.FT.



FLOOR PLAN 1. All dimensions are in imperial and metric, and measured from finish to finish excluding construction tolerances. 2. All materials, dimensions, and drawings are approximate only. 3. Information is subject to change without notice, at developer's absolute discretion. 4. Actual area may vary from the stated area. 5. Drawings not to scale. 6. All images used are for illustrative purpose only and do not represent the actual size, features, specifications, fittings, and finishings. 7. The developer reserves the right to make revisions / alterations, at its absolute discretion, without any liability whatsoever.

DUBAI CREEK  
HARBOUR

BAYSHORE AT  
CREEK BEACH

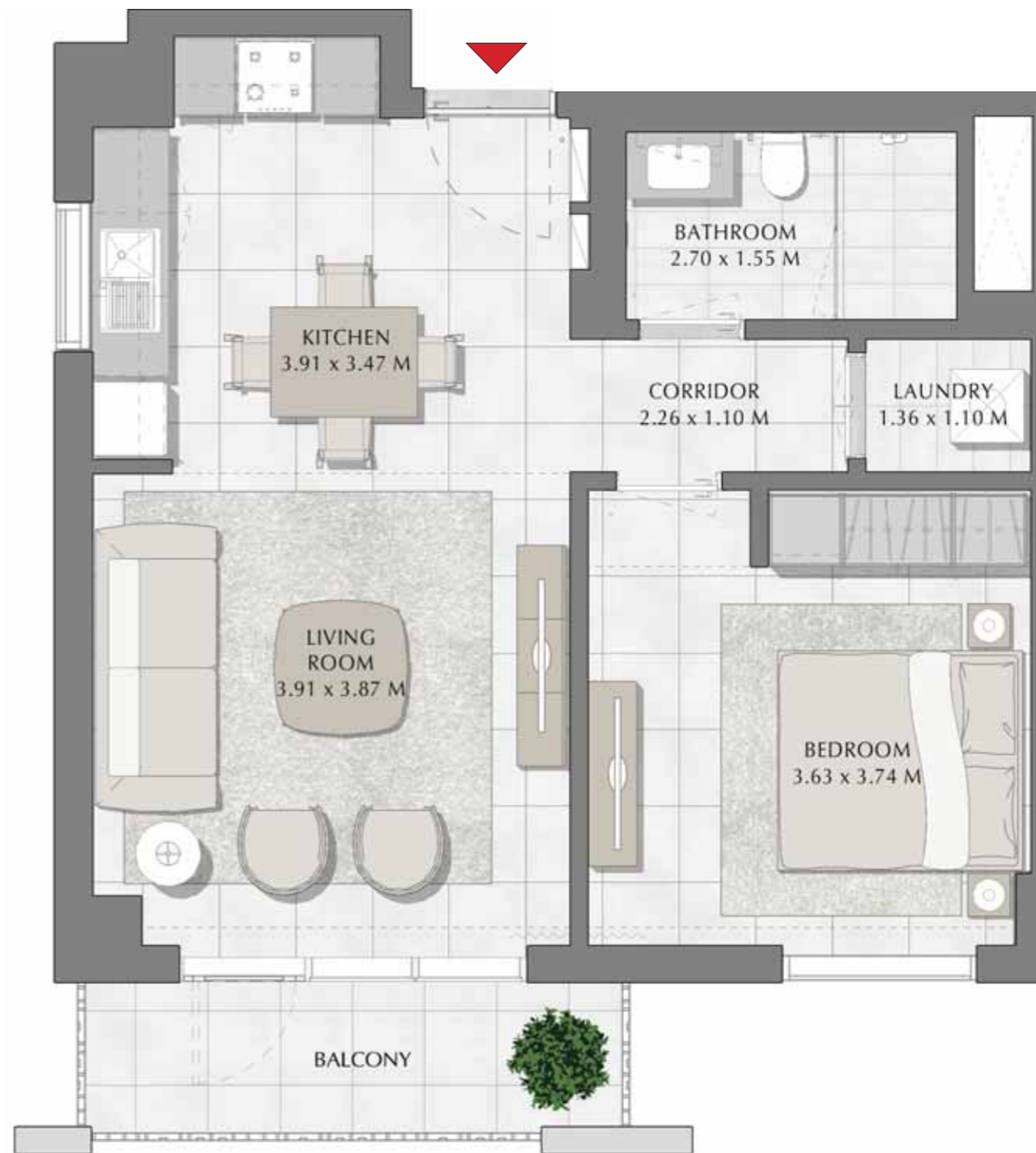
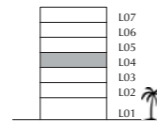
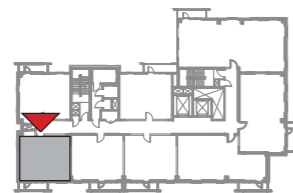
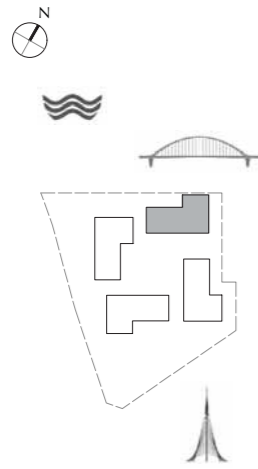
BUILDING 1

LEVEL 4

UNIT 403

1 BEDROOM

APARTMENT AREA	56.60 SQ.M.	609.24 SQ.FT.
BALCONY AREA	6.01 SQ.M.	64.69 SQ.FT.
TOTAL AREA	62.61 SQ.M.	673.93 SQ.FT.



FLOOR PLAN 1. All dimensions are in imperial and metric, and measured from finish to finish excluding construction tolerances. 2.All materials, dimensions, and drawings are approximate only. 3. Information is subject to change without notice, at developer's absolute discretion. 4. Actual area may vary from the stated area. 5. Drawings not to scale. 6. All images used are for illustrative purpose only and do not represent the actual size, features, specifications, fittings, and finishings. 7. The developer reserves the right to make revisions / alterations, at it's a absolute discretion, without any liability whatsoever.

DUBAI CREEK  
HARBOUR

BAYSHORE AT  
CREEK BEACH

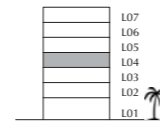
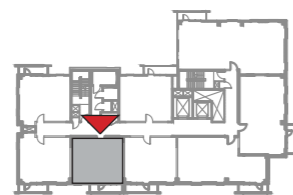
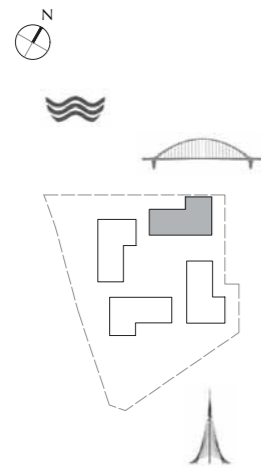
BUILDING 1

LEVEL 4

UNIT 404

1 BEDROOM

APARTMENT AREA	55.10 SQ.M.	593.09 SQ.FT.
BALCONY AREA	6.78 SQ.M.	72.98 SQ.FT.
TOTAL AREA	61.88 SQ.M.	666.07 SQ.FT.



FLOOR PLAN 1. All dimensions are in imperial and metric, and measured from finish to finish excluding construction tolerances. 2.All materials, dimensions, and drawings are approximate only. 3. Information is subject to change without notice, at developer's absolute discretion. 4. Actual area may vary from the stated area. 5. Drawings not to scale. 6. All images used are for illustrative purpose only and do not represent the actual size, features, specifications, fittings, and finishings. 7. The developer reserves the right to make revisions / alterations, at its absolute discretion, without any liability whatsoever.

DUBAI CREEK  
HARBOUR

BAYSHORE AT  
CREEK BEACH

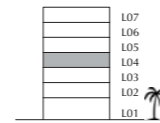
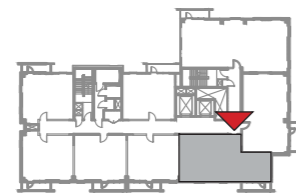
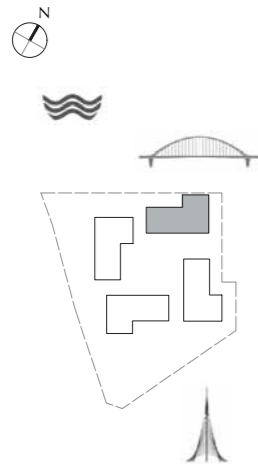
BUILDING 1

LEVEL 4

UNIT 406

2 BEDROOM

APARTMENT AREA	82.73 SQ.M.	890.50 SQ.FT.
BALCONY AREA	6.01 SQ.M.	64.69 SQ.FT.
TOTAL AREA	88.74 SQ.M.	955.19 SQ.FT.



FLOOR PLAN 1. All dimensions are in imperial and metric, and measured from finish to finish excluding construction tolerances. 2. All materials, dimensions, and drawings are approximate only. 3. Information is subject to change without notice, at developer's absolute discretion. 4. Actual area may vary from the stated area. 5. Drawings not to scale. 6. All images used are for illustrative purpose only and do not represent the actual size, features, specifications, fittings, and finishings. 7. The developer reserves the right to make revisions / alterations, at its absolute discretion, without any liability whatsoever.



DUBAI CREEK  
HARBOUR

BAYSHORE AT  
CREEK BEACH

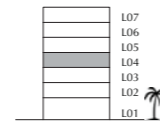
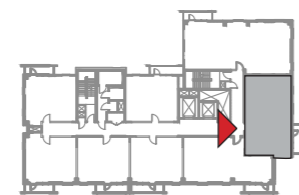
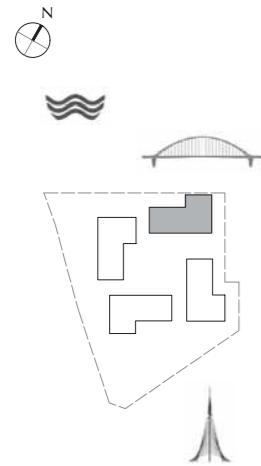
BUILDING 1

LEVEL 4

UNIT 407

2 BEDROOM

APARTMENT AREA	83.57 SQ.M.	899.54 SQ.FT.
BALCONY AREA	6.01 SQ.M.	64.69 SQ.FT.
TOTAL AREA	89.58 SQ.M.	964.23 SQ.FT.



FLOOR PLAN 1. All dimensions are in imperial and metric, and measured from finish to finish excluding construction tolerances. 2. All materials, dimensions, and drawings are approximate only. 3. Information is subject to change without notice, at developer's absolute discretion. 4. Actual area may vary from the stated area. 5. Drawings not to scale. 6. All images used are for illustrative purpose only and do not represent the actual size, features, specifications, fittings, and finishings. 7. The developer reserves the right to make revisions / alterations, at its absolute discretion, without any liability whatsoever.

DUBAI CREEK  
HARBOUR

BAYSHORE AT  
CREEK BEACH

BUILDING 1

LEVEL 5

UNIT 502

1 BEDROOM

APARTMENT AREA	56.77 SQ.M.	611.07 SQ.FT.
BALCONY AREA	6.01 SQ.M.	64.69 SQ.FT.
TOTAL AREA	62.78 SQ.M.	675.76 SQ.FT.



FLOOR PLAN 1. All dimensions are in imperial and metric, and measured from finish to finish excluding construction tolerances. 2. All materials, dimensions, and drawings are approximate only. 3. Information is subject to change without notice, at developer's absolute discretion. 4. Actual area may vary from the stated area. 5. Drawings not to scale. 6. All images used are for illustrative purpose only and do not represent the actual size, features, specifications, fittings, and finishings. 7. The developer reserves the right to make revisions / alterations, at its absolute discretion, without any liability whatsoever.

DUBAI CREEK  
HARBOUR

BAYSHORE AT  
CREEK BEACH

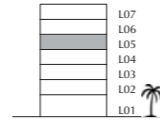
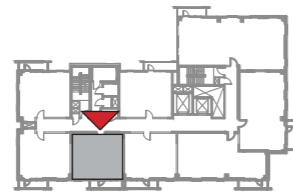
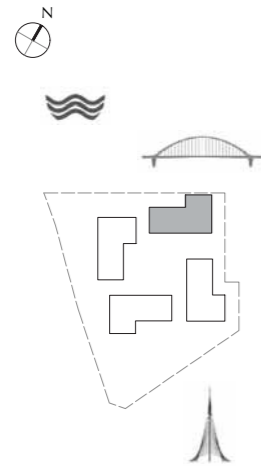
BUILDING 1

LEVEL 5

UNIT 504

1 BEDROOM

APARTMENT AREA	55.10 SQ.M.	593.09 SQ.FT.
BALCONY AREA	6.78 SQ.M.	72.98 SQ.FT.
TOTAL AREA	61.88 SQ.M.	666.07 SQ.FT.



FLOOR PLAN 1. All dimensions are in imperial and metric, and measured from finish to finish excluding construction tolerances. 2.All materials, dimensions, and drawings are approximate only. 3. Information is subject to change without notice, at developer's absolute discretion. 4. Actual area may vary from the stated area. 5. Drawings not to scale. 6. All images used are for illustrative purpose only and do not represent the actual size, features, specifications, fittings, and finishings. 7. The developer reserves the right to make revisions / alterations, at its absolute discretion, without any liability whatsoever.

DUBAI CREEK  
HARBOUR

BAYSHORE AT  
CREEK BEACH

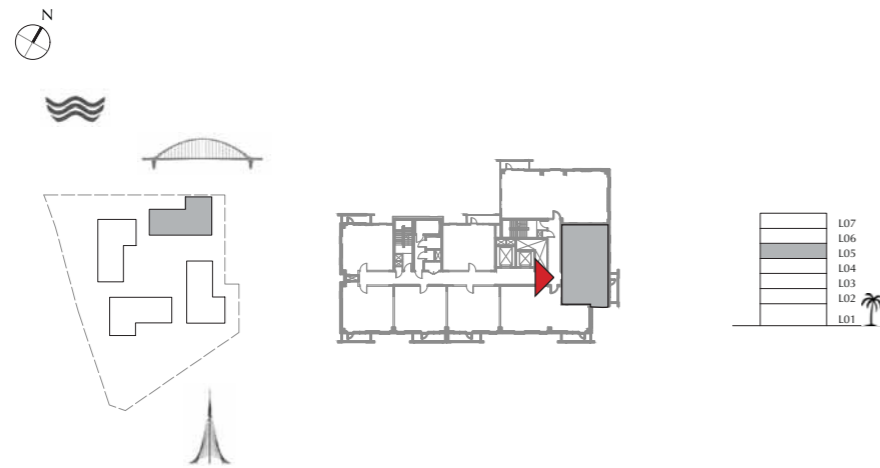
BUILDING 1

LEVEL 5

UNIT 507

2 BEDROOM

APARTMENT AREA	83.51 SQ.M.	898.89 SQ.FT.
BALCONY AREA	6.01 SQ.M.	64.69 SQ.FT.
TOTAL AREA	89.52 SQ.M.	963.58 SQ.FT.



FLOOR PLAN 1. All dimensions are in imperial and metric, and measured from finish to finish excluding construction tolerances. 2. All materials, dimensions, and drawings are approximate only. 3. Information is subject to change without notice, at developer's absolute discretion. 4. Actual area may vary from the stated area. 5. Drawings not to scale. 6. All images used are for illustrative purpose only and do not represent the actual size, features, specifications, fittings, and finishings. 7. The developer reserves the right to make revisions / alterations, at its absolute discretion, without any liability whatsoever.

DUBAI CREEK  
HARBOUR

BAYSHORE AT  
CREEK BEACH

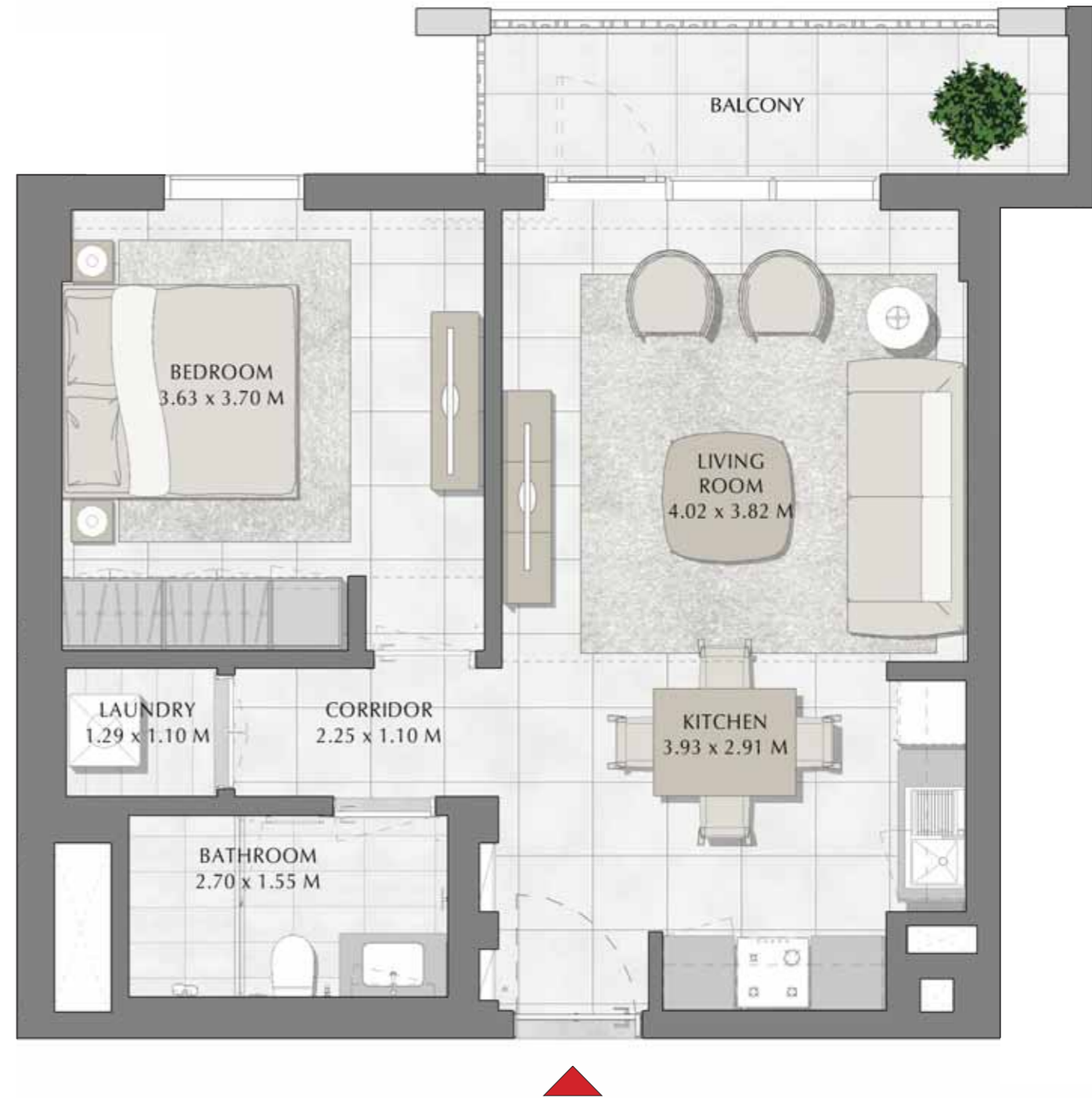
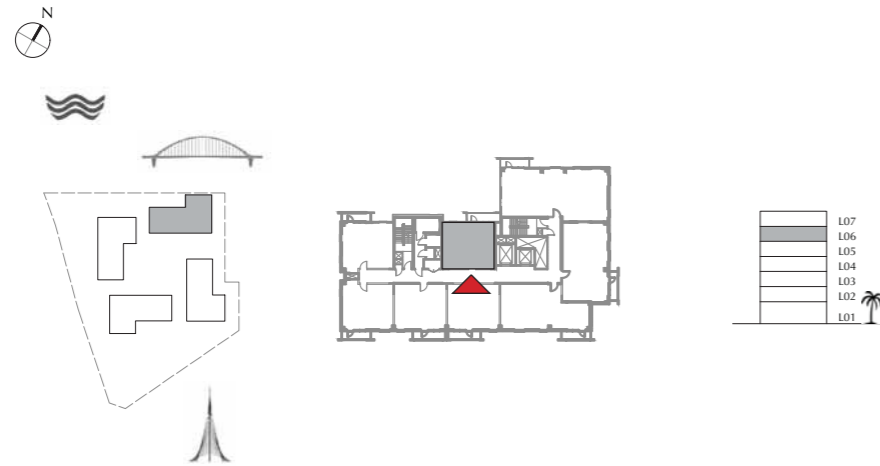
BUILDING 1

LEVEL 6

UNIT 601

1 BEDROOM

APARTMENT AREA	55.35 SQ.M.	595.78 SQ.FT.
BALCONY AREA	7.07 SQ.M.	76.10 SQ.FT.
TOTAL AREA	62.42 SQ.M.	671.88 SQ.FT.



FLOOR PLAN 1. All dimensions are in imperial and metric, and measured from finish to finish excluding construction tolerances. 2. All materials, dimensions, and drawings are approximate only. 3. Information is subject to change without notice, at developer's absolute discretion. 4. Actual area may vary from the stated area. 5. Drawings not to scale. 6. All images used are for illustrative purpose only and do not represent the actual size, features, specifications, fittings, and finishings. 7. The developer reserves the right to make revisions / alterations, at its absolute discretion, without any liability whatsoever.

DUBAI CREEK  
HARBOUR

BAYSHORE AT  
CREEK BEACH

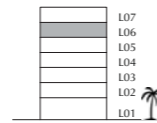
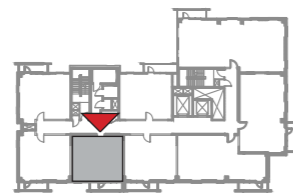
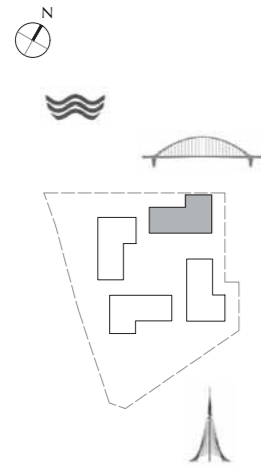
BUILDING 1

LEVEL 6

UNIT 604

1 BEDROOM

APARTMENT AREA	55.10 SQ.M.	593.09 SQ.FT.
BALCONY AREA	6.78 SQ.M.	72.98 SQ.FT.
TOTAL AREA	61.88 SQ.M.	666.07 SQ.FT.



FLOOR PLAN 1. All dimensions are in imperial and metric, and measured from finish to finish excluding construction tolerances. 2.All materials, dimensions, and drawings are approximate only. 3. Information is subject to change without notice, at developer's absolute discretion. 4. Actual area may vary from the stated area. 5. Drawings not to scale. 6. All images used are for illustrative purpose only and do not represent the actual size, features, specifications, fittings, and finishings. 7. The developer reserves the right to make revisions / alterations, at its absolute discretion, without any liability whatsoever.

DUBAI CREEK  
HARBOUR

BAYSHORE AT  
CREEK BEACH

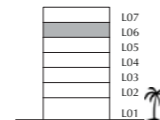
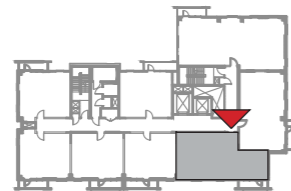
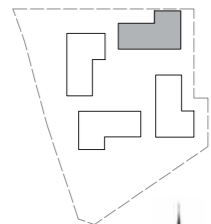
BUILDING 1

LEVEL 6

UNIT 606

2 BEDROOM

APARTMENT AREA	82.60 SQ.M.	889.10 SQ.FT.
BALCONY AREA	6.01 SQ.M.	64.69 SQ.FT.
TOTAL AREA	88.61 SQ.M.	953.79 SQ.FT.



FLOOR PLAN 1. All dimensions are in imperial and metric, and measured from finish to finish excluding construction tolerances. 2. All materials, dimensions, and drawings are approximate only. 3. Information is subject to change without notice, at developer's absolute discretion. 4. Actual area may vary from the stated area. 5. Drawings not to scale. 6. All images used are for illustrative purpose only and do not represent the actual size, features, specifications, fittings, and finishings. 7. The developer reserves the right to make revisions / alterations, at its absolute discretion, without any liability whatsoever.

DUBAI CREEK  
HARBOUR

BAYSHORE AT  
CREEK BEACH

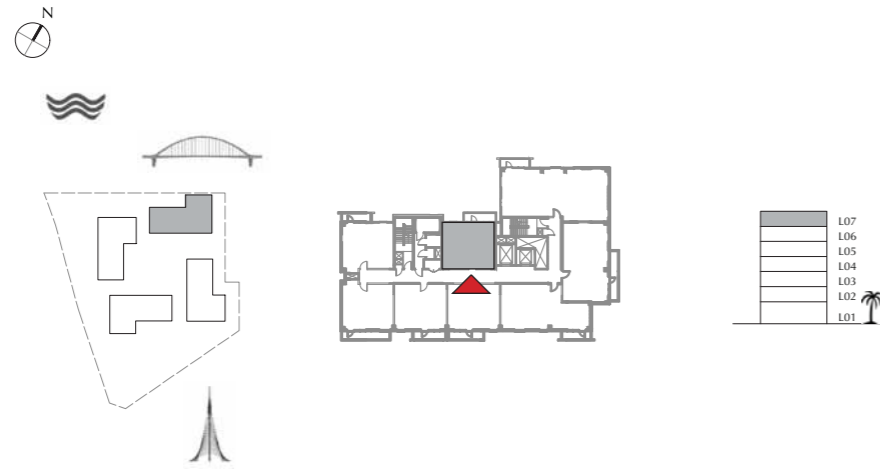
BUILDING 1

LEVEL 7

UNIT 701

1 BEDROOM

APARTMENT AREA	55.35 SQ.M.	595.78 SQ.FT.
BALCONY AREA	6.59 SQ.M.	70.93 SQ.FT.
TOTAL AREA	61.94 SQ.M.	666.71 SQ.FT.



FLOOR PLAN 1. All dimensions are in imperial and metric, and measured from finish to finish excluding construction tolerances. 2. All materials, dimensions, and drawings are approximate only. 3. Information is subject to change without notice, at developer's absolute discretion. 4. Actual area may vary from the stated area. 5. Drawings not to scale. 6. All images used are for illustrative purpose only and do not represent the actual size, features, specifications, fittings, and finishings. 7. The developer reserves the right to make revisions / alterations, at its absolute discretion, without any liability whatsoever.



DUBAI CREEK  
HARBOUR

BAYSHORE AT  
CREEK BEACH

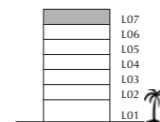
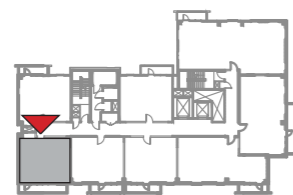
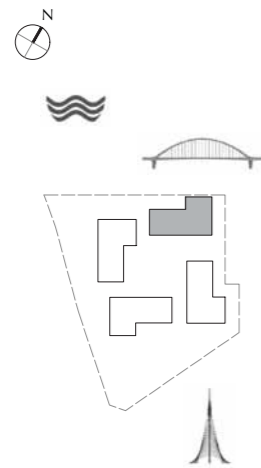
BUILDING 1

LEVEL 7

UNIT 703

1 BEDROOM

APARTMENT AREA	56.60 SQ.M.	609.24 SQ.FT.
BALCONY AREA	9.90 SQ.M.	106.56 SQ.FT.
TOTAL AREA	66.50 SQ.M.	715.80 SQ.FT.



FLOOR PLAN 1. All dimensions are in imperial and metric, and measured from finish to finish excluding construction tolerances. 2. All materials, dimensions, and drawings are approximate only. 3. Information is subject to change without notice, at developer's absolute discretion. 4. Actual area may vary from the stated area. 5. Drawings not to scale. 6. All images used are for illustrative purpose only and do not represent the actual size, features, specifications, fittings, and finishings. 7. The developer reserves the right to make revisions / alterations, at its absolute discretion, without any liability whatsoever.

DUBAI CREEK  
HARBOUR

BAYSHORE AT  
CREEK BEACH

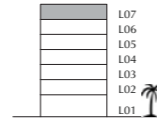
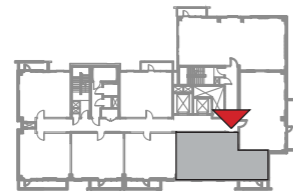
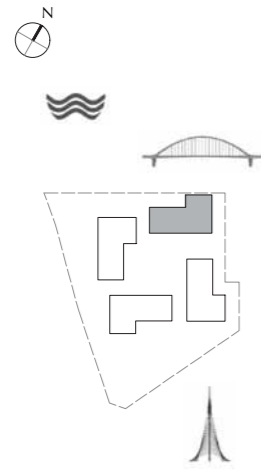
BUILDING 1

LEVEL 7

UNIT 706

2 BEDROOM

APARTMENT AREA	82.60 SQ.M.	889.10 SQ.FT.
BALCONY AREA	6.01 SQ.M.	64.69 SQ.FT.
TOTAL AREA	88.61 SQ.M.	953.79 SQ.FT.



FLOOR PLAN 1. All dimensions are in imperial and metric, and measured from finish to finish excluding construction tolerances. 2.All materials, dimensions, and drawings are approximate only. 3. Information is subject to change without notice, at developer's absolute discretion. 4. Actual area may vary from the stated area. 5. Drawings not to scale. 6. All images used are for illustrative purpose only and do not represent the actual size, features, specifications, fittings, and finishings. 7. The developer reserves the right to make revisions / alterations, at its absolute discretion, without any liability whatsoever.

DUBAI CREEK  
HARBOUR

BAYSHORE AT  
CREEK BEACH

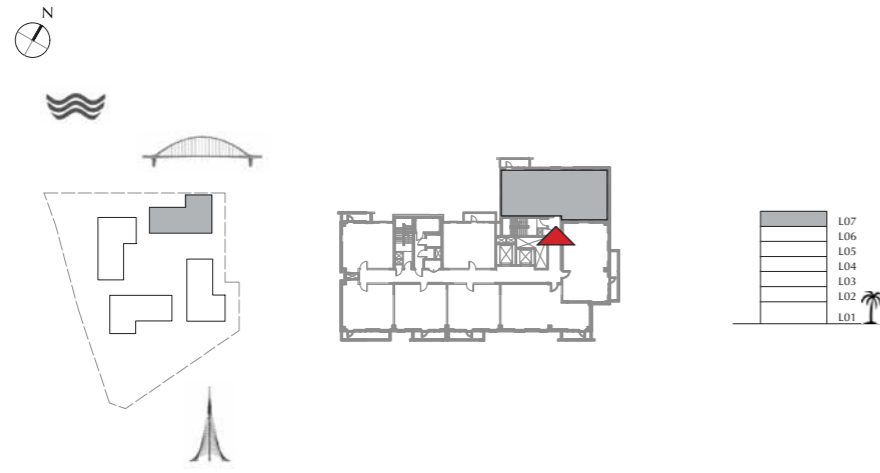
BUILDING 1

LEVEL 7

UNIT 708

3 BEDROOM

APARTMENT AREA	123.62 SQ.M.	1330.63 SQ.FT.
BALCONY AREA	6.01 SQ.M.	64.69 SQ.FT.
TOTAL AREA	129.63 SQ.M.	1395.32 SQ.FT.



FLOOR PLAN 1. All dimensions are in imperial and metric, and measured from finish to finish excluding construction tolerances. 2.All materials, dimensions, and drawings are approximate only. 3. Information is subject to change without notice, at developer's absolute discretion. 4. Actual area may vary from the stated area. 5. Drawings not to scale. 6. All images used are for illustrative purpose only and do not represent the actual size, features, specifications, fittings, and furnishings. 7. The developer reserves the right to make revisions / alterations, at it's a absolute discretion, without any liability whatsoever.

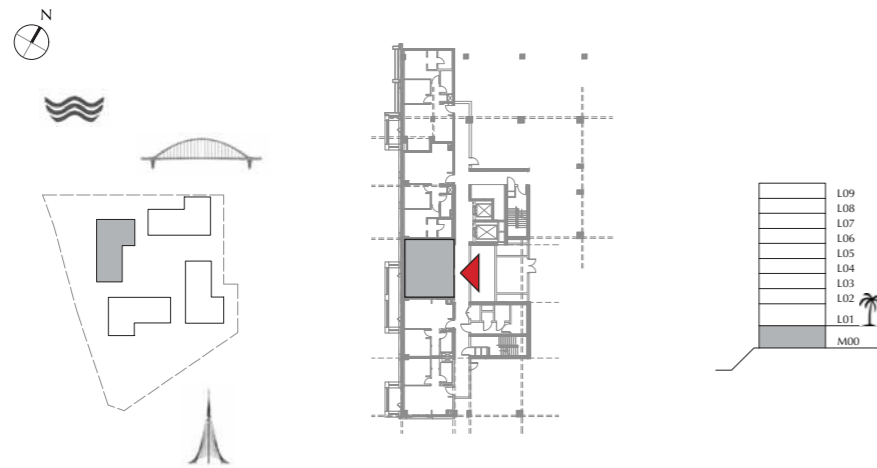
DUBAI CREEK  
HARBOUR

BAYSHORE AT  
CREEK BEACH

BUILDING 2  
MEZZANINE LEVEL  
UNIT M03

1 BEDROOM

APARTMENT AREA	54.96 SQ.M.	591.58 SQ.FT.
BALCONY AREA	8.40 SQ.M.	90.42 SQ.FT.
TOTAL AREA	63.36 SQ.M.	682.00 SQ.FT.



FLOOR PLAN 1. All dimensions are in imperial and metric, and measured from finish to finish excluding construction tolerances. 2. All materials, dimensions, and drawings are approximate only. 3. Information is subject to change without notice, at developer's absolute discretion. 4. Actual area may vary from the stated area. 5. Drawings not to scale. 6. All images used are for illustrative purpose only and do not represent the actual size, features, specifications, fittings, and finishings. 7. The developer reserves the right to make revisions / alterations, at its absolute discretion, without any liability whatsoever.

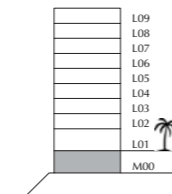
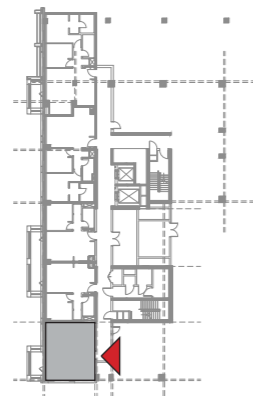
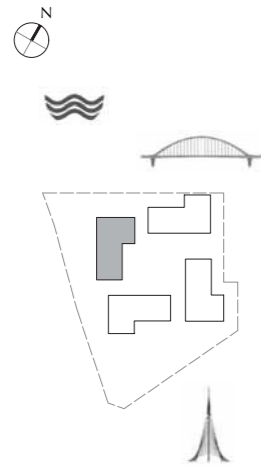
DUBAI CREEK  
HARBOUR

BAYSHORE AT  
CREEK BEACH

BUILDING 2  
MEZZANINE LEVEL  
UNIT M05

1 BEDROOM

APARTMENT AREA	54.50 SQ.M.	586.63 SQ.FT.
BALCONY AREA	7.40 SQ.M.	79.65 SQ.FT.
TOTAL AREA	61.90 SQ.M.	666.28 SQ.FT.



FLOOR PLAN 1. All dimensions are in imperial and metric, and measured from finish to finish excluding construction tolerances. 2. All materials, dimensions, and drawings are approximate only. 3. Information is subject to change without notice, at developer's absolute discretion. 4. Actual area may vary from the stated area. 5. Drawings not to scale. 6. All images used are for illustrative purpose only and do not represent the actual size, features, specifications, fittings, and finishings. 7. The developer reserves the right to make revisions / alterations, at its absolute discretion, without any liability whatsoever.

DUBAI CREEK  
HARBOUR

BAYSHORE AT  
CREEK BEACH

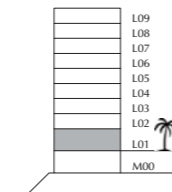
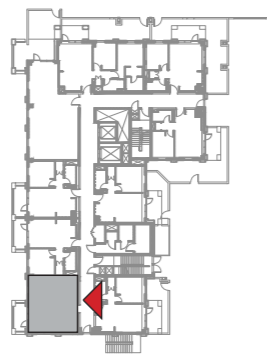
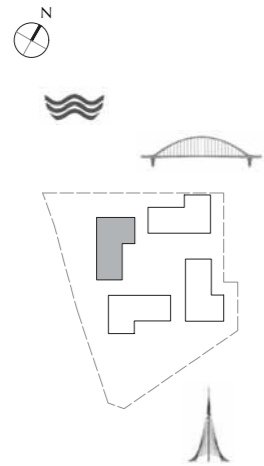
BUILDING 2

LEVEL 1

UNIT 103

1 BEDROOM

APARTMENT AREA	54.60 SQ.M.	587.71 SQ.FT.
BALCONY AREA	7.40 SQ.M.	79.65 SQ.FT.
TOTAL AREA	62.00 SQ.M.	667.36 SQ.FT.



FLOOR PLAN 1. All dimensions are in imperial and metric, and measured from finish to finish excluding construction tolerances. 2. All materials, dimensions, and drawings are approximate only. 3. Information is subject to change without notice, at developer's absolute discretion. 4. Actual area may vary from the stated area. 5. Drawings not to scale. 6. All images used are for illustrative purpose only and do not represent the actual size, features, specifications, fittings, and finishings. 7. The developer reserves the right to make revisions / alterations, at its absolute discretion, without any liability whatsoever.

DUBAI CREEK  
HARBOUR

BAYSHORE AT  
CREEK BEACH

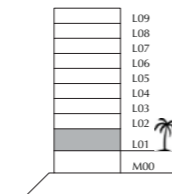
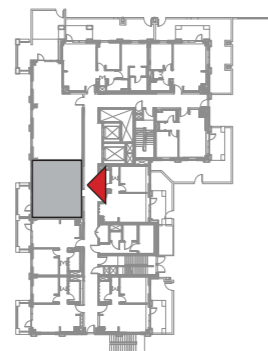
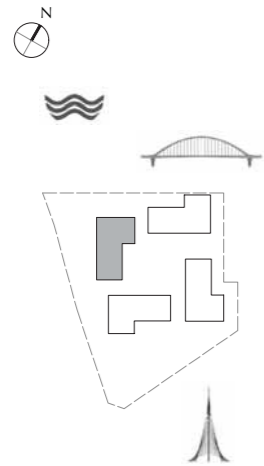
BUILDING 2

LEVEL 1

UNIT 105

1 BEDROOM

APARTMENT AREA	54.95 SQ.M.	591.48 SQ.FT.
BALCONY AREA	8.40 SQ.M.	90.42 SQ.FT.
TOTAL AREA	63.35 SQ.M.	681.90 SQ.FT.



FLOOR PLAN 1. All dimensions are in imperial and metric, and measured from finish to finish excluding construction tolerances. 2. All materials, dimensions, and drawings are approximate only. 3. Information is subject to change without notice, at developer's absolute discretion. 4. Actual area may vary from the stated area. 5. Drawings not to scale. 6. All images used are for illustrative purpose only and do not represent the actual size, features, specifications, fittings, and finishings. 7. The developer reserves the right to make revisions / alterations, at its absolute discretion, without any liability whatsoever.

DUBAI CREEK  
HARBOUR

BAYSHORE AT  
CREEK BEACH

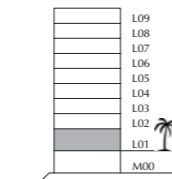
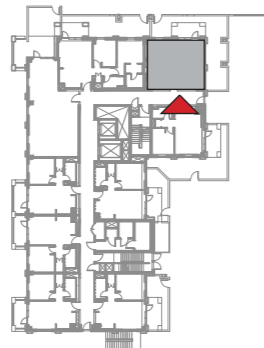
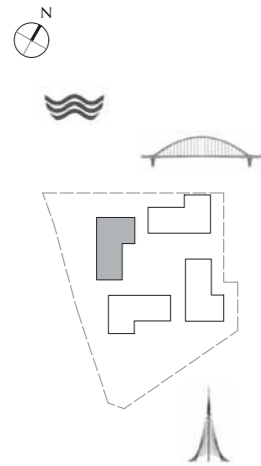
BUILDING 2

LEVEL 1

UNIT 108

1 BEDROOM

APARTMENT AREA	55.82 SQ.M.	600.84 SQ.FT.
BALCONY AREA	57.50 SQ.M.	618.92 SQ.FT.
TOTAL AREA	113.32 SQ.M.	1219.76 SQ.FT.



FLOOR PLAN 1. All dimensions are in imperial and metric, and measured from finish to finish excluding construction tolerances. 2. All materials, dimensions, and drawings are approximate only. 3. Information is subject to change without notice, at developer's absolute discretion. 4. Actual area may vary from the stated area. 5. Drawings not to scale. 6. All images used are for illustrative purpose only and do not represent the actual size, features, specifications, fittings, and finishings. 7. The developer reserves the right to make revisions / alterations, at its absolute discretion, without any liability whatsoever.



DUBAI CREEK  
HARBOUR

BAYSHORE AT  
CREEK BEACH

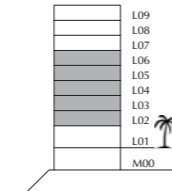
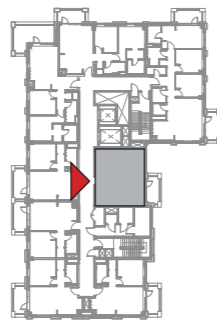
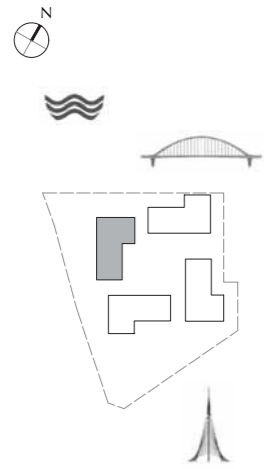
BUILDING 2

LEVEL 2, 3, 4, 5, 6

UNIT 201, 301, 401, 501, 601

1 BEDROOM

APARTMENT AREA	55.35 SQ.M.	595.78 SQ.FT.
BALCONY AREA	7.60 SQ.M.	81.81 SQ.FT.
TOTAL AREA	62.95 SQ.M.	677.59 SQ.FT.



FLOOR PLAN 1. All dimensions are in imperial and metric, and measured from finish to finish excluding construction tolerances. 2. All materials, dimensions, and drawings are approximate only. 3. Information is subject to change without notice, at developer's absolute discretion. 4. Actual area may vary from the stated area. 5. Drawings not to scale. 6. All images used are for illustrative purpose only and do not represent the actual size, features, specifications, fittings, and finishings. 7. The developer reserves the right to make revisions / alterations, at its absolute discretion, without any liability whatsoever.

DUBAI CREEK  
HARBOUR

BAYSHORE AT  
CREEK BEACH

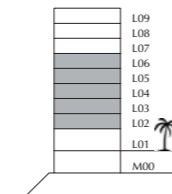
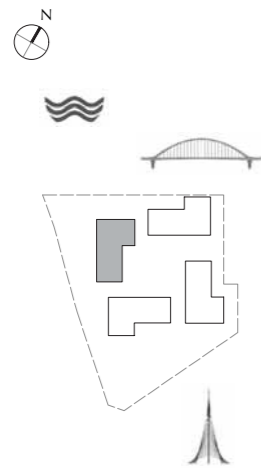
BUILDING 2

LEVEL 2, 3, 4, 5, 6

UNIT 204, 304, 404, 504, 604

1 BEDROOM

APARTMENT AREA	55.10 SQ.M.	593.09 SQ.FT.
BALCONY AREA	8.40 SQ.M.	90.42 SQ.FT.
TOTAL AREA	63.50 SQ.M.	683.51 SQ.FT.



FLOOR PLAN 1. All dimensions are in imperial and metric, and measured from finish to finish excluding construction tolerances. 2.All materials, dimensions, and drawings are approximate only. 3. Information is subject to change without notice, at developer's absolute discretion. 4. Actual area may vary from the stated area. 5. Drawings not to scale. 6. All images used are for illustrative purpose only and do not represent the actual size, features, specifications, fittings, and finishings. 7. The developer reserves the right to make revisions / alterations, at it's a absolute discretion, without any liability whatsoever.

DUBAI CREEK  
HARBOUR

BAYSHORE AT  
CREEK BEACH

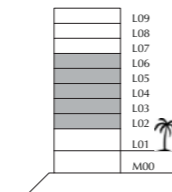
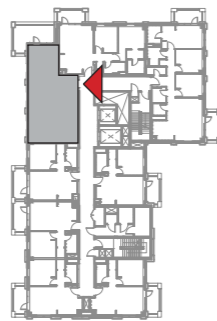
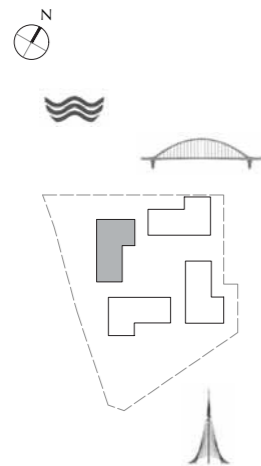
BUILDING 2

LEVEL 2, 3, 4, 5, 6

UNIT 206, 306, 406, 506, 606

2 BEDROOM

APARTMENT AREA	82.73 SQ.M.	890.50 SQ.FT.
BALCONY AREA	18.48 SQ.M.	198.92 SQ.FT.
TOTAL AREA	101.21 SQ.M.	1089.42 SQ.FT.



FLOOR PLAN 1. All dimensions are in imperial and metric, and measured from finish to finish excluding construction tolerances. 2. All materials, dimensions, and drawings are approximate only. 3. Information is subject to change without notice, at developer's absolute discretion. 4. Actual area may vary from the stated area. 5. Drawings not to scale. 6. All images used are for illustrative purpose only and do not represent the actual size, features, specifications, fittings, and finishings. 7. The developer reserves the right to make revisions / alterations, at its absolute discretion, without any liability whatsoever.

DUBAI CREEK  
HARBOUR

BAYSHORE AT  
CREEK BEACH

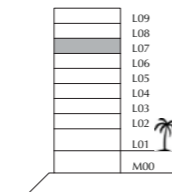
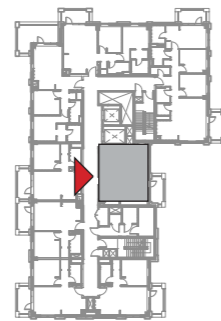
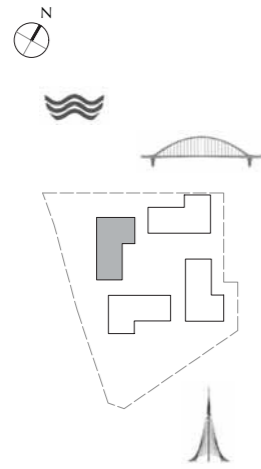
BUILDING 2

LEVEL 7

UNIT 701

1 BEDROOM

APARTMENT AREA	55.35 SQ.M.	595.78 SQ.FT.
BALCONY AREA	7.60 SQ.M.	81.81 SQ.FT.
TOTAL AREA	62.95 SQ.M.	677.59 SQ.FT.



FLOOR PLAN 1. All dimensions are in imperial and metric, and measured from finish to finish excluding construction tolerances. 2. All materials, dimensions, and drawings are approximate only. 3. Information is subject to change without notice, at developer's absolute discretion. 4. Actual area may vary from the stated area. 5. Drawings not to scale. 6. All images used are for illustrative purpose only and do not represent the actual size, features, specifications, fittings, and finishings. 7. The developer reserves the right to make revisions / alterations, at its absolute discretion, without any liability whatsoever.

DUBAI CREEK  
HARBOUR

BAYSHORE AT  
CREEK BEACH

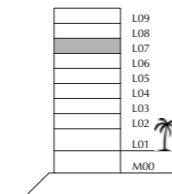
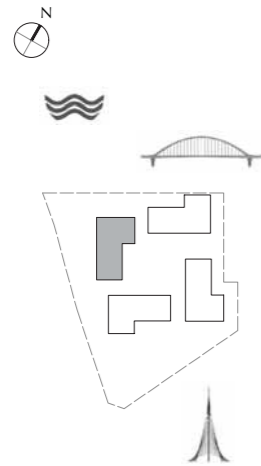
BUILDING 2

LEVEL 7

UNIT 703

1 BEDROOM

APARTMENT AREA	56.67 SQ.M.	609.99 SQ.FT.
BALCONY AREA	7.40 SQ.M.	79.65 SQ.FT.
TOTAL AREA	64.07 SQ.M.	689.64 SQ.FT.



FLOOR PLAN 1. All dimensions are in imperial and metric, and measured from finish to finish excluding construction tolerances. 2. All materials, dimensions, and drawings are approximate only. 3. Information is subject to change without notice, at developer's absolute discretion. 4. Actual area may vary from the stated area. 5. Drawings not to scale. 6. All images used are for illustrative purpose only and do not represent the actual size, features, specifications, fittings, and finishings. 7. The developer reserves the right to make revisions / alterations, at its absolute discretion, without any liability whatsoever.

DUBAI CREEK  
HARBOUR

BAYSHORE AT  
CREEK BEACH

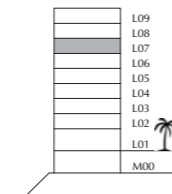
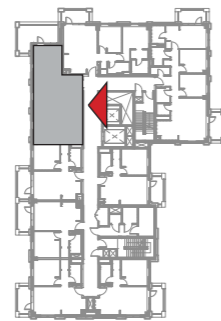
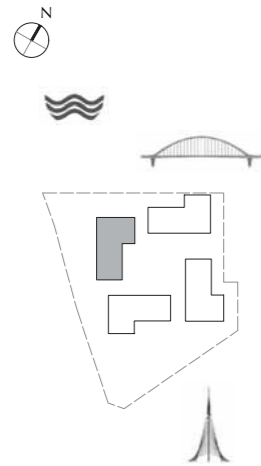
BUILDING 2

LEVEL 7

UNIT 706

2 BEDROOM

APARTMENT AREA	82.73 SQ.M.	890.50 SQ.FT.
BALCONY AREA	18.48 SQ.M.	198.92 SQ.FT.
TOTAL AREA	101.21 SQ.M.	1089.42 SQ.FT.



FLOOR PLAN 1. All dimensions are in imperial and metric, and measured from finish to finish excluding construction tolerances. 2. All materials, dimensions, and drawings are approximate only. 3. Information is subject to change without notice, at developer's absolute discretion. 4. Actual area may vary from the stated area. 5. Drawings not to scale. 6. All images used are for illustrative purpose only and do not represent the actual size, features, specifications, fittings, and finishings. 7. The developer reserves the right to make revisions / alterations, at its absolute discretion, without any liability whatsoever.

DUBAI CREEK  
HARBOUR

BAYSHORE AT  
CREEK BEACH

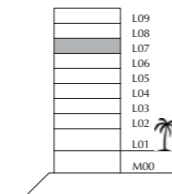
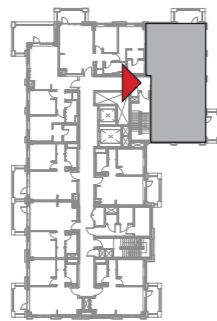
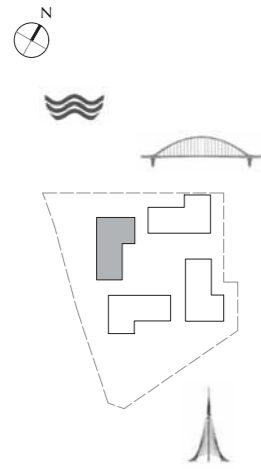
BUILDING 2

LEVEL 7

UNIT 708

3 BEDROOM

APARTMENT AREA	123.57 SQ.M.	1330.10 SQ.FT.
BALCONY AREA	14.79 SQ.M.	159.20 SQ.FT.
TOTAL AREA	138.36 SQ.M.	1489.30 SQ.FT.



FLOOR PLAN 1. All dimensions are in imperial and metric, and measured from finish to finish excluding construction tolerances. 2. All materials, dimensions, and drawings are approximate only. 3. Information is subject to change without notice, at developer's absolute discretion. 4. Actual area may vary from the stated area. 5. Drawings not to scale. 6. All images used are for illustrative purpose only and do not represent the actual size, features, specifications, fittings, and finishings. 7. The developer reserves the right to make revisions / alterations, at its absolute discretion, without any liability whatsoever.

DUBAI CREEK  
HARBOUR

BAYSHORE AT  
CREEK BEACH

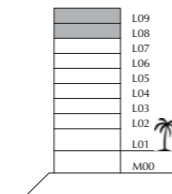
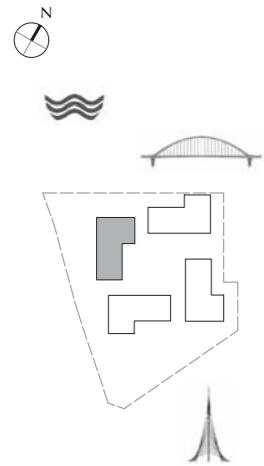
BUILDING 2

LEVEL 8, 9

UNIT 803, 903

1 BEDROOM

APARTMENT AREA	56.67 SQ.M.	609.99 SQ.FT.
BALCONY AREA	7.40 SQ.M.	79.65 SQ.FT.
TOTAL AREA	64.07 SQ.M.	689.64 SQ.FT.



FLOOR PLAN 1. All dimensions are in imperial and metric, and measured from finish to finish excluding construction tolerances. 2. All materials, dimensions, and drawings are approximate only. 3. Information is subject to change without notice, at developer's absolute discretion. 4. Actual area may vary from the stated area. 5. Drawings not to scale. 6. All images used are for illustrative purpose only and do not represent the actual size, features, specifications, fittings, and finishings. 7. The developer reserves the right to make revisions / alterations, at its absolute discretion, without any liability whatsoever.



DUBAI CREEK  
HARBOUR

BAYSHORE AT  
CREEK BEACH

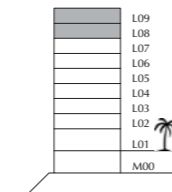
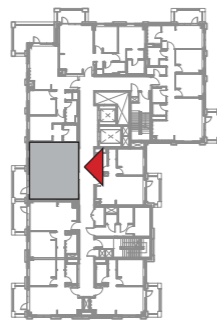
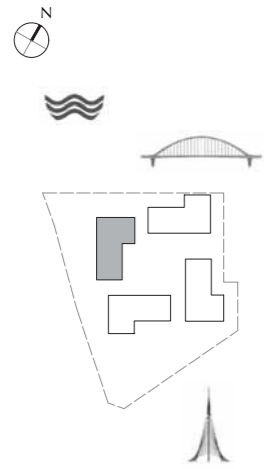
BUILDING 2

LEVEL 8, 9

UNIT 805, 905

1 BEDROOM

APARTMENT AREA	54.95 SQ.M.	591.48 SQ.FT.
BALCONY AREA	8.40 SQ.M.	90.42 SQ.FT.
TOTAL AREA	63.35 SQ.M.	681.90 SQ.FT.



FLOOR PLAN 1. All dimensions are in imperial and metric, and measured from finish to finish excluding construction tolerances. 2. All materials, dimensions, and drawings are approximate only. 3. Information is subject to change without notice, at developer's absolute discretion. 4. Actual area may vary from the stated area. 5. Drawings not to scale. 6. All images used are for illustrative purpose only and do not represent the actual size, features, specifications, fittings, and finishings. 7. The developer reserves the right to make revisions / alterations, at its absolute discretion, without any liability whatsoever.

DUBAI CREEK  
HARBOUR

BAYSHORE AT  
CREEK BEACH

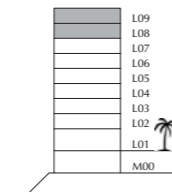
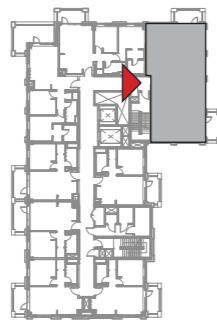
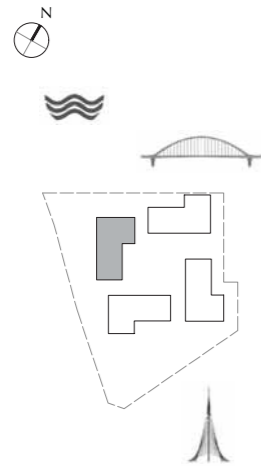
BUILDING 2

LEVEL 8, 9

UNIT 808, 908

3 BEDROOM

APARTMENT AREA	123.57 SQ.M.	1330.10 SQ.FT.
BALCONY AREA	14.79 SQ.M.	159.20 SQ.FT.
TOTAL AREA	138.36 SQ.M.	1489.30 SQ.FT.



FLOOR PLAN 1. All dimensions are in imperial and metric, and measured from finish to finish excluding construction tolerances. 2. All materials, dimensions, and drawings are approximate only. 3. Information is subject to change without notice, at developer's absolute discretion. 4. Actual area may vary from the stated area. 5. Drawings not to scale. 6. All images used are for illustrative purpose only and do not represent the actual size, features, specifications, fittings, and finishings. 7. The developer reserves the right to make revisions / alterations, at its absolute discretion, without any liability whatsoever.

DUBAI CREEK  
HARBOUR

BAYSHORE AT  
CREEK BEACH

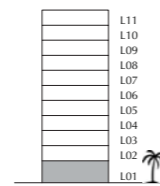
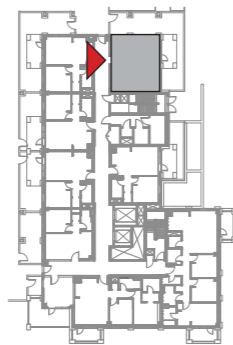
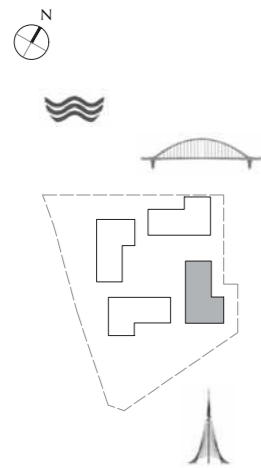
BUILDING 3

LEVEL 1

UNIT 102

1 BEDROOM

APARTMENT AREA	54.88 SQ.M.	590.72 SQ.FT.
BALCONY AREA	58.11 SQ.M.	625.49 SQ.FT.
TOTAL AREA	112.99 SQ.M.	1216.21 SQ.FT.



FLOOR PLAN 1. All dimensions are in imperial and metric, and measured from finish to finish excluding construction tolerances. 2. All materials, dimensions, and drawings are approximate only. 3. Information is subject to change without notice, at developer's absolute discretion. 4. Actual area may vary from the stated area. 5. Drawings not to scale. 6. All images used are for illustrative purpose only and do not represent the actual size, features, specifications, fittings, and finishings. 7. The developer reserves the right to make revisions / alterations, at its absolute discretion, without any liability whatsoever.

DUBAI CREEK  
HARBOUR

BAYSHORE AT  
CREEK BEACH

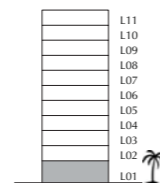
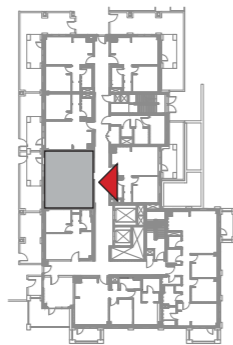
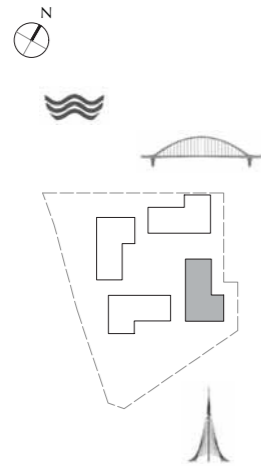
BUILDING 3

LEVEL 1

UNIT 105

1 BEDROOM

APARTMENT AREA	54.88 SQ.M.	590.72 SQ.FT.
BALCONY AREA	26.75 SQ.M.	287.93 SQ.FT.
TOTAL AREA	81.63 SQ.M.	878.65 SQ.FT.



FLOOR PLAN 1. All dimensions are in imperial and metric, and measured from finish to finish excluding construction tolerances. 2.All materials, dimensions, and drawings are approximate only. 3. Information is subject to change without notice, at developer's absolute discretion. 4. Actual area may vary from the stated area. 5. Drawings not to scale. 6. All images used are for illustrative purpose only and do not represent the actual size, features, specifications, fittings, and finishings. 7. The developer reserves the right to make revisions / alterations, at it's a absolute discretion, without any liability whatsoever.

DUBAI CREEK  
HARBOUR

BAYSHORE AT  
CREEK BEACH

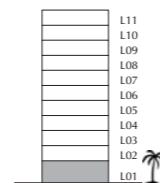
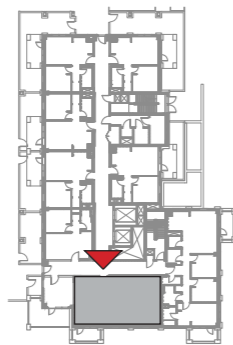
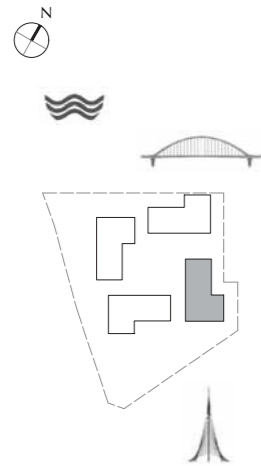
BUILDING 3

LEVEL 1

UNIT 107

2 BEDROOM

APARTMENT AREA	83.48 SQ.M.	898.57 SQ.FT.
BALCONY AREA	7.40 SQ.M.	79.65 SQ.FT.
TOTAL AREA	90.88 SQ.M.	978.22 SQ.FT.



FLOOR PLAN 1. All dimensions are in imperial and metric, and measured from finish to finish excluding construction tolerances. 2. All materials, dimensions, and drawings are approximate only. 3. Information is subject to change without notice, at developer's absolute discretion. 4. Actual area may vary from the stated area. 5. Drawings not to scale. 6. All images used are for illustrative purpose only and do not represent the actual size, features, specifications, fittings, and finishings. 7. The developer reserves the right to make revisions / alterations, at its absolute discretion, without any liability whatsoever.

DUBAI CREEK  
HARBOUR

BAYSHORE AT  
CREEK BEACH

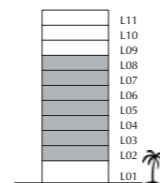
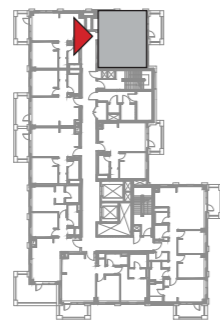
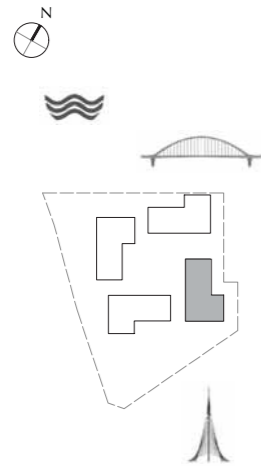
BUILDING 3

LEVEL 2, 3, 4, 5, 6, 7, 8

UNIT 202, 302, 402, 502, 602, 702, 802

1 BEDROOM

APARTMENT AREA	56.94 SQ.M.	612.90 SQ.FT.
BALCONY AREA	7.40 SQ.M.	79.65 SQ.FT.
TOTAL AREA	64.34 SQ.M.	692.55 SQ.FT.



FLOOR PLAN 1. All dimensions are in imperial and metric, and measured from finish to finish excluding construction tolerances. 2. All materials, dimensions, and drawings are approximate only. 3. Information is subject to change without notice, at developer's absolute discretion. 4. Actual area may vary from the stated area. 5. Drawings not to scale. 6. All images used are for illustrative purpose only and do not represent the actual size, features, specifications, fittings, and finishings. 7. The developer reserves the right to make revisions / alterations, at its absolute discretion, without any liability whatsoever.

DUBAI CREEK  
HARBOUR

BAYSHORE AT  
CREEK BEACH

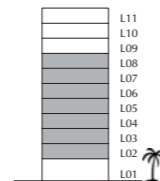
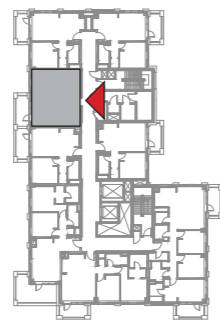
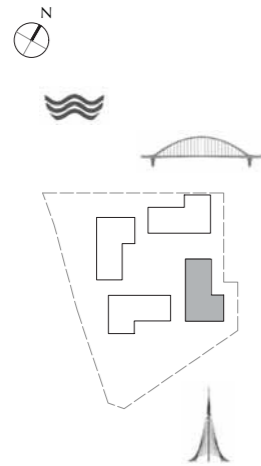
BUILDING 3

LEVEL 2, 3, 4, 5, 6, 7, 8

UNIT 204, 304, 404, 504, 604, 704, 804

1 BEDROOM

APARTMENT AREA	55.10 SQ.M.	593.09 SQ.FT.
BALCONY AREA	8.40 SQ.M.	90.42 SQ.FT.
TOTAL AREA	63.50 SQ.M.	683.51 SQ.FT.



FLOOR PLAN 1. All dimensions are in imperial and metric, and measured from finish to finish excluding construction tolerances. 2. All materials, dimensions, and drawings are approximate only. 3. Information is subject to change without notice, at developer's absolute discretion. 4. Actual area may vary from the stated area. 5. Drawings not to scale. 6. All images used are for illustrative purpose only and do not represent the actual size, features, specifications, fittings, and finishings. 7. The developer reserves the right to make revisions / alterations, at its absolute discretion, without any liability whatsoever.

DUBAI CREEK  
HARBOUR

BAYSHORE AT  
CREEK BEACH

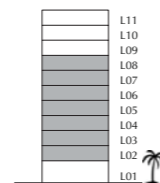
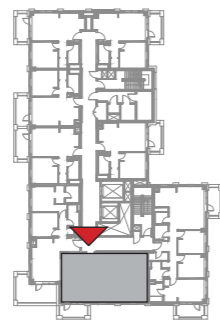
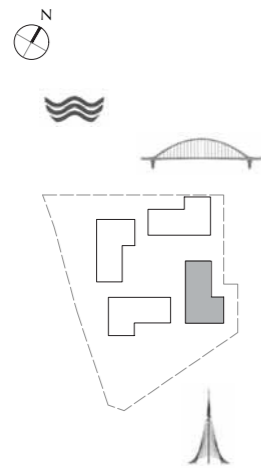
BUILDING 3

LEVEL 2, 3, 4, 5, 6, 7, 8

UNIT 207, 307, 407, 507, 607, 707, 807

2 BEDROOM

APARTMENT AREA	83.48 SQ.M.	898.57 SQ.FT.
BALCONY AREA	7.40 SQ.M.	79.65 SQ.FT.
TOTAL AREA	90.88 SQ.M.	978.22 SQ.FT.



FLOOR PLAN 1. All dimensions are in imperial and metric, and measured from finish to finish excluding construction tolerances. 2. All materials, dimensions, and drawings are approximate only. 3. Information is subject to change without notice, at developer's absolute discretion. 4. Actual area may vary from the stated area. 5. Drawings not to scale. 6. All images used are for illustrative purpose only and do not represent the actual size, features, specifications, fittings, and furnishings. 7. The developer reserves the right to make revisions / alterations, at its absolute discretion, without any liability whatsoever.



DUBAI CREEK  
HARBOUR

BAYSHORE AT  
CREEK BEACH

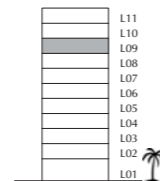
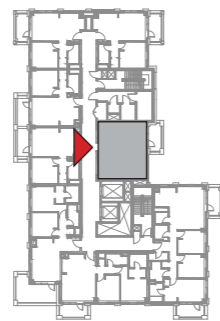
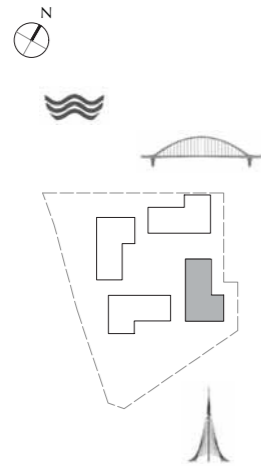
BUILDING 3

LEVEL 9

UNIT 901

1 BEDROOM

APARTMENT AREA	55.42 SQ.M.	596.54 SQ.FT.
BALCONY AREA	7.60 SQ.M.	81.81 SQ.FT.
TOTAL AREA	63.02 SQ.M.	678.35 SQ.FT.



FLOOR PLAN 1. All dimensions are in imperial and metric, and measured from finish to finish excluding construction tolerances. 2. All materials, dimensions, and drawings are approximate only. 3. Information is subject to change without notice, at developer's absolute discretion. 4. Actual area may vary from the stated area. 5. Drawings not to scale. 6. All images used are for illustrative purpose only and do not represent the actual size, features, specifications, fittings, and finishings. 7. The developer reserves the right to make revisions / alterations, at its absolute discretion, without any liability whatsoever.

DUBAI CREEK  
HARBOUR

BAYSHORE AT  
CREEK BEACH

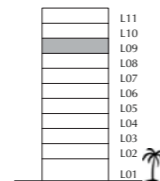
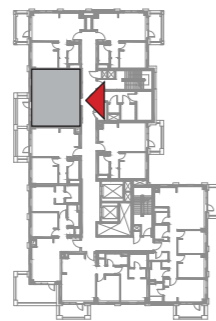
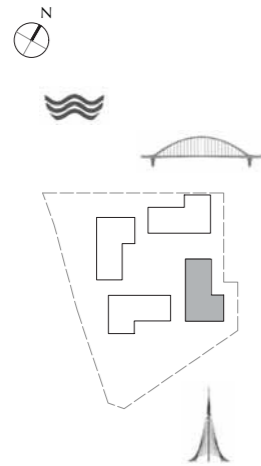
BUILDING 3

LEVEL 9

UNIT 904

1 BEDROOM

APARTMENT AREA	55.10 SQ.M.	593.09 SQ.FT.
BALCONY AREA	8.40 SQ.M.	90.42 SQ.FT.
TOTAL AREA	63.50 SQ.M.	683.51 SQ.FT.



FLOOR PLAN 1. All dimensions are in imperial and metric, and measured from finish to finish excluding construction tolerances. 2. All materials, dimensions, and drawings are approximate only. 3. Information is subject to change without notice, at developer's absolute discretion. 4. Actual area may vary from the stated area. 5. Drawings not to scale. 6. All images used are for illustrative purpose only and do not represent the actual size, features, specifications, fittings, and finishings. 7. The developer reserves the right to make revisions / alterations, at its absolute discretion, without any liability whatsoever.

DUBAI CREEK  
HARBOUR

BAYSHORE AT  
CREEK BEACH

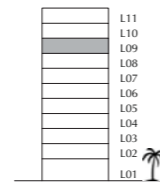
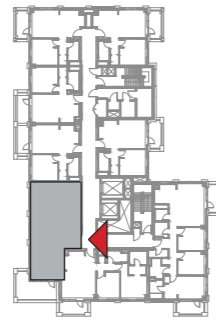
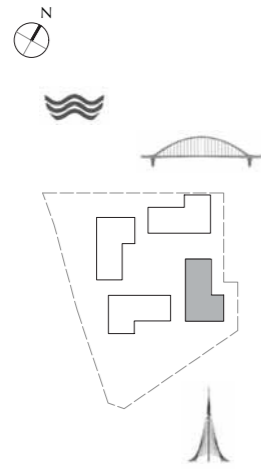
BUILDING 3

LEVEL 9

UNIT 906

2 BEDROOM

APARTMENT AREA	82.73 SQ.M.	890.50 SQ.FT.
BALCONY AREA	18.48 SQ.M.	198.92 SQ.FT.
TOTAL AREA	101.21 SQ.M.	1089.42 SQ.FT.



FLOOR PLAN 1. All dimensions are in imperial and metric, and measured from finish to finish excluding construction tolerances. 2. All materials, dimensions, and drawings are approximate only. 3. Information is subject to change without notice, at developer's absolute discretion. 4. Actual area may vary from the stated area. 5. Drawings not to scale. 6. All images used are for illustrative purpose only and do not represent the actual size, features, specifications, fittings, and finishings. 7. The developer reserves the right to make revisions / alterations, at its absolute discretion, without any liability whatsoever.

DUBAI CREEK  
HARBOUR

BAYSHORE AT  
CREEK BEACH

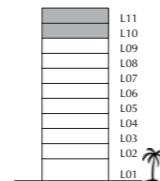
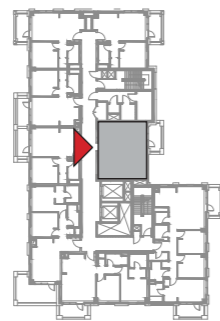
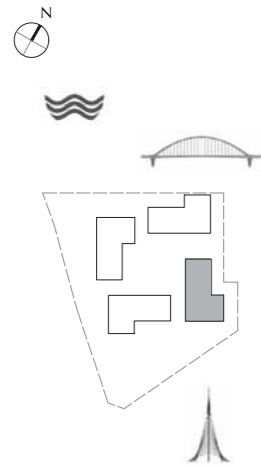
BUILDING 3

LEVEL 10, 11

UNIT 1001, 1101

1 BEDROOM

APARTMENT AREA	55.42 SQ.M.	596.54 SQ.FT.
BALCONY AREA	7.60 SQ.M.	81.81 SQ.FT.
TOTAL AREA	63.02 SQ.M.	678.35 SQ.FT.



FLOOR PLAN 1. All dimensions are in imperial and metric, and measured from finish to finish excluding construction tolerances. 2.All materials, dimensions, and drawings are approximate only. 3. Information is subject to change without notice, at developer's absolute discretion. 4. Actual area may vary from the stated area. 5. Drawings not to scale. 6. All images used are for illustrative purpose only and do not represent the actual size, features, specifications, fittings, and finishings. 7. The developer reserves the right to make revisions / alterations, at its absolute discretion, without any liability whatsoever.

DUBAI CREEK  
HARBOUR

BAYSHORE AT  
CREEK BEACH

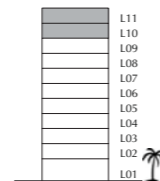
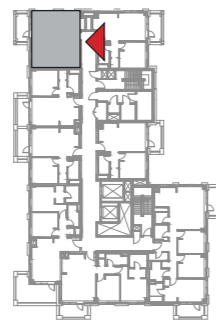
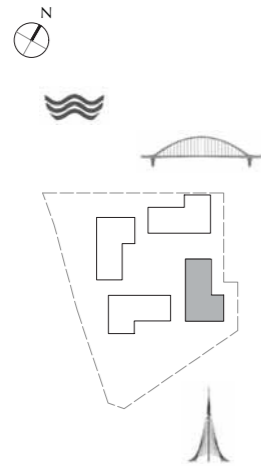
BUILDING 3

LEVEL 10, 11

UNIT 1003, 1103

1 BEDROOM

APARTMENT AREA	56.67 SQ.M.	609.99 SQ.FT.
BALCONY AREA	7.40 SQ.M.	79.65 SQ.FT.
TOTAL AREA	64.07 SQ.M.	689.64 SQ.FT.



FLOOR PLAN 1. All dimensions are in imperial and metric, and measured from finish to finish excluding construction tolerances. 2. All materials, dimensions, and drawings are approximate only. 3. Information is subject to change without notice, at developer's absolute discretion. 4. Actual area may vary from the stated area. 5. Drawings not to scale. 6. All images used are for illustrative purpose only and do not represent the actual size, features, specifications, fittings, and finishings. 7. The developer reserves the right to make revisions / alterations, at its absolute discretion, without any liability whatsoever.

DUBAI CREEK  
HARBOUR

BAYSHORE AT  
CREEK BEACH

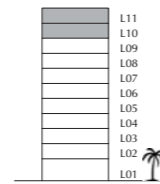
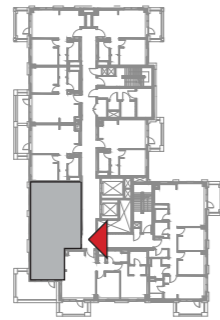
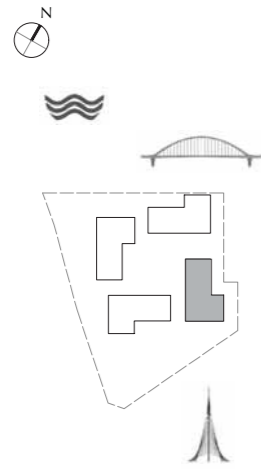
BUILDING 3

LEVEL 10, 11

UNIT 1006, 1106

2 BEDROOM

APARTMENT AREA	82.73 SQ.M.	890.50 SQ.FT.
BALCONY AREA	18.48 SQ.M.	198.92 SQ.FT.
TOTAL AREA	101.21 SQ.M.	1089.42 SQ.FT.



FLOOR PLAN 1. All dimensions are in imperial and metric, and measured from finish to finish excluding construction tolerances. 2. All materials, dimensions, and drawings are approximate only. 3. Information is subject to change without notice, at developer's absolute discretion. 4. Actual area may vary from the stated area. 5. Drawings not to scale. 6. All images used are for illustrative purpose only and do not represent the actual size, features, specifications, fittings, and finishings. 7. The developer reserves the right to make revisions / alterations, at its absolute discretion, without any liability whatsoever.

DUBAI CREEK  
HARBOUR

BAYSHORE AT  
CREEK BEACH

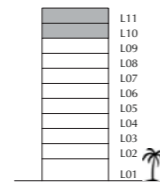
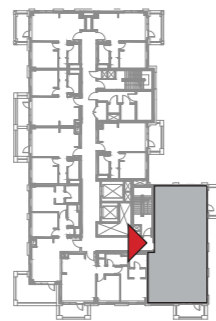
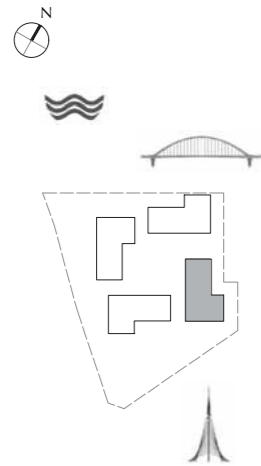
BUILDING 3

LEVEL 10, 11

UNIT 1008, 1108

3 BEDROOM

APARTMENT AREA	123.57 SQ.M.	1330.10 SQ.FT.
BALCONY AREA	14.79 SQ.M.	159.20 SQ.FT.
TOTAL AREA	138.36 SQ.M.	1489.30 SQ.FT.



FLOOR PLAN 1. All dimensions are in imperial and metric, and measured from finish to finish excluding construction tolerances. 2. All materials, dimensions, and drawings are approximate only. 3. Information is subject to change without notice, at developer's absolute discretion. 4. Actual area may vary from the stated area. 5. Drawings not to scale. 6. All images used are for illustrative purpose only and do not represent the actual size, features, specifications, fittings, and finishings. 7. The developer reserves the right to make revisions / alterations, at its absolute discretion, without any liability whatsoever.

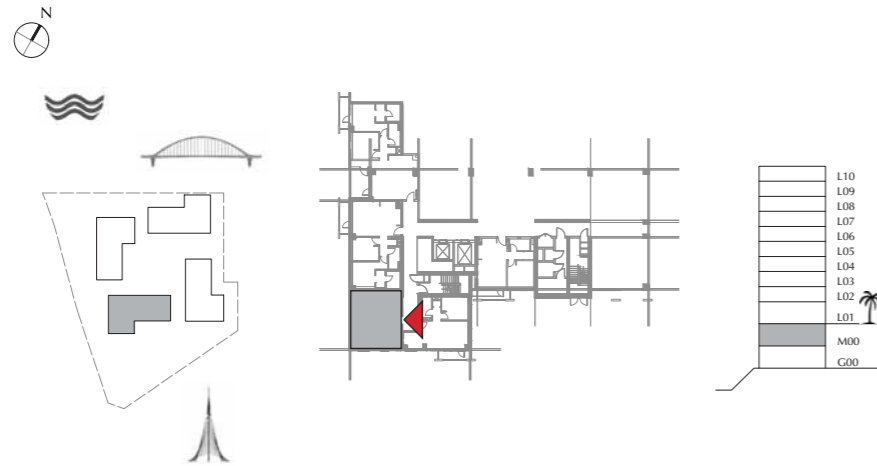
DUBAI CREEK  
HARBOUR

BAYSHORE AT  
CREEK BEACH

BUILDING 4  
MEZZANINE LEVEL  
UNIT M03

1 BEDROOM

APARTMENT AREA	55.51 SQ.M.	597.50 SQ.FT.
BALCONY AREA	00.00 SQ.M.	00.00 SQ.FT.
TOTAL AREA	55.51 SQ.M.	597.50 SQ.FT.



FLOOR PLAN 1. All dimensions are in imperial and metric, and measured from finish to finish excluding construction tolerances. 2. All materials, dimensions, and drawings are approximate only. 3. Information is subject to change without notice, at developer's absolute discretion. 4. Actual area may vary from the stated area. 5. Drawings not to scale. 6. All images used are for illustrative purpose only and do not represent the actual size, features, specifications, fittings, and furnishings. 7. The developer reserves the right to make revisions / alterations, at it's a absolute discretion, without any liability whatsoever.



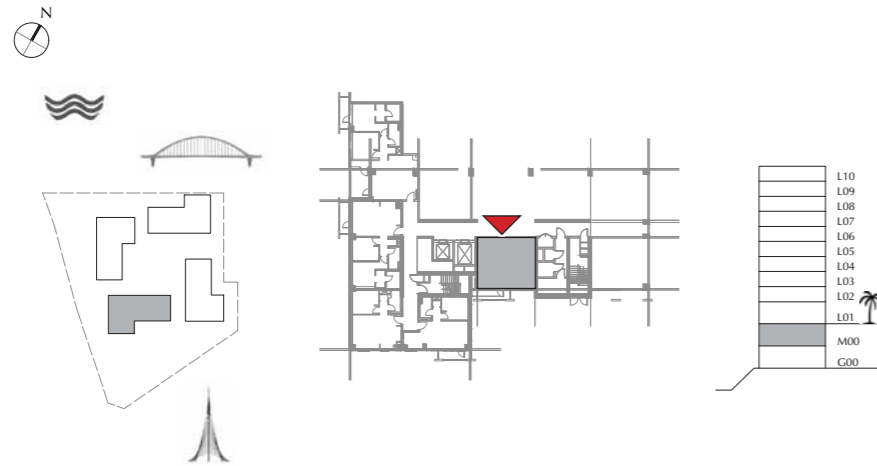
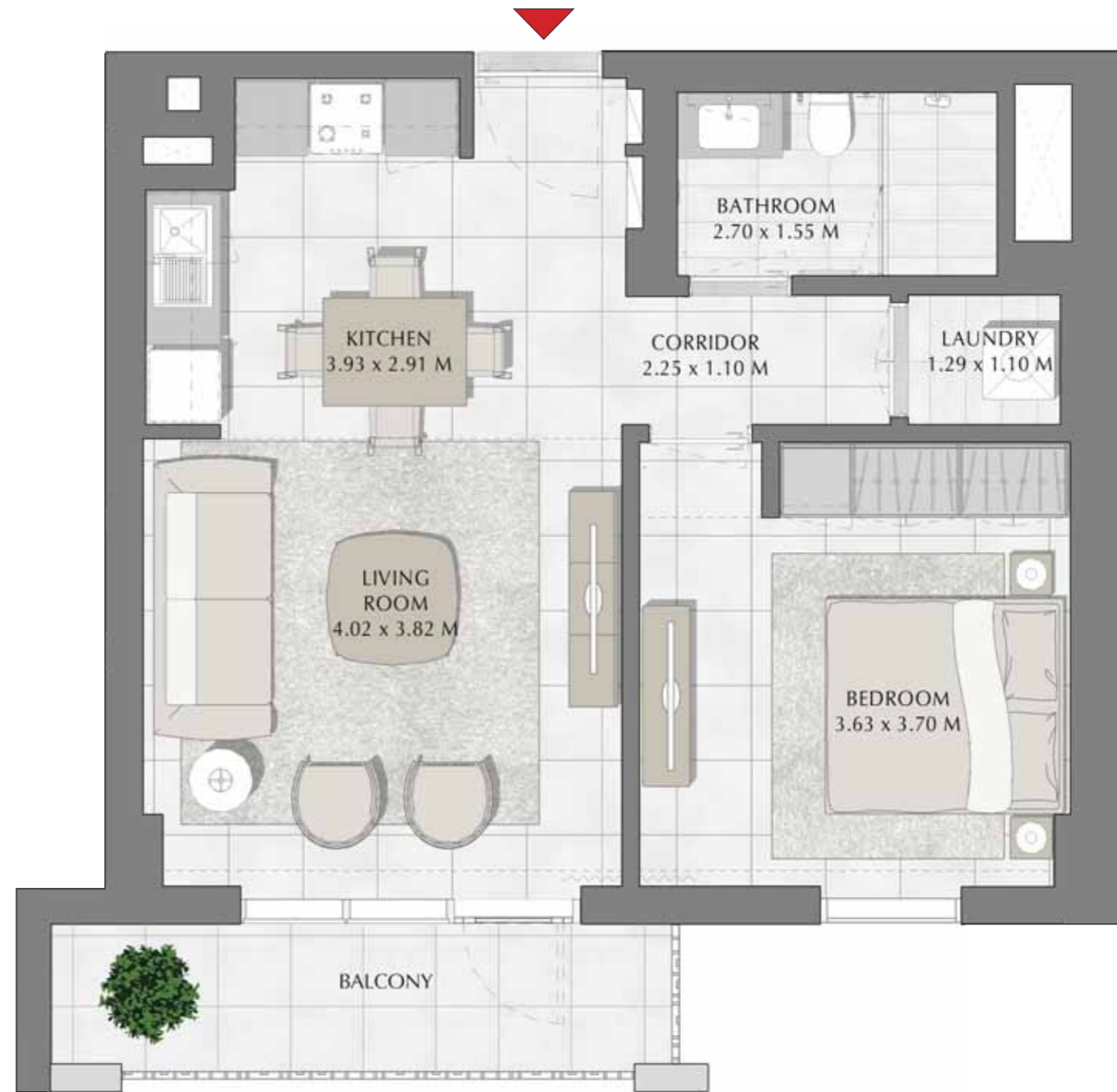
DUBAI CREEK  
HARBOUR

BAYSHORE AT  
CREEK BEACH

BUILDING 4  
MEZZANINE LEVEL  
UNIT M05

1 BEDROOM

APARTMENT AREA	55.57 SQ.M.	598.15 SQ.FT.
BALCONY AREA	7.47 SQ.M.	80.41 SQ.FT.
TOTAL AREA	63.04 SQ.M.	678.56 SQ.FT.



FLOOR PLAN 1. All dimensions are in imperial and metric, and measured from finish to finish excluding construction tolerances. 2. All materials, dimensions, and drawings are approximate only. 3. Information is subject to change without notice, at developer's absolute discretion. 4. Actual area may vary from the stated area. 5. Drawings not to scale. 6. All images used are for illustrative purpose only and do not represent the actual size, features, specifications, fittings, and furnishings. 7. The developer reserves the right to make revisions / alterations, at its absolute discretion, without any liability whatsoever.

DUBAI CREEK  
HARBOUR

BAYSHORE AT  
CREEK BEACH

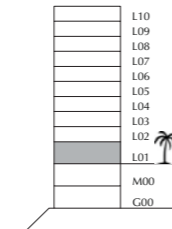
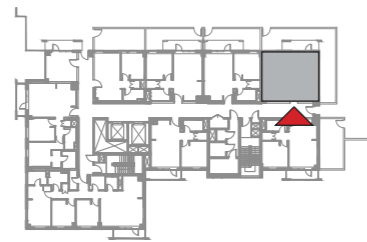
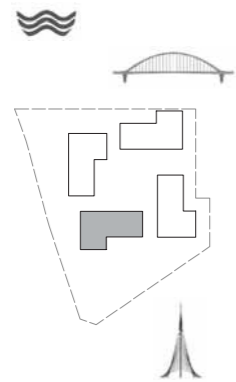
BUILDING 4

LEVEL 1

UNIT 103

1 BEDROOM

APARTMENT AREA	54.47 SQ.M.	586.31 SQ.FT.
BALCONY AREA	50.85 SQ.M.	547.34 SQ.FT.
TOTAL AREA	105.32 SQ.M.	1133.65 SQ.FT.



FLOOR PLAN 1. All dimensions are in imperial and metric, and measured from finish to finish excluding construction tolerances. 2. All materials, dimensions, and drawings are approximate only. 3. Information is subject to change without notice, at developer's absolute discretion. 4. Actual area may vary from the stated area. 5. Drawings not to scale. 6. All images used are for illustrative purpose only and do not represent the actual size, features, specifications, fittings, and furnishings. 7. The developer reserves the right to make revisions / alterations, at its absolute discretion, without any liability whatsoever.

DUBAI CREEK  
HARBOUR

BAYSHORE AT  
CREEK BEACH

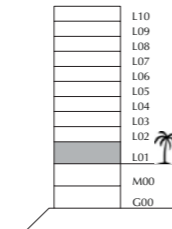
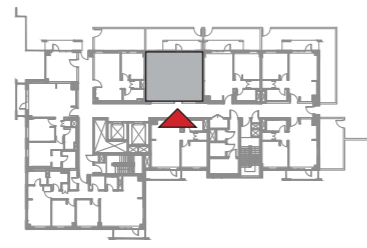
BUILDING 4

LEVEL 1

UNIT 105

1 BEDROOM

APARTMENT AREA	54.92 SQ.M.	591.15 SQ.FT.
BALCONY AREA	25.37 SQ.M.	273.08 SQ.FT.
TOTAL AREA	80.29 SQ.M.	864.23 SQ.FT.



FLOOR PLAN 1. All dimensions are in imperial and metric, and measured from finish to finish excluding construction tolerances. 2. All materials, dimensions, and drawings are approximate only. 3. Information is subject to change without notice, at developer's absolute discretion. 4. Actual area may vary from the stated area. 5. Drawings not to scale. 6. All images used are for illustrative purpose only and do not represent the actual size, features, specifications, fittings, and furnishings. 7. The developer reserves the right to make revisions / alterations, at its absolute discretion, without any liability whatsoever.

DUBAI CREEK  
HARBOUR

BAYSHORE AT  
CREEK BEACH

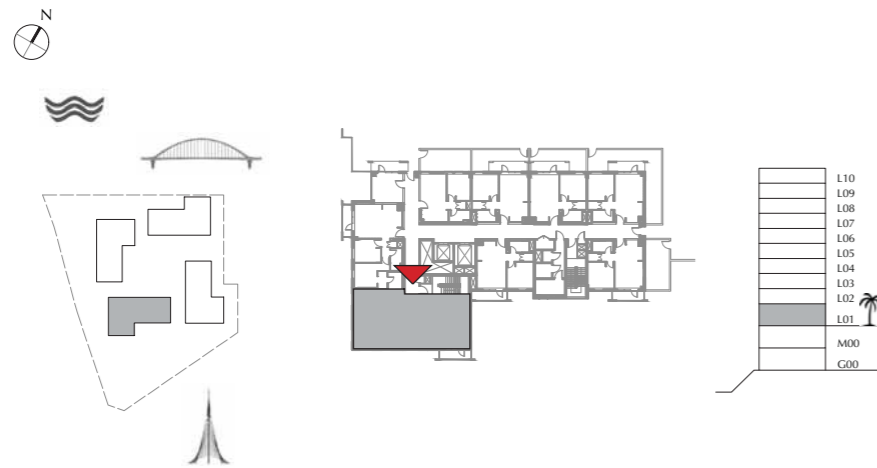
BUILDING 4

LEVEL 1

UNIT 108

3 BEDROOM

APARTMENT AREA	123.43 SQ.M.	1328.59 SQ.FT.
BALCONY AREA	6.01 SQ.M.	64.69 SQ.FT.
TOTAL AREA	129.44 SQ.M.	1393.28 SQ.FT.



FLOOR PLAN 1. All dimensions are in imperial and metric, and measured from finish to finish excluding construction tolerances. 2. All materials, dimensions, and drawings are approximate only. 3. Information is subject to change without notice, at developer's absolute discretion. 4. Actual area may vary from the stated area. 5. Drawings not to scale. 6. All images used are for illustrative purpose only and do not represent the actual size, features, specifications, fittings, and furnishings. 7. The developer reserves the right to make revisions / alterations, at its absolute discretion, without any liability whatsoever.

DUBAI CREEK  
HARBOUR

BAYSHORE AT  
CREEK BEACH

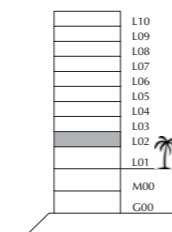
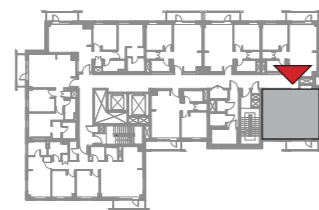
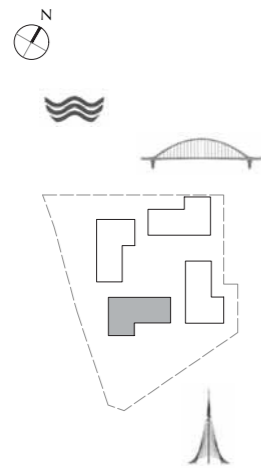
BUILDING 4

LEVEL 2

UNIT 202

1 BEDROOM

APARTMENT AREA	57.00 SQ.M.	613.54 SQ.FT.
BALCONY AREA	6.01 SQ.M.	64.69 SQ.FT.
TOTAL AREA	63.01 SQ.M.	678.23 SQ.FT.



FLOOR PLAN 1. All dimensions are in imperial and metric, and measured from finish to finish excluding construction tolerances. 2. All materials, dimensions, and drawings are approximate only. 3. Information is subject to change without notice, at developer's absolute discretion. 4. Actual area may vary from the stated area. 5. Drawings not to scale. 6. All images used are for illustrative purpose only and do not represent the actual size, features, specifications, fittings, and furnishings. 7. The developer reserves the right to make revisions / alterations, at its absolute discretion, without any liability whatsoever.

DUBAI CREEK  
HARBOUR

BAYSHORE AT  
CREEK BEACH

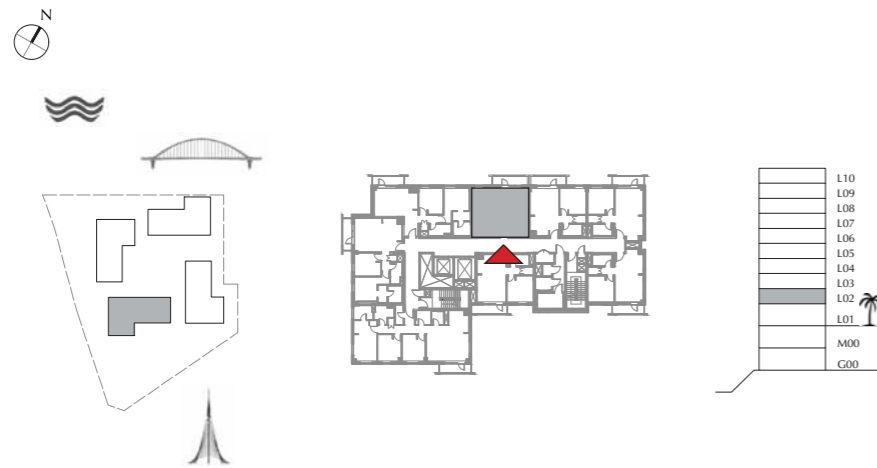
BUILDING 4

LEVEL 2

UNIT 205

1 BEDROOM

APARTMENT AREA	54.95 SQ.M.	591.48 SQ.FT.
BALCONY AREA	6.78 SQ.M.	72.98 SQ.FT.
TOTAL AREA	61.73 SQ.M.	664.46 SQ.FT.



FLOOR PLAN 1. All dimensions are in imperial and metric, and measured from finish to finish excluding construction tolerances. 2. All materials, dimensions, and drawings are approximate only. 3. Information is subject to change without notice, at developer's absolute discretion. 4. Actual area may vary from the stated area. 5. Drawings not to scale. 6. All images used are for illustrative purpose only and do not represent the actual size, features, specifications, fittings, and furnishings. 7. The developer reserves the right to make revisions / alterations, at it's a absolute discretion, without any liability whatsoever.

DUBAI CREEK  
HARBOUR

BAYSHORE AT  
CREEK BEACH

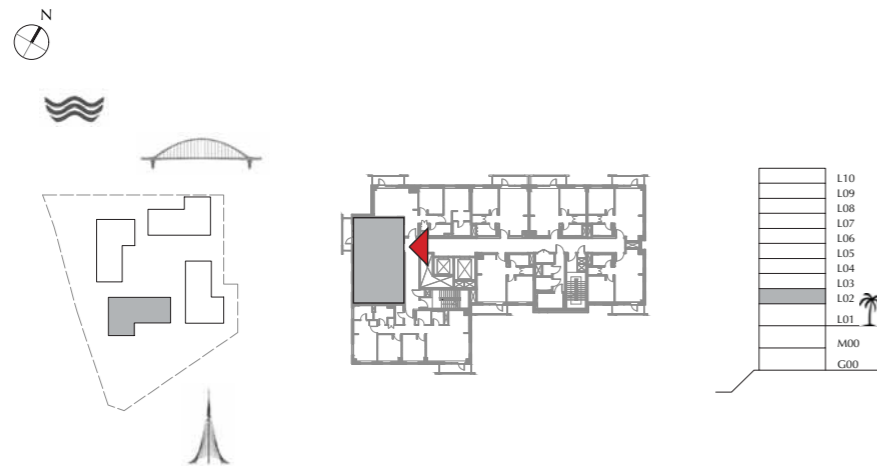
BUILDING 4

LEVEL 2

UNIT 207

2 BEDROOM

APARTMENT AREA	83.48 SQ.M.	898.57 SQ.FT.
BALCONY AREA	6.01 SQ.M.	64.69 SQ.FT.
TOTAL AREA	89.49 SQ.M.	963.26 SQ.FT.



FLOOR PLAN 1. All dimensions are in imperial and metric, and measured from finish to finish excluding construction tolerances. 2. All materials, dimensions, and drawings are approximate only. 3. Information is subject to change without notice, at developer's absolute discretion. 4. Actual area may vary from the stated area. 5. Drawings not to scale. 6. All images used are for illustrative purpose only and do not represent the actual size, features, specifications, fittings, and furnishings. 7. The developer reserves the right to make revisions / alterations, at its absolute discretion, without any liability whatsoever.

DUBAI CREEK  
HARBOUR

BAYSHORE AT  
CREEK BEACH

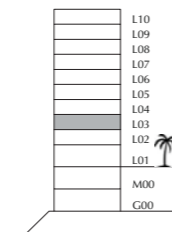
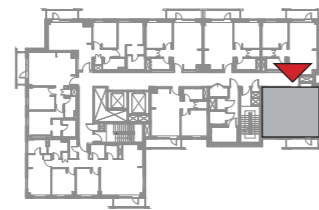
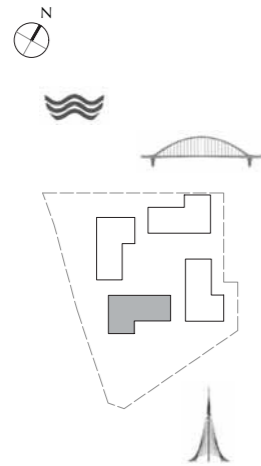
BUILDING 4

LEVEL 3

UNIT 302

1 BEDROOM

APARTMENT AREA	57.00 SQ.M.	613.54 SQ.FT.
BALCONY AREA	6.01 SQ.M.	64.69 SQ.FT.
TOTAL AREA	63.01 SQ.M.	678.23 SQ.FT.



FLOOR PLAN 1. All dimensions are in imperial and metric, and measured from finish to finish excluding construction tolerances. 2. All materials, dimensions, and drawings are approximate only. 3. Information is subject to change without notice, at developer's absolute discretion. 4. Actual area may vary from the stated area. 5. Drawings not to scale. 6. All images used are for illustrative purpose only and do not represent the actual size, features, specifications, fittings, and furnishings. 7. The developer reserves the right to make revisions / alterations, at its absolute discretion, without any liability whatsoever.



DUBAI CREEK  
HARBOUR

BAYSHORE AT  
CREEK BEACH

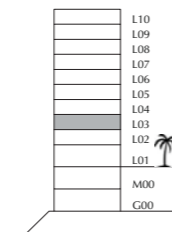
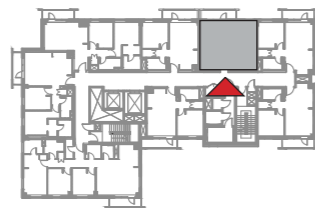
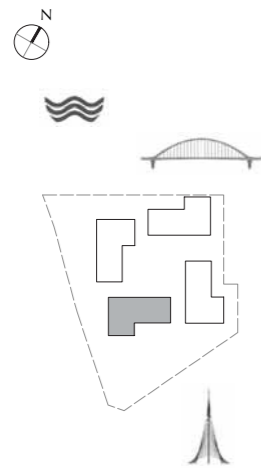
BUILDING 4

LEVEL 3

UNIT 304

1 BEDROOM

APARTMENT AREA	55.10 SQ.M.	593.09 SQ.FT.
BALCONY AREA	6.78 SQ.M.	72.98 SQ.FT.
TOTAL AREA	61.88 SQ.M.	666.07 SQ.FT.



FLOOR PLAN 1. All dimensions are in imperial and metric, and measured from finish to finish excluding construction tolerances. 2. All materials, dimensions, and drawings are approximate only. 3. Information is subject to change without notice, at developer's absolute discretion. 4. Actual area may vary from the stated area. 5. Drawings not to scale. 6. All images used are for illustrative purpose only and do not represent the actual size, features, specifications, fittings, and furnishings. 7. The developer reserves the right to make revisions / alterations, at it's a absolute discretion, without any liability whatsoever.

DUBAI CREEK  
HARBOUR

BAYSHORE AT  
CREEK BEACH

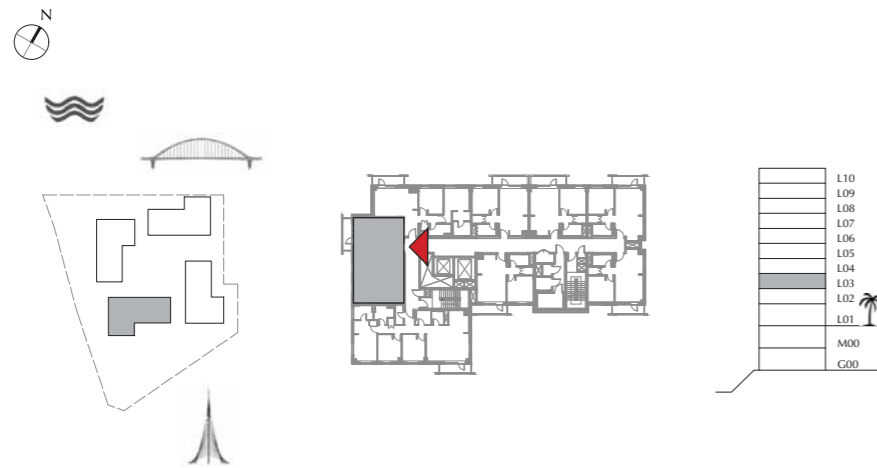
BUILDING 4

LEVEL 3

UNIT 307

2 BEDROOM

APARTMENT AREA	83.48 SQ.M.	898.57 SQ.FT.
BALCONY AREA	6.01 SQ.M.	64.69 SQ.FT.
TOTAL AREA	89.49 SQ.M.	963.26 SQ.FT.



FLOOR PLAN 1. All dimensions are in imperial and metric, and measured from finish to finish excluding construction tolerances. 2. All materials, dimensions, and drawings are approximate only. 3. Information is subject to change without notice, at developer's absolute discretion. 4. Actual area may vary from the stated area. 5. Drawings not to scale. 6. All images used are for illustrative purpose only and do not represent the actual size, features, specifications, fittings, and furnishings. 7. The developer reserves the right to make revisions / alterations, at its absolute discretion, without any liability whatsoever.

DUBAI CREEK  
HARBOUR

BAYSHORE AT  
CREEK BEACH

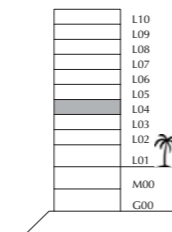
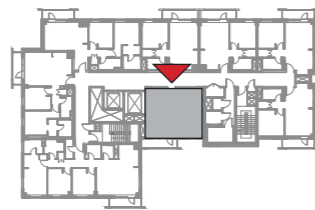
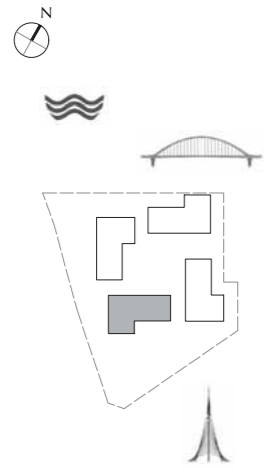
BUILDING 4

LEVEL 4

UNIT 401

1 BEDROOM

APARTMENT AREA	55.42 SQ.M.	596.54 SQ.FT.
BALCONY AREA	7.07 SQ.M.	76.10 SQ.FT.
TOTAL AREA	62.49 SQ.M.	672.64 SQ.FT.



FLOOR PLAN 1. All dimensions are in imperial and metric, and measured from finish to finish excluding construction tolerances. 2. All materials, dimensions, and drawings are approximate only. 3. Information is subject to change without notice, at developer's absolute discretion. 4. Actual area may vary from the stated area. 5. Drawings not to scale. 6. All images used are for illustrative purpose only and do not represent the actual size, features, specifications, fittings, and furnishings. 7. The developer reserves the right to make revisions / alterations, at it's a absolute discretion, without any liability whatsoever.

DUBAI CREEK  
HARBOUR

BAYSHORE AT  
CREEK BEACH

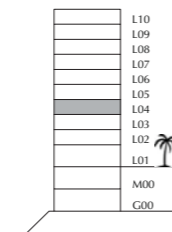
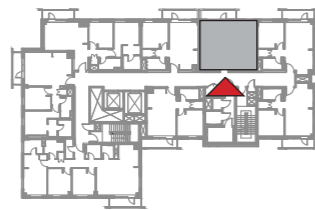
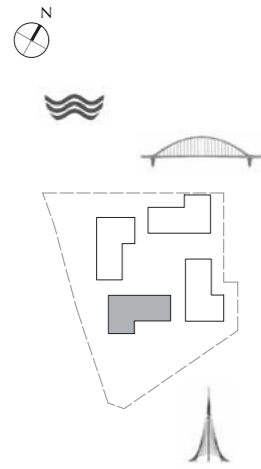
BUILDING 4

LEVEL 4

UNIT 404

1 BEDROOM

APARTMENT AREA	55.10 SQ.M.	593.09 SQ.FT.
BALCONY AREA	6.78 SQ.M.	72.98 SQ.FT.
TOTAL AREA	61.88 SQ.M.	666.07 SQ.FT.



FLOOR PLAN 1. All dimensions are in imperial and metric, and measured from finish to finish excluding construction tolerances. 2. All materials, dimensions, and drawings are approximate only. 3. Information is subject to change without notice, at developer's absolute discretion. 4. Actual area may vary from the stated area. 5. Drawings not to scale. 6. All images used are for illustrative purpose only and do not represent the actual size, features, specifications, fittings, and furnishings. 7. The developer reserves the right to make revisions / alterations, at it's a absolute discretion, without any liability whatsoever.

DUBAI CREEK  
HARBOUR

BAYSHORE AT  
CREEK BEACH

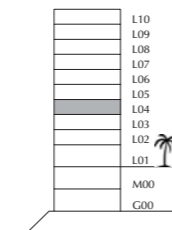
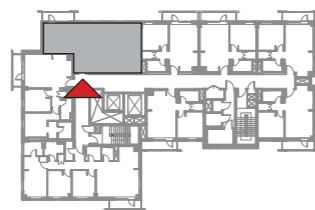
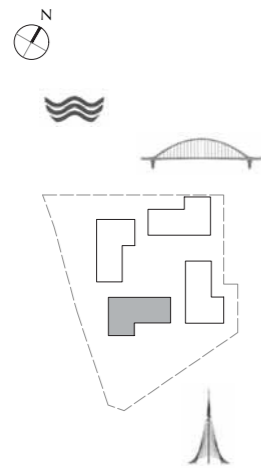
BUILDING 4

LEVEL 4

UNIT 406

2 BEDROOM

APARTMENT AREA	82.73 SQ.M.	890.50 SQ.FT.
BALCONY AREA	6.01 SQ.M.	64.69 SQ.FT.
TOTAL AREA	88.74 SQ.M.	955.19 SQ.FT.



FLOOR PLAN 1. All dimensions are in imperial and metric, and measured from finish to finish excluding construction tolerances. 2. All materials, dimensions, and drawings are approximate only. 3. Information is subject to change without notice, at developer's absolute discretion. 4. Actual area may vary from the stated area. 5. Drawings not to scale. 6. All images used are for illustrative purpose only and do not represent the actual size, features, specifications, fittings, and furnishings. 7. The developer reserves the right to make revisions / alterations, at it's a absolute discretion, without any liability whatsoever.

DUBAI CREEK  
HARBOUR

BAYSHORE AT  
CREEK BEACH

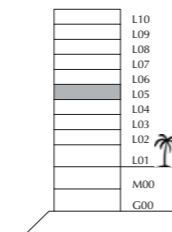
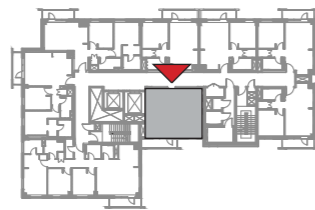
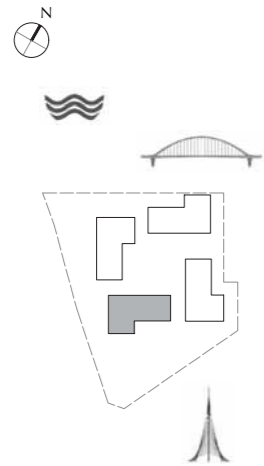
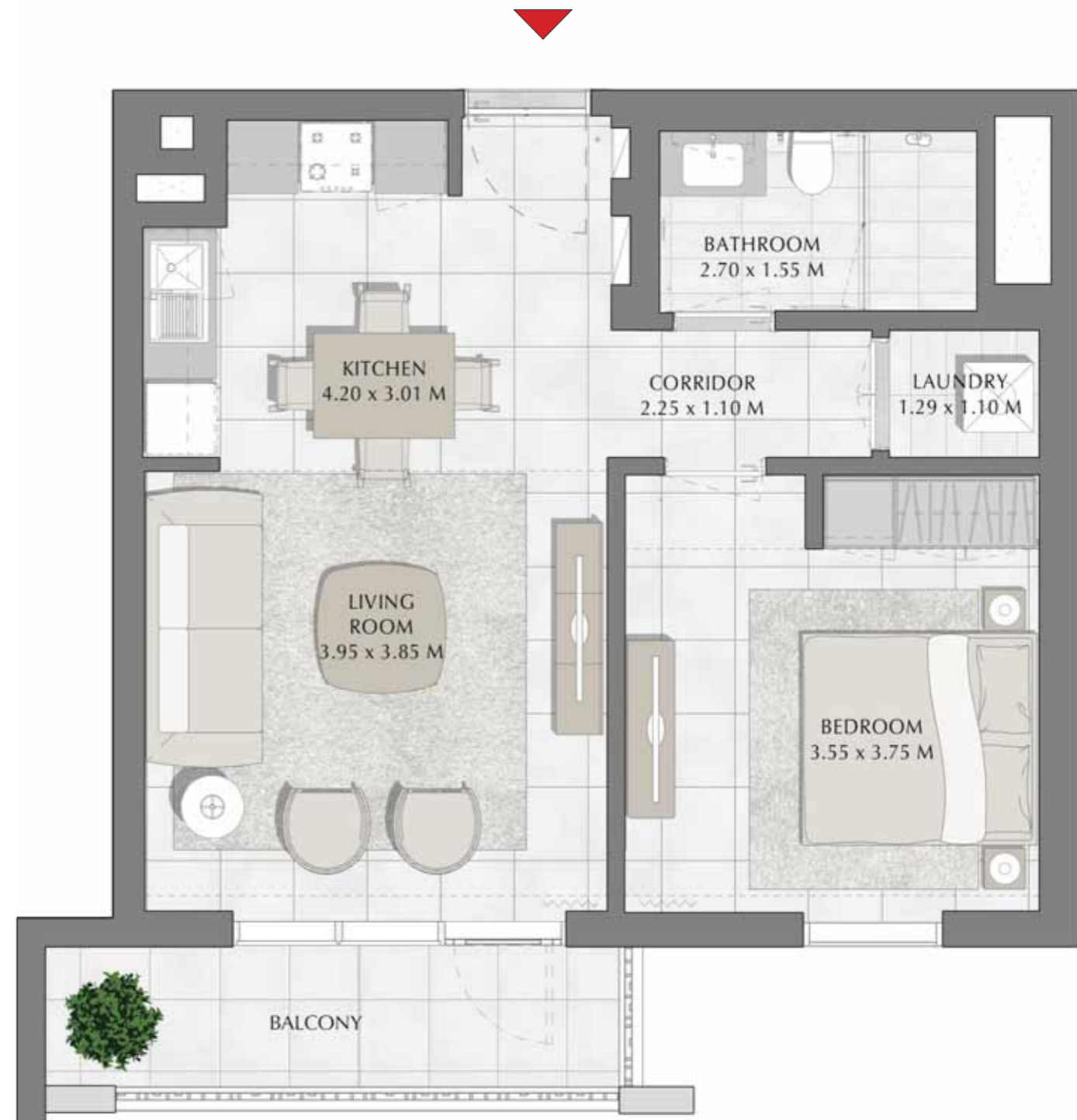
BUILDING 4

LEVEL 5

UNIT 501

1 BEDROOM

APARTMENT AREA	55.42 SQ.M.	596.54 SQ.FT.
BALCONY AREA	7.07 SQ.M.	76.10 SQ.FT.
TOTAL AREA	62.49 SQ.M.	672.64 SQ.FT.



FLOOR PLAN 1. All dimensions are in imperial and metric, and measured from finish to finish excluding construction tolerances. 2. All materials, dimensions, and drawings are approximate only. 3. Information is subject to change without notice, at developer's absolute discretion. 4. Actual area may vary from the stated area. 5. Drawings not to scale. 6. All images used are for illustrative purpose only and do not represent the actual size, features, specifications, fittings, and furnishings. 7. The developer reserves the right to make revisions / alterations, at it's a absolute discretion, without any liability whatsoever.

DUBAI CREEK  
HARBOUR

BAYSHORE AT  
CREEK BEACH

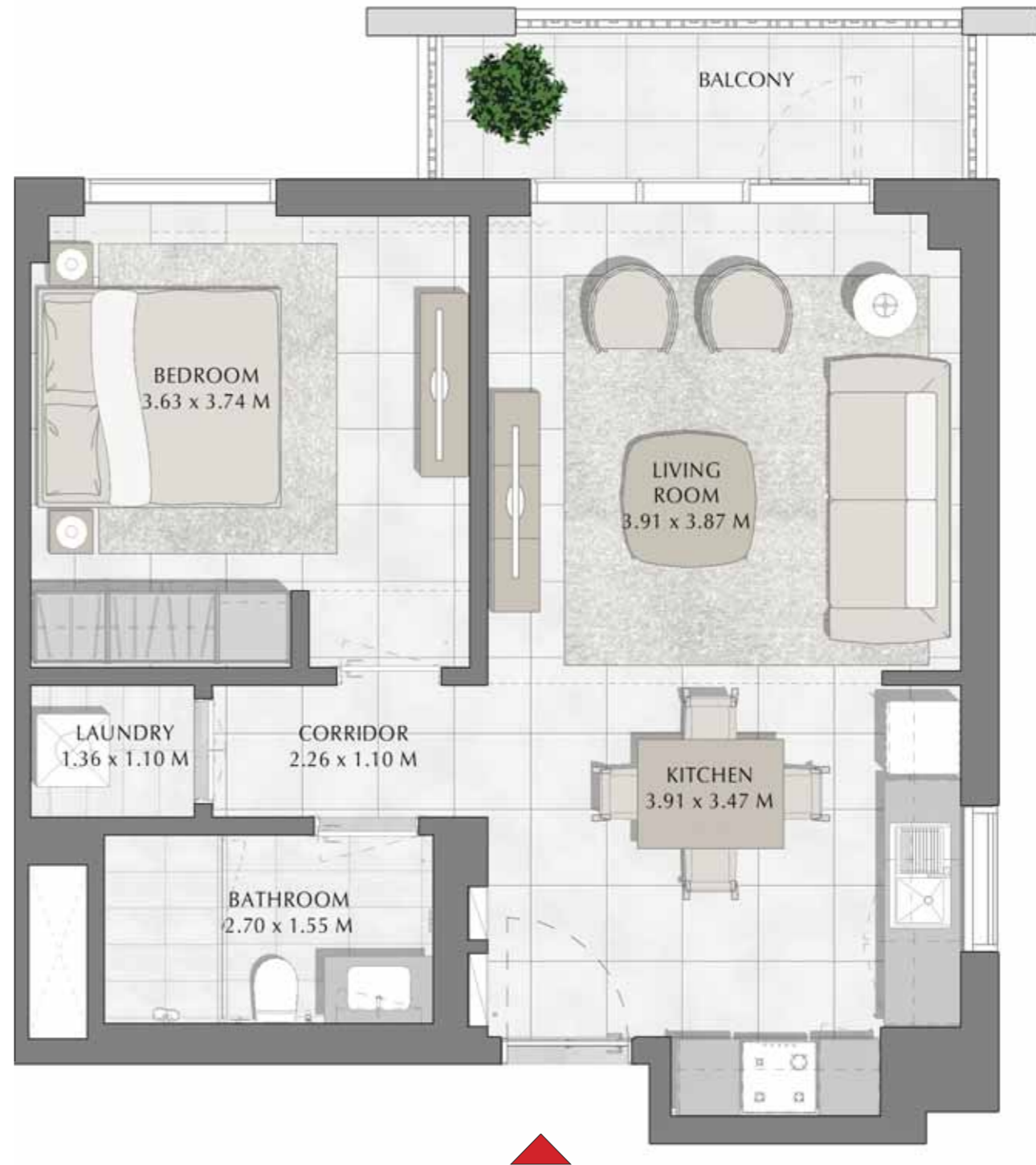
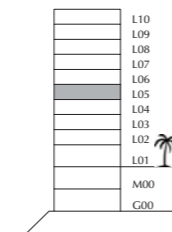
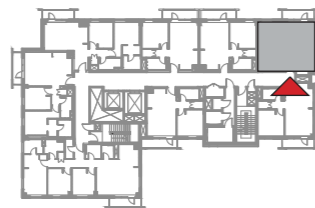
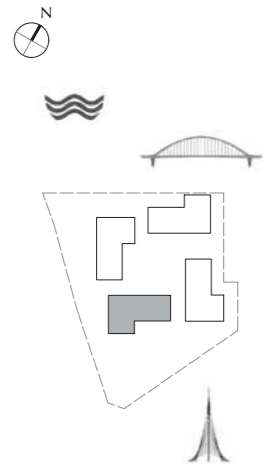
BUILDING 4

LEVEL 5

UNIT 503

1 BEDROOM

APARTMENT AREA	56.60 SQ.M.	609.24 SQ.FT.
BALCONY AREA	6.01 SQ.M.	64.69 SQ.FT.
TOTAL AREA	62.61 SQ.M.	673.93 SQ.FT.



FLOOR PLAN 1. All dimensions are in imperial and metric, and measured from finish to finish excluding construction tolerances. 2. All materials, dimensions, and drawings are approximate only. 3. Information is subject to change without notice, at developer's absolute discretion. 4. Actual area may vary from the stated area. 5. Drawings not to scale. 6. All images used are for illustrative purpose only and do not represent the actual size, features, specifications, fittings, and furnishings. 7. The developer reserves the right to make revisions / alterations, at its absolute discretion, without any liability whatsoever.

DUBAI CREEK  
HARBOUR

BAYSHORE AT  
CREEK BEACH

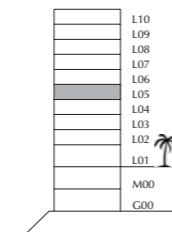
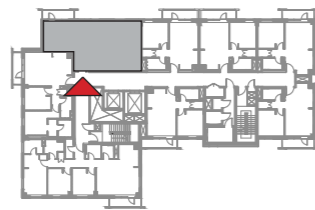
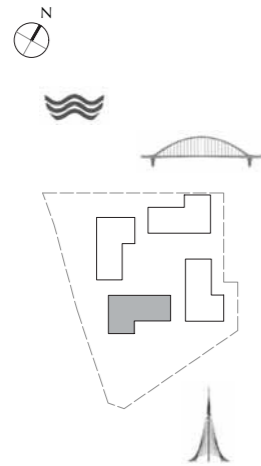
BUILDING 4

LEVEL 5

UNIT 506

2 BEDROOM

APARTMENT AREA	82.73 SQ.M.	890.50 SQ.FT.
BALCONY AREA	6.01 SQ.M.	64.69 SQ.FT.
TOTAL AREA	88.74 SQ.M.	955.19 SQ.FT.



FLOOR PLAN 1. All dimensions are in imperial and metric, and measured from finish to finish excluding construction tolerances. 2. All materials, dimensions, and drawings are approximate only. 3. Information is subject to change without notice, at developer's absolute discretion. 4. Actual area may vary from the stated area. 5. Drawings not to scale. 6. All images used are for illustrative purpose only and do not represent the actual size, features, specifications, fittings, and finishings. 7. The developer reserves the right to make revisions / alterations, at its absolute discretion, without any liability whatsoever.



DUBAI CREEK  
HARBOUR

BAYSHORE AT  
CREEK BEACH

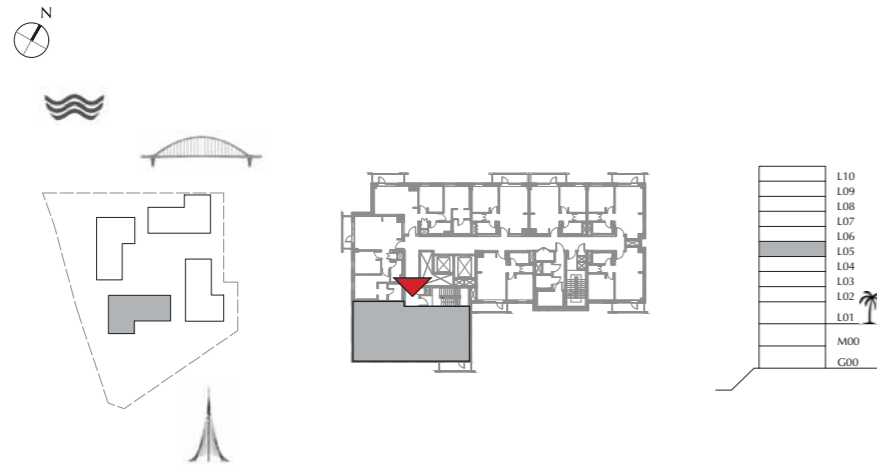
BUILDING 4

LEVEL 5

UNIT 508

3 BEDROOM

APARTMENT AREA	123.69 SQ.M.	1331.39 SQ.FT.
BALCONY AREA	6.01 SQ.M.	64.69 SQ.FT.
TOTAL AREA	129.70 SQ.M.	1396.08 SQ.FT.



FLOOR PLAN 1. All dimensions are in imperial and metric, and measured from finish to finish excluding construction tolerances. 2. All materials, dimensions, and drawings are approximate only. 3. Information is subject to change without notice, at developer's absolute discretion. 4. Actual area may vary from the stated area. 5. Drawings not to scale. 6. All images used are for illustrative purpose only and do not represent the actual size, features, specifications, fittings, and furnishings. 7. The developer reserves the right to make revisions / alterations, at its absolute discretion, without any liability whatsoever.

DUBAI CREEK  
HARBOUR

BAYSHORE AT  
CREEK BEACH

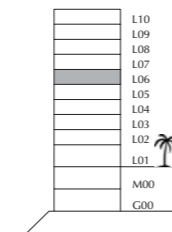
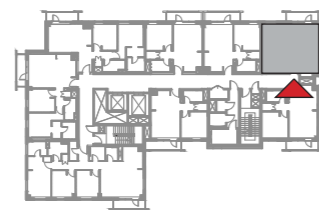
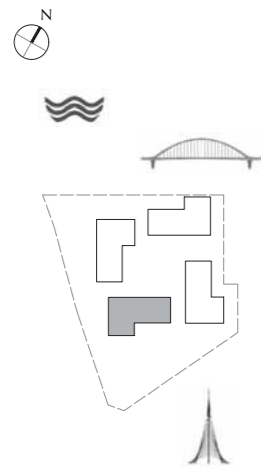
BUILDING 4

LEVEL 6

UNIT 603

1 BEDROOM

APARTMENT AREA	56.60 SQ.M.	609.24 SQ.FT.
BALCONY AREA	6.01 SQ.M.	64.69 SQ.FT.
TOTAL AREA	62.61 SQ.M.	673.93 SQ.FT.



FLOOR PLAN 1. All dimensions are in imperial and metric, and measured from finish to finish excluding construction tolerances. 2. All materials, dimensions, and drawings are approximate only. 3. Information is subject to change without notice, at developer's absolute discretion. 4. Actual area may vary from the stated area. 5. Drawings not to scale. 6. All images used are for illustrative purpose only and do not represent the actual size, features, specifications, fittings, and furnishings. 7. The developer reserves the right to make revisions / alterations, at its absolute discretion, without any liability whatsoever.

DUBAI CREEK  
HARBOUR

BAYSHORE AT  
CREEK BEACH

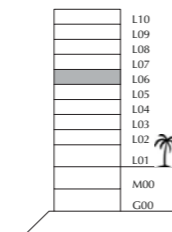
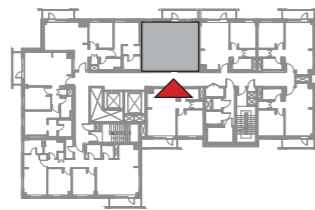
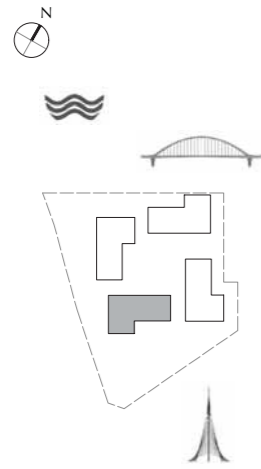
BUILDING 4

LEVEL 6

UNIT 605

1 BEDROOM

APARTMENT AREA	55.01 SQ.M.	592.12 SQ.FT.
BALCONY AREA	6.78 SQ.M.	72.98 SQ.FT.
TOTAL AREA	61.79 SQ.M.	665.10 SQ.FT.



FLOOR PLAN 1. All dimensions are in imperial and metric, and measured from finish to finish excluding construction tolerances. 2. All materials, dimensions, and drawings are approximate only. 3. Information is subject to change without notice, at developer's absolute discretion. 4. Actual area may vary from the stated area. 5. Drawings not to scale. 6. All images used are for illustrative purpose only and do not represent the actual size, features, specifications, fittings, and furnishings. 7. The developer reserves the right to make revisions / alterations, at its absolute discretion, without any liability whatsoever.

DUBAI CREEK  
HARBOUR

BAYSHORE AT  
CREEK BEACH

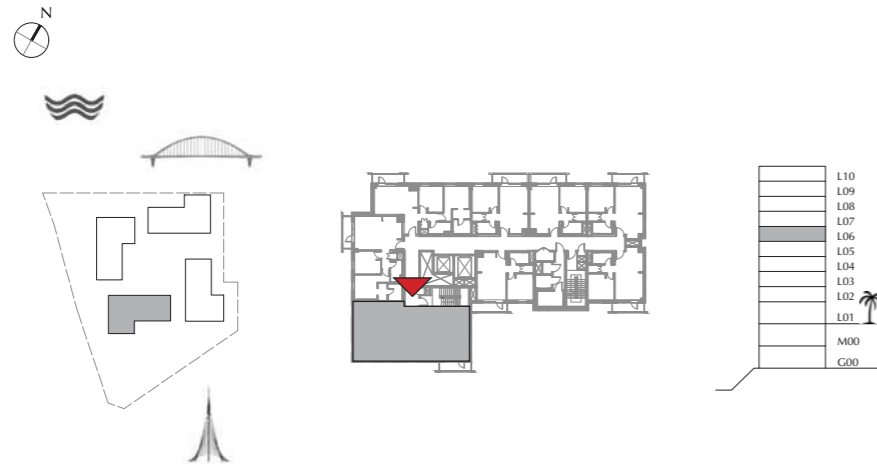
BUILDING 4

LEVEL 6

UNIT 608

3 BEDROOM

APARTMENT AREA	123.75 SQ.M.	1332.03 SQ.FT.
BALCONY AREA	6.01 SQ.M.	64.69 SQ.FT.
TOTAL AREA	129.76 SQ.M.	1396.72 SQ.FT.



FLOOR PLAN 1. All dimensions are in imperial and metric, and measured from finish to finish excluding construction tolerances. 2. All materials, dimensions, and drawings are approximate only. 3. Information is subject to change without notice, at developer's absolute discretion. 4. Actual area may vary from the stated area. 5. Drawings not to scale. 6. All images used are for illustrative purpose only and do not represent the actual size, features, specifications, fittings, and furnishings. 7. The developer reserves the right to make revisions / alterations, at its absolute discretion, without any liability whatsoever.

DUBAI CREEK  
HARBOUR

BAYSHORE AT  
CREEK BEACH

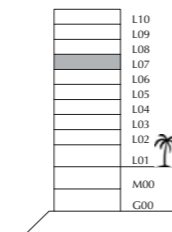
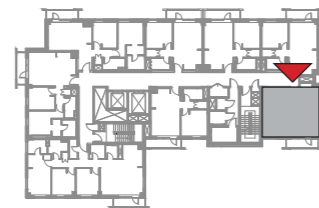
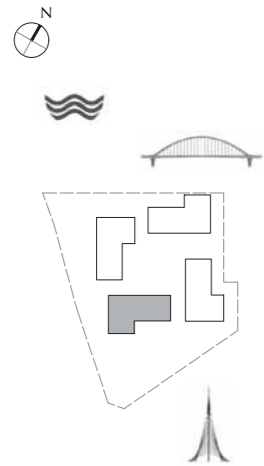
BUILDING 4

LEVEL 7

UNIT 702

1 BEDROOM

APARTMENT AREA	57.00 SQ.M.	613.54 SQ.FT.
BALCONY AREA	6.01 SQ.M.	64.69 SQ.FT.
TOTAL AREA	63.01 SQ.M.	678.23 SQ.FT.



FLOOR PLAN 1. All dimensions are in imperial and metric, and measured from finish to finish excluding construction tolerances. 2. All materials, dimensions, and drawings are approximate only. 3. Information is subject to change without notice, at developer's absolute discretion. 4. Actual area may vary from the stated area. 5. Drawings not to scale. 6. All images used are for illustrative purpose only and do not represent the actual size, features, specifications, fittings, and furnishings. 7. The developer reserves the right to make revisions / alterations, at it's a absolute discretion, without any liability whatsoever.

DUBAI CREEK  
HARBOUR

BAYSHORE AT  
CREEK BEACH

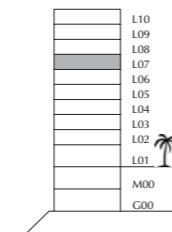
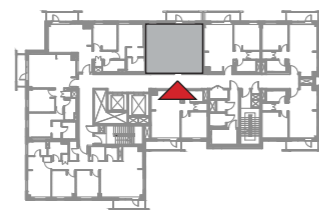
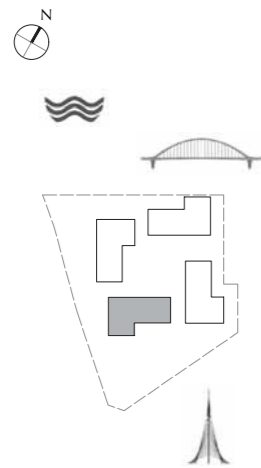
BUILDING 4

LEVEL 7

UNIT 705

1 BEDROOM

APARTMENT AREA	55.01 SQ.M.	592.12 SQ.FT.
BALCONY AREA	6.78 SQ.M.	72.98 SQ.FT.
TOTAL AREA	61.79 SQ.M.	665.10 SQ.FT.



FLOOR PLAN 1. All dimensions are in imperial and metric, and measured from finish to finish excluding construction tolerances. 2. All materials, dimensions, and drawings are approximate only. 3. Information is subject to change without notice, at developer's absolute discretion. 4. Actual area may vary from the stated area. 5. Drawings not to scale. 6. All images used are for illustrative purpose only and do not represent the actual size, features, specifications, fittings, and furnishings. 7. The developer reserves the right to make revisions / alterations, at its absolute discretion, without any liability whatsoever.

DUBAI CREEK  
HARBOUR

BAYSHORE AT  
CREEK BEACH

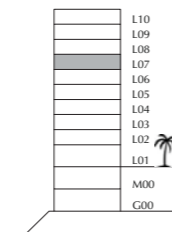
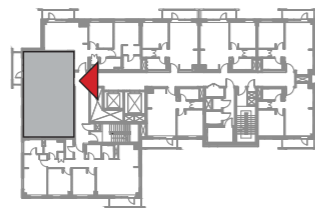
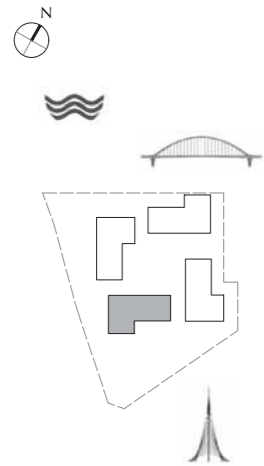
BUILDING 4

LEVEL 7

UNIT 707

2 BEDROOM

APARTMENT AREA	83.54 SQ.M.	899.22 SQ.FT.
BALCONY AREA	5.91 SQ.M.	63.61 SQ.FT.
TOTAL AREA	89.45 SQ.M.	962.83 SQ.FT.



FLOOR PLAN 1. All dimensions are in imperial and metric, and measured from finish to finish excluding construction tolerances. 2. All materials, dimensions, and drawings are approximate only. 3. Information is subject to change without notice, at developer's absolute discretion. 4. Actual area may vary from the stated area. 5. Drawings not to scale. 6. All images used are for illustrative purpose only and do not represent the actual size, features, specifications, fittings, and furnishings. 7. The developer reserves the right to make revisions / alterations, at its absolute discretion, without any liability whatsoever.

DUBAI CREEK  
HARBOUR

BAYSHORE AT  
CREEK BEACH

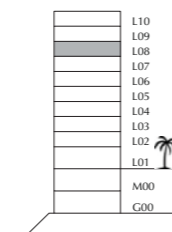
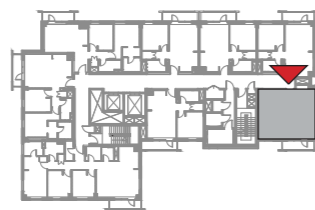
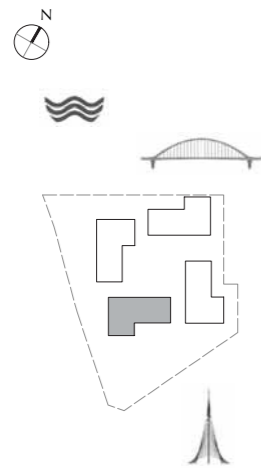
BUILDING 4

LEVEL 8

UNIT 802

1 BEDROOM

APARTMENT AREA	57.00 SQ.M.	613.54 SQ.FT.
BALCONY AREA	6.01 SQ.M.	64.69 SQ.FT.
TOTAL AREA	63.01 SQ.M.	678.23 SQ.FT.



FLOOR PLAN 1. All dimensions are in imperial and metric, and measured from finish to finish excluding construction tolerances. 2. All materials, dimensions, and drawings are approximate only. 3. Information is subject to change without notice, at developer's absolute discretion. 4. Actual area may vary from the stated area. 5. Drawings not to scale. 6. All images used are for illustrative purpose only and do not represent the actual size, features, specifications, fittings, and furnishings. 7. The developer reserves the right to make revisions / alterations, at its absolute discretion, without any liability whatsoever.



DUBAI CREEK  
HARBOUR

BAYSHORE AT  
CREEK BEACH

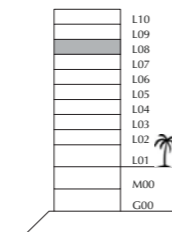
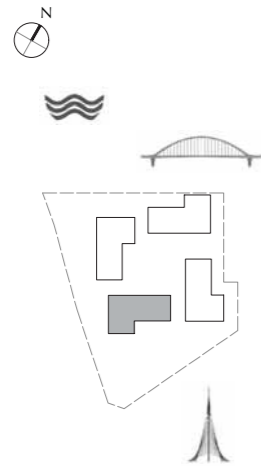
BUILDING 4

LEVEL 8

UNIT 804

1 BEDROOM

APARTMENT AREA	55.10 SQ.M.	593.09 SQ.FT.
BALCONY AREA	6.78 SQ.M.	72.98 SQ.FT.
TOTAL AREA	61.88 SQ.M.	666.07 SQ.FT.



FLOOR PLAN 1. All dimensions are in imperial and metric, and measured from finish to finish excluding construction tolerances. 2. All materials, dimensions, and drawings are approximate only. 3. Information is subject to change without notice, at developer's absolute discretion. 4. Actual area may vary from the stated area. 5. Drawings not to scale. 6. All images used are for illustrative purpose only and do not represent the actual size, features, specifications, fittings, and furnishings. 7. The developer reserves the right to make revisions / alterations, at it's a absolute discretion, without any liability whatsoever.

DUBAI CREEK  
HARBOUR

BAYSHORE AT  
CREEK BEACH

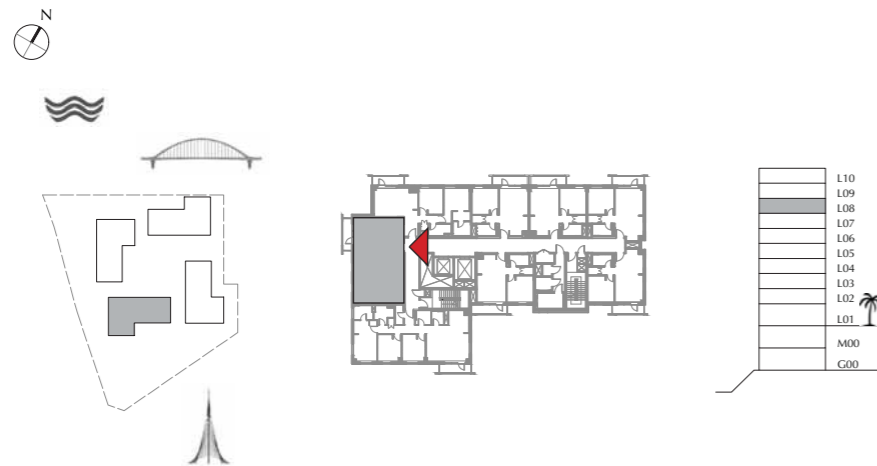
BUILDING 4

LEVEL 8

UNIT 807

2 BEDROOM

APARTMENT AREA	83.48 SQ.M.	898.57 SQ.FT.
BALCONY AREA	6.01 SQ.M.	64.69 SQ.FT.
TOTAL AREA	89.49 SQ.M.	963.26 SQ.FT.



FLOOR PLAN 1. All dimensions are in imperial and metric, and measured from finish to finish excluding construction tolerances. 2. All materials, dimensions, and drawings are approximate only. 3. Information is subject to change without notice, at developer's absolute discretion. 4. Actual area may vary from the stated area. 5. Drawings not to scale. 6. All images used are for illustrative purpose only and do not represent the actual size, features, specifications, fittings, and furnishings. 7. The developer reserves the right to make revisions / alterations, at its absolute discretion, without any liability whatsoever.

DUBAI CREEK  
HARBOUR

BAYSHORE AT  
CREEK BEACH

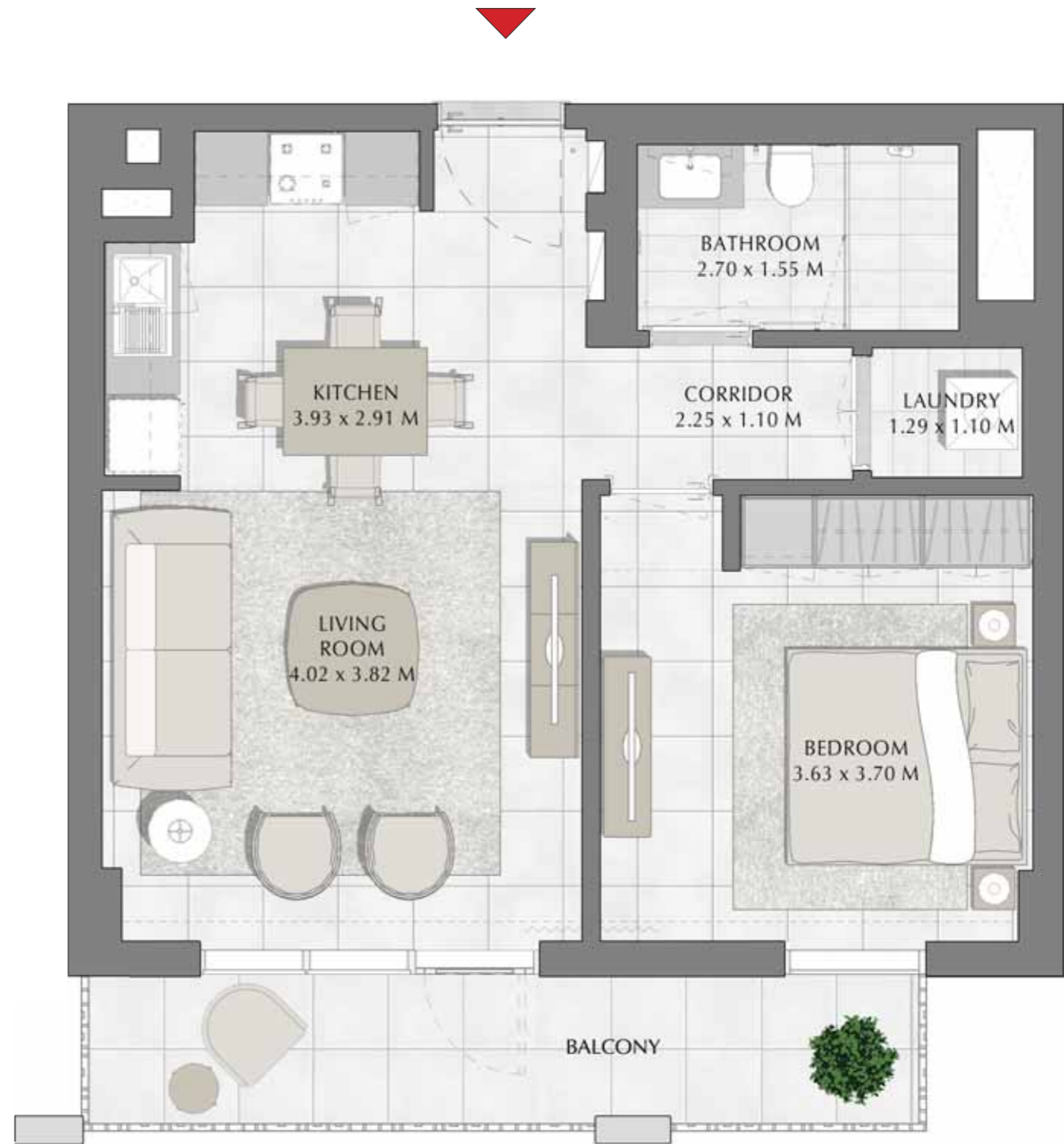
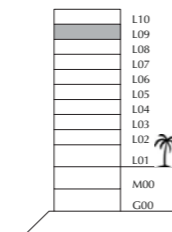
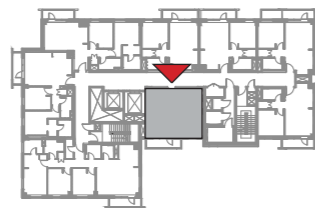
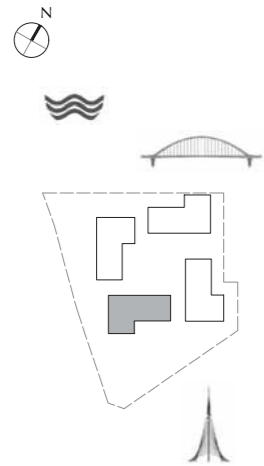
BUILDING 4

LEVEL 9

UNIT 901

1 BEDROOM

APARTMENT AREA	55.42 SQ.M.	596.54 SQ.FT.
BALCONY AREA	9.53 SQ.M.	102.58 SQ.FT.
TOTAL AREA	64.95 SQ.M.	699.12 SQ.FT.



FLOOR PLAN 1. All dimensions are in imperial and metric, and measured from finish to finish excluding construction tolerances. 2. All materials, dimensions, and drawings are approximate only. 3. Information is subject to change without notice, at developer's absolute discretion. 4. Actual area may vary from the stated area. 5. Drawings not to scale. 6. All images used are for illustrative purpose only and do not represent the actual size, features, specifications, fittings, and furnishings. 7. The developer reserves the right to make revisions / alterations, at it's a absolute discretion, without any liability whatsoever.

DUBAI CREEK  
HARBOUR

BAYSHORE AT  
CREEK BEACH

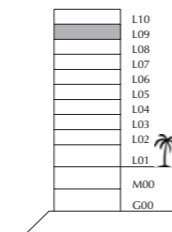
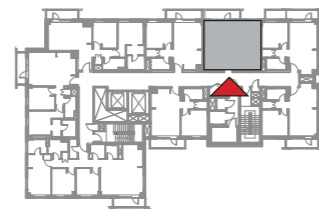
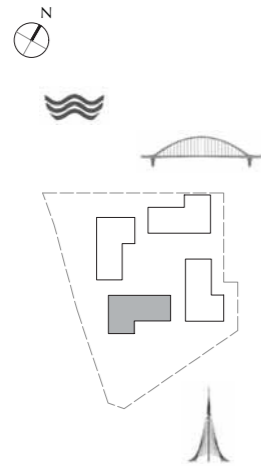
BUILDING 4

LEVEL 9

UNIT 904

1 BEDROOM

APARTMENT AREA	55.10 SQ.M.	593.09 SQ.FT.
BALCONY AREA	6.78 SQ.M.	72.98 SQ.FT.
TOTAL AREA	61.88 SQ.M.	666.07 SQ.FT.



FLOOR PLAN 1. All dimensions are in imperial and metric, and measured from finish to finish excluding construction tolerances. 2. All materials, dimensions, and drawings are approximate only. 3. Information is subject to change without notice, at developer's absolute discretion. 4. Actual area may vary from the stated area. 5. Drawings not to scale. 6. All images used are for illustrative purpose only and do not represent the actual size, features, specifications, fittings, and furnishings. 7. The developer reserves the right to make revisions / alterations, at it's a absolute discretion, without any liability whatsoever.

DUBAI CREEK  
HARBOUR

BAYSHORE AT  
CREEK BEACH

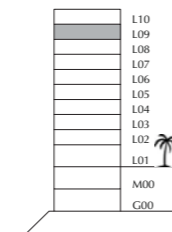
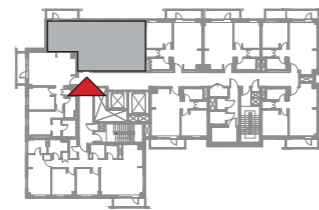
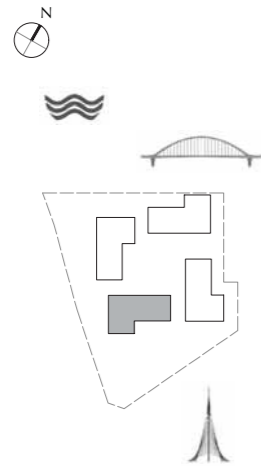
BUILDING 4

LEVEL 9

UNIT 906

2 BEDROOM

APARTMENT AREA	82.60 SQ.M.	889.10 SQ.FT.
BALCONY AREA	6.01 SQ.M.	64.69 SQ.FT.
TOTAL AREA	88.61 SQ.M.	953.79 SQ.FT.



FLOOR PLAN 1. All dimensions are in imperial and metric, and measured from finish to finish excluding construction tolerances. 2. All materials, dimensions, and drawings are approximate only. 3. Information is subject to change without notice, at developer's absolute discretion. 4. Actual area may vary from the stated area. 5. Drawings not to scale. 6. All images used are for illustrative purpose only and do not represent the actual size, features, specifications, fittings, and furnishings. 7. The developer reserves the right to make revisions / alterations, at its absolute discretion, without any liability whatsoever.

DUBAI CREEK  
HARBOUR

BAYSHORE AT  
CREEK BEACH

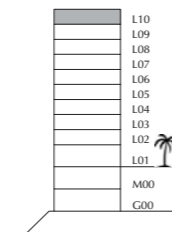
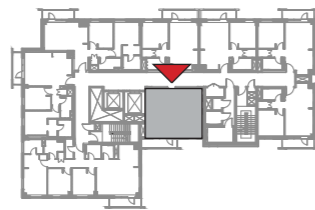
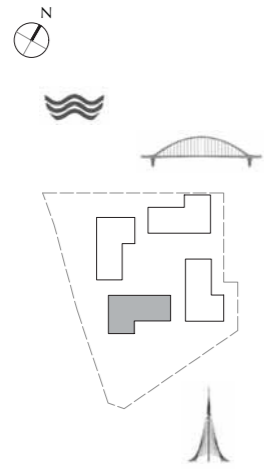
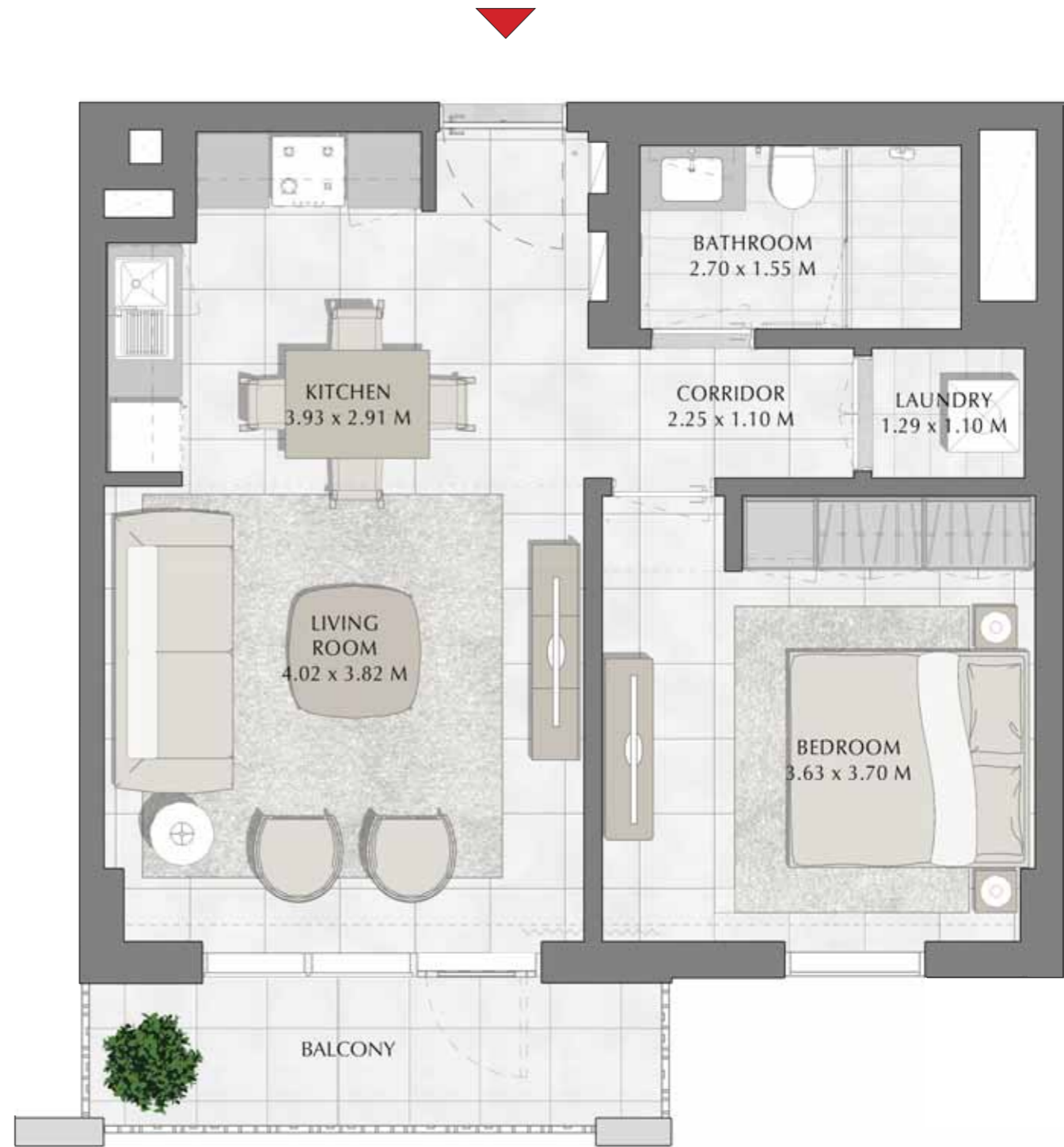
BUILDING 4

LEVEL 10

UNIT 1001

1 BEDROOM

APARTMENT AREA	55.42 SQ.M.	596.54 SQ.FT.
BALCONY AREA	6.59 SQ.M.	70.93 SQ.FT.
TOTAL AREA	62.01 SQ.M.	667.47 SQ.FT.



FLOOR PLAN 1. All dimensions are in imperial and metric, and measured from finish to finish excluding construction tolerances. 2. All materials, dimensions, and drawings are approximate only. 3. Information is subject to change without notice, at developer's absolute discretion. 4. Actual area may vary from the stated area. 5. Drawings not to scale. 6. All images used are for illustrative purpose only and do not represent the actual size, features, specifications, fittings, and furnishings. 7. The developer reserves the right to make revisions / alterations, at its absolute discretion, without any liability whatsoever.

DUBAI CREEK  
HARBOUR

BAYSHORE AT  
CREEK BEACH

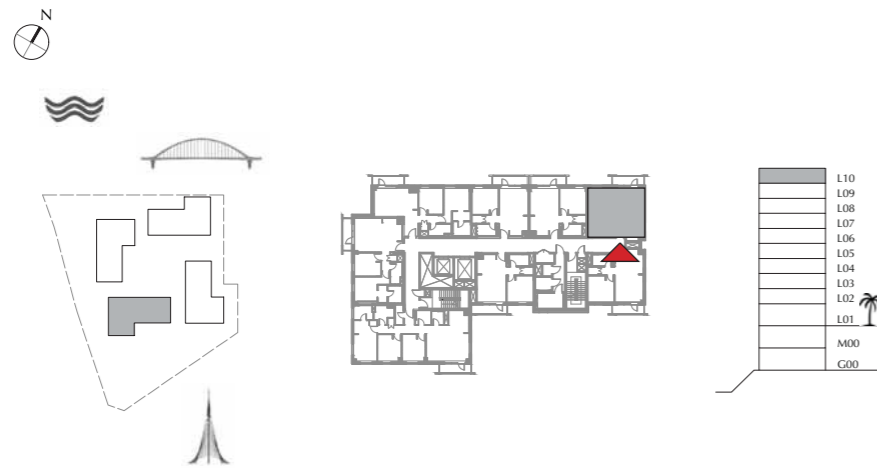
BUILDING 4

LEVEL 10

UNIT 1003

1 BEDROOM

APARTMENT AREA	56.60 SQ.M.	609.24 SQ.FT.
BALCONY AREA	10.04 SQ.M.	108.07 SQ.FT.
TOTAL AREA	66.64 SQ.M.	717.31 SQ.FT.



FLOOR PLAN 1. All dimensions are in imperial and metric, and measured from finish to finish excluding construction tolerances. 2. All materials, dimensions, and drawings are approximate only. 3. Information is subject to change without notice, at developer's absolute discretion. 4. Actual area may vary from the stated area. 5. Drawings not to scale. 6. All images used are for illustrative purpose only and do not represent the actual size, features, specifications, fittings, and furnishings. 7. The developer reserves the right to make revisions / alterations, at it's a absolute discretion, without any liability whatsoever.

DUBAI CREEK  
HARBOUR

BAYSHORE AT  
CREEK BEACH

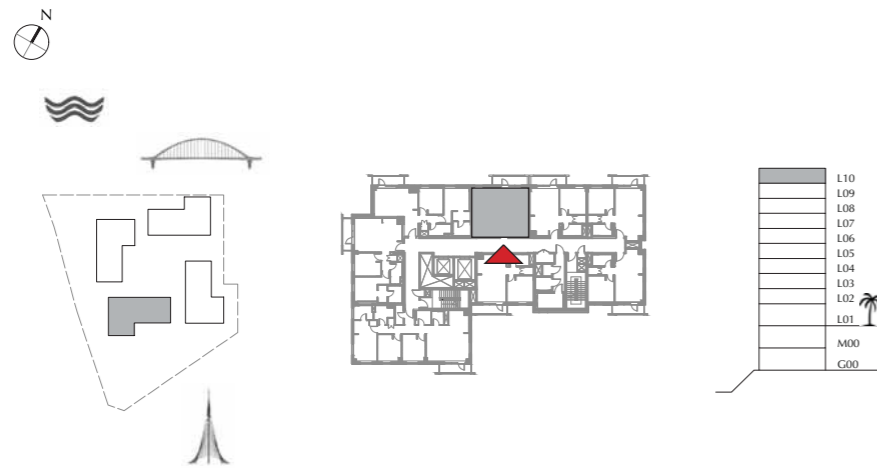
BUILDING 4

LEVEL 10

UNIT 1005

1 BEDROOM

APARTMENT AREA	54.95 SQ.M.	591.48 SQ.FT.
BALCONY AREA	6.88 SQ.M.	74.06 SQ.FT.
TOTAL AREA	61.83 SQ.M.	665.54 SQ.FT.



FLOOR PLAN 1. All dimensions are in imperial and metric, and measured from finish to finish excluding construction tolerances. 2. All materials, dimensions, and drawings are approximate only. 3. Information is subject to change without notice, at developer's absolute discretion. 4. Actual area may vary from the stated area. 5. Drawings not to scale. 6. All images used are for illustrative purpose only and do not represent the actual size, features, specifications, fittings, and furnishings. 7. The developer reserves the right to make revisions / alterations, at its absolute discretion, without any liability whatsoever.



DUBAI CREEK  
HARBOUR

BAYSHORE AT  
CREEK BEACH

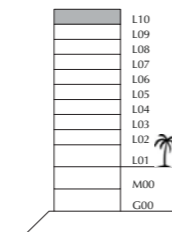
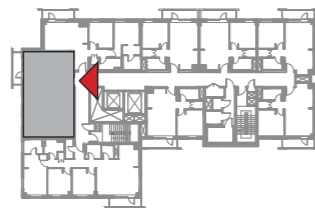
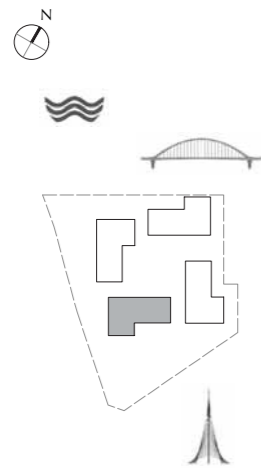
BUILDING 4

LEVEL 10

UNIT 1007

2 BEDROOM

APARTMENT AREA	83.54 SQ.M.	889.22 SQ.FT.
BALCONY AREA	6.01 SQ.M.	64.69 SQ.FT.
TOTAL AREA	89.55 SQ.M.	963.91 SQ.FT.



FLOOR PLAN 1. All dimensions are in imperial and metric, and measured from finish to finish excluding construction tolerances. 2. All materials, dimensions, and drawings are approximate only. 3. Information is subject to change without notice, at developer's absolute discretion. 4. Actual area may vary from the stated area. 5. Drawings not to scale. 6. All images used are for illustrative purpose only and do not represent the actual size, features, specifications, fittings, and furnishings. 7. The developer reserves the right to make revisions / alterations, at its absolute discretion, without any liability whatsoever.



# TOTALLY HOME

REAL ESTATE



[totallyhomerealestate](#)



[totallyhomerealestate](#)



[totallyhomerealestate](#)



[totallyhomerealestate.com](#)

---

+971 54 289 7686    [sales@totallyhomerealestate.com](mailto:sales@totallyhomerealestate.com)

[support@totallyhomerealestate.com](mailto:support@totallyhomerealestate.com)    [admin@totallyhomerealestate.com](mailto:admin@totallyhomerealestate.com)

Office 103, Building 6 Bay Square Tower, Business Bay PO Box 418317, Dubai