

# Luma Park Views



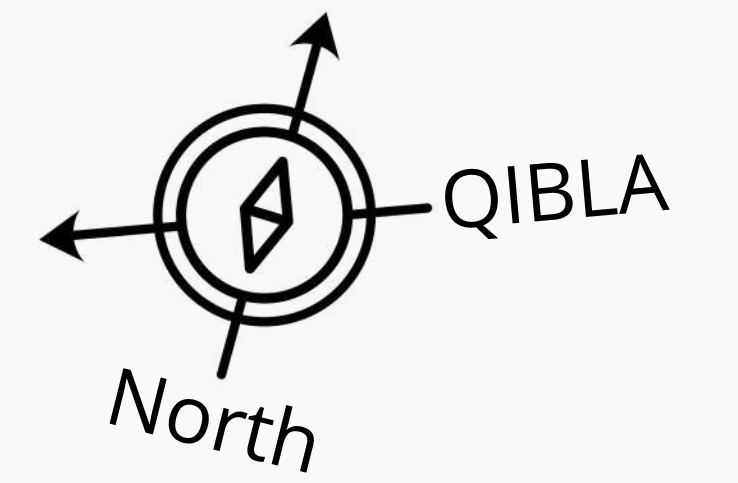
Premium  
Apartments  
Circle, Dubai

Residential  
Jumeirah Village

a project by



# Typical floor plan



- One Bedroom Apartment
- Two Bedrooms Apartment
- Three Bedrooms Apartment

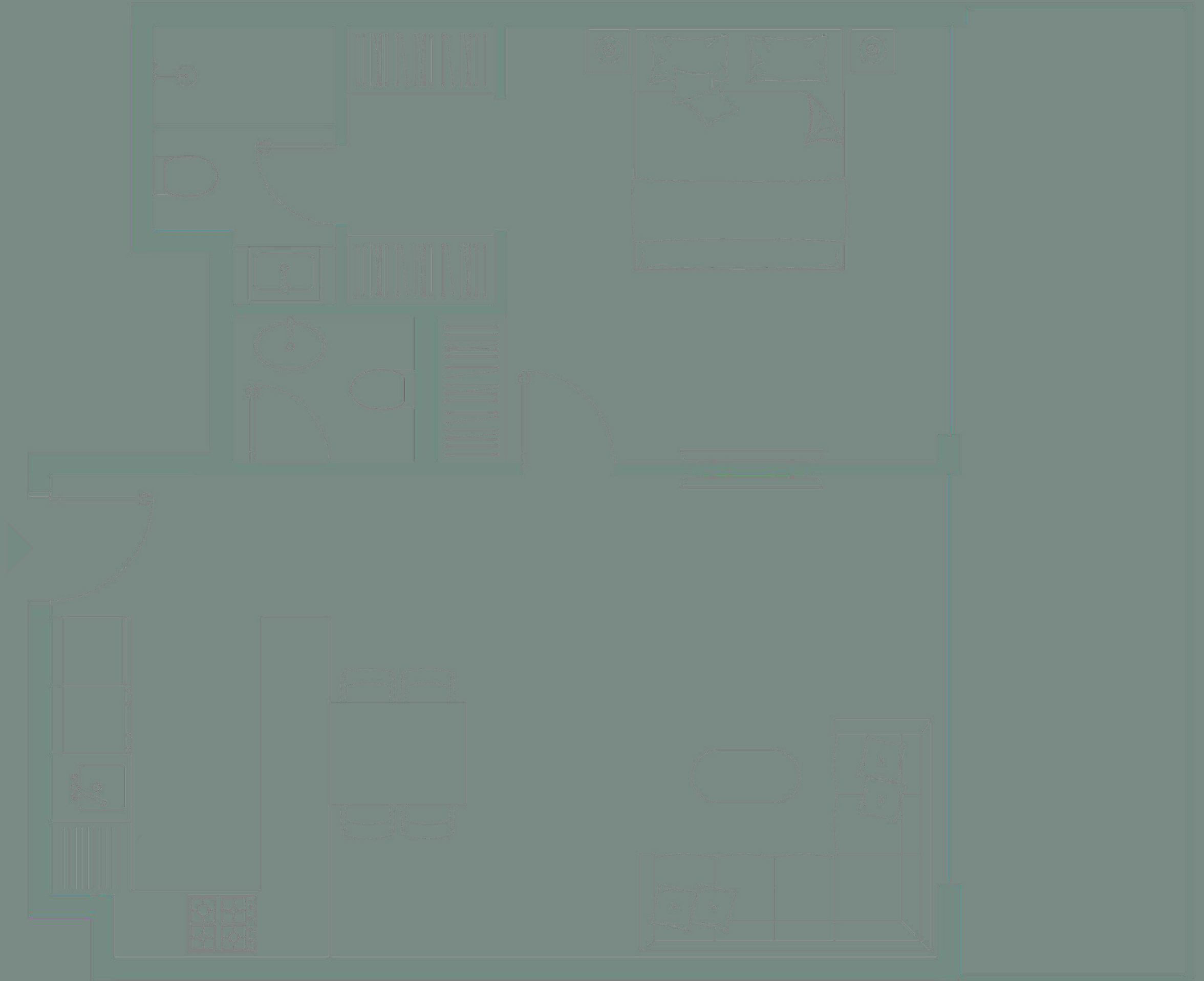
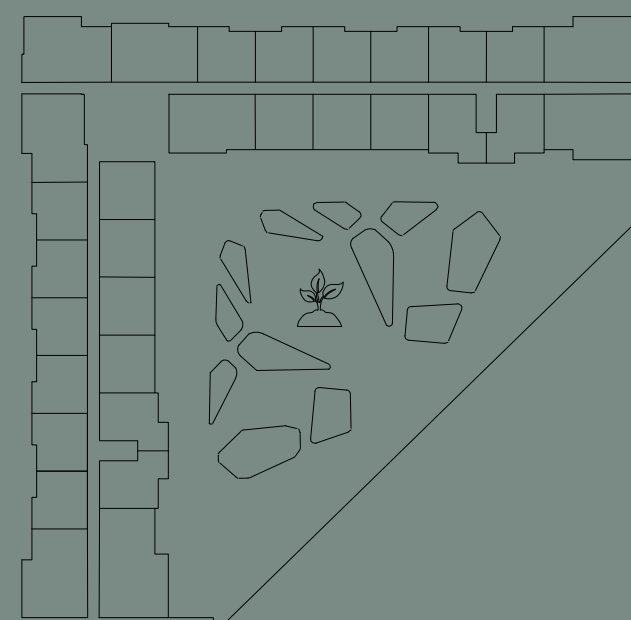
# One bedroom apartment - Type A

## General

- Approx. 3.1m clear ceiling height in principal rooms
- High performance floor to ceiling double glazing window systems
- Built in heat/smoke detectors and in-suite water sprinkler system
- Individual apartment water, electricity, cooling, gas metering
- One car parking space included
- Unit Size: 861.00 - 879.52 sqft

## Finishes

- Flooring: porcelain tiles, matte finish, timber effect
- Custom designed fire resistant entry door with electronic smart lock
- Laminated modern interior doors with magnetic door hardwares
- Custom designed contemporary kitchen cabinetry, in a white colour
- Quartz worktop, glass backsplash, undermount sink with mixer
- Custom designed contemporary built in wardrobes
- Built in appliances: Siemens (or equivalent) refrigerator, dishwasher, washing machine, gas oven, gas hob, extraction hood
- Bathroom sanitaryware, faucets and accessories: Grohe, Geberit, Vitra (or equivalent)



# One bedroom apartment – Type B

## General

Approx. 3.1m clear ceiling height in principal rooms

High performance floor to ceiling double glazing window systems

Built in heat/smoke detectors and in-suite water sprinkler system Individual apartment water, electricity, cooling, gas metering

One car parking space included

Unit Size: from 838.29 to 849.16 sqft

## Finishes

Flooring: porcelain tiles, matte finish, timber effect

Custom designed fire resistant entry door with electronic smart lock

Laminated modern interior doors with magnetic door hardwares

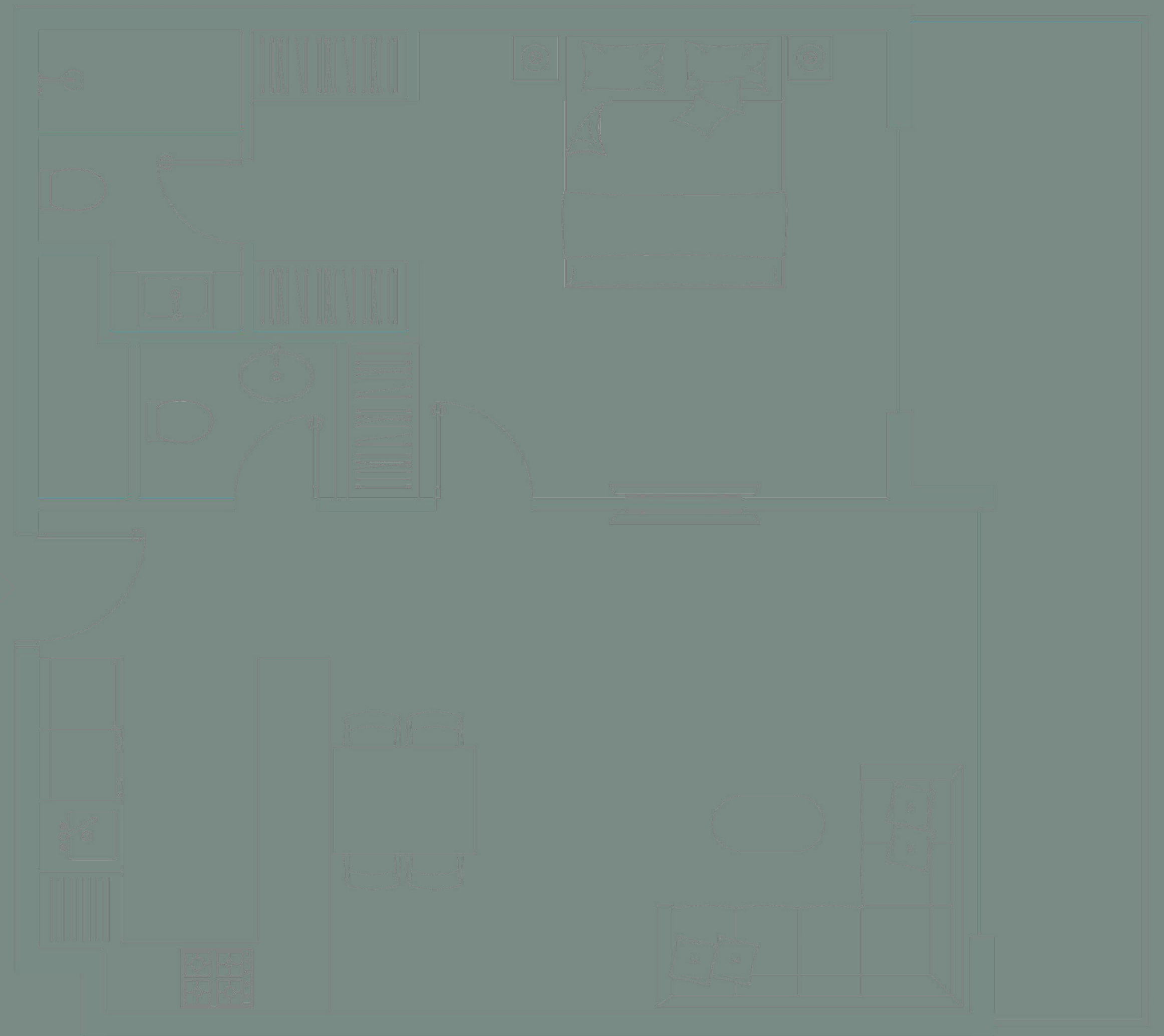
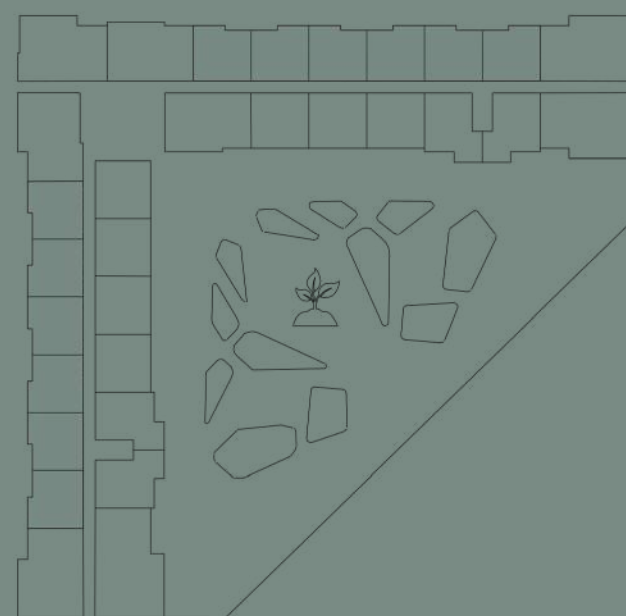
Custom designed contemporary kitchen cabinetry, in a white colour

Quartz worktop, glass backsplash, undermount sink with mixer

Custom designed contemporary built in wardrobes

Built in appliances: Siemens (or equivalent) refrigerator, dishwasher, washing machine, gas oven, gas hob, extraction hood

Bathroom sanitaryware, faucets and accessories: Grohe, Geberit, Vitra (or equivalent)



# One bedroom apartment – Type C

## General

Approx. 3.1m clear ceiling height in principal rooms

High performance floor to ceiling double glazing window systems

Built in heat/smoke detectors and in-suite water sprinkler system Individual apartment water, electricity, cooling, gas metering

One car parking space included

Unit Size: from 797.49 to 806.75 sqft

## Finishes

Flooring: porcelain tiles, matte finish, timber effect

Custom designed fire resistant entry door with electronic smart lock

Laminated modern interior doors with magnetic door hardwares

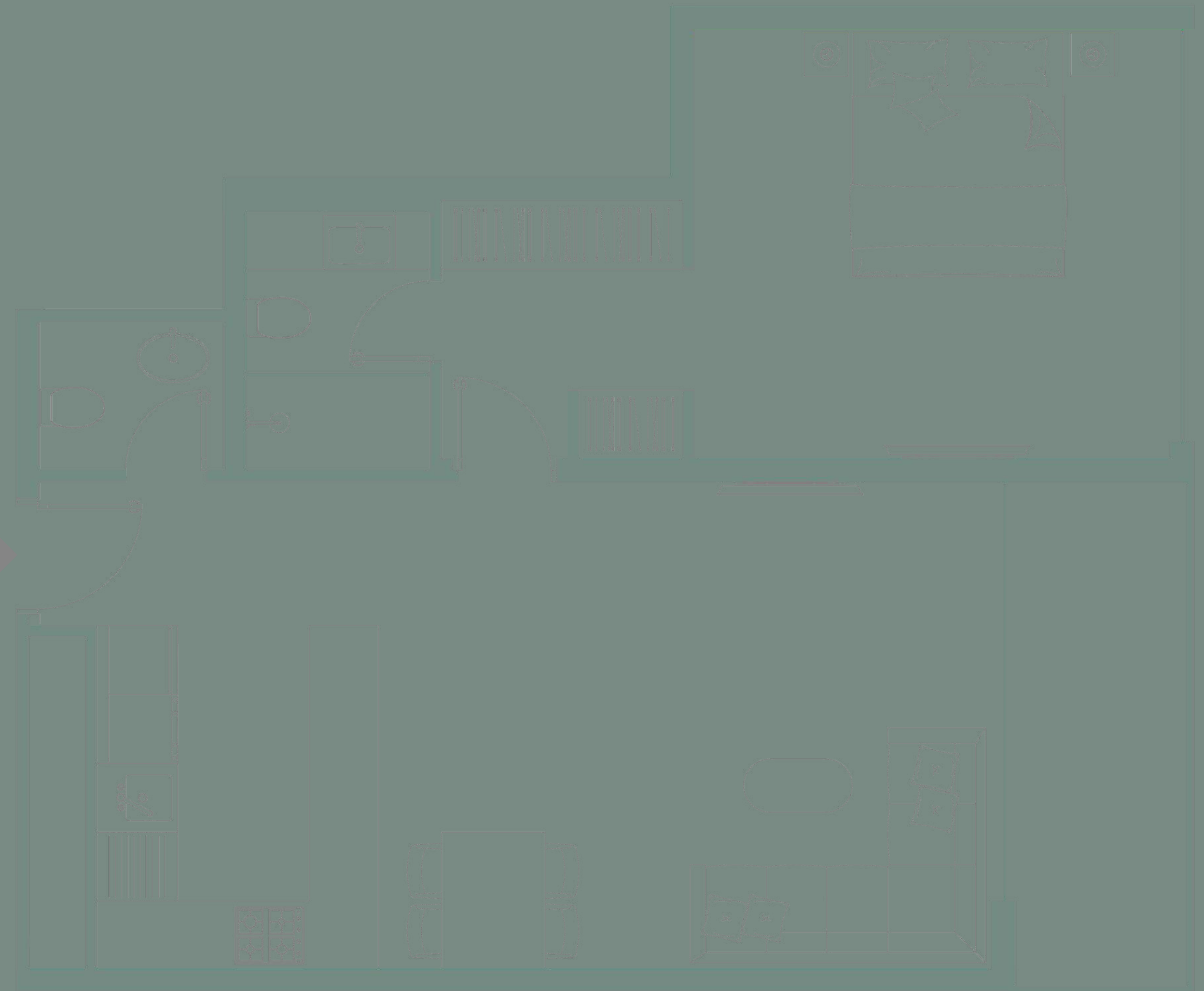
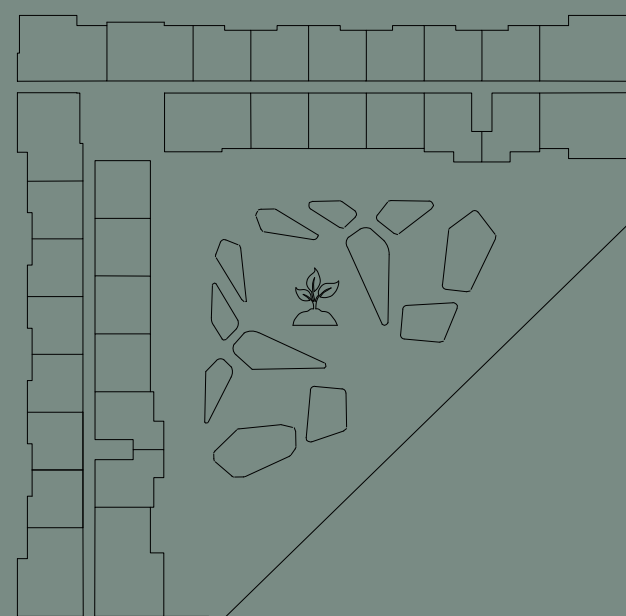
Custom designed contemporary kitchen cabinetry, in a white colour

Quartz worktop, glass backsplash, undermount sink with mixer

Custom designed contemporary built in wardrobes

Built in appliances: Siemens (or equivalent) refrigerator, dishwasher, washing machine, gas oven, gas hob, extraction hood

Bathroom sanitaryware, faucets and accessories: Grohe, Geberit, Vitra (or equivalent)



# Two bedrooms apartment – Type D

## General

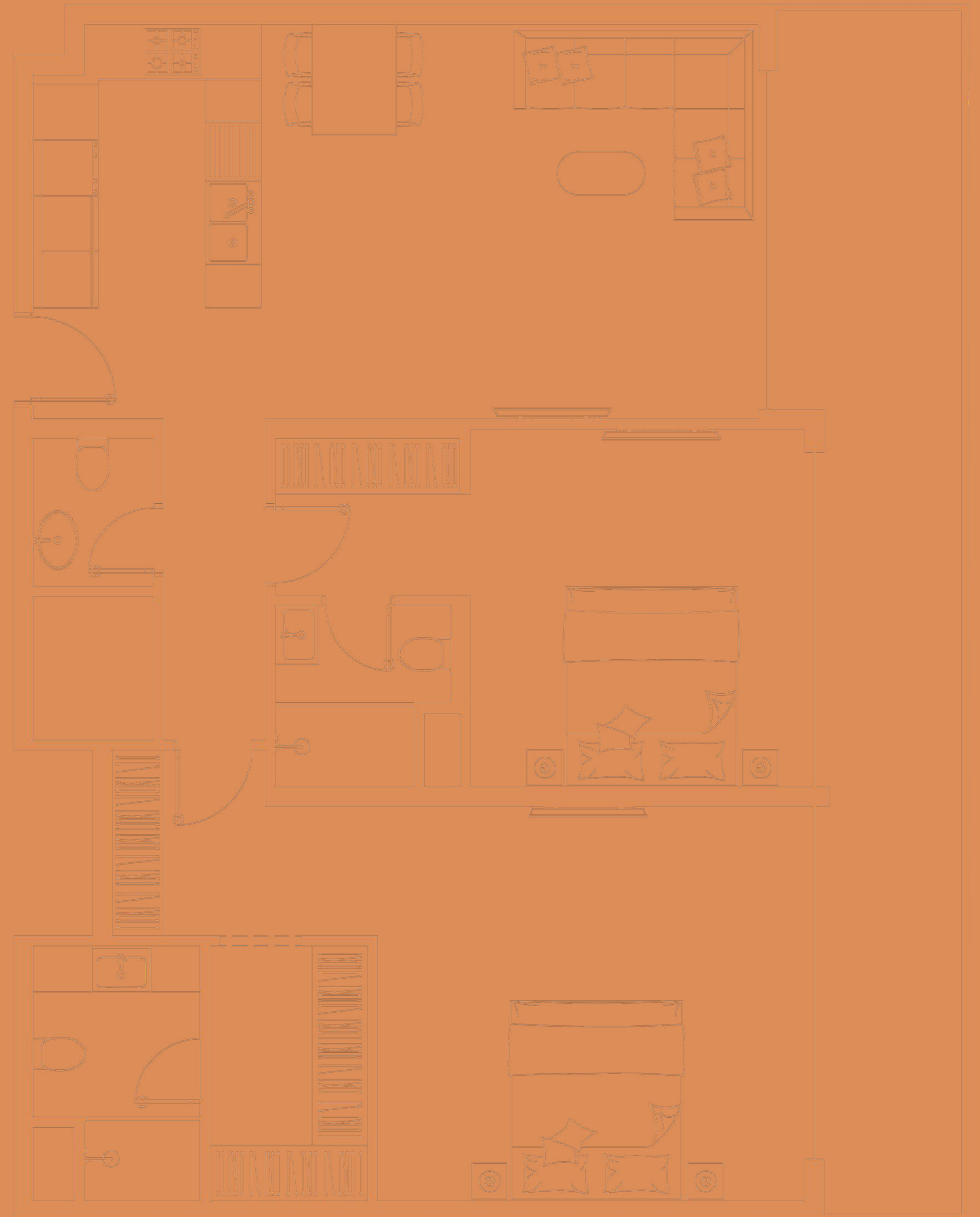
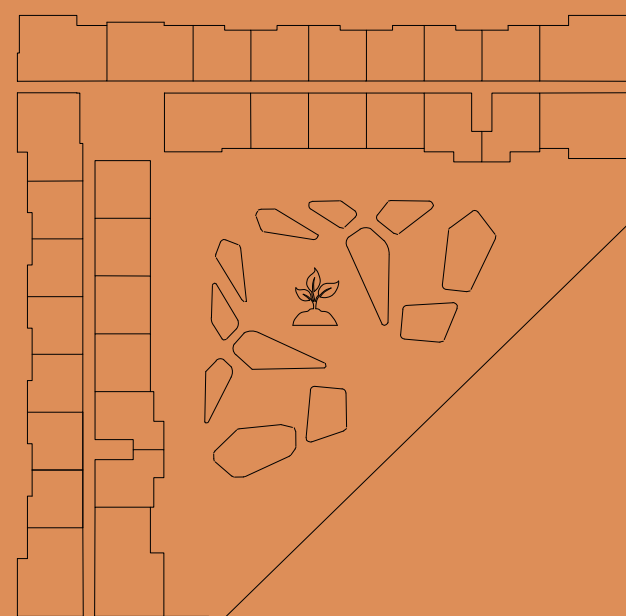
- Approx. 3.1m clear ceiling height in principal rooms
- High performance floor to ceiling double glazing window
- systems
- Built in heat/smoke detectors and in-suite water sprinkler
- system Individual apartment water, electricity, cooling, gas
- metering

Two car parking spaces included

Unit Size: 1234.08 - 1360.34 sqft

## Finishes

- Flooring: porcelain tiles, matte finish, timber effect
- Custom designed fire resistant entry door with electronic smart lock
- Laminated modern interior doors with magnetic door hardwares
- Custom designed contemporary kitchen cabinetry, in a white colour
- Quartz worktop, glass backsplash, undermount sink with mixer
- Custom designed contemporary built in wardrobes
- Built in appliances: Siemens (or equivalent) two refrigerators, dishwasher, washing machine, gas oven, gas hob, extraction hood
- Bathroom sanitaryware, faucets and accessories: Grohe, Geberit, Vitra (or equivalent)



# Two bedrooms + maids room apartment – Type E

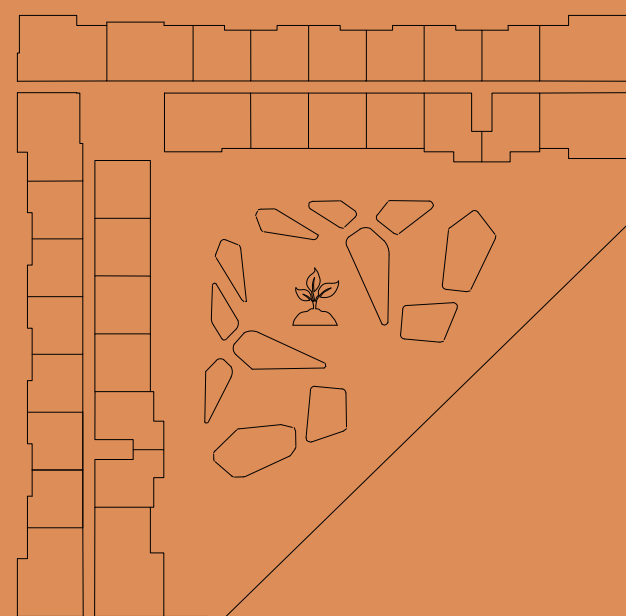
## General

- Approx. 3.1m clear ceiling height in principal rooms
- Maid Room
- High performance floor to ceiling double glazing window
- systems
- Built in heat/smoke detectors and in-suite water sprinkler
- system Individual apartment water, electricity, cooling, gas
- metering

One Tandem car parking space included

Unit Size: 1242.69 sqft

- ### Finishes
- Flooring: porcelain tiles, matte finish, timber effect
  - Custom designed fire resistant entry door with electronic smart lock
  - Laminated modern interior doors with magnetic door hardwares
  - Custom designed contemporary kitchen cabinetry, in a white colour
  - Quartz worktop, glass backsplash, undermount sink with mixer
  - Custom designed contemporary built in wardrobes
  - Built in appliances: Siemens (or equivalent) two refrigerators, dishwasher, washing machine, gas oven, gas hob, extraction hood
  - Bathroom sanitaryware, faucets and accessories: Grohe, Geberit, Vitra (or equivalent)



# Three bedrooms apartment - Type F

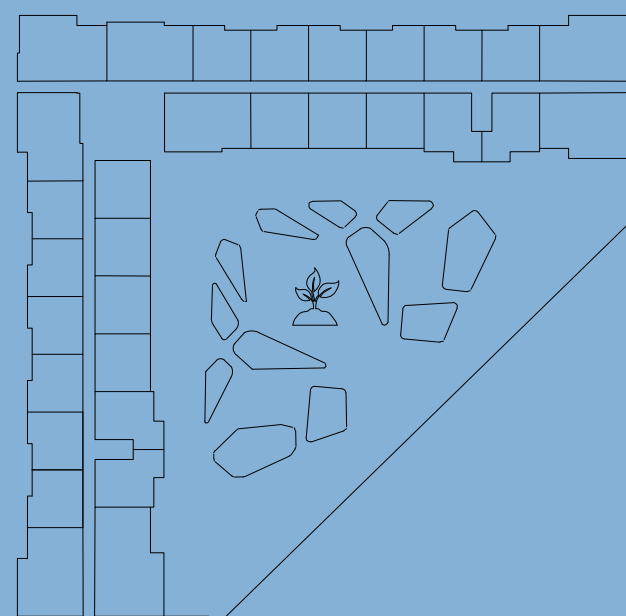
## General

- Approx. 3.1m clear ceiling height in principal rooms
- High performance floor to ceiling double glazing window systems
- Built in heat/smoke detectors and in-suite water sprinkler system
- Individual apartment water, electricity, cooling, gas metering

Two car parking spaces included

Unit Size: 1298.23 - 1344.73 sqft

- ### Finishes
- Flooring: porcelain tiles, matte finish, timber effect
  - Custom designed fire resistant entry door with electronic smart lock
  - Laminated modern interior doors with magnetic door hardwares
  - Custom designed contemporary kitchen cabinetry, in a white colour
  - Quartz worktop, glass backsplash, undermount sink with mixer
  - Custom designed contemporary built in wardrobes
  - Built in appliances: Siemens (or equivalent) two refrigerators, dishwasher, washing machine, gas oven, gas hob, extraction hood
  - Bathroom sanitaryware, faucets and accessories: Grohe, Geberit, Vitra (or equivalent)





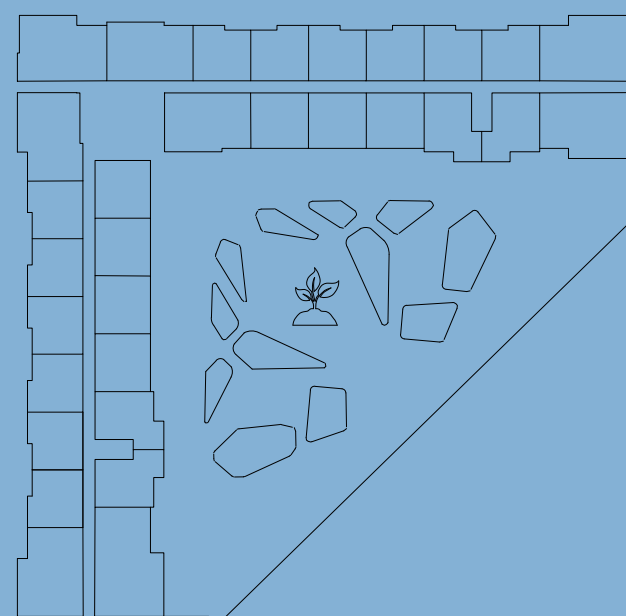
# Three bedrooms + maids room apartment - Type G

## General

- Approx. 3.1m clear ceiling height in principal rooms
  - Maid Room
  - High performance floor to ceiling double glazing window systems
  - Built in heat/smoke detectors and in-suite water sprinkler system
  - Individual apartment water, electricity, cooling, gas metering
  - Two car parking spaces included
- Unit Size: 1700.05 -1711.35 sqft

## Finishes

- Flooring: porcelain tiles, matte finish, timber effect
- Custom designed fire resistant entry door with electronic smart lock
- Laminated modern interior doors with magnetic door hardwares
- Custom designed contemporary kitchen cabinetry, in a white colour
- Quartz worktop, glass backsplash, undermount sink with mixer
- Custom designed contemporary built in wardrobes
- Built in appliances: Siemens (or equivalent) two refrigerators, dishwasher, washing machine, gas oven, gas hob, extraction hood
- Bathroom sanitaryware, faucets and accessories: Grohe, Geberit, Vitra (or equivalent)





# TOTALLY HOME

REAL ESTATE



[totallyhomerealestate](#)



[totallyhomerealestate](#)



[totallyhomerealestate](#)



[totallyhomerealestate.com](#)

 +971 54 289 7686

 [sales@totallyhomerealestate.com](mailto:sales@totallyhomerealestate.com)

 [support@totallyhomerealestate.com](mailto:support@totallyhomerealestate.com)

 [admin@totallyhomerealestate.com](mailto:admin@totallyhomerealestate.com)

 Office 103, Building 6 Bay Square Tower, Business Bay PO Box 418317, Dubai