

Lu ma 22





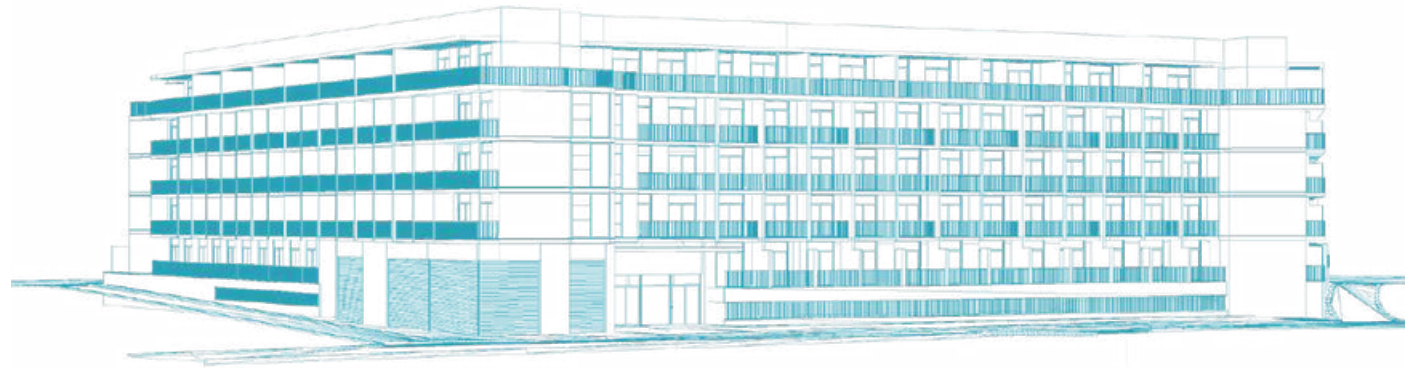
# welcome home

Centrally located in one of Dubai's most up-and-coming areas, Luma22 is an unparalleled building development.

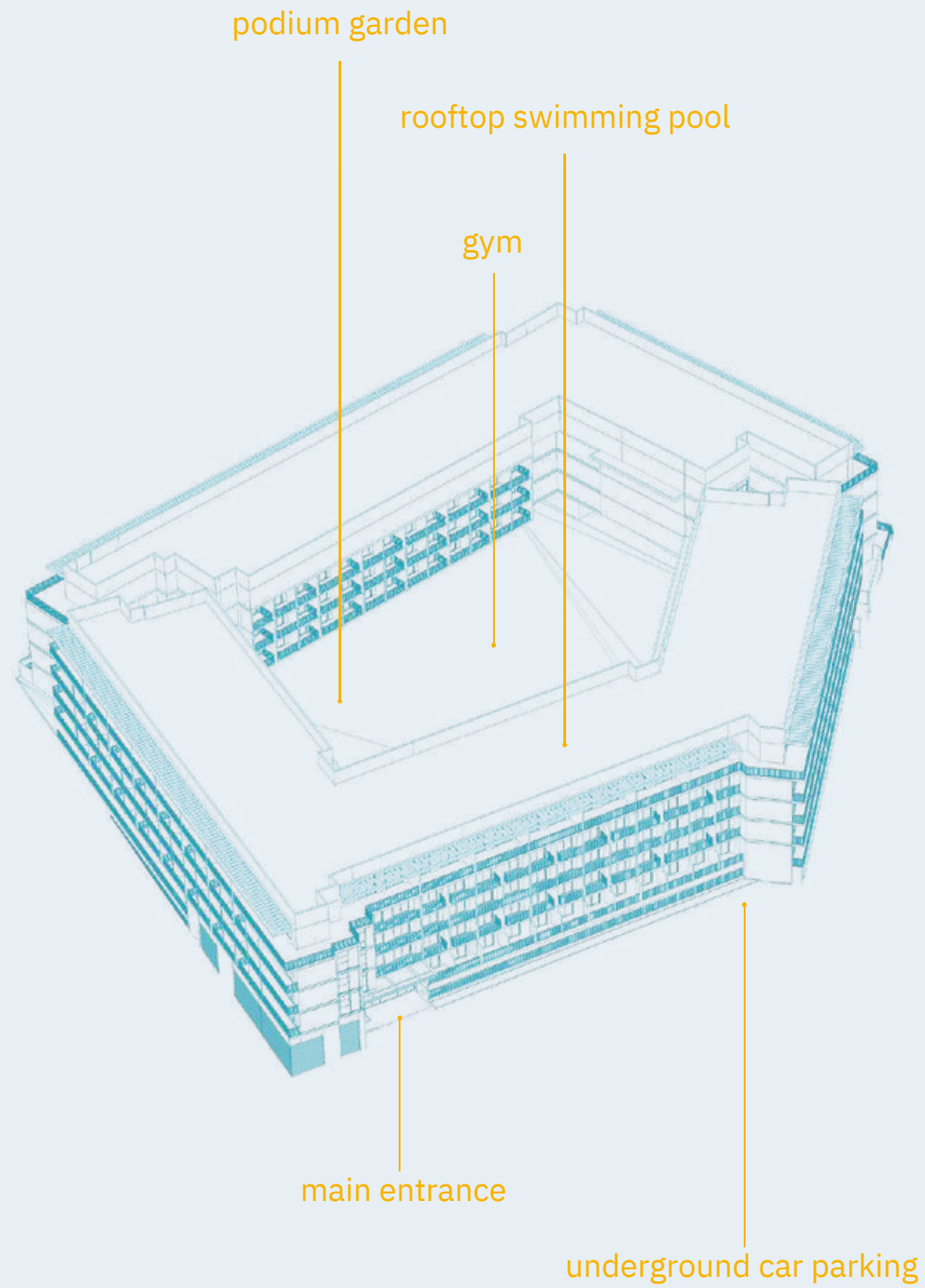
These ace apartments offer various sizes plus convenience, beauty and state-of-the-art amenities.

The renderings in this brochure are for marketing purposes; construction may vary.

a well-balanced  
housing development

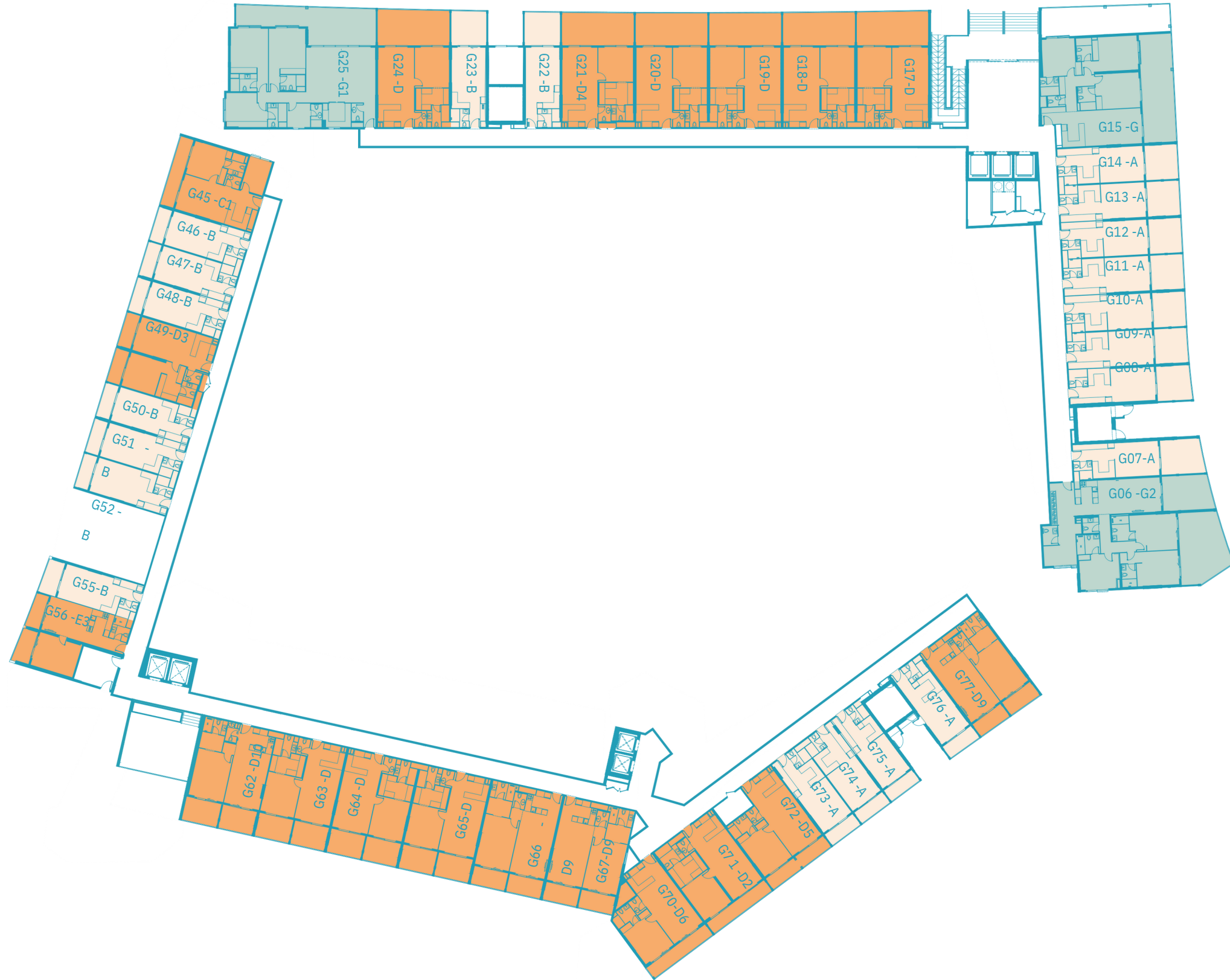





FLOOR PLAN



Studio Apartment	TYPE A
	TYPE B
One Bedroom Apartment	TYPE C
	TYPE D
	TYPE E
Two Bedroom Apartment	TYPE F
	TYPE H
Three Bedroom Apartment	TYPE G

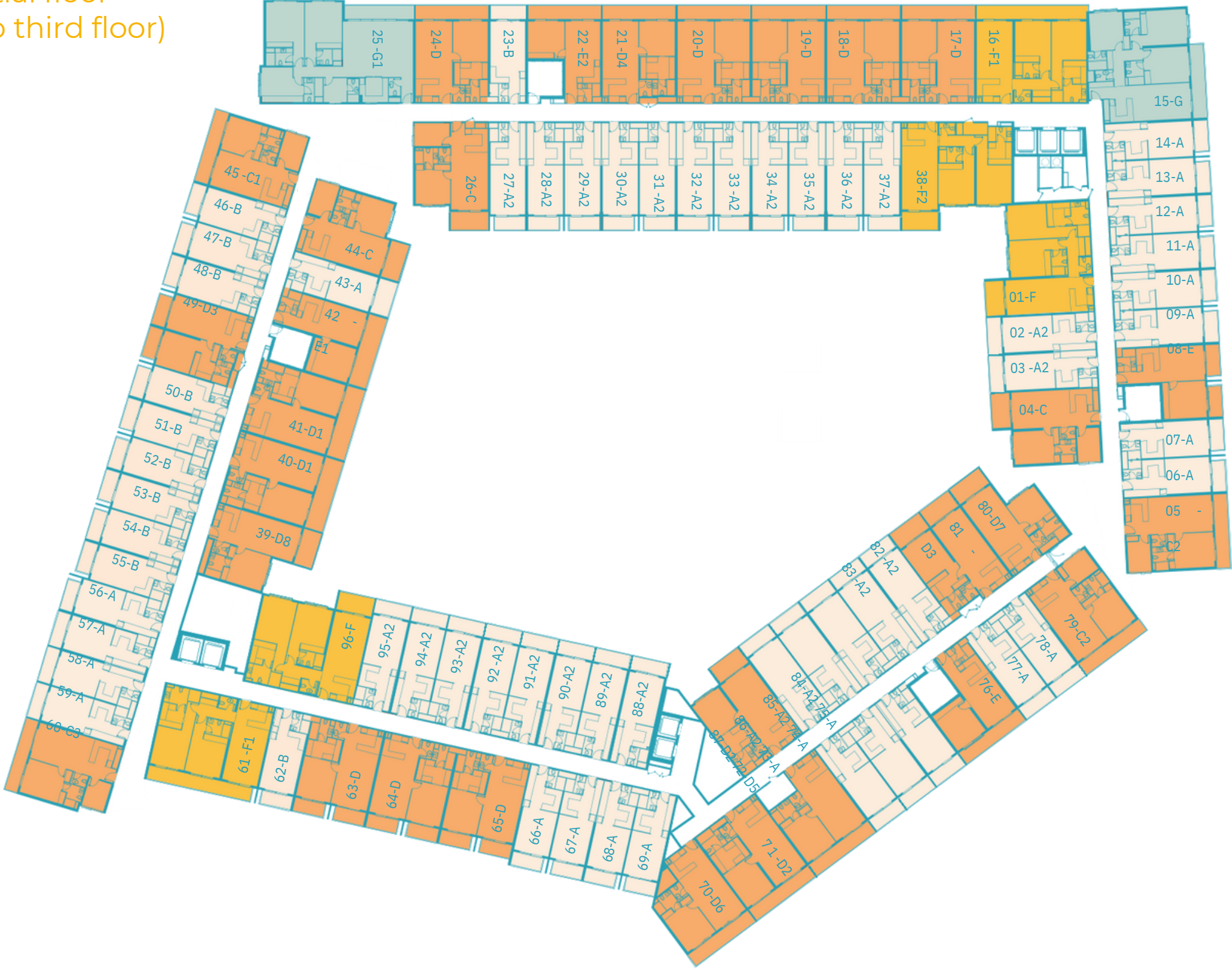
ground floor



	STUDIO APARTMENT
	ONE BEDROOM APARTMENT
	THREE BEDROOM APARTMENT

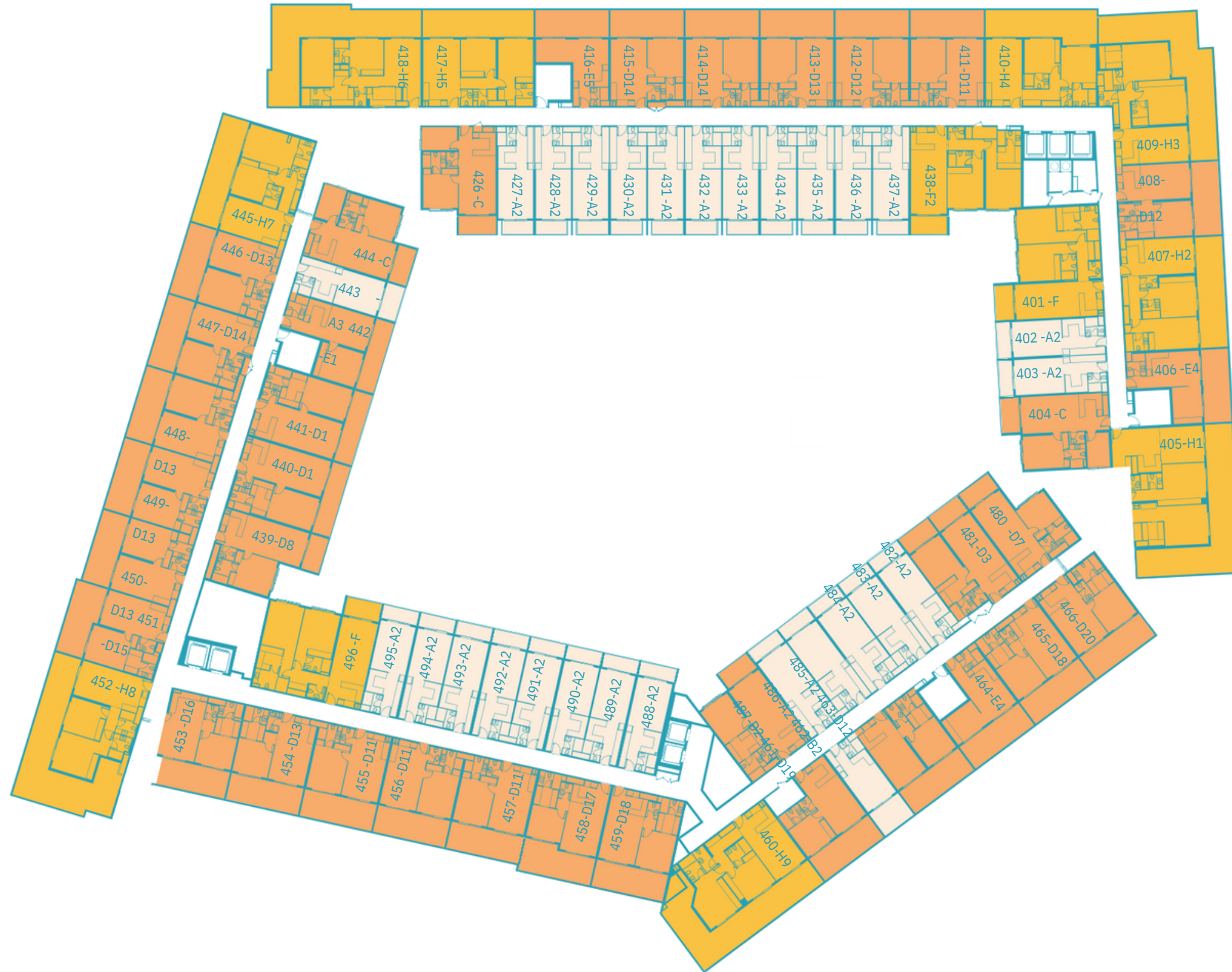



typical residential floor  
(second floor to third floor)



	STUDIO APARTMENT
	ONE BEDROOM APARTMENT
	TWO BEDROOM APARTMENT
	THREE BEDROOM APARTMENT

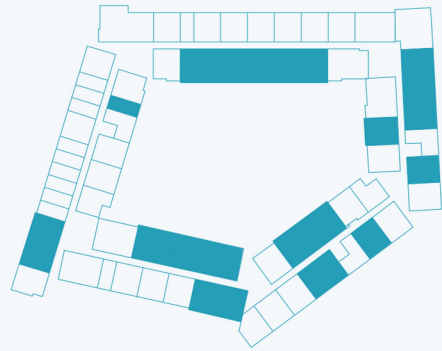
fourth floor



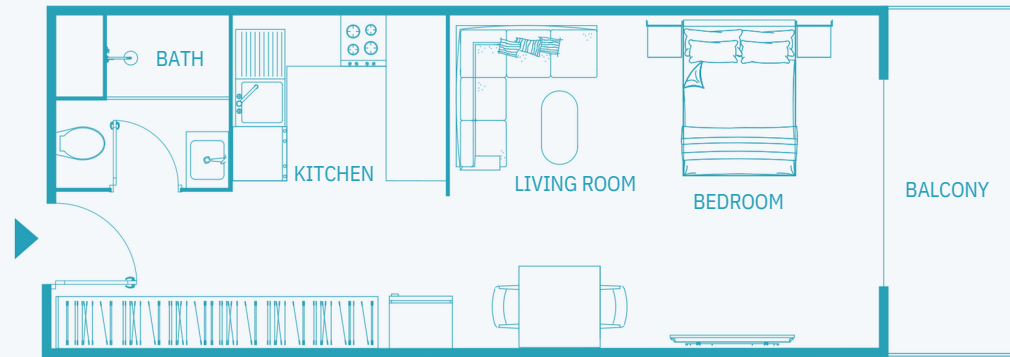
	STUDIO APARTMENT
	ONE BEDROOM APARTMENT
	TWO BEDROOM APARTMENT



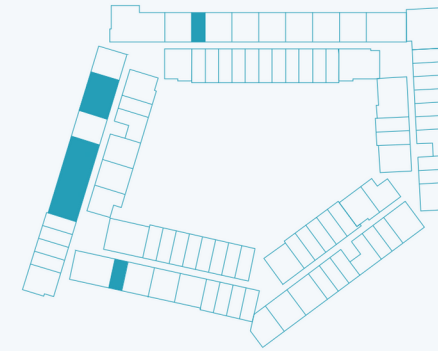
# Studio Apartment TYPE A



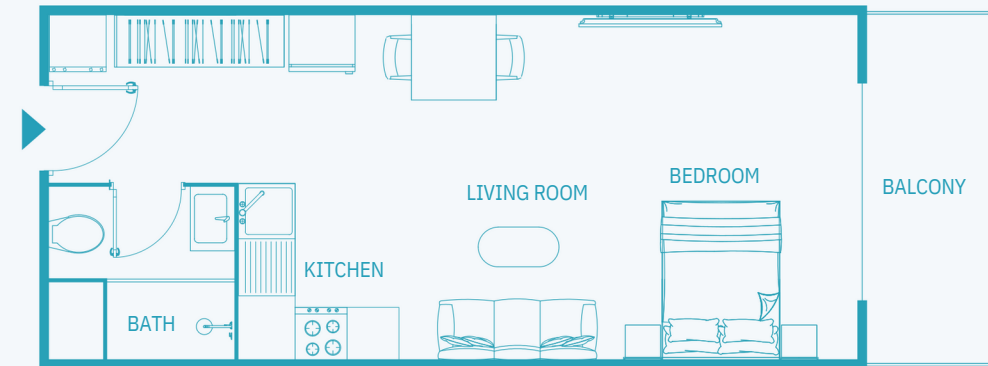
UNIT SIZE: from 436 to 577 SQFT



# Studio Apartment TYPE B

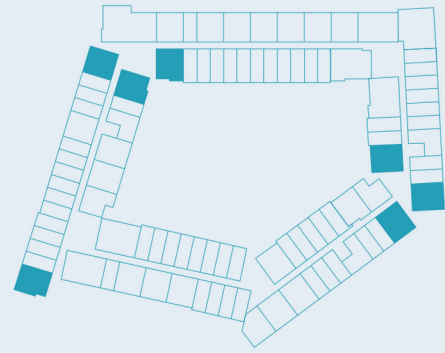


UNIT SIZE: from 414 to 713 SQFT



# One Bedroom Apartment

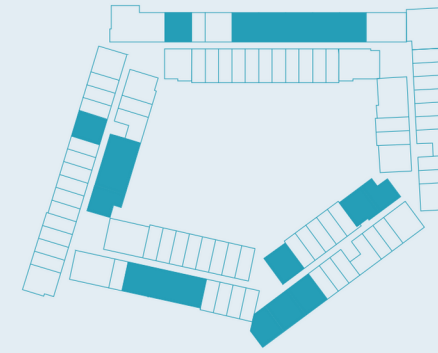
## TYPE C



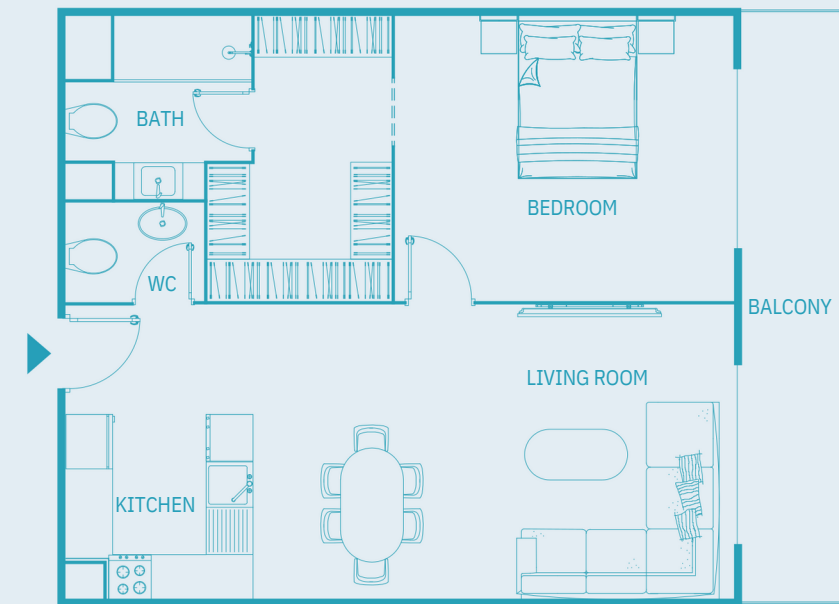
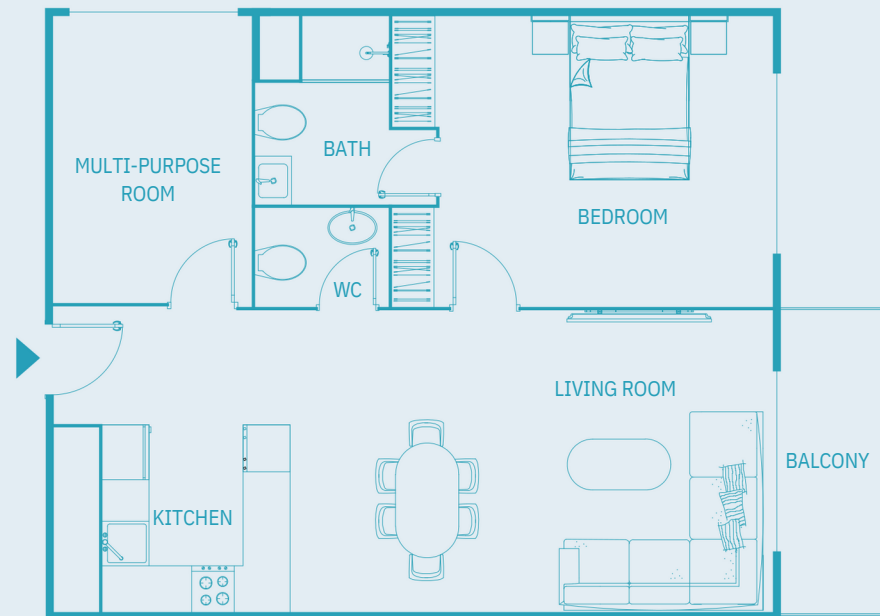
UNIT SIZE: from 827 to 926 SQFT

# One Bedroom Apartment

## TYPE D

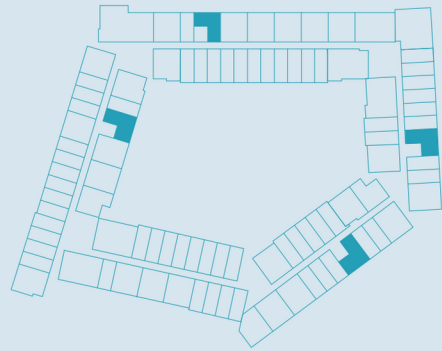


UNIT SIZE: from 727 to 1102 SQFT

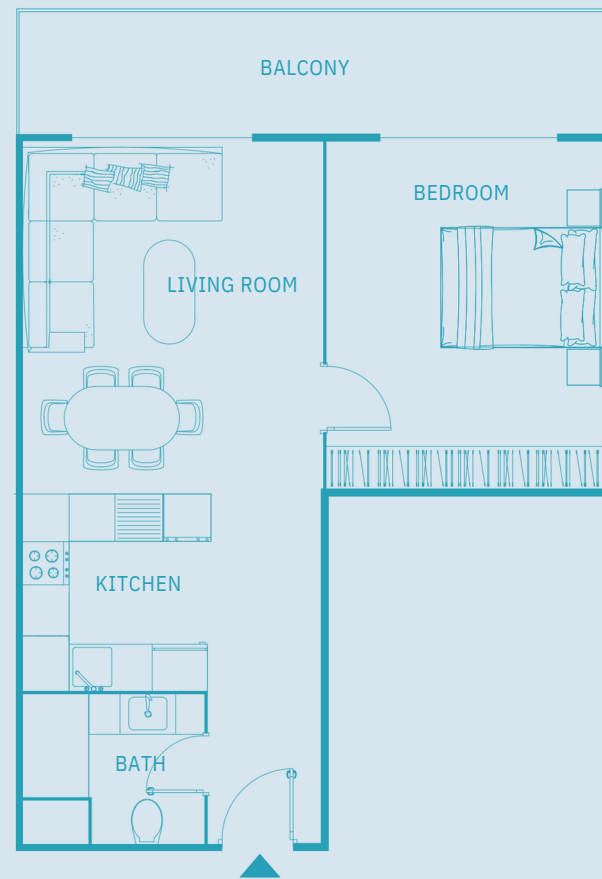


# One Bedroom Apartment

## TYPE E

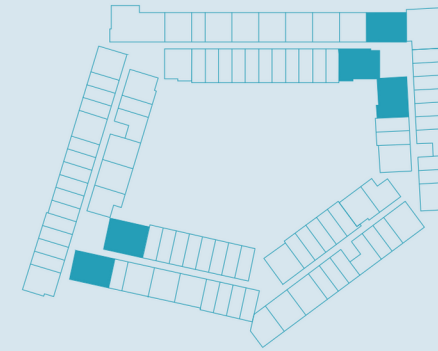


UNIT SIZE: from 662 to 920 SQFT



# Two Bedroom Apartment

## TYPE F

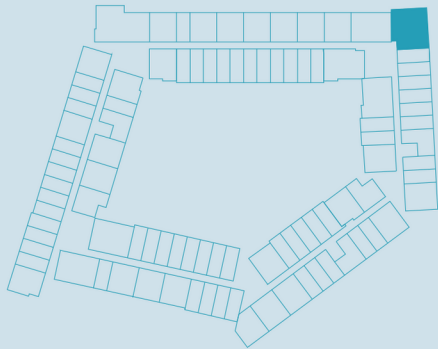


UNIT SIZE: from 1138 to 1309 SQFT



# Three Bedroom Apartment

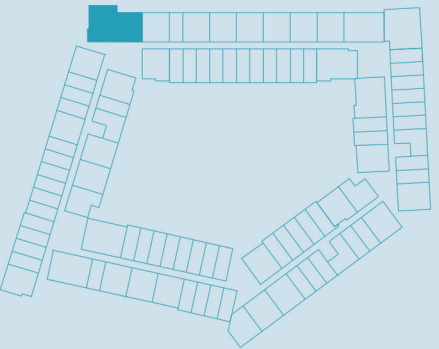
## TYPE G



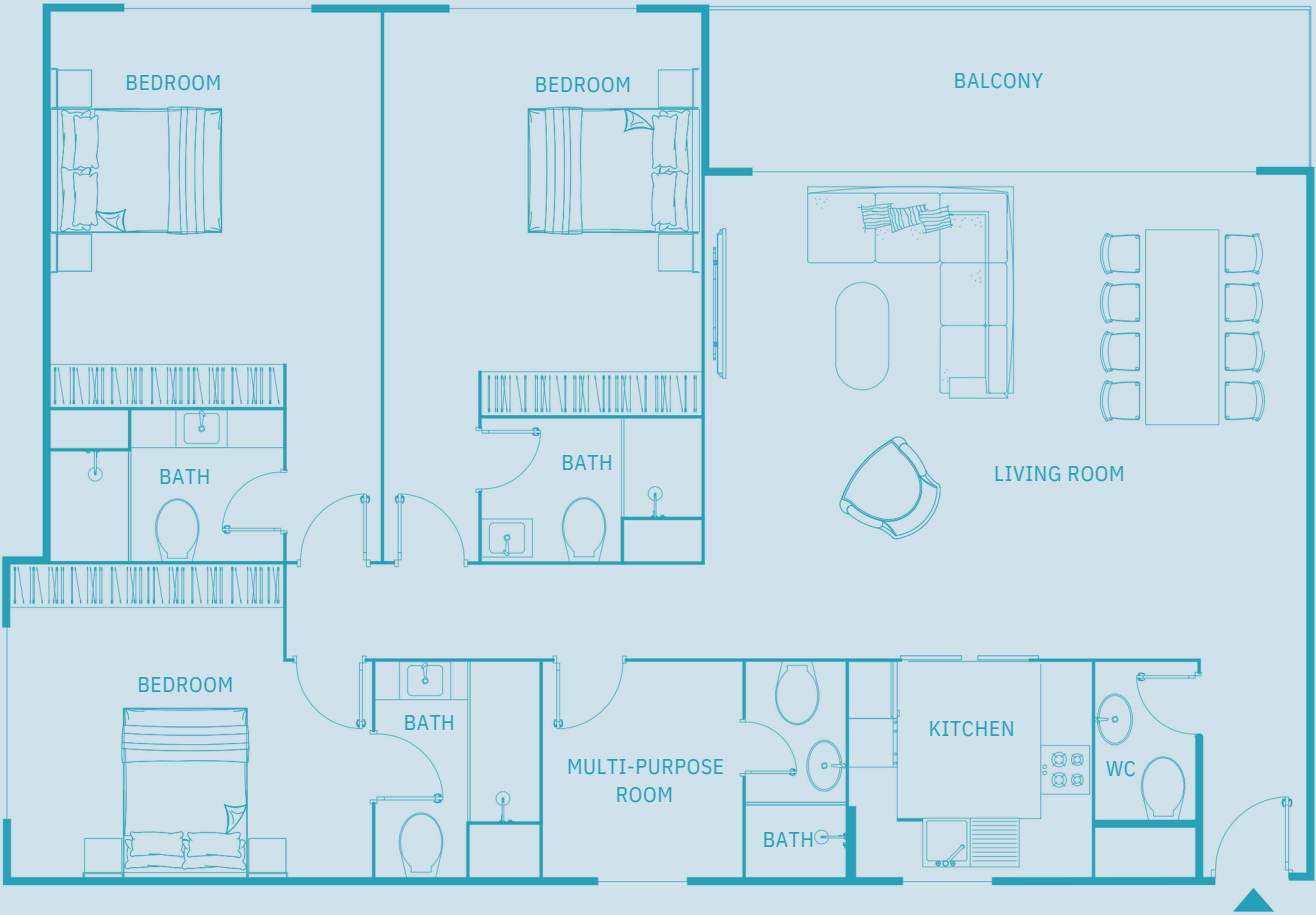
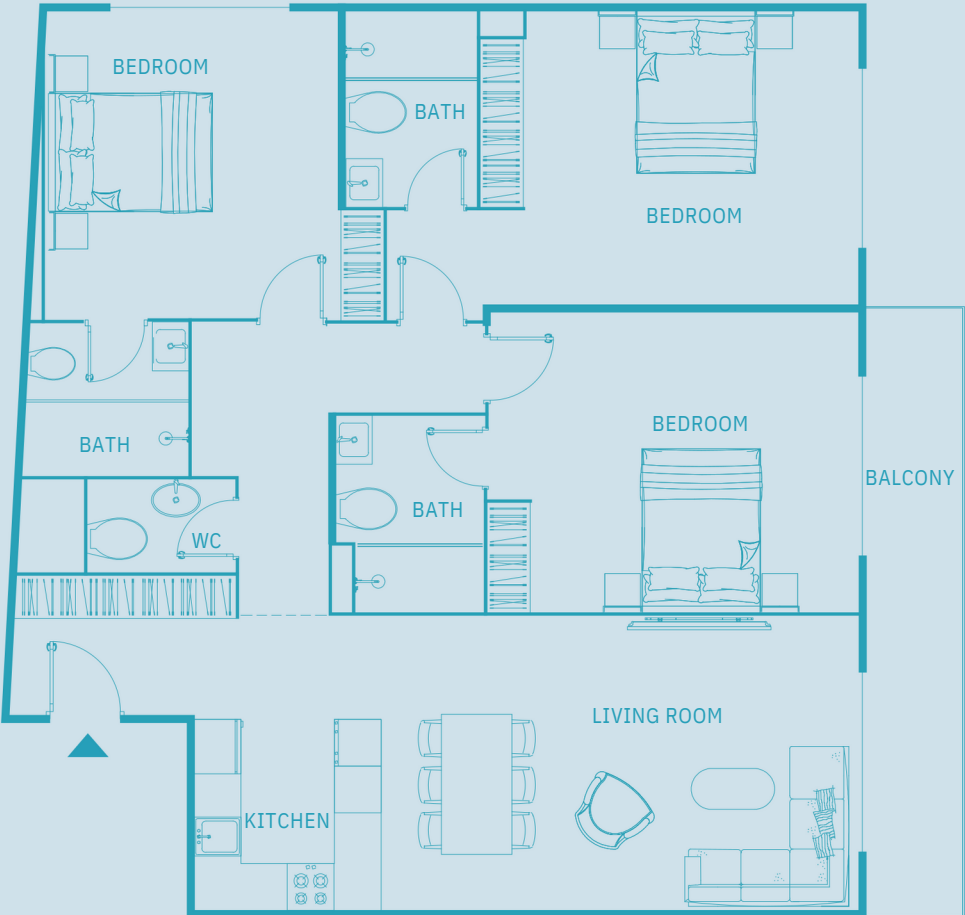
UNIT SIZE: from 1399 to 1715 SQFT

# Three Bedroom Apartment

## TYPE G1



UNIT SIZE: from 1756 to 2145 SQFT





# TOTALLY HOME

REAL ESTATE



[totallyhomerealestate](#)



[totallyhomerealestate](#)



[totallyhomerealestate](#)



[totallyhomerealestate.com](#)

 +971 54 289 7686  [sales@totallyhomerealestate.com](mailto:sales@totallyhomerealestate.com)

 [support@totallyhomerealestate.com](mailto:support@totallyhomerealestate.com)  [admin@totallyhomerealestate.com](mailto:admin@totallyhomerealestate.com)

 Office 103, Building 6 Bay Square Tower, Business Bay PO Box 418317, Dubai